

**HL-IP20-Color-5m**

#### FEATURES

- 12 or 24 VDC input available
- Multiple density options
- LED lifetime of 50,000 hours (L70)
- 10 mm strip width
- 3M adhesive backing
- Operating temperature of -4°-113° F (-20°-45° C)
- IP20 environmental rating

#### APPLICATIONS

Some common applications include sign lighting, bias lighting, cove lighting, task lighting, backlighting, accent lighting, and under cabinet lighting.

#### ACCESSORIES

Power Supplies



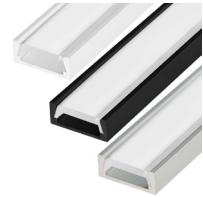
Strip Connectors



Controllers and Switches



Mounting Hardware and Housings



#### AVAILABLE VERSIONS

##### 18 LEDs/ft (60 LEDs/m)

- STN-BBLU-C3A-10B5M-12V
- STN-BBLU-C6A-10B5M-24V
- STN-BGRE-C3A-10B5M-12V
- STN-BGRE-C6A-10B5M-24V
- STN-BRED-C3A-10B5M-12V
- STN-BRED-C6A-10B5M-24V

##### 36 LEDs/ft (120 LEDs/m)

- STN-BBLU-C3A-10C5M-12V
- STN-BBLU-C6A-10C5M-24V
- STN-BGRE-C3A-10C5M-12V
- STN-BGRE-C6A-10C5M-24V
- STN-BRED-C3A-10C5M-12V
- STN-BRED-C6A-10C5M-24V

#### SAMPLE PART NUMBER BREAKDOWN

## STN-BRED-C6A-10C5M-24V

FAMILY / CATEGORY / COLOR			LED TYPE / SEGMENT		IP RATING	SIZE / DENSITY / VOLTAGE			
<b>STN</b> Strip Type	<b>B</b> Strip Type	<b>RED</b> Color	<b>C</b> LED Type	<b>6</b> LED/Segment	<b>A</b> IP Rating	<b>10</b> Strip Width	<b>C</b> Density	<b>5M</b> Length	<b>24V</b> Voltage
STN: Non-weatherproof	B: Single Color	BLU: Blue GRN: Green RED: Red	C: 2835	3: 3 LED/seg 6: 6 LED/seg	A: IP20	10: 10 mm	B: 60 LEDs/m C: 120 LEDs/m	5M: 16.4 ft (5 m)	12V: 12 V 24V: 24 V

#### SPECIFICATIONS

Model	STN-Bx-C3A-10B5M-12V	STN-Bx-C6A-10B5M-24V	STN-Bx-C3A-10C5M-12V	STN-Bx-C6A-10C5M-24V
Power Consumption	59 W (total for 5 m)		69 W (total for 5 m)	
Current Draw	300 mA /ft	150 mA /ft	350 mA/ft	175 mA /ft
Brightness	310 lm/ft		395 lm/ft	
Efficacy	86 lm/W		94 lm/W	
Beam Angle	120°			
Max Run	24.6 ft (7.5 m)	24.6 ft (7.5 m)	16.4 ft (5 m)	21.3 ft (6.5 m)



T 866.811.5550

F 314.972.6202

email: commercial-sales@superbrightleds.com

www.superbrightleds.com/cat/industrial-led-lighting/



Specifications are subject to change without notice.

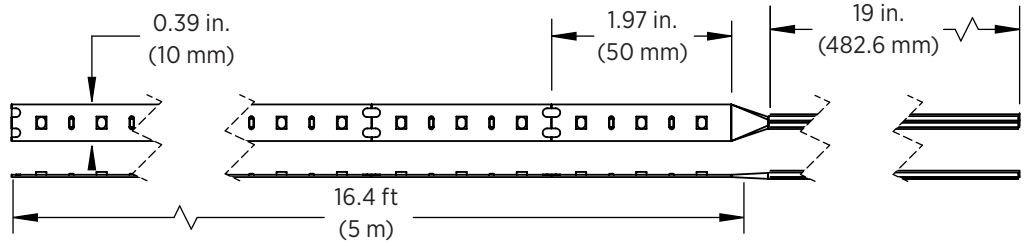
# HighLight LED Strip Lights

## 2835 Strip Specifications

### DIMENSIONAL DRAWINGS

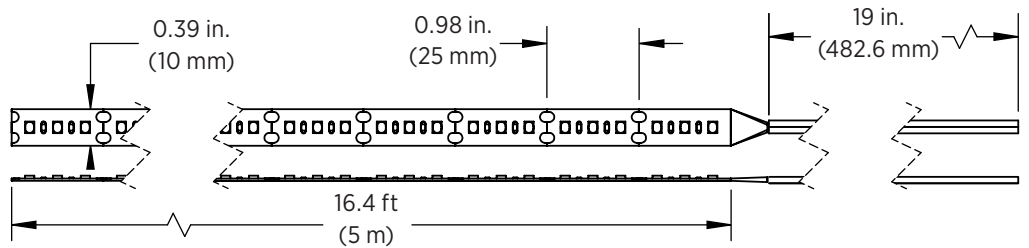
**STN-x-C3A-10B5M-12V**

- 24.6 ft (7.5 m) max run



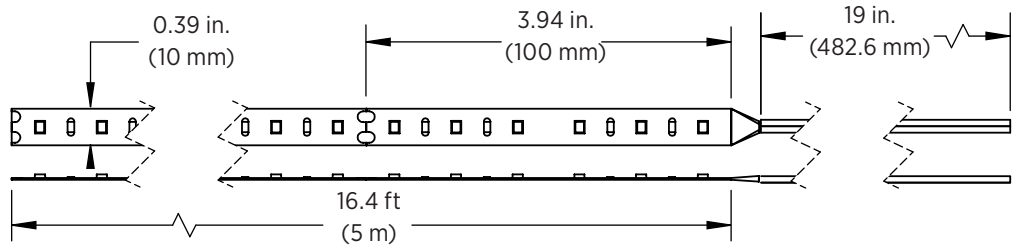
**STN-x-C3A-10C5M-12V**

- 16.4 ft (5 m) max run



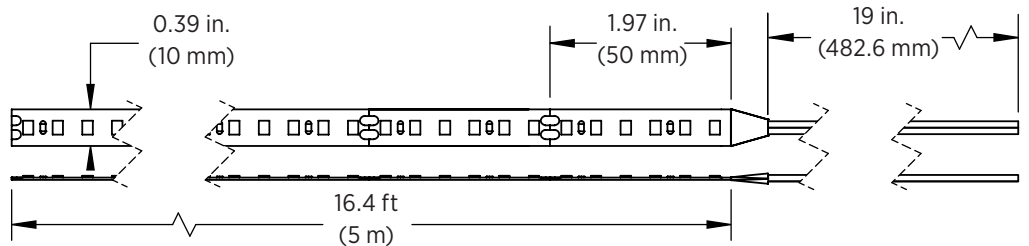
**STN-x-C6A-10B5M-24V**

- 24.6 ft (7.5 m) max run



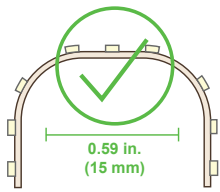
**STN-x-C6A-10C5M-24V**

- 21.3 ft (6.5 m) max run



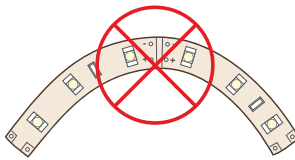
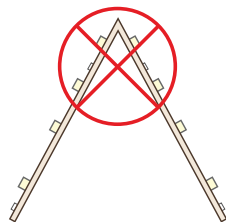
Note: The strip height for all strips shown is 0.06 in. (1.5 mm).

### STRIP FLEXIBILITY



Bends less than 15mm will damage circuit traces and void warranty.

Bending strips at sharp angles will damage circuit traces and void warranty.



Bending strips on horizontal plane will damage circuit traces and void warranty.



Specifications are subject to change without notice.

T 866.811.5550

F 314.972.6202

email: commercial-sales@superbrightleds.com

www.superbrightleds.com/cat/industrial-led-lighting/

