

Light efficiency:

119 Lumen/Watt

Light quality:

CRI: 76.8

Color temperature:

3808 K

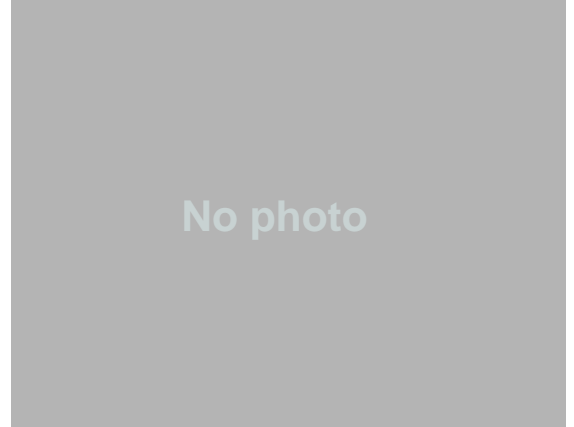
Output: 3181 lm

Peak: 510 cd

Power: 26.8 W

PF: 0.99

8 PLANES



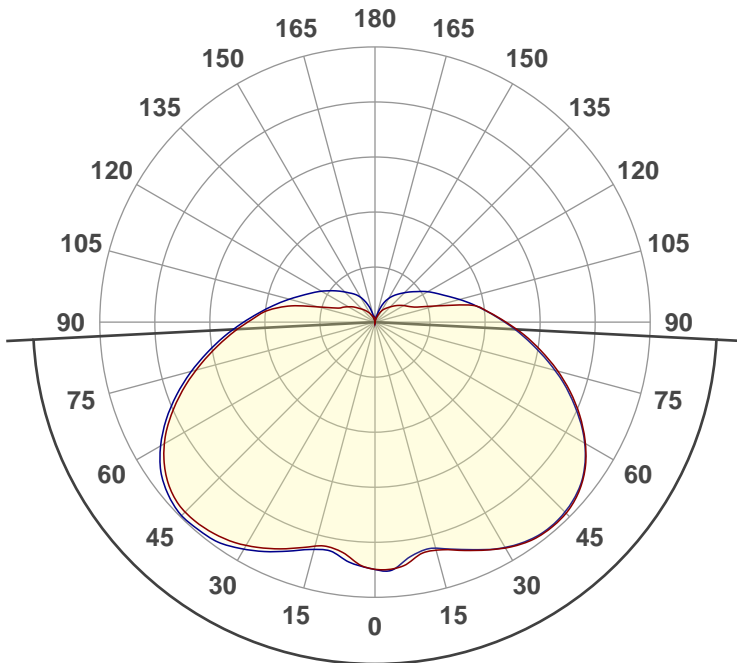
Tracking number: VT231031-005494

Part Number:

VTCJ-SW3B26 26W

Date and time:

10/31/2023 10:08:59 AM



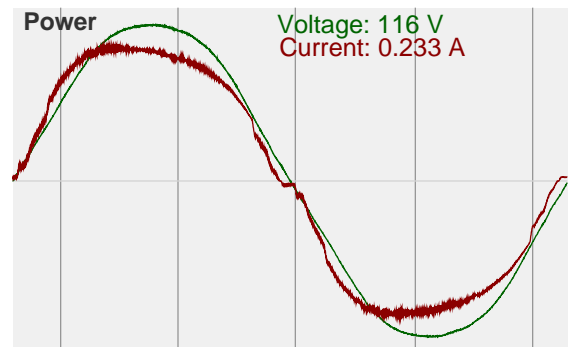
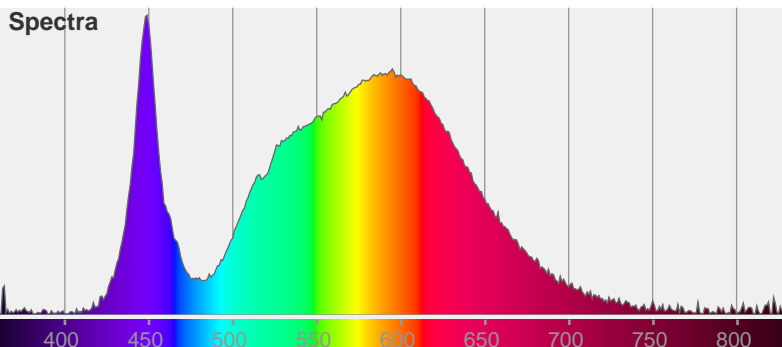
Beam angle

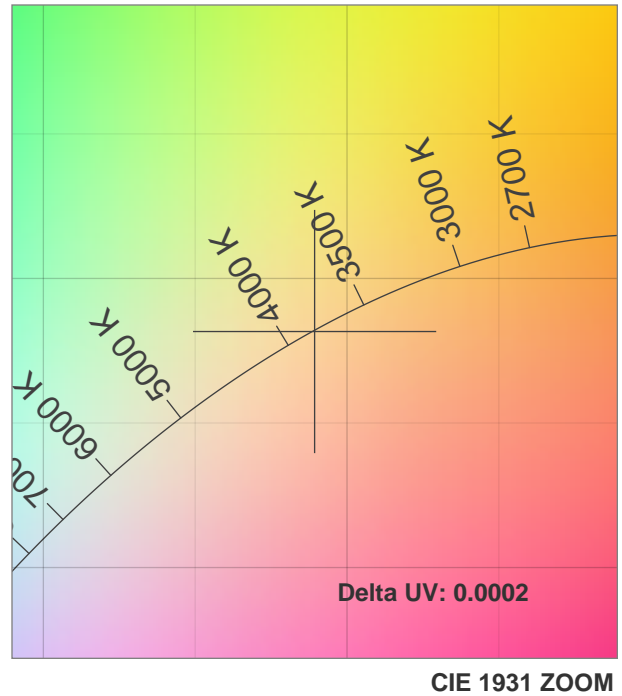
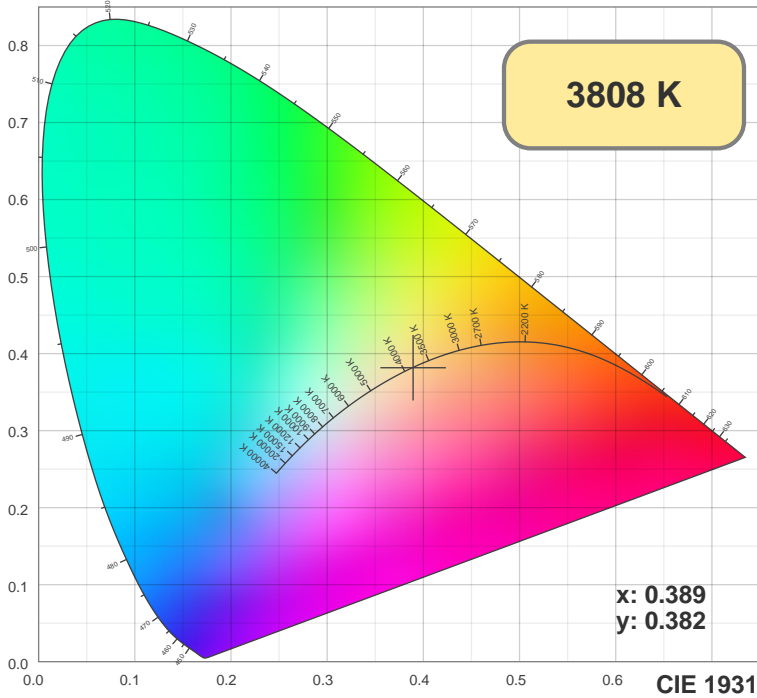
174.1°

Color



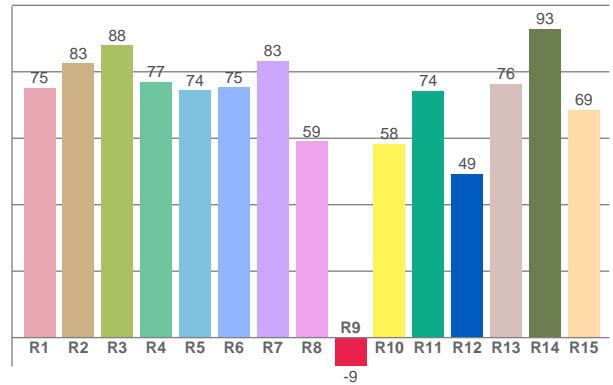
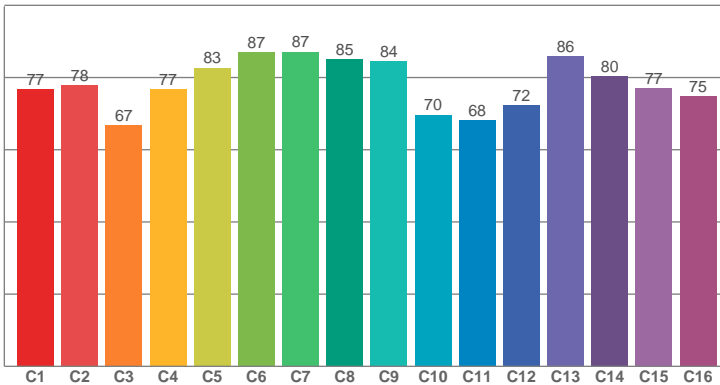
CIE1931  
x: 0.389  
y: 0.382





TM30: 77.9

CRI: 76.8 (R1-R8)



CRI R values, only R1-R8 are used to calculate final CRI value

R1	R2	R3	R4	R5	R6	R7	R8	R9	R10	R11	R12	R13	R14	R15
75.19	82.59	87.97	76.97	74.36	75.35	83.27	59.07	-8.64	58.28	74.31	49.27	76.41	92.98	68.52

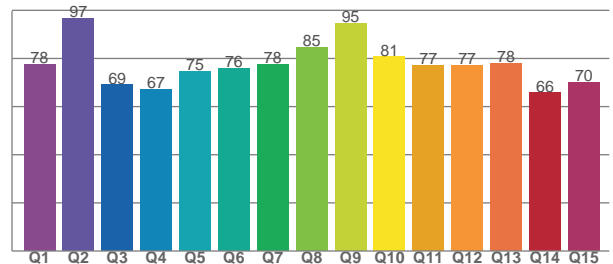
TM30 C values, 16 binned values out of total of 99 C values

C1	C2	C3	C4	C5	C6	C7	C8	C9	C10	C11	C12	C13	C14	C15	C16
76.71	77.86	66.74	76.77	82.67	86.90	87.06	84.96	84.48	69.68	68.15	72.22	85.80	80.29	77.07	74.76

CQS Q values

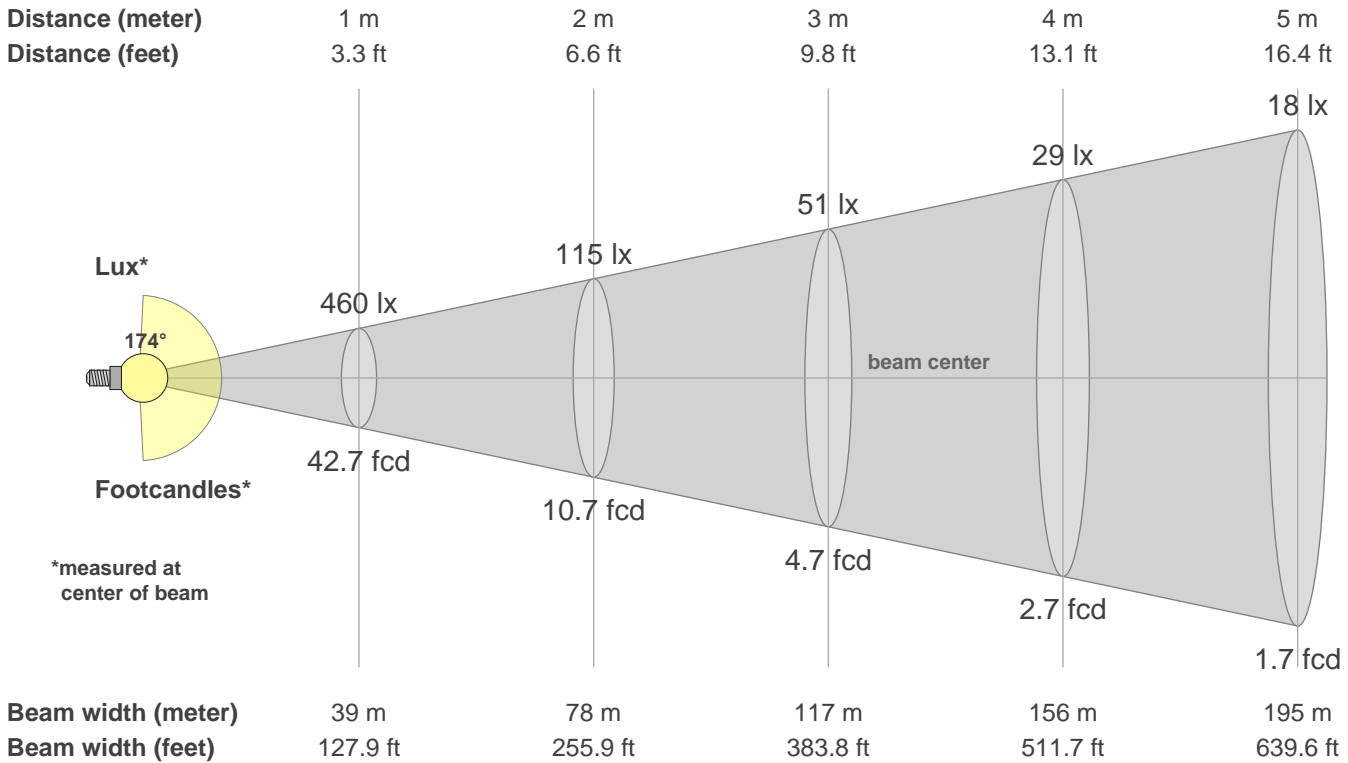
Q1	Q2	Q3	Q4	Q5	Q6	Q7	Q8	Q9	Q10	Q11	Q12	Q13	Q14	Q15
77.54	96.74	69.04	67.20	74.75	75.87	77.51	84.63	94.66	80.64	77.09	77.03	78.03	65.73	69.95

CQS: 76.2



## Color parameters

CCT	CRI	CRI R9	TM30 Rf	TM30 Rg	CQS	x	y	u	v	Duv
3808 K	76.8	-8.6	77.9	96.9	76.2	0.4	0.4	0.2	0.3	-0.0002



**Intensities in 0° c-plane**

0°	9°	18°	27°	36°	45°	54°	63°	72°	81°	90°	99°	108°	117°	126°	135°	144°	153°	162°	171°
460	449	447	476	501	504	481	435	375	309	244	189	95	66	53	40	30	20	8	3
100%	98%	97%	104%	109%	109%	105%	95%	82%	67%	53%	41%	21%	14%	12%	9%	7%	4%	2%	1%

**Intensities in 90° c-plane**

0°	9°	18°	27°	36°	45°	54°	63°	72°	81°	90°	99°	108°	117°	126°	135°	144°	153°	162°	171°
460	442	445	476	498	500	480	433	370	303	242	192	151	121	97	78	62	45	20	3
100%	96%	97%	103%	108%	109%	104%	94%	81%	66%	53%	42%	33%	26%	21%	17%	13%	10%	4%	1%

**Intensities in 180° c-plane**

0°	9°	18°	27°	36°	45°	54°	63°	72°	81°	90°	99°	108°	117°	126°	135°	144°	153°	162°	171°
460	433	442	472	493	500	481	435	369	300	238	177	90	62	48	34	24	16	7	3
100%	94%	96%	103%	107%	109%	105%	95%	80%	65%	52%	38%	20%	14%	10%	7%	5%	3%	2%	1%

**Intensities in 270° c-plane**

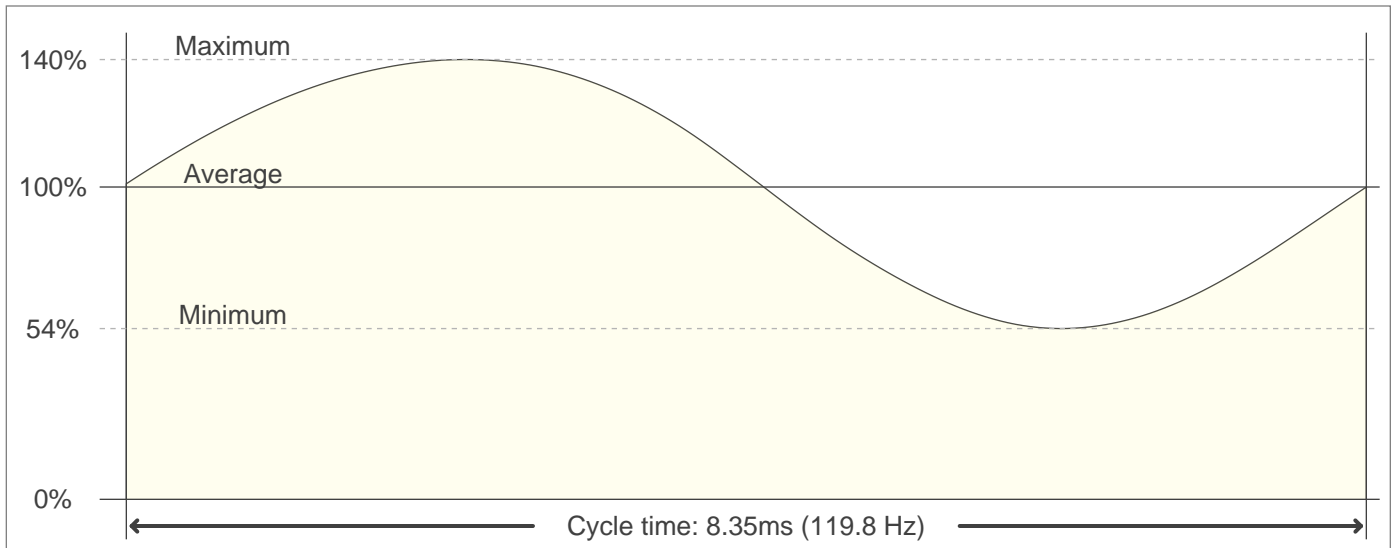
0°	9°	18°	27°	36°	45°	54°	63°	72°	81°	90°	99°	108°	117°	126°	135°	144°	153°	162°	171°
460	441	448	479	505	510	490	443	378	309	245	193	153	124	100	80	64	47	23	3
100%	96%	97%	104%	110%	111%	107%	96%	82%	67%	53%	42%	33%	27%	22%	17%	14%	10%	5%	1%

Beam angle 50%	Field angle 10%	Cutoff angle 2.5%	Intensity ratio in 120° cone	Intensity ratio in 90° cone
174.1°	280.5°	325.4°	46.4%	27.2%

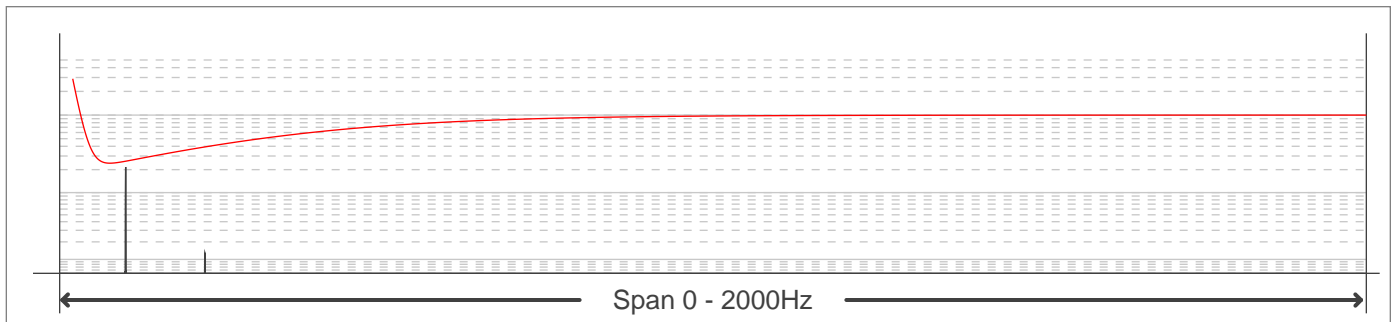
**Flicker curve (Complete sampled flicker signal)**



**Flicker frame (frame of one period)**



**Flicker FFT (frequency scope of flicker curve)**



**Flicker results:**

Flicker frequency:		119.76 Hz	
Flicker index:	0.14	JA8/10 - 40:	0.99 %
Flicker percentage:	44.14 %	JA8/10 - 90:	3.07 %
SVM: (Visual flicker)	1.57	JA8/10 - 200:	43.95 %
PstLM:	0.06	JA8/10 - 400:	44.08 %
Mp:	0.18	JA8/10 - 1000:	44.15 %

**Flicker conditions:**

Sample Rate	20000 samples/second
-------------	----------------------