

RA-IP20-Color-30m

FEATURES

- 24 VDC input available
- LED lifetime of 50,000 hours (L70)
- 10 mm overall strip width
- 3M adhesive backing
- Operating temperature of -4°-113° F (-20°-45° C)
- IP20 environmental rating

APPLICATIONS

Some common applications include sign lighting, bias lighting, cove lighting, task lighting, backlighting, accent lighting, and under cabinet lighting.

AVAILABLE VERSIONS

- STN-BBLU-A6A-10B30M-24V
- STN-BGRE-A6A-10B30M-24V
- STN-BRED-A6A-10B30M-24V

ACCESSORIES

Power Supplies



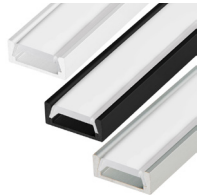
Strip Connectors



Controllers and Switches



Mounting Hardware and Housings



SAMPLE PART NUMBER BREAKDOWN

STN-BRED-A6A-10B30M-24V

| FAMILY / CATEGORY / COLOR | | | LED TYPE / SEGMENT | | IP RATING | SIZE / DENSITY / VOLTAGE | | | |
|---------------------------|------------------------|-------------------------------------|----------------------|-------------------------|-----------------------|--------------------------|---------------------|----------------------|-----------------------|
| STN Strip Type | B Strip Type | RED Color | A LED Type | 6 LED/Segment | A IP Rating | 10 Strip Width | B Density | 30M Length | 24V Voltage |
| STN: Non-weatherproof | B: Single Color | BLU: Blue GRN: Green RED: Red | A: 5050 | 6: 6 LED/seg | A: IP20 | 10: 10 mm | B: 60 LEDs/m | 30M: 98.4 ft (30 m) | 24V: 24 V |

SPECIFICATIONS

| Model STN- | STN-x-A6A-10B30M-24V |
|-------------------|---------------------------------|
| Power Consumption | 3.9 W/ft (384 W total for 30 m) |
| Current Draw | 163 mA /ft |
| Brightness | 305 lm/ft |
| Efficacy | 78 lm/W |
| Beam Angle | 120° |
| Max Run | 23 ft (7 m) |



T 866.811.5550
 F 314.972.6202
 email: commercial-sales@superbrightleds.com
 www.superbrightleds.com/cat/industrial-led-lighting/



Specifications are subject to change without notice.

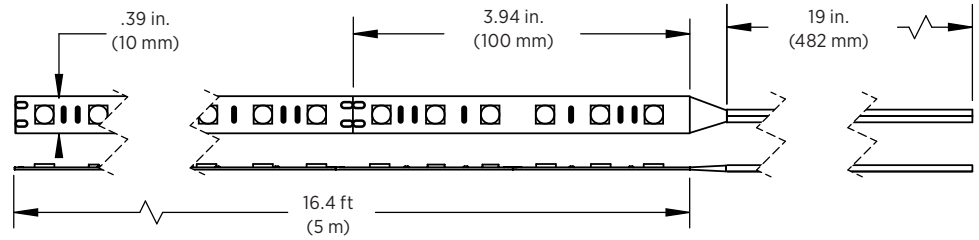
HighLight LED Strip Lights

5050 Strip Specifications

DIMENSIONAL DRAWINGS

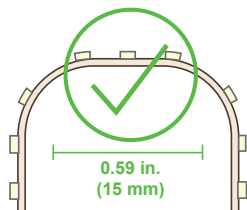
STN-x-A6A-10B30M-24V

- 23 ft (7 m) max run



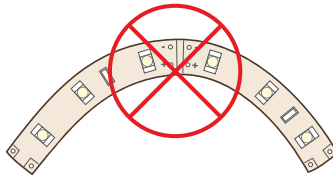
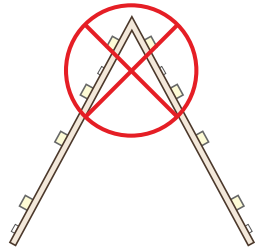
Note: The strip height for all strips shown is 0.08 in. (2 mm).

STRIP FLEXIBILITY



Bends less than 15mm will damage circuit traces and void warranty.

Bending strips at sharp angles will damage circuit traces and void warranty.



Bending strips on horizontal plane will damage circuit traces and void warranty.

NOTES



Specifications are subject to change without notice.

T 866.811.5550

F 314.972.6202

email: commercial-sales@superbrightleds.com

www.superbrightleds.com/cat/industrial-led-lighting/

