

Important: Read all instructions prior to installation.

LED Neon Flex Strip

Included Parts

1 - Neon Flex (10m, 20m, 30m)

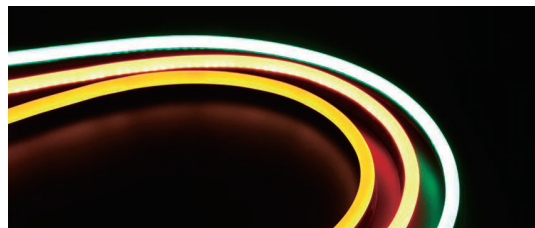
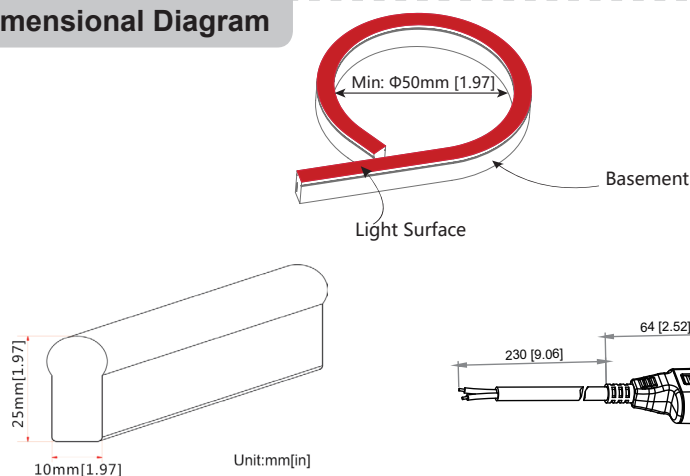
Optional Accessories

3.5cm Aluminum Mounting Profile (NF-MP)
1m Aluminum Mounting Profile (NF-MP1M)
3.5cm Aluminum Profile with Clips (NF-MPC)
1m Aluminum Profile with Clips (NF-MPC1)
90 Degree Interconnect (NF-90)
Interconnect (NF-I)
Solderless Power Connector (NF-PCS)
Power Connector (NF-PC)
End Cap (NF-ECS)
Silicone End Cap (NF-EC)

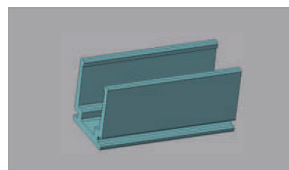
Specifications

NF-x30					
Color	White	Red	Amber	Green	Blue
Lumen per Foot	161 lm	77 lm	138 lm	121 lm	27 lm
Lumen per 15m (49ft)	7950 lm	3800 lm	6800 lm	5950 lm	1300 lm
Lumen per 30m (98ft)	15900 lm	7600 lm	13600 lm	11900 lm	2600 lm
CCT / Wavelength	7465 K	620nm	584nm	518nm	462nm
Total Power Consumption (1ft, 15m, 30m)	9.6 Watts, 144 Watts, 288 Watts				
Input Voltage	22~26 VDC				
Beam Angle	150degree				
LED Type / LED Qty	Epistar / 120pcs				
Operating Temperature	-13~140°F (-25~60 °C)				
IP Rating	IP67				
Cuttable Length	1.9in (5cm)				
LED Lifetime	50,000 Hours				
Product Weight	2.6 oz/ft (221g/m)				
Standards and Certs	UL, CE, RoHs				
Warranty	5 Years				

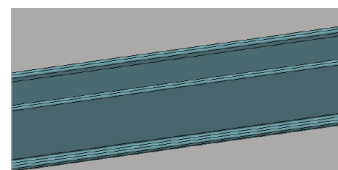
Dimensional Diagram



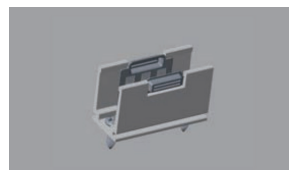
Optional Accessories



NF-MP



NF-MP1M



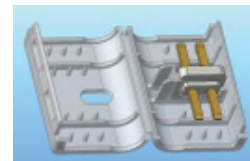
NF-MPC



NF-MPC1



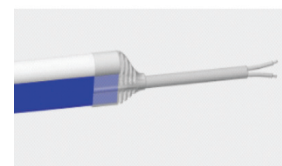
NF-90



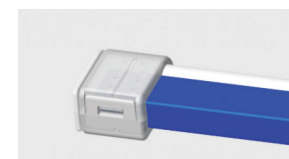
NF-I



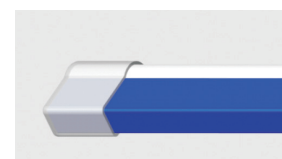
NF-PCS



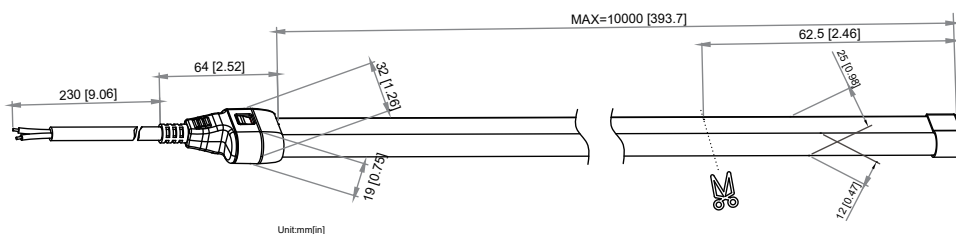
NF-PC



NF-ECS



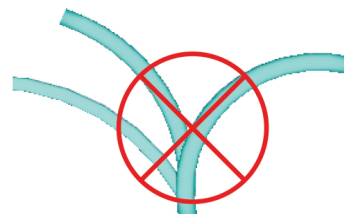
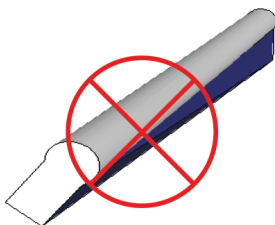
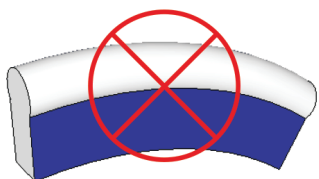
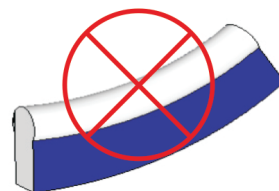
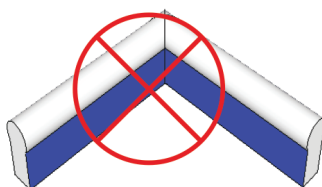
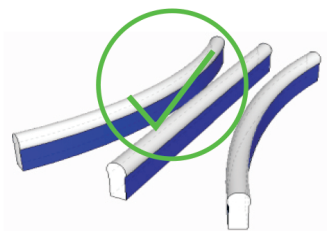
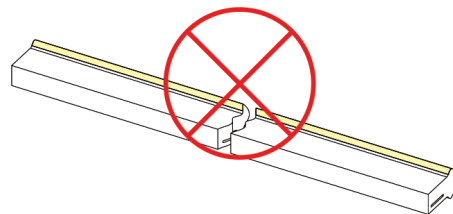
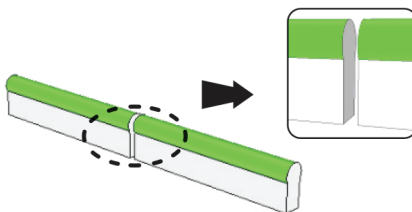
NF-EC



Important: Read all instructions prior to installation.

LED Neon Flex Strip

Warning



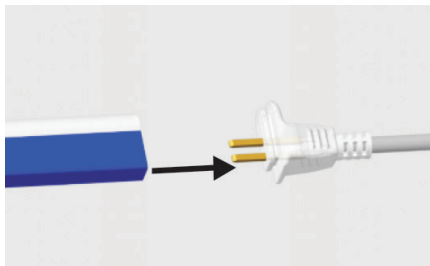
Install Precautions

1. All installation and connections must be conducted by a professional electrician.
2. 24 VDC Class 2 Power Supply must be used with this light. Make sure to use appropriate PSU.
3. Ensure the overall length of the Neon Flex Strip does not exceed the maximum run length as 15m-one end powered; 30m-two ends powered
4. Disconnect power before installing or servicing to avoid electrical shock.
5. For wet location installations, seal all possible water entry points and covers using silicone. Failure to do so may result in a defective product.

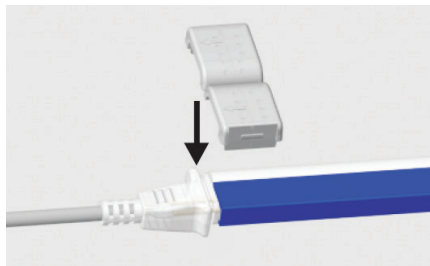
Important: Read all instructions prior to installation.

LED Neon Flex Strip

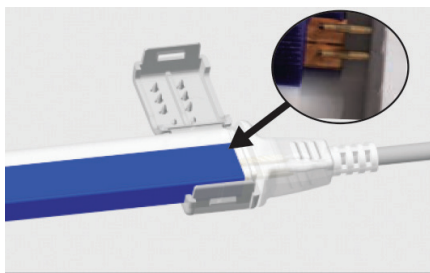
Input Power Installation



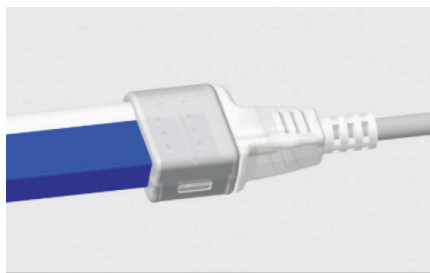
1. Insert the pin into strip. (Note: Pin should be on the back of PCB)



2. Put silicone glue on the joint of strip and housing connector. Put strip into Interconnect Connector.

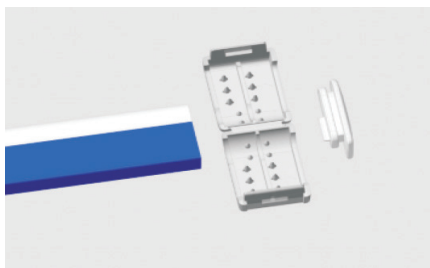


3. Close the Interconnect Connector. Click into place to secure closing.

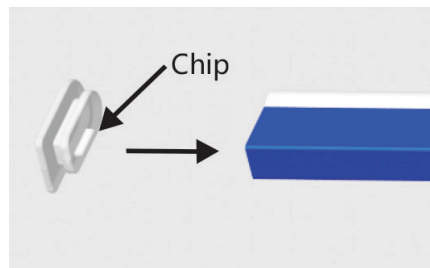


4. Final picture

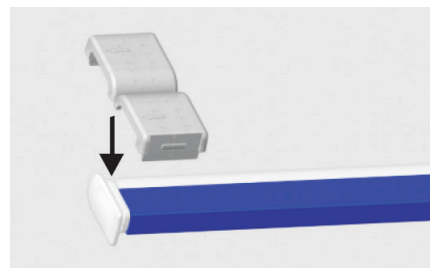
End Cap Installation



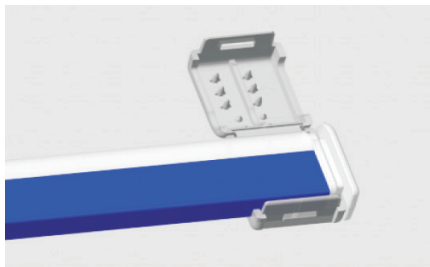
1. End cap structure.



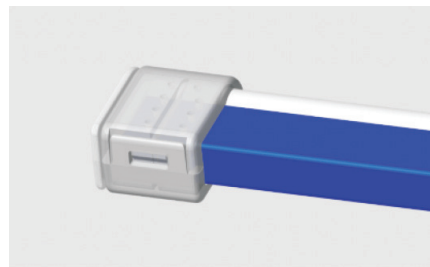
2. Insert the end cap into strip (Note: Chip has to go to back of PCB board)



3. Put silicone glue at joint of strip and housing.



4. Close Interconnect Connector after putting silicone glue on the end.

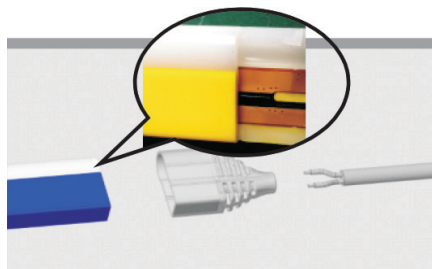


5. Final picture

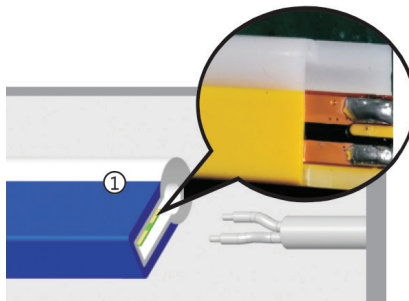
Important: Read all instructions prior to installation.

LED Neon Flex Strip

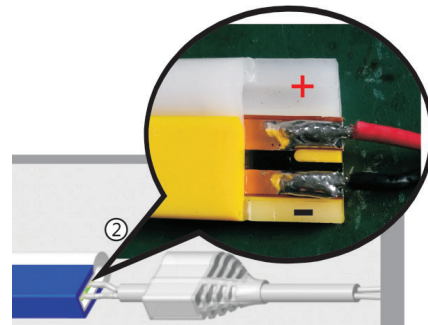
Silicon Fitting Power Installation



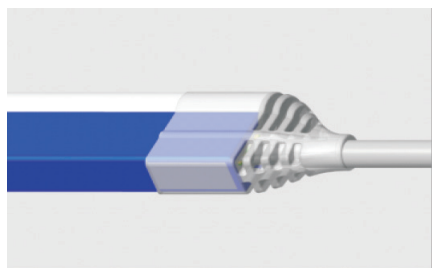
1. Power connector structure.



2. Solder the power lead on the back of the Strip's PCB.

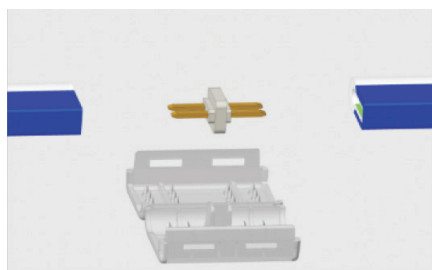


3. Use silicone glue to join the strip and connector housing.

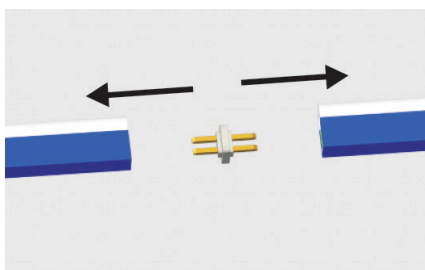


4. Final Picture

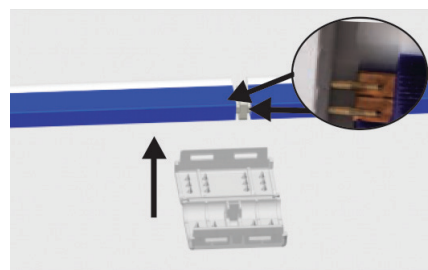
Interconnect Connector Installation Guide



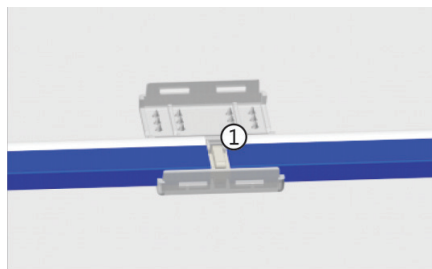
1. Interconnect Connector structure



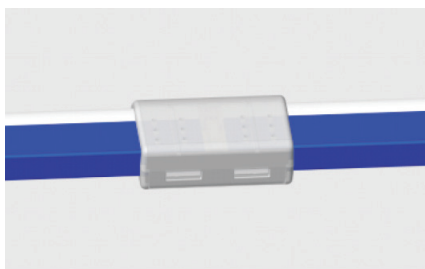
2. Insert pin into strip (Note: Pin should be on the back of PCB)



3. Use silicone glue at joint of strip and housing.



4. Close Interconnect Connector after using silicone glue.

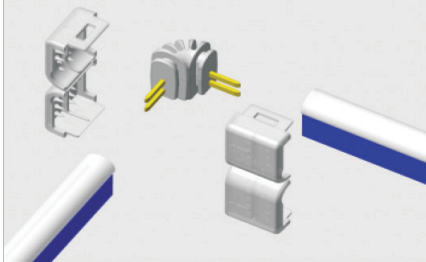


5. Final picture

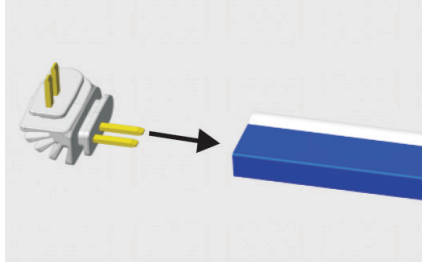
Important: Read all instructions prior to installation.

LED Neon Flex Strip

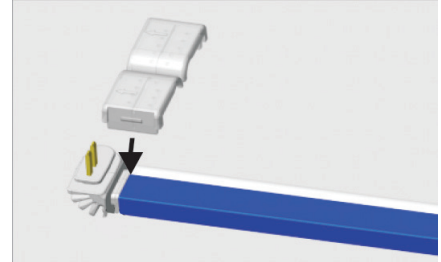
90 Degree Connector Installation



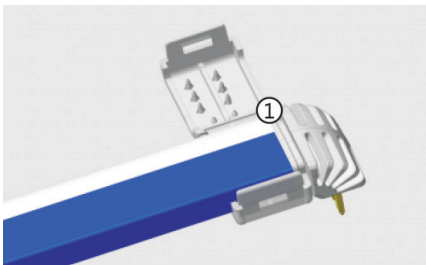
1. 90 Degree Connector structure



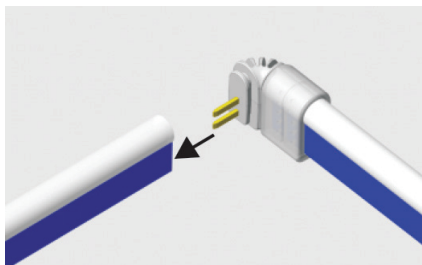
2. Insert pin into strip (Note: Pin should be on the back of PCB)



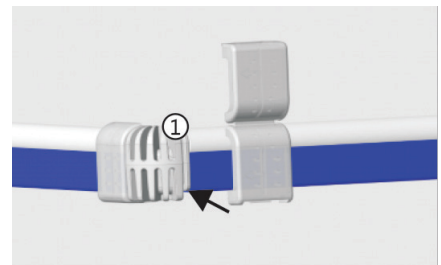
3. Use silicone glue at joint of strip and housing, then put strip back to foldable cap.



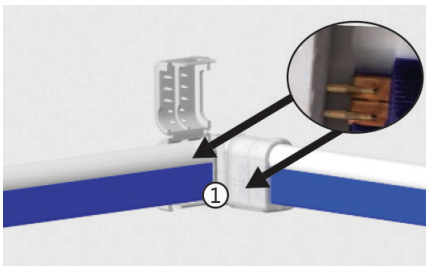
4. After using silicone, close the Interconnect Connector. Click into place to secure closing.



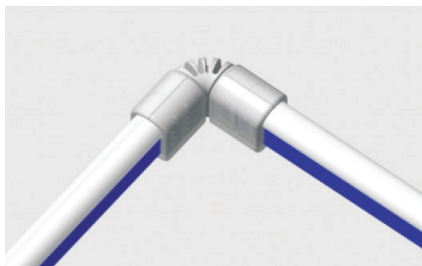
5. Insert pin into other strip (note: pin on the back of PCB).



6. Use silicone glue at joint of strip and housing, then put strip back to foldable cap.

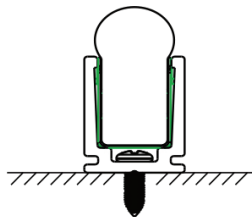
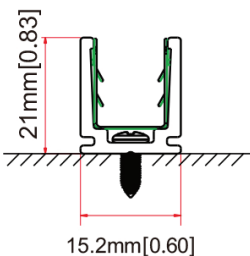


7. Close Interconnect Connector after using silicone glue.



8. Final picture

Mounting Instructions



Important: Read all instructions prior to installation.

LED Neon Flex Strip

Troubleshooting

The whole light doesn't work

- Check that the power supply is plugged in, switched on and receiving power.
- Check all light, dimmer or controller connections, connecting from the power supply to the fixture.
- Check polarity of all wire connections.
- Make sure power supply output voltage is 24V DC.
- Check front connector is inserted into backside of PCB and properly assembled.

Light appears dim or dull at one end.

- Check whether the output voltage of the power supply is lower than that of light.
- Adjust the dimming level to maximum.
- Power from both ends or shorten lighting length to prevent voltage drop.

Light emitting appear excessive brightness.

- Check whether the output voltage of the power supply is higher than that of the light.
- Check whether the power grid is stable.

If the first segment doesn't work.

- Cut not in indicated cutting line or not in a straight line.
- Cut out and remove the first segment.
- Damage caused to the first LED when inserting the front connector to the right side of PCB.
- Cut out the first segment and properly assemble connector.
- Water ingress due to poor connector assembly could cause a short circuit of first segment.
- Replace length with a new one.
- External impact damage inside LEDs.
- Only use your hands to install LED Neon Flex into aluminum profile.

Light is flashing on and off.

- Check the power supply to ensure it supports the length you are using.
- Select the appropriate strength or install an additional power supply to support your installation.
- Check that the power supply output voltage is stable.
- Check front connector is properly installed with good contact with the copper PCB.
- Check proper controller is connected.

