

PRODUCT DESCRIPTION

Possibly the smallest extrusion with which you can obtain a line of light. The LINO extrusion is useful in interior design, furniture, exhibitions. Mounted to the surface with two-sided tape or adhesives.



Fixture Certified to NSF 2 standards
when assembled by KLUŚ

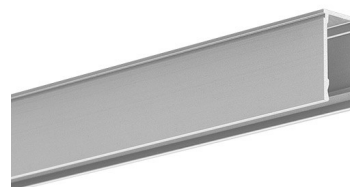


Closet Rated

- Minimum dimensions for creating lines of light
- Effect of a narrow line of light
- Designed to reach an IP67 waterproof rating

FINISH :

Silver anodized



Fill empty fields

Product nr.	
Fixture type	
Company	
Job name	
Date	

TECHNICAL SPECIFICATION

Application

- intended for illumination with a narrow line of light, in grooves, or for attaching various functional and architectural elements, stage design and exhibition forms

Mounting

- with mounting adhesives, professional double-sided tape

Additional information

- frosted covers (diffusers) and aluminum-colored plastic end caps are available for this extrusion
- space for LED strip: 0.28" / 7.2 mm

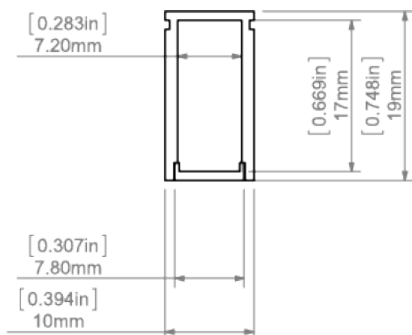
Possibility of making a linear fixture with IP67 protection, which means the fixture is dustproof and waterproof.

Turn off LED lights during peak day light hours in outdoor applications to avoid excessive heat buildup which will result in diminished LED life.

AVAILABLE LENGTHS

Ref. nr.	surface finish	available lengths
B8287ANODA_1	Silver anodized	39.4"
B8287ANODA_2	Silver anodized	78.75"

TECHNICAL DRAWING



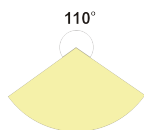
RELATED PRODUCTS

COVERS

FROSTED COVERS

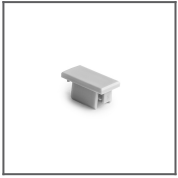


PIKO Cover
Ref: 17034



END CAPS

REGULAR END CAPS



LINO grey End
cap
Ref: 24201

ELECTRONICS

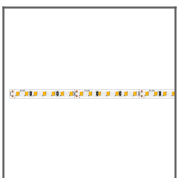
SWITCHES



Proximity switch
UNI
Ref: E61579

LED TAPES

WHITE



K-1091-24V
Ref: K-1091-24

MARKETING MATERIALS



Presentation set
6
Ref: 90125