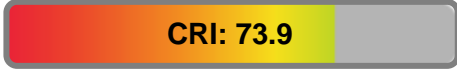


Light efficiency:



Output: 16372 lm

Light quality:



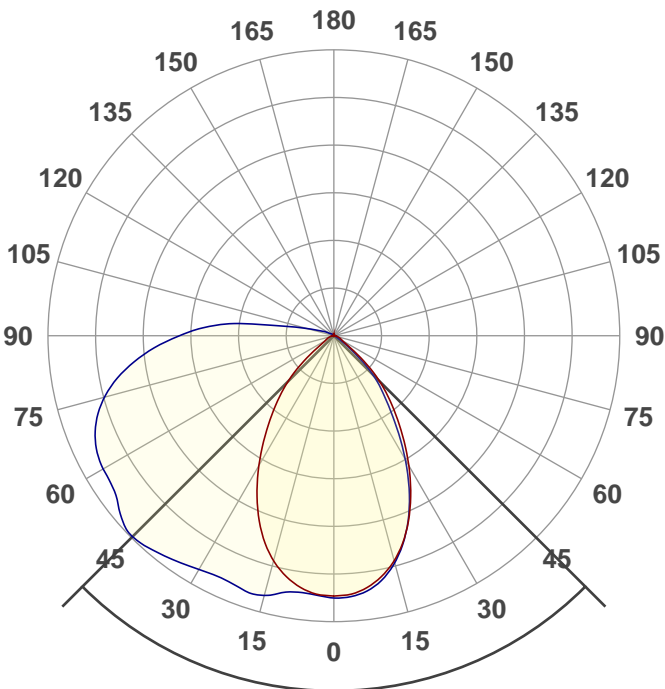
Peak: 7640 cd

Color temperature:



Power: 122.3 W

PF: 1.0



Product name:
WPR2-50K120-FST1-BRP

Light Head Aiming:
rear in default position,
facing straight down;
front rotated up 60°,
facing outward

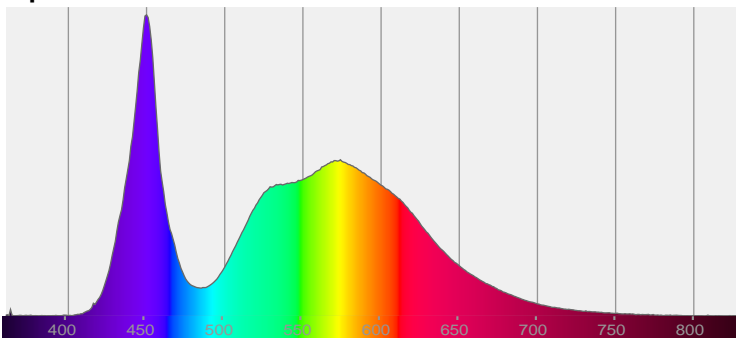
Date and time:
3/10/2021 11:25:49 AM

Beam angle **90.1°**

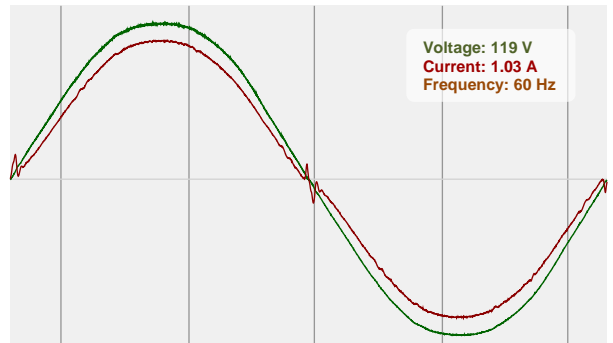


CIE 1931
x: 0.332
y: 0.332

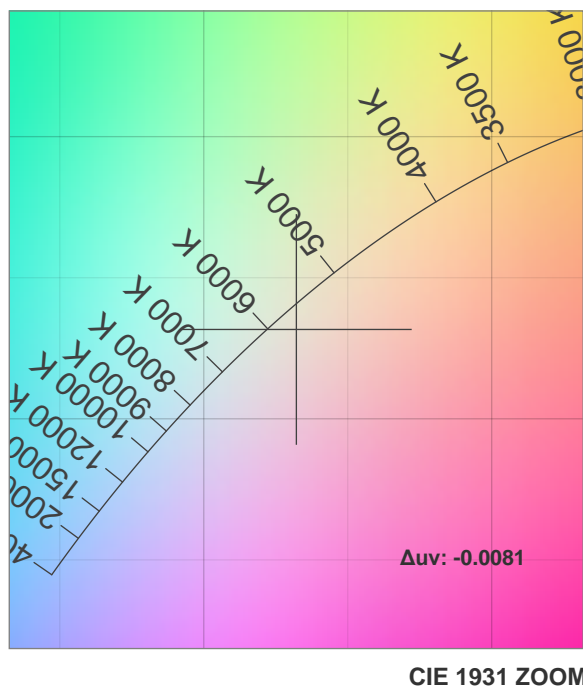
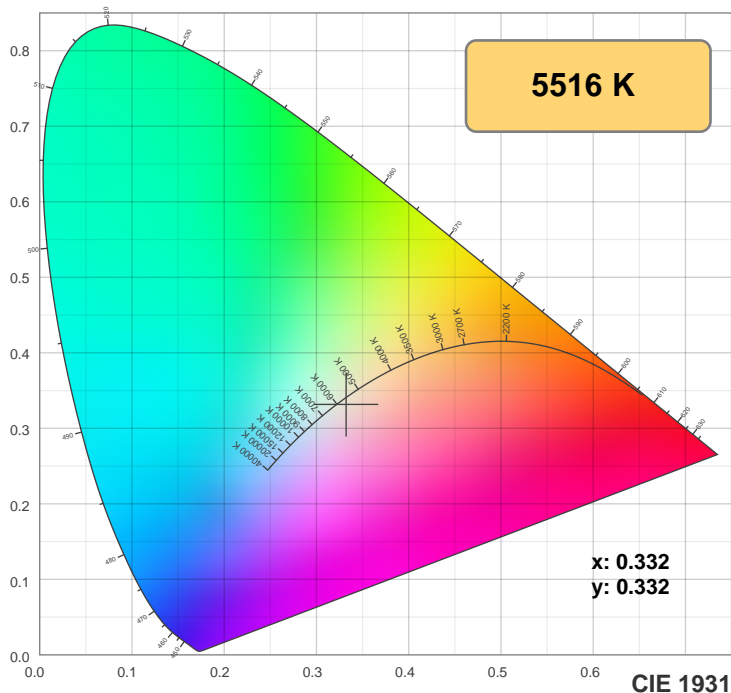
Spectra



Power

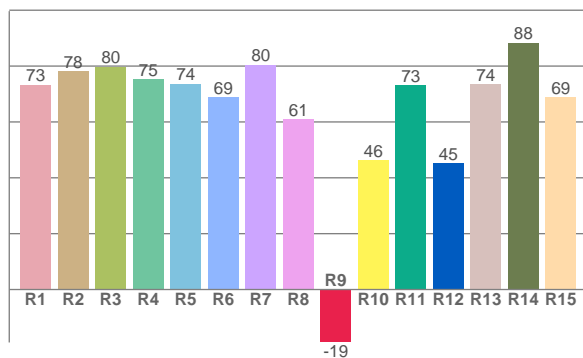
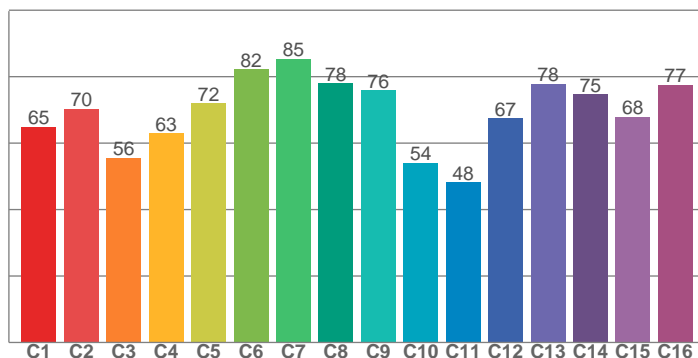


Color Specifications



TM30: 68.7

CRI: 73.9 (R1-R8)



CRI R values, only R1-R8 are used to calculate final CRI value

R1	R2	R3	R4	R5	R6	R7	R8	R9	R10	R11	R12	R13	R14	R15
73.3	78.3	79.8	75.4	73.7	68.9	80.4	61.0	-19.0	46.3	73.1	45.2	73.6	88.4	68.9

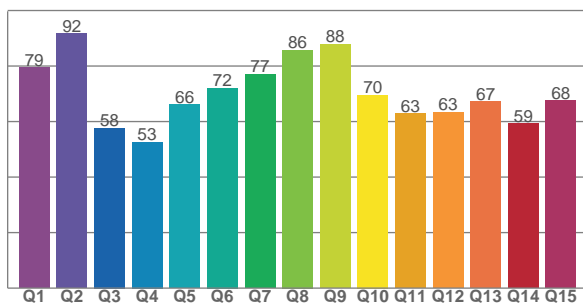
TM30 C values, 16 binned values out of total of 99 C values

C1	C2	C3	C4	C5	C6	C7	C8	C9	C10	C11	C12	C13	C14	C15	C16
65.0	70.3	55.5	62.9	72.0	82.2	85.3	78.0	75.9	54.0	48.2	67.4	77.8	74.7	67.9	77.5

CQS Q values

Q1	Q2	Q3	Q4	Q5	Q6	Q7	Q8	Q9	Q10	Q11	Q12	Q13	Q14	Q15
79.5	91.6	57.7	52.6	66.0	72.1	77.0	85.8	87.8	69.6	62.9	63.3	67.2	59.3	67.6

CQS: 68.6



Color parameters

Color temperature	Color rendering index	Red component	Color fidelity	Color gamut	Color quality scale	Color coordinate cie 1931	Color coordinate cie 1931	Color coordinate	Color coordinate	Color division from black body
CCT	CRI	CRI R9	TM30 Rf	TM30 Rg	CQS	x	y	u	v	Δuv
5516 K	73.9	-19.0	68.7	96.0	68.6	0.332	0.332	0.210	0.315	-0.0081

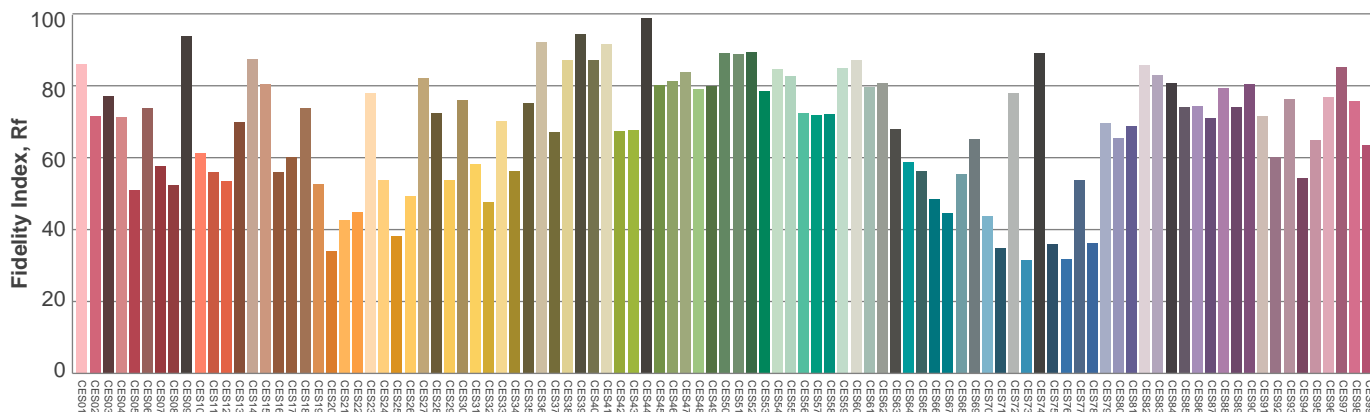
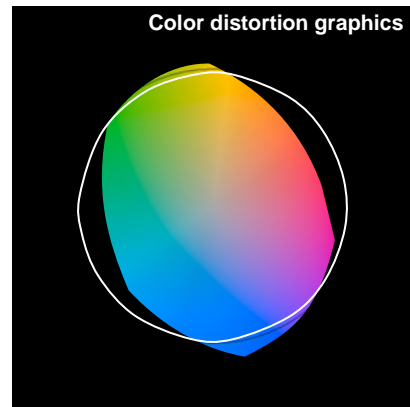
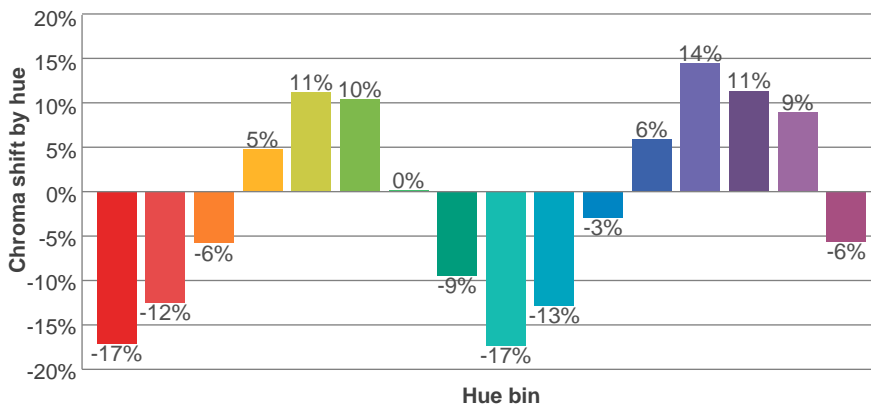
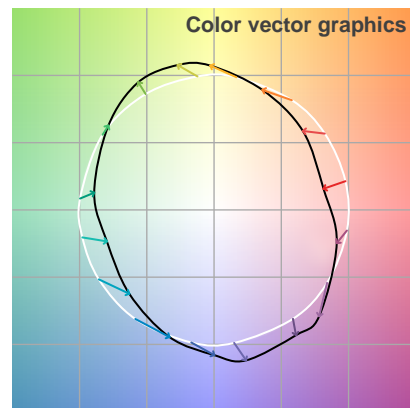
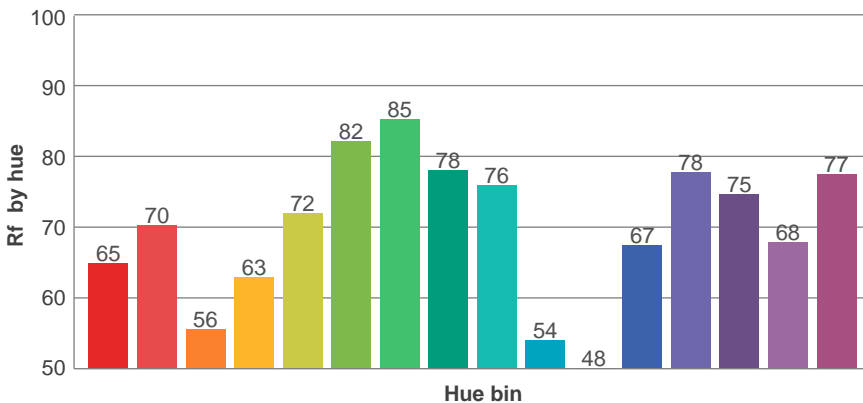
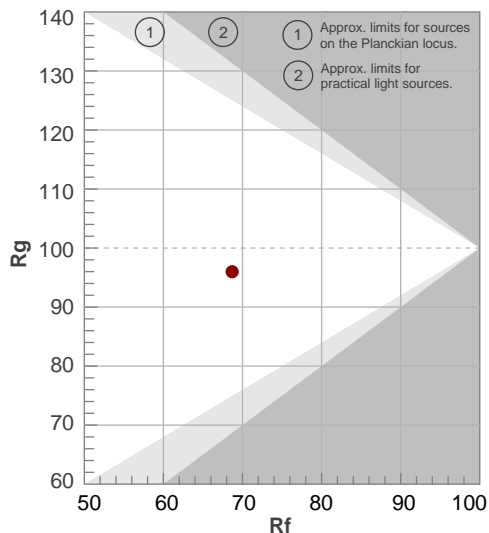


TM30 Report

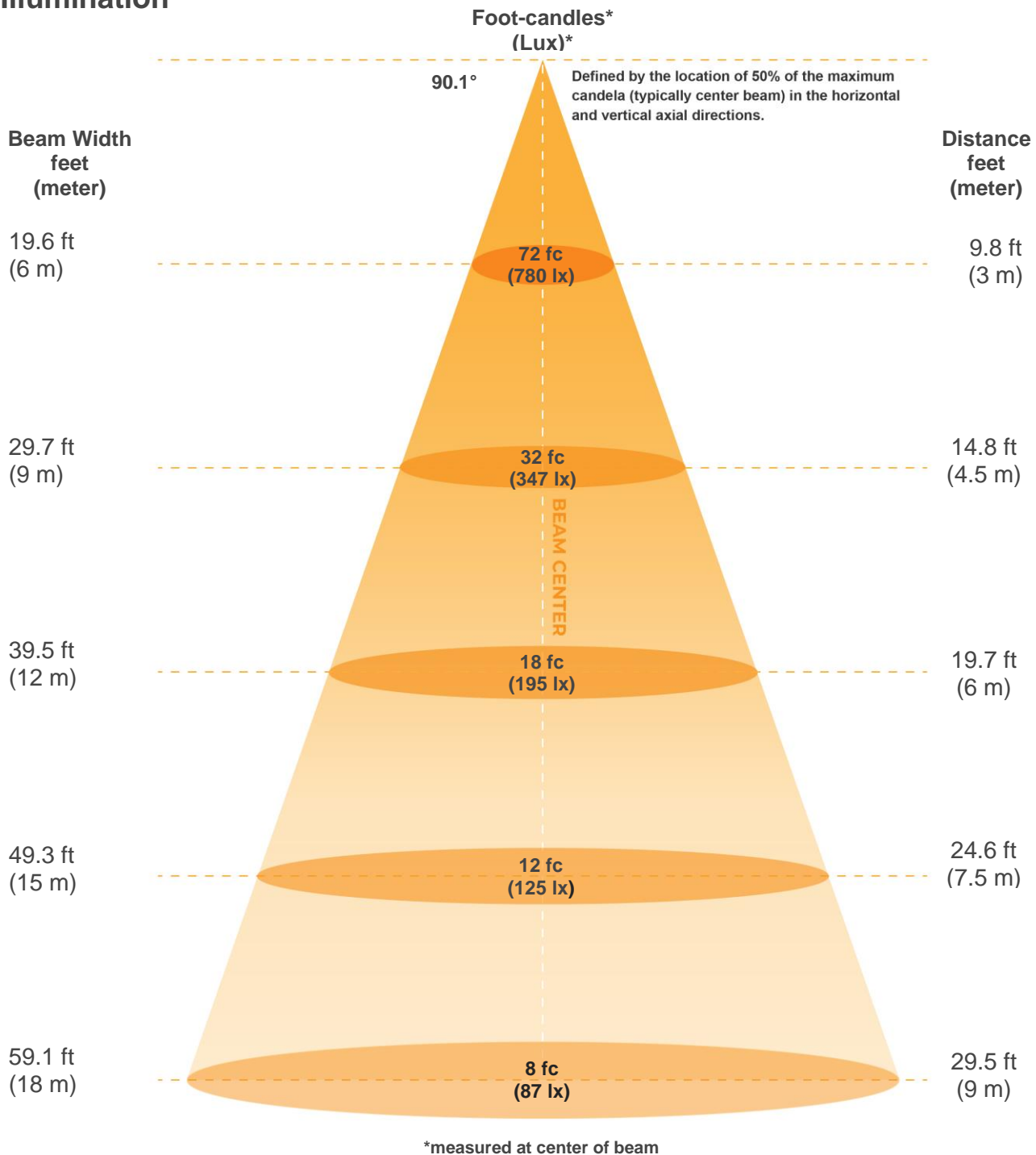
Rf 68.7
Fidelity index Rf

Rg 96.0
Gammut index Rg

Hue Bin	R _f	Graphic shifts (%)	
		Chroma	Hue
1	65	-17%	-2%
2	70	-12%	11%
3	56	-6%	22%
4	63	5%	21%
5	72	11%	13%
6	82	10%	0%
7	85	0%	-8%
8	78	-9%	-6%
9	76	-17%	6%
10	54	-13%	21%
11	48	-3%	29%
12	67	6%	19%
13	78	14%	6%
14	75	11%	-5%
15	68	9%	-24%
16	77	-6%	-11%



Illumination



Beam intensities from 1-20m

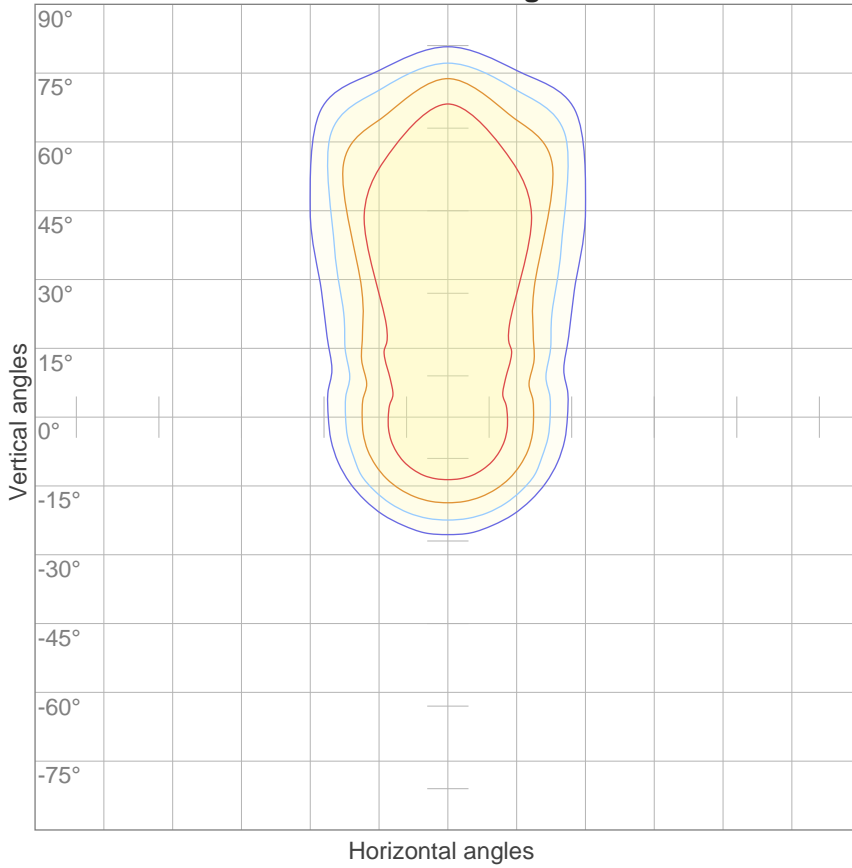
1m	2m	3m	4m	5m	6m	7m	8m	9m	10m	11m	12m	13m	14m	15m	16m	17m	18m	19m	20m
3.3ft	6.6ft	9.8ft	13.1ft	16.4ft	19.7ft	23ft	26.2ft	29.5ft	32.8ft	36.1ft	39.4ft	42.7ft	45.9ft	49.2ft	52.5ft	55.8ft	59.1ft	62.3ft	65.6ft
7019lx	1755lx	780lx	439lx	281lx	195lx	143lx	110lx	87lx	70lx	58lx	49lx	42lx	36lx	31lx	27lx	24lx	22lx	19lx	18lx
652.1fc	163fcd	72.5fcd	40.8fcd	26.1fcd	18.1fcd	13.3fcd	10.2fcd	8.1fcd	6.5fcd	5.4fcd	4.5fcd	3.9fcd	3.3fcd	2.9fcd	2.5fcd	2.3fcd	2fcd	1.8fcd	1.6fcd

Beam angle 50%	Field angle 10%	Cutoff angle 2,5%	Intensity ratio in 120° cone	Intensity ratio in 90° cone
90.1°	134.6°	159.6°	70.1%	53.1%



ISO Diagrams

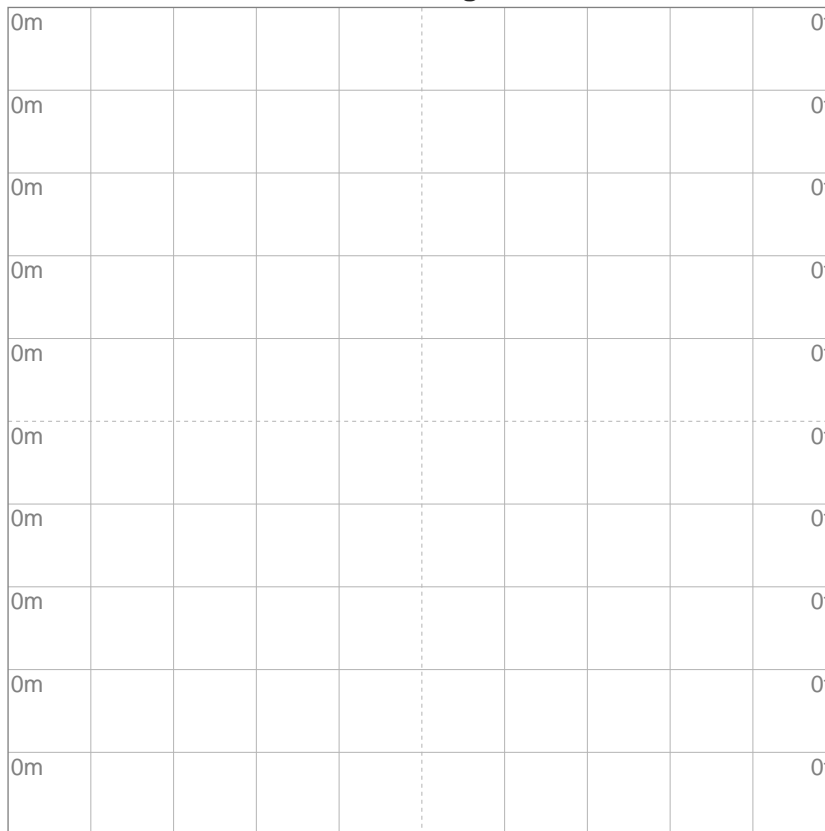
ISO candela diagram



10%	702 cd
20%	1404 cd
30%	2106 cd
40%	2808 cd
50%	3510 cd
60%	4212 cd
70%	4914 cd
80%	5616 cd
90%	6318 cd

Conditions:
 Number of c-planes: 16
 Candela at center: 7019 cd

ISO lux diagram



3%	2.11 lx
5%	3.51 lx
10%	7.02 lx
30%	21.1 lx
50%	35.1 lx

Conditions:
 Number of c-planes: 16
 Lux at center: 70.2 lx

Lux distribution on a surface when lamp is mounted at 10 meters from the surface.

Mounting height: 10 meters (33 feet)



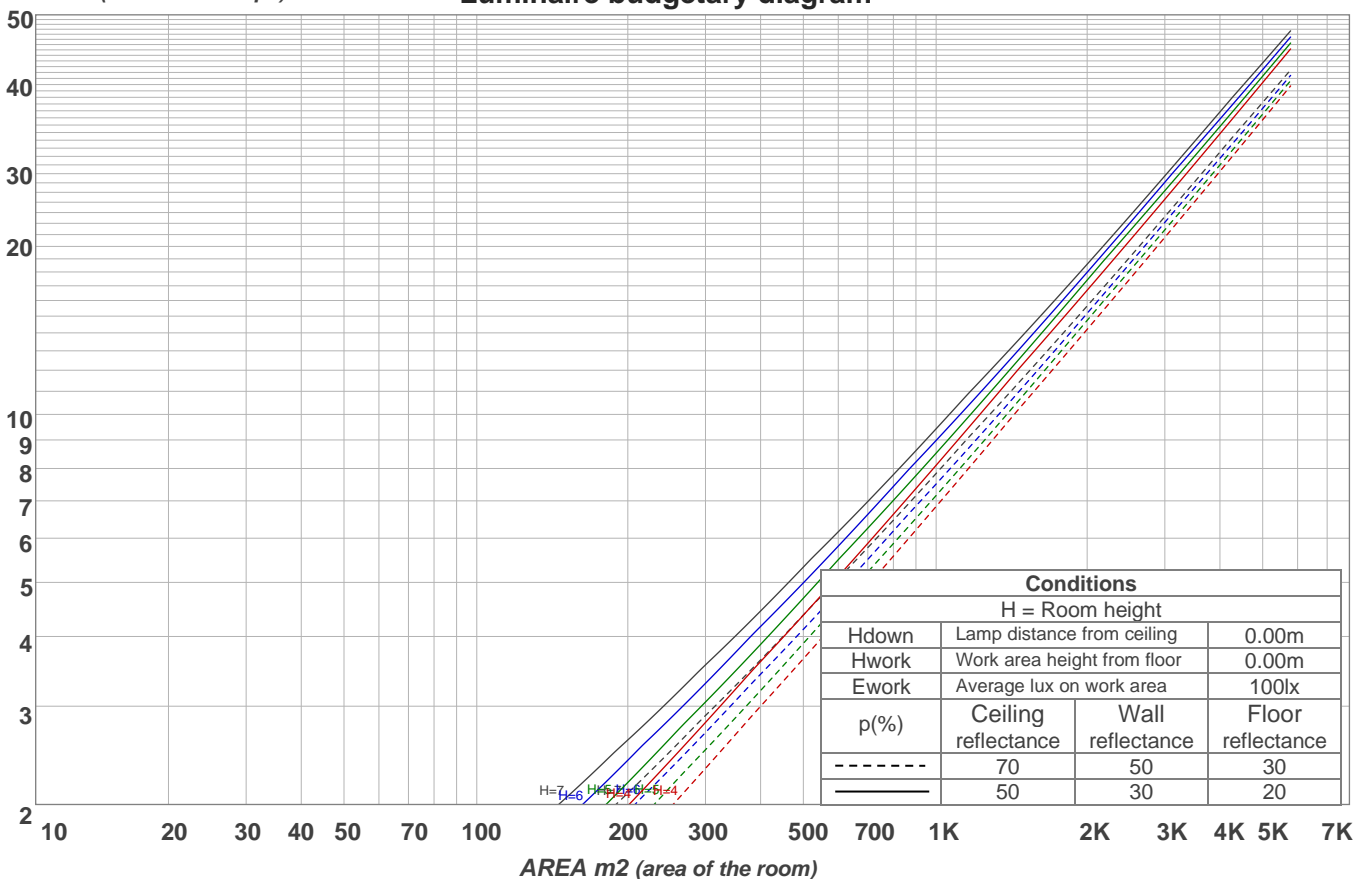
Light Planning

Coefficients of Utilization

Ceiling reflectance	80				70				50			30			10			0	
Wall reflectance	70	50	30	10	70	50	30	10	50	30	10	50	30	10	50	30	10	0	
Floor reflectance	20	20	20	20	20	20	20	20	20	20	20	20	20	20	20	20	20	20	0
RCR	(RCR: Room Cavity Ratio)																		
	Room Values are expressed as percentage of Lumens delivered to the task surface																		
0	118	118	118	118	114	114	114	114	108	108	108	102	102	102	97	97	97	94	
1	106	101	96	91	102	98	93	89	92	89	85	87	84	82	83	80	78	76	
2	96	88	81	75	93	85	79	73	81	75	71	77	72	68	73	69	66	63	
3	88	78	69	63	85	76	68	62	72	65	60	68	63	58	65	60	56	54	
4	81	69	61	54	79	68	59	53	64	57	52	61	55	50	58	53	49	47	
5	75	62	54	47	73	61	53	47	58	51	45	56	49	44	53	48	43	41	
6	70	57	48	42	68	55	47	41	53	46	40	51	44	40	49	43	39	37	
7	65	52	43	37	63	51	43	37	49	42	36	47	40	36	45	39	35	33	
8	61	48	39	34	59	47	39	33	45	38	33	43	37	32	42	36	32	30	
9	57	44	36	31	55	43	36	30	42	35	30	40	34	29	39	33	29	27	
10	54	41	33	28	52	40	33	28	39	32	27	37	31	27	36	31	27	25	

LAMPS (number of lamps)

Luminaire budgetary diagram



Zonal Lumen Summary

0°-10°	10°-20°	20°-30°	30°-40°	40°-50°	50°-60°	60°-70°	70°-80°	80°-90°
658 lm	1819 lm	2480 lm	2541 lm	2274 lm	1710 lm	1539 lm	1360 lm	1013 lm
90°-100°	100°-110°	110°-120°	120°-130°	130°-140°	140°-150°	150°-160°	160°-170°	170°-180°
601 lm	237 lm	64.0 lm	29.2 lm	17.4 lm	12.2 lm	9.31 lm	6.09 lm	2.11 lm

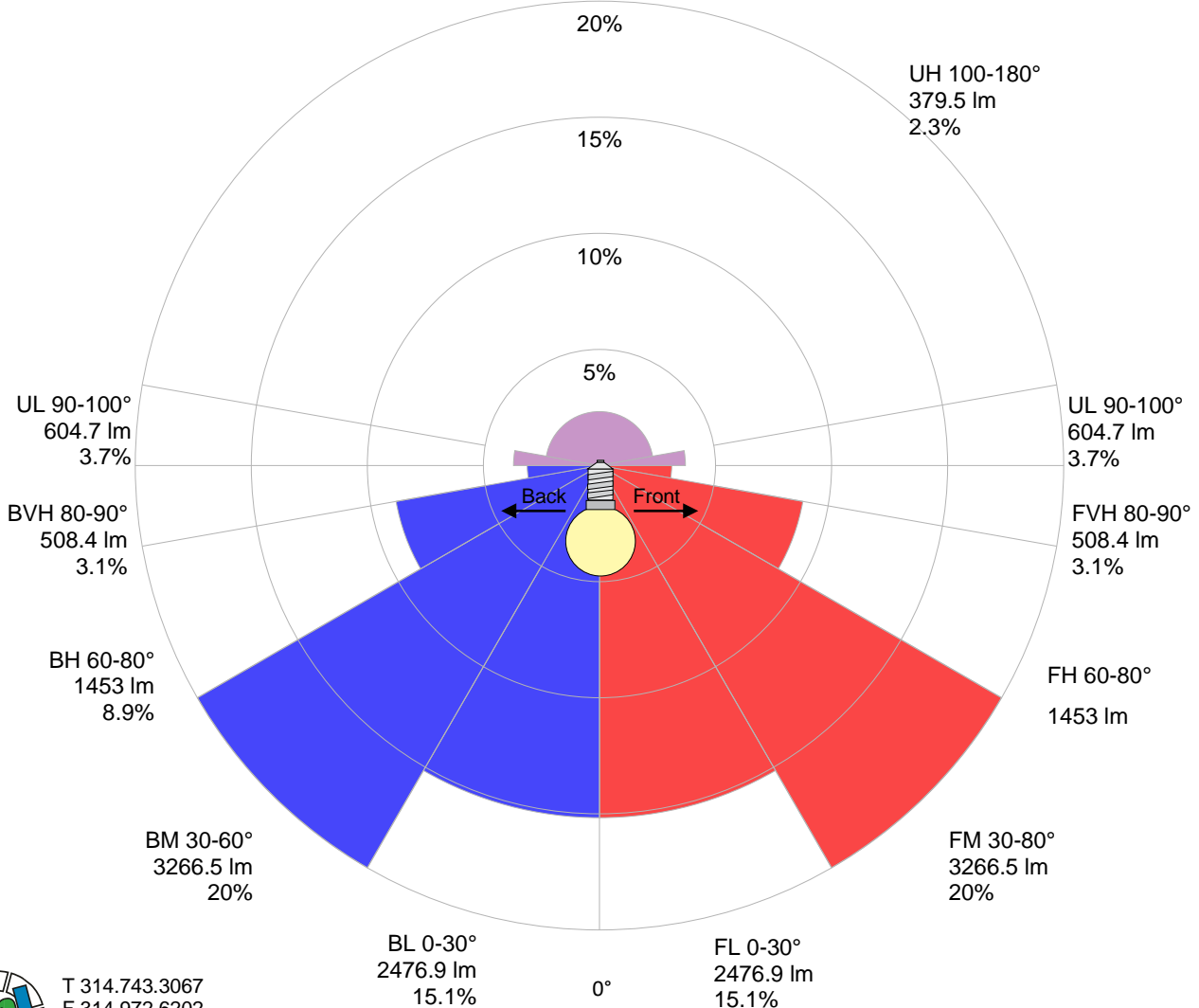


Road Report

LCS table

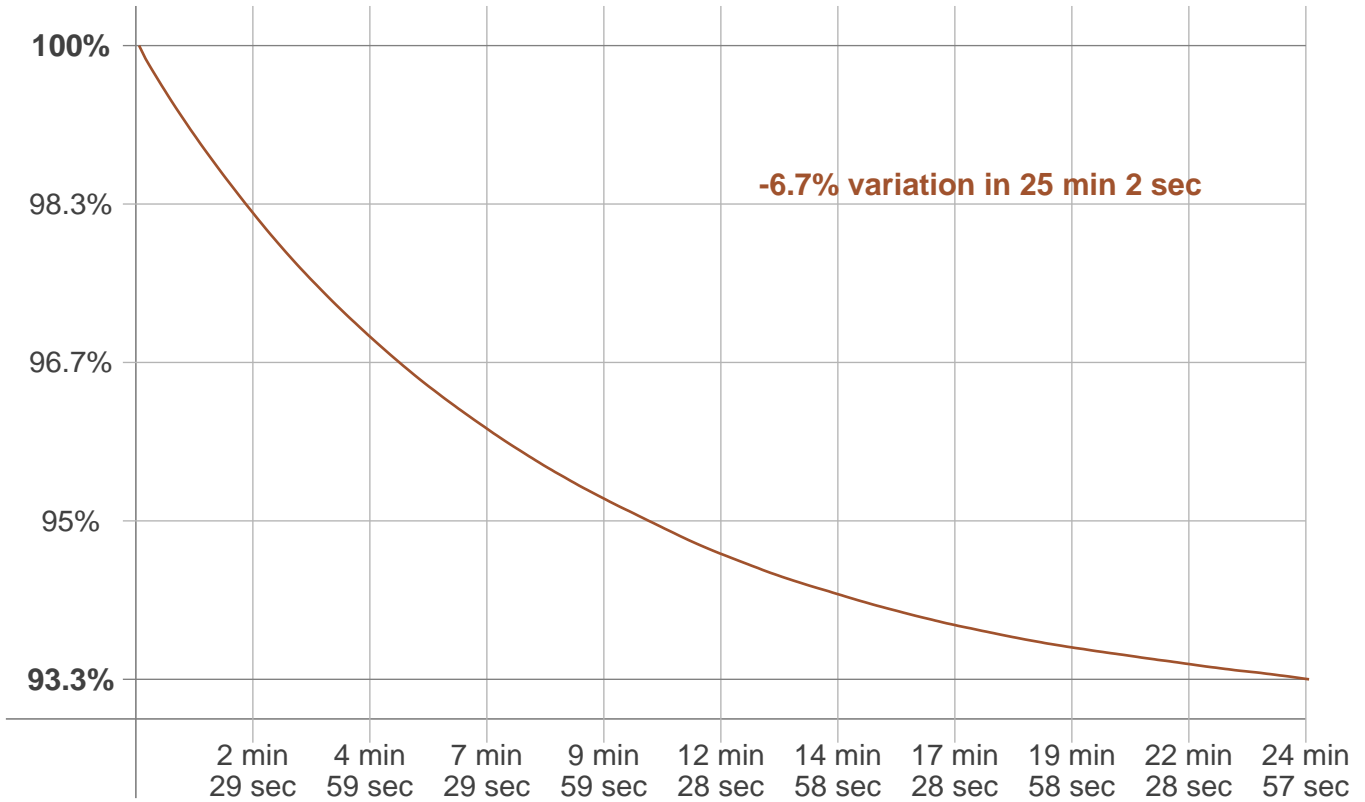
BUG rating:	B3 U4 G4	
Forward light	Lumens	Lumens %
Low(0-30):	2476.9	15.1%
Medium(30-60):	3266.5	20%
High(60-80):	1453	8.9%
Very high(80-90):	508.4	3.1%
Back light		
Low(0-30):	2476.9	15.1%
Medium(30-60):	3266.5	20%
High(60-80):	1453	8.9%
Very high(80-90):	508.4	3.1%
Uplight		
Low(90-100):	604.7	3.7%
High(100-180):	379.5	2.3%

LCS graph



Stabilization

Warmup curve



Warmup result

Warmup time:	25 min 2 sec
Warmup variation	-6.7%

Warmup conditions

Stable period:	15 min
Stable change max:	2.0%
Minimum time:	15 min

Color temperature change

CCT start	CCT change	CCT end
5423 K	+93 K	5516 K

Output change

Output start	Output change	Output end
17511 lm	-1139 lm	16372 lm

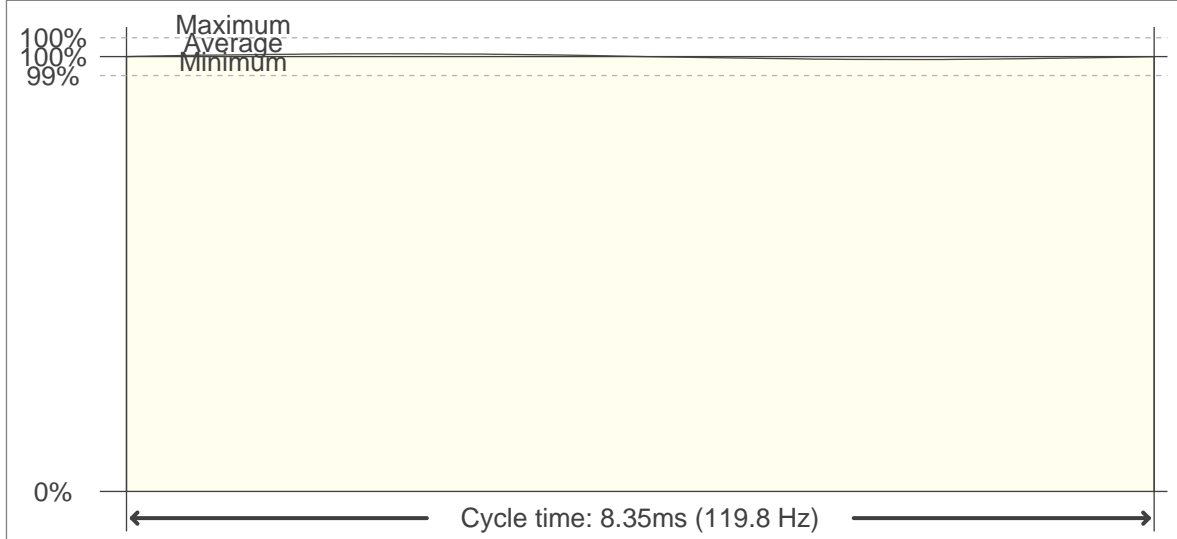


Flicker

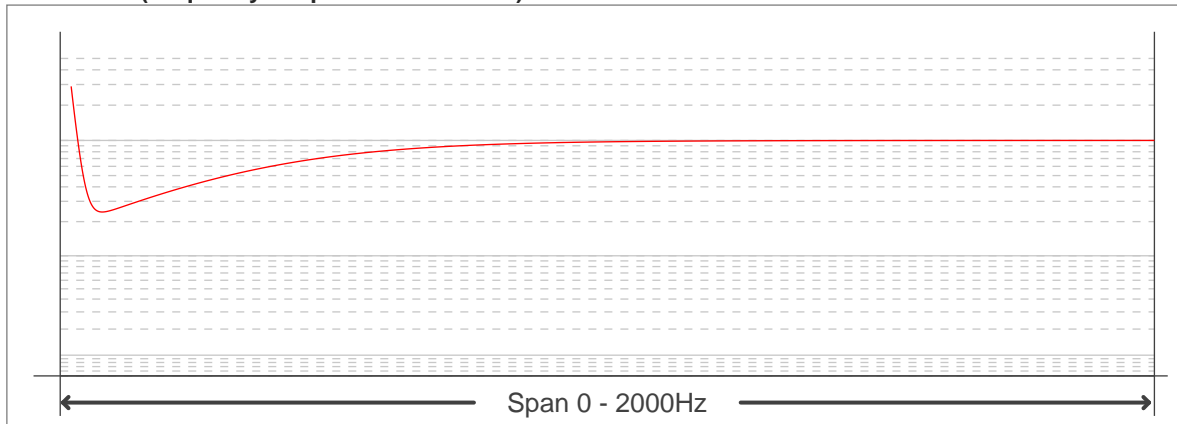
Flicker curve (complete sampled flicker signal)



Flicker frame (frame of one flicker period)



Flicker FFT (frequency scope of flicker curve)



Flicker results:

Flicker frequency:	119.76 Hz
Flicker index:	0
Flicker percentage:	0.68 %
SVM: (Visual flicker)	0.02

Flicker conditions:

Sample rate:	40000 samples/second
---------------------	-----------------------------

