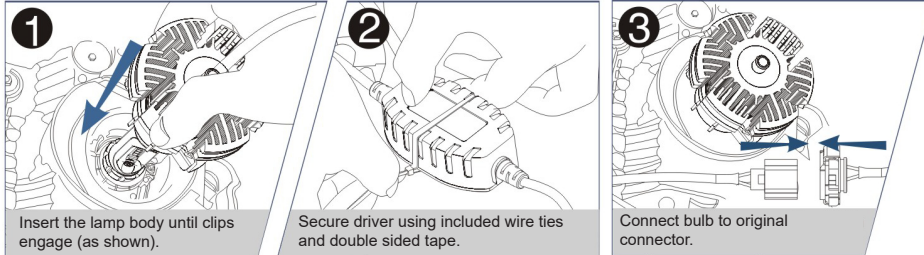


Important: Read all instructions prior to installation.

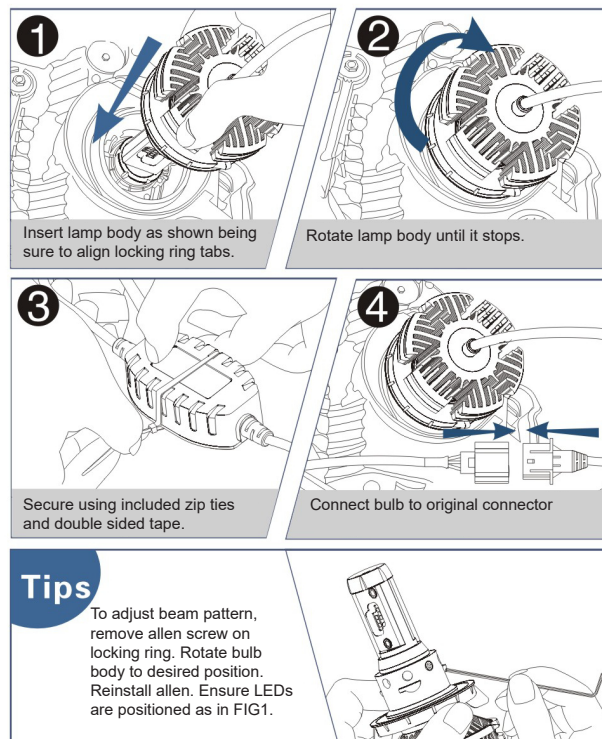
## LED Headlight Kit

### Installation Instructions H16 / PSX24W



### Installation Instructions

H8 / H11 / H13 / P13W / 9004 / 9005 / 9006 / 9007 / 9012 / PSX26W / P13W / 880 / 881



## LED Headlight Kit Installation Manual HLV5 Series



Important: Read all instructions prior to installation.

### LED Headlight Kit

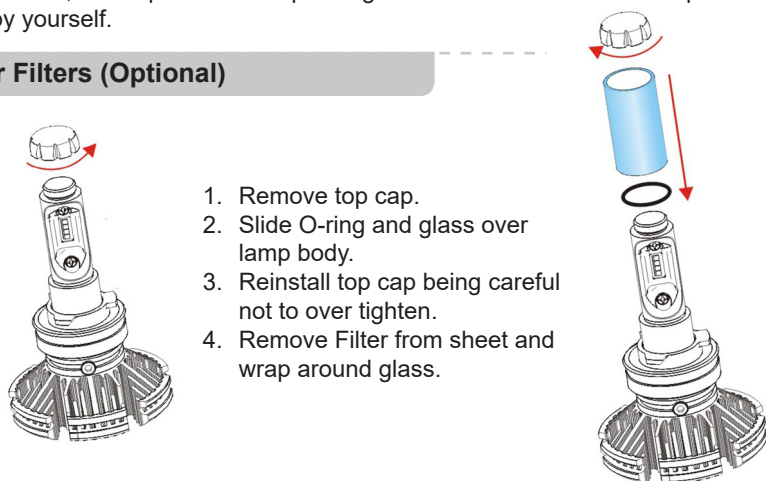
#### Included

- |  |                          |
|--|--------------------------|
| 1 - Amber Filters (4 per sheet)                    | 2 - 3M Double Sided Tape |
| 1 - Cool White Filters (4 per sheet)               | 4 - Zip Ties             |
| 2 - Allen Wrench (1.3mm or 2mm depending on model) |                          |

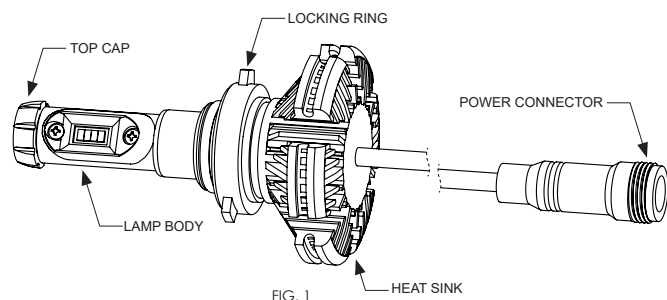
#### Safety and Notes

1. Product shall be installed and serviced by a qualified technician.
2. LED headlight replacements are waterproof when used in an approved headlight housing assembly.
3. Good heat dissipation will prolong the working life of the driver, ensure good ventilation.
4. Check voltage of the vehicle to be sure it complies with working voltage of the product. (9~32 VDC)
5. Ensure all wire connections and polarities are correct before applying power to avoid any damages to the LED lights.
6. If a fault occurs, return product to Super Bright LEDs. Do not attempt to repair this product by yourself.

#### Apply Color Filters (Optional)

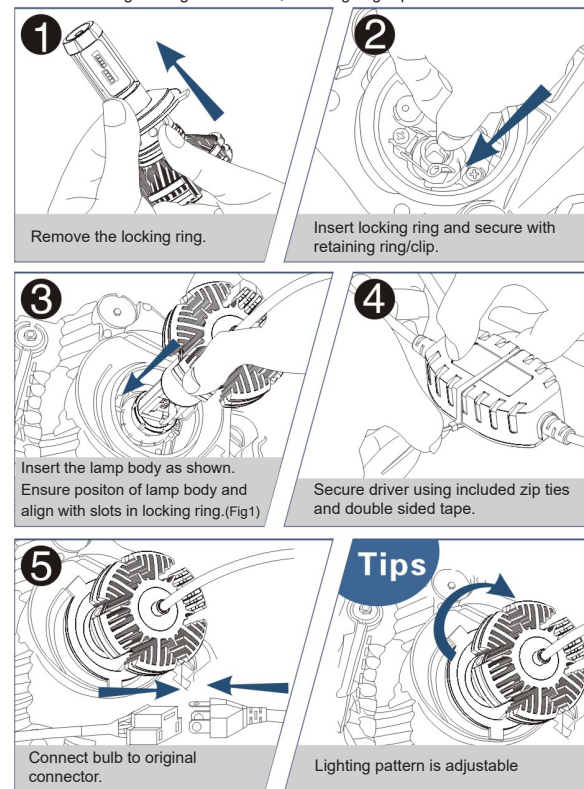


MAKE SURE LEDs ARE SHINING HORIZONTALLY WHEN INSTALLED



#### Installation Instructions H1 / H3 / H4 / H7\*

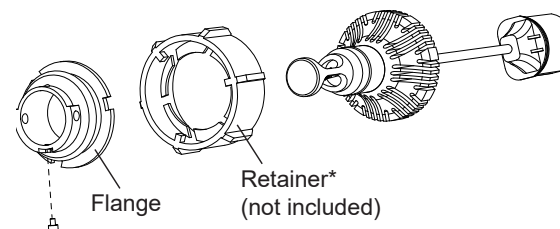
Remove existing headlight dust cover, retaining ring/clip and stock bulb.



\*H7 bulbs may require an additional adapter/retainer on some Buick, BMW, Ford, Kia, Mercedes, Nissan, and VW/Audi models. Check your vehicle before ordering.

#### Installation Instructions 9004/9007

1. Remove hex key screw holding mounting flange to bulb, then slide flange off of bulb.
2. Align three ears on original retainer with three notches on flange and slide.
3. Re-insert bulb into flange then reinstall hex key screw.
4. Install bulb into headlight housing and rotate to adjust beam angle. Lock retainer in place when desired angle is achieved.



\*Note: Some Ford models may require the retainer to be trimmed to clear heat sink on bulb.

