

User Manual

 **matter**
Smart Lighting

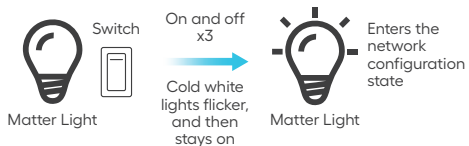


Light Network Configuration

Note:

1. A Matter-certified ecosystem smart home app is required.
2. A Home hub is required to set up matter-certified devices.
3. Setup processes may vary between ecosystems.

① Reset



② Turn on WiFi on your phone.



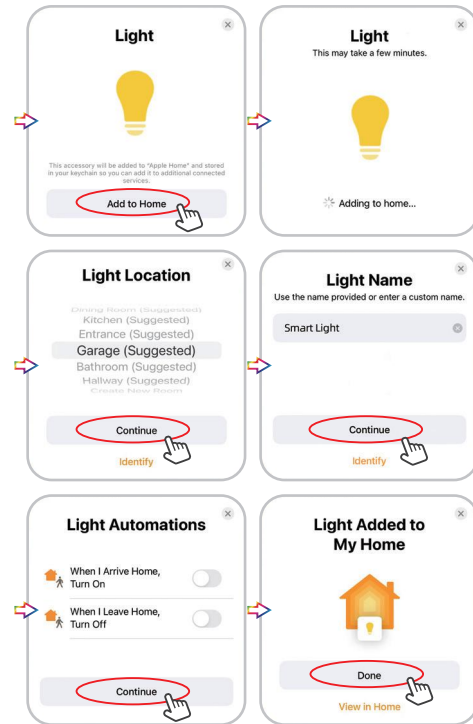
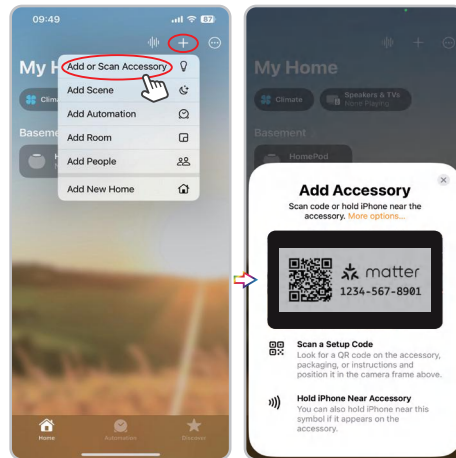
③ Open your selected smart home app and scan the Matter QRcode on the Light.

Light Pair To Home App

Note:

 Make sure the light is flashing.

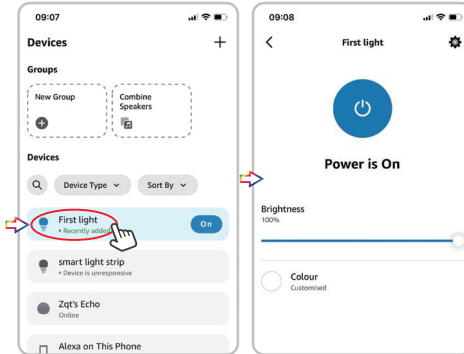
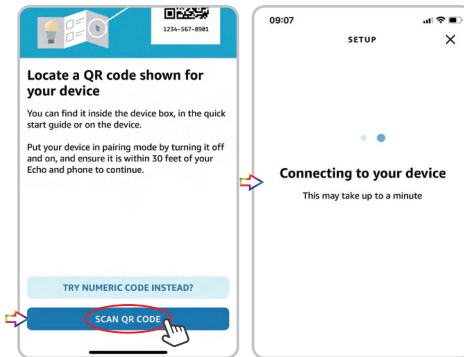
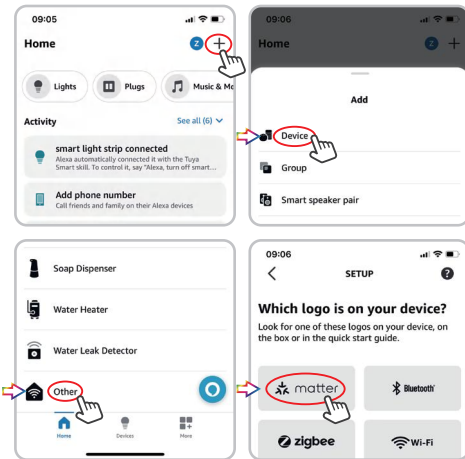
1. Click "+" and then click on "Add or Scan Accessory".
2. Scan the QR code on the device.
3. Select "Add to Home".
4. Connecting to Accessory.
5. Follow the prompts to complete the pairing.



Light Pair To Alexa App

Note: Make sure the light is flashing.

1. Click on "+".
2. Click on "Device".
3. Select "Other".
4. Choose "matter" logo.
5. Click on "SCAN QR CODE".
6. Device found and connected.



Light Pair To Google Home App

Note: Make sure the light is flashing.

1. Click on "+ Add".
2. Select "Matter-enabled device".
3. Scan Matter QR Code.
4. Select "Speakers".
5. Select Add to "Google Home".
6. Follow the prompts to complete the pairing.

