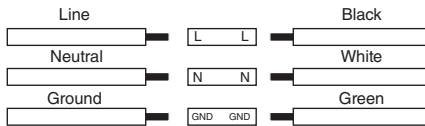


**Important: Read all instructions prior to installation.**

## High Watt LED Flood Lights

### Wiring Diagram



### Specifications

Specifications	FLCU-40K30-110	FLCU-40K50-60	FLCU-40K50-110	FLCU-40K100-60	FLCU-40K100-110	FLCU-40K200-110
Operating Temperature	-4~104°F (-20~40 °C)					
IP Rating	IP65					
Fixture Weight	2.6 lbs (1.17Kg)	3.65 lbs (1.65Kg)		8.36 lbs (3.79Kg)		13.7 lbs (6.21Kg)

Check product label for specific electrical specifications related to installation.  
Improper installation will void warranty.

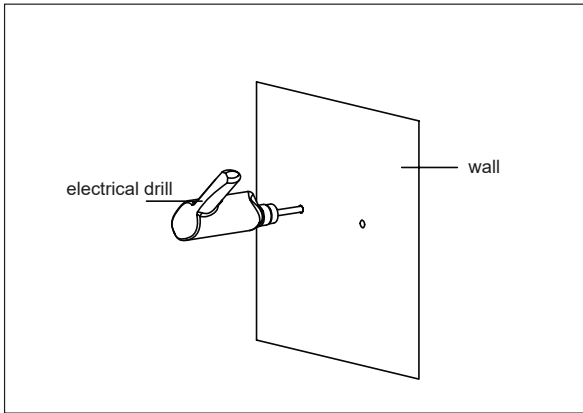
### Warnings

- This product should be installed by a fully certified electrician in accordance with local building and electrical codes.
- Due to risk of electric shock, ensure that the main power source and circuit breakers are switched off before performing any installation or wiring procedures.
- Failure to properly support the fixture during installation may cause damage or injury, for which the manufacturer is not responsible. Ensure the light bracket is securely mounted and will support the weight of the fixture.

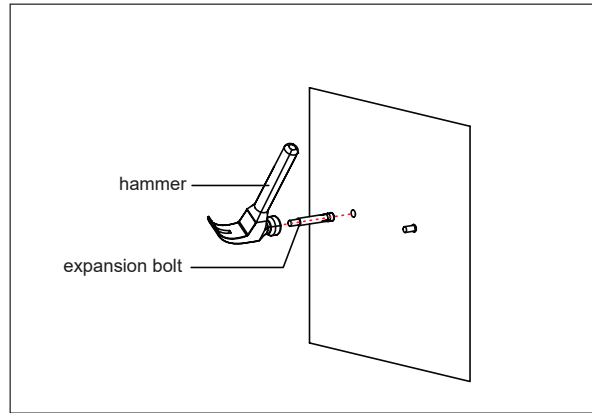
**Important: Read all instructions prior to installation.**

## High Watt LED Flood Lights

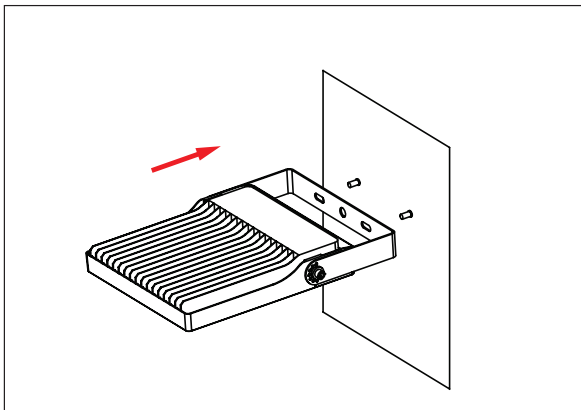
### Instructions



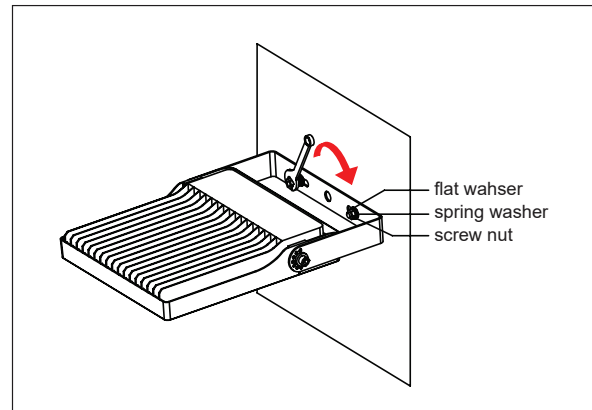
1. Use the mounting bracket to mark out bolt holes on the wall and then drill holes.(Fig 1)



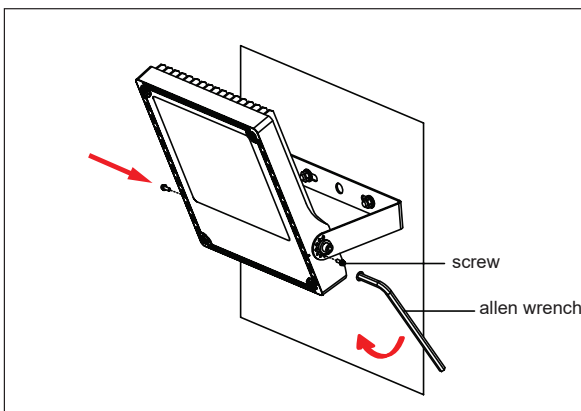
2. Drive the bolts into the holes with the threading facing outward.(Fig 2)



3. Place the mounting bracket over the bolts and push it flush with the wall.(Fig 3)



4. Fasten the nuts on the bolts to tighten the mounting bracket to the wall.(Fig 4)



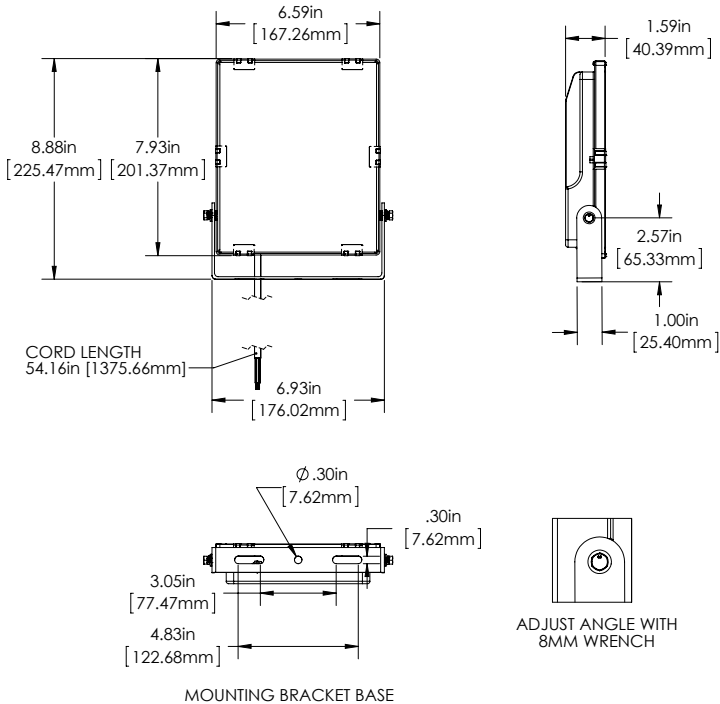
5. Rotate the light to the desired angle and tighten screws with an allen driver. (Fig 5)

**Important: Read all instructions prior to installation.**

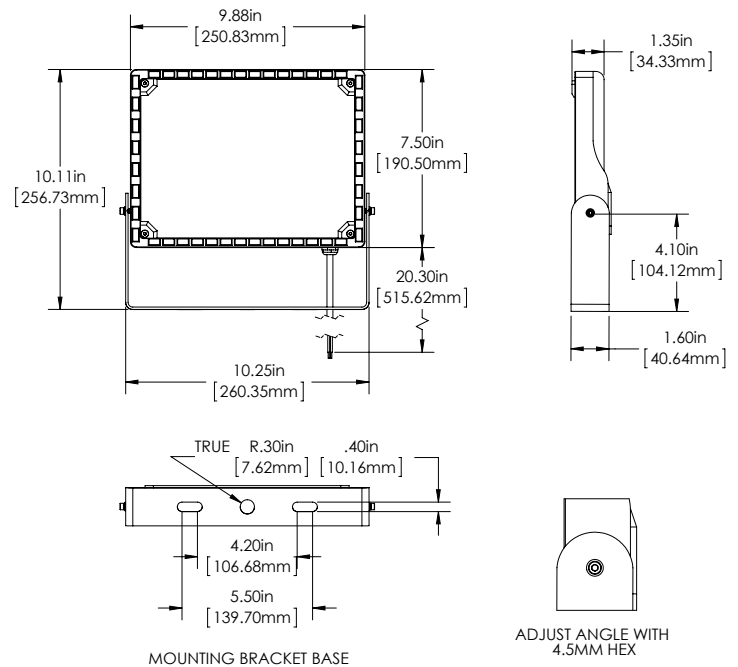
## High Watt LED Flood Lights

### Dimensional Drawings

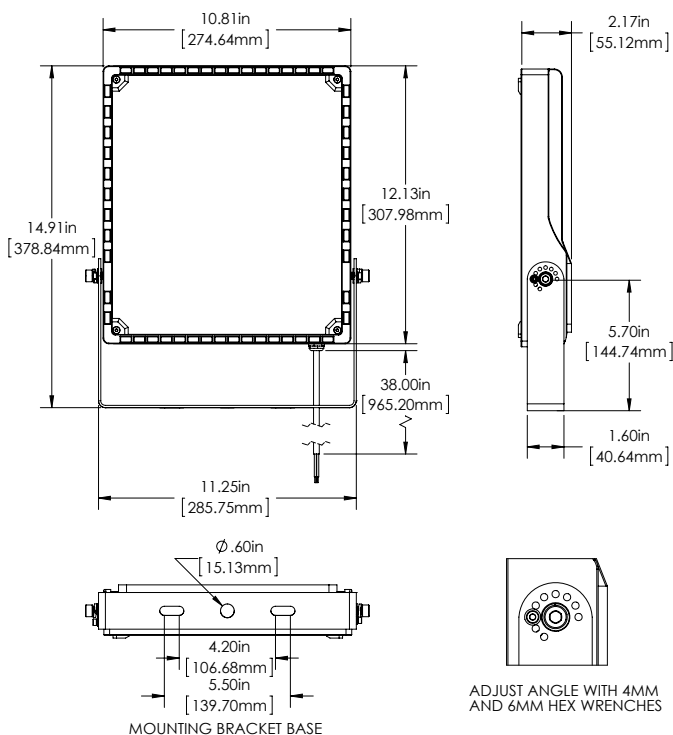
#### FLCU-40K30-100



#### FLCU-40K50-60, FLCU-40K50-110



#### FLCU-40K100-60, FLCU-40K100-110



#### FCLU-40K200-110

