

superbrightleds.com

LED Headlight Kit Installation Manual HLV5 Series



866-590-3533 support@superbrightleds.com

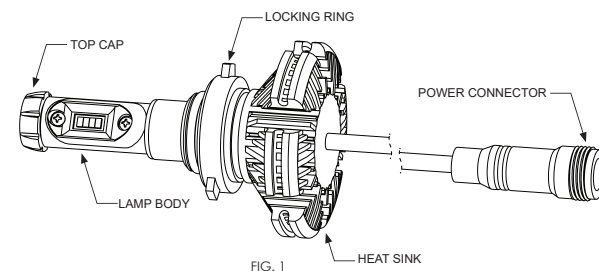
Included

- 1 - Amber Filters (4 per sheet)
- 1 - Cool White Filters (4 per sheet)
- 2 - Allen Wrench (1.3mm or 2mm depending on model)
- 2 - 3M Double Sided Tape
- 4 - Zip Ties

Safety and Notes

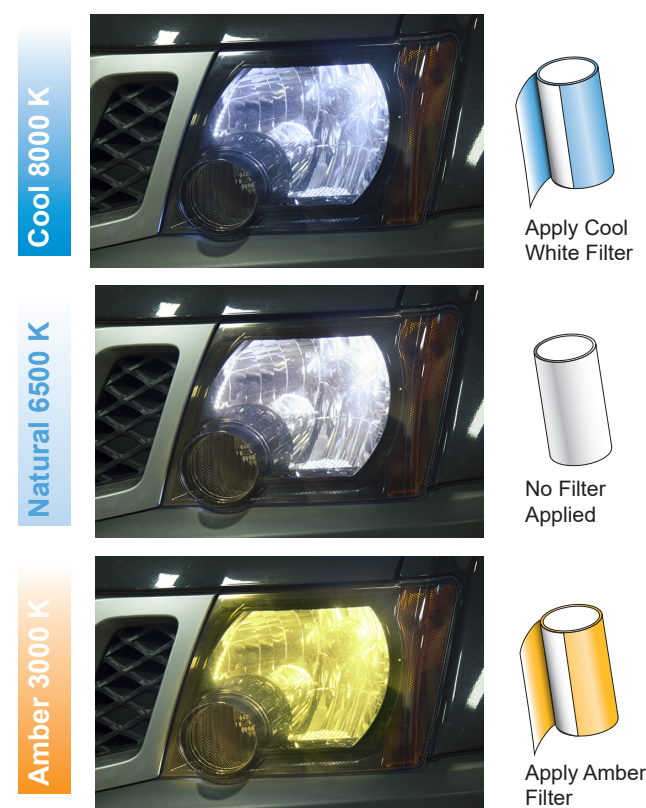
1. Product shall be installed and serviced by a qualified technician.
2. LED headlight replacements are waterproof when used in an approved headlight housing assembly.
3. Good heat dissipation will prolong the working life of the driver, ensure good ventilation.
4. Check voltage of the vehicle to be sure it complies with working voltage of the product. (9~32 VDC)
5. Ensure all wire connections and polarities are correct before applying power to avoid any damages to the LED lights.
6. If a fault occurs, return product to Super Bright LEDs. Do not attempt to repair this product by yourself.

MAKE SURE LEDS ARE SHINING HORIZONTALLY WHEN INSTALLED



866-590-3533 support@superbrightleds.com

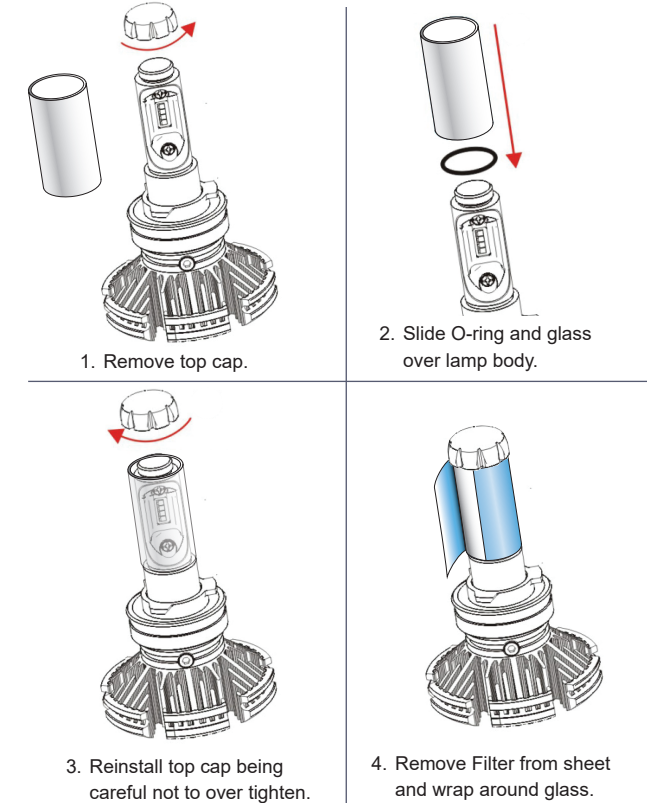
Available Color Temperatures



866-590-3533 support@superbrightleds.com

Optional Color Filters

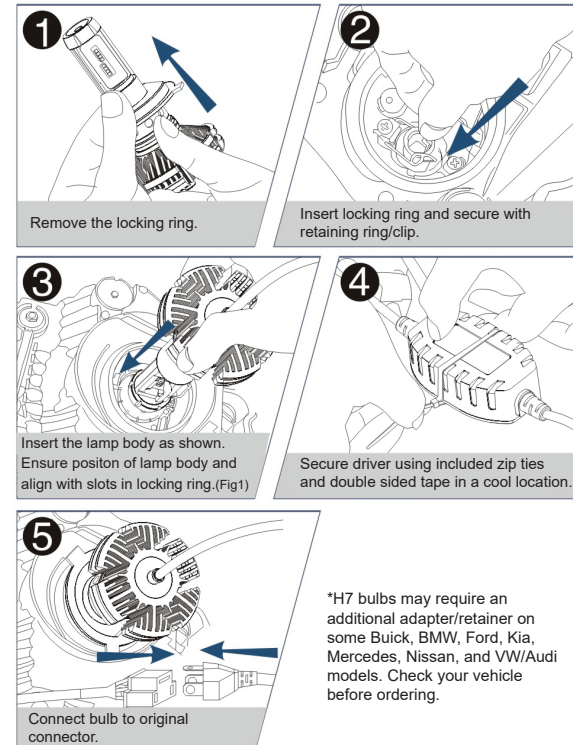
*Note: For 6500 K Natural White, glass tube not required.



866-590-3533 support@superbrightleds.com

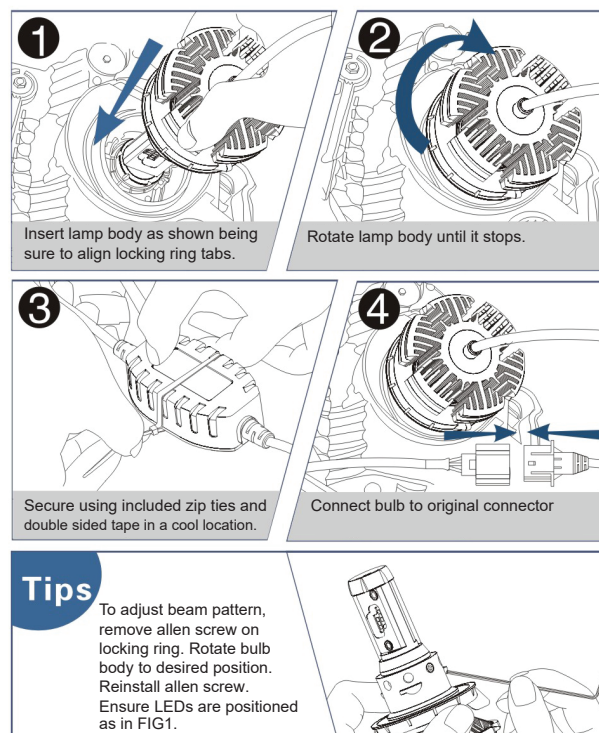
Installation Instructions H1 / H3 / H4 / H7* / 9004 / 9007

Remove existing headlight dust cover, retaining ring/clip and stock bulb.



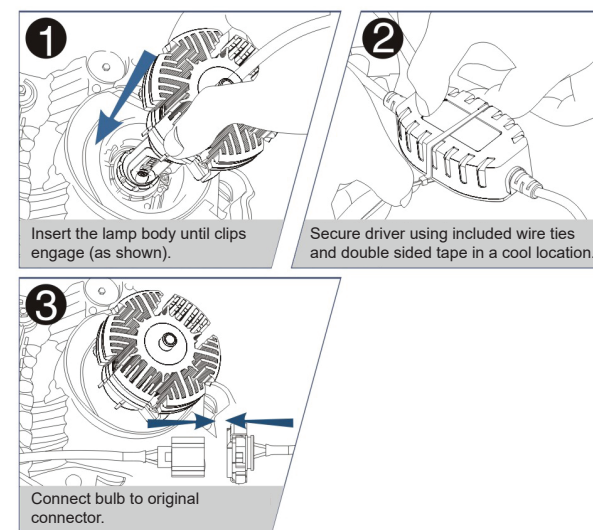
866-590-3533 support@superbrightleds.com

Installation Instructions H8 / H11 / H13 / P13W / 9005 / 9006 / 9012 / PSX26W / P13W / 880 / 881



866-590-3533 support@superbrightleds.com

Installation Instructions H16 / PSX24W



Specifications

| | |
|-----------------------|----------------------|
| Input Power | 25W |
| Operating Voltage | 9~32 VDC |
| Luminous Flux | 5000LM |
| IP Rating | IP 67 |
| Color Temperature | 3000K/ 6500K / 8000K |
| LED Lifetime | 30,000 Hours |
| Operating Temperature | -40°C ~+80°C |

866-590-3533 support@superbrightleds.com

Troubleshooting

| | |
|-------------------------------------|---|
| Light Won't Turn On | <ul style="list-style-type: none">• Check to make sure all wire connections are secure and fuses are functioning.• If only one side functions, swap bulbs to determine location of issue. |
| High Beam/ Low Beam are Opposite | <ul style="list-style-type: none">• Your vehicle may require a warning canceller to prevent this from happening. Visit www.superbrightleds.com for compatible warning cancellers |
| Flicker or "Bulb Out" error Message | <ul style="list-style-type: none">• Your vehicle may require a warning canceller to prevent this from happening. |

For questions, concerns, or for more installation tips visit

superbrightleds.com

866-590-3533 support@superbrightleds.com