



MainsFit (UL Type-B) T5

10T5HE/COR/34-850/MF14/G 25/1

The MainsFit (UL Type-B) lamps are designed to be the perfect retrofit solution to move from traditional fluorescent lamps to energy saving LEDs. This ballast bypass lamp has everything needed built into the lamp with proven energy savings, long life, surge suppression and industry leading safety features. All lamps in the MainsFit family are double-ended to help simplify the installation. In addition, all lamps meet the Philips standards for light quality so that end users will be in a comfortable environment regardless of the MainsFit lamp type.

Product data

General Information		Operating and Electrical	
Cap-Base	G5 [G5]	Line Frequency	50 to 60 Hz
Nominal lifetime	50,000 hour(s)	Input Frequency	50 to 60 Hz
Switching Cycle	50,000	Power Consumption	10 W
Lighting Technology	LED	Lamp Current (Max)	105 mA
EU RoHS compliant	Yes	Lamp Current (Min)	40 mA
Light Technical		Wattage Equivalent	21 W
Color Code	850 [CCT of 5000K]	Starting Time (Nom)	0.5 s
Beam Angle (Nom)	200 degree(s)	Warm-up time to 60% light	0.5 s
Luminous Flux	1,400 lumen	Power Factor (Fraction)	0.9
Color Designation	Daylight	Voltage (Nom)	120-277 V
Correlated Color Temperature (Nom)	5000 K	UL Type	UL Type B
Luminous Efficacy (rated) (Nom)	140.00 lm/W	Temperature	
Color Consistency	<5	Ambient temperature range	-4 °F to 113 °F
Color rendering index (CRI)	80	T-Case Maximum (Nom)	158 °F
LLMF At End Of Nominal Lifetime (Nom)	70 %		

MainsFit (UL Type-B) T5

Controls and Dimming

Dimmable	Limited
----------	---------

Mechanical and Housing

Bulb Finish	Frosted
Bulb Material	Glass
Product Length	35-7/16 inch
Bulb Shape	T5

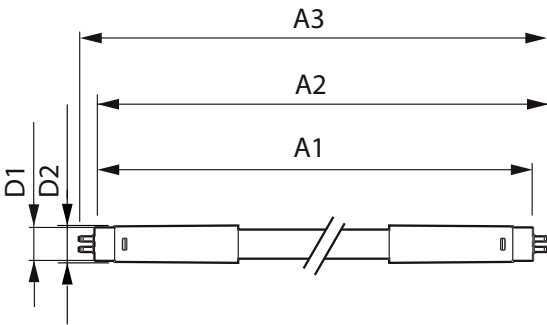
Approval and Application

Energy Saving Product	Yes
Approval Marks	RoHS compliance UL certificate

Product Data

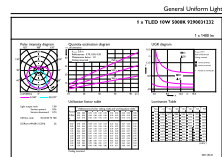
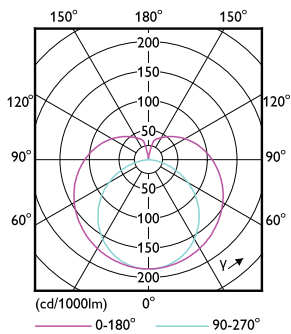
Order product name	10T5HE/COR/34-850/MF14/G 25/1
Order code	576199
Numerator - Quantity Per Pack	1
Numerator - Packs per outer box	25
Material Nr. (12NC)	929003123204
Full product name	10T5HE/COR/34-850/MF14/G 25/1
EAN/UPC - Case	50046677576191
EAN/UPC - Product/Case	046677576196

Dimensional drawing



Product	D1	D2	A1	A2	A3
10T5HE/COR/34-850/MF14/G 25/1	5/8 inch	3/4 inch	33-7/16 inch	33-11/16 inch	34 inch

Photometric data

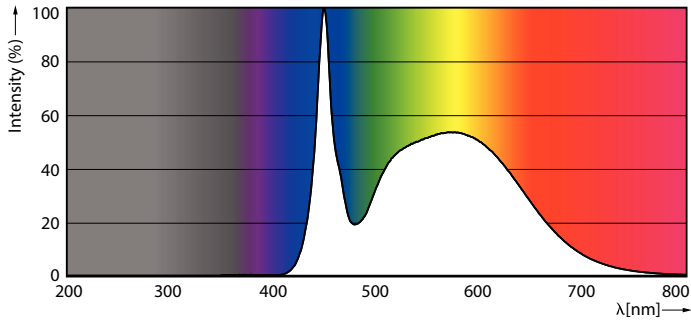


Light Distribution Diagram - 10T5HE/COR/34-850/MF14/G 25/1

General uniform lighting - 10T5HE/COR/34-850/MF14/G 25/1

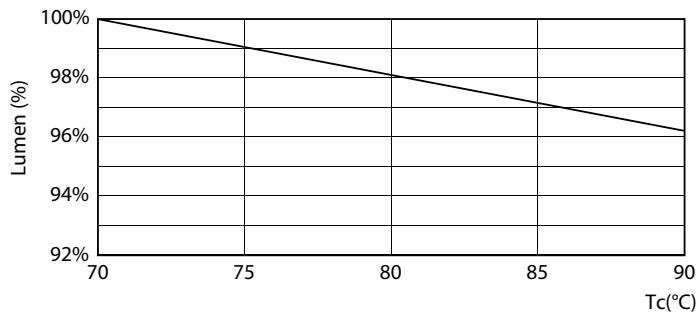
MainsFit (UL Type-B) T5

Photometric data

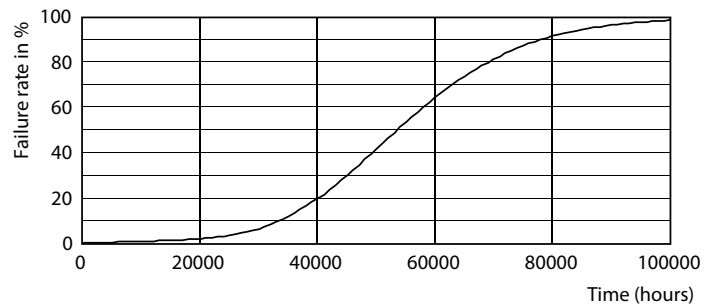


Spectral Power Distribution Colour - 10T5HE/COR/34-850/MF14/G 25/1

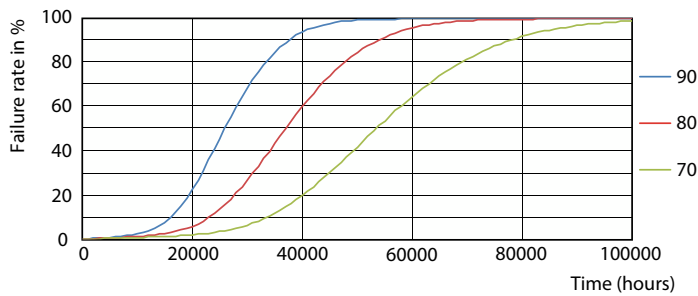
Lifetime



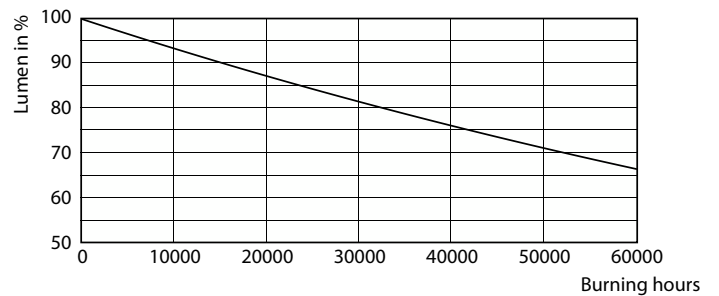
Lumen Maintenance Diagram - 10T5HE/COR/34-850/MF14/G 25/1



Life Expectancy Diagram - 10T5HE/COR/34-850/MF14/G 25/1



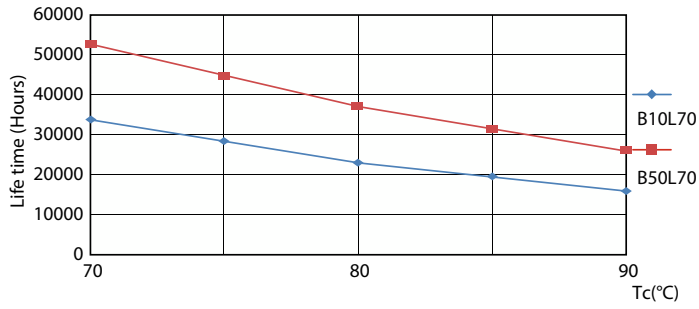
Life Expectancy Diagram - 10T5HE/COR/34-850/MF14/G 25/1



Lumen Maintenance Diagram - 10T5HE/COR/34-850/MF14/G 25/1

MainsFit (UL Type-B) T5

Lifetime



Life Expectancy Diagram - 10T5HE/COR/34-850/MF14/G 25/1

