

Features

- 24 VDC input - Longer continuous runs
- 90+ CRI - Accurate color rendering
- Available in 3000K, 4000K, or 5700K CCT
- IP20 environmental rating
- 28 mm (1.1 in.) strip width
- 3M™ adhesive backing
- LED lifetime of 60,000 hours (L70)
- Operating temperature: -4°-113° F (-20°-45° C)

Applications

Some common uses include lighting for retail displays, trade shows, exhibitions, museums, new construction, bias lighting, cove lighting, task lighting, and other indoor applications.

Available Models¹

5 meter length

- 4NFLS-WWH12160-24V
- 4NFLS-NWH12160-24V
- 4NFLS-CWH12160-24V

30 meter length

- 4NFLS-WWH12960-24V
- 4NFLS-NWH12960-24V
- 4NFLS-CWH12960-24V

Accessories

Power Supplies



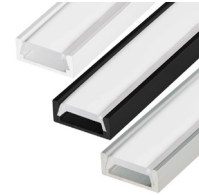
Strip Connectors



Controllers and Switches



Mounting Accessories



¹Contact customer service if interested in options other than those listed.

Specifications

Model 4NFLS-	WWH12x60-24V	NWH12x60-24V	CWH12x60-24V
Operating Voltage	24 VDC		
CCT	3000K	4000K	5700K
Brightness	1185 lm/ft		1317 lm/ft
Wattage per Foot	12 W/ft		13 W/ft
Current Draw	560 mA/ft	509 mA/ft	537 mA/ft
Efficacy	93 lm/W		
CRI	90+		
Beam Angle	120°		
Dimming Type	Pulse Width Modulation (PWM)		
LED Density	132 LEDs/ft		
Max Run (Class 2)	Up to 16.4 ft (5 m)		
Minimum Cut Length	56 mm (2.2 in.)		
Environmental Rating	IP20, suitable for dry locations		

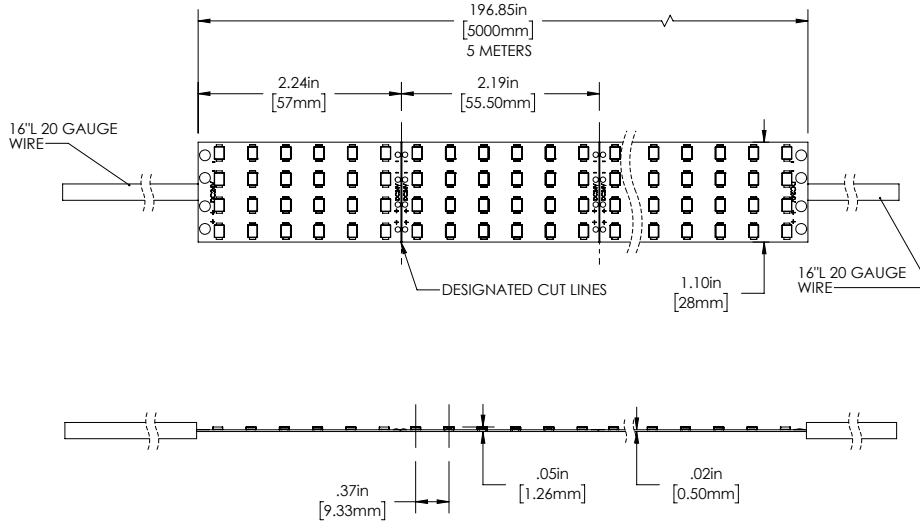


HighLight LED Strip Lights

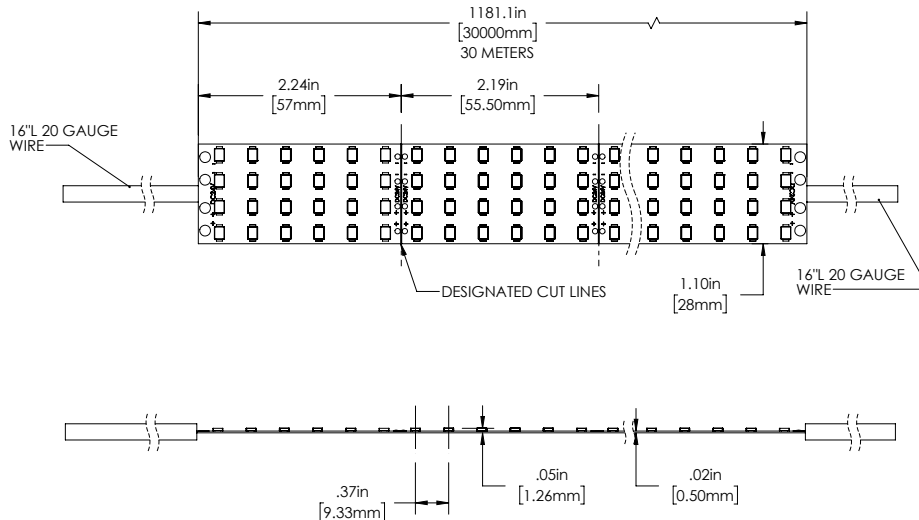
2835 Strip Specifications

Dimensional Drawings

HL-IP20-90CRI-5m-QuadRow

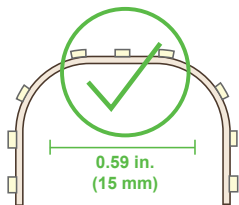


HL-IP20-90CRI-30m-QuadRow

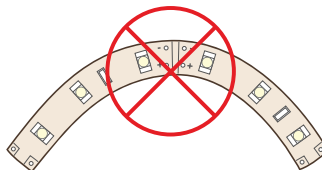
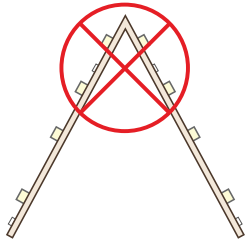


STRIP FLEXIBILITY

Bending strips at sharp angles will damage circuit traces and void warranty.



Bends less than 15mm will damage circuit traces and void warranty.



Bending strips on horizontal plane will damage circuit traces and void warranty.



Specifications are subject to change without notice.

T 866.811.5550

F 314.972.6202

email: commercial-sales@superbrightleds.com

www.superbrightleds.com/cat/led-strips-and-bars/

