

Light efficiency:



Output: 13342 lm

Light quality:



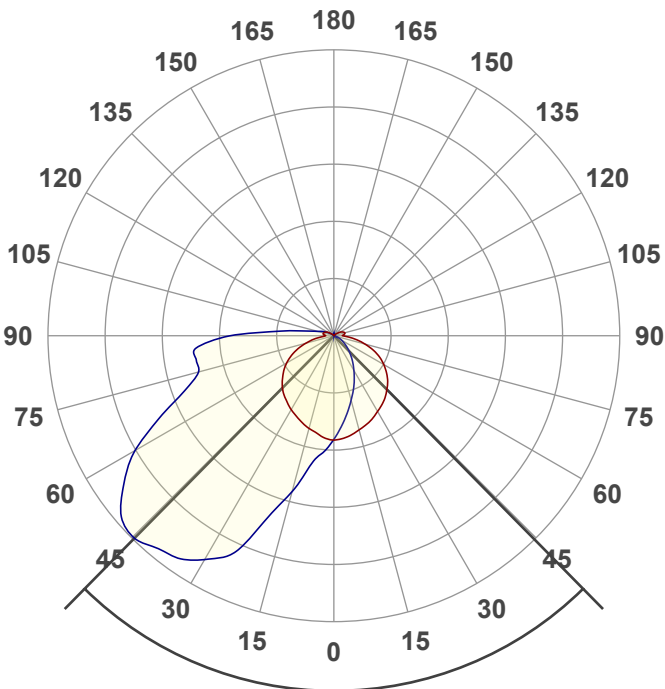
Peak: 5676 cd

Color temperature:



Power: 114.7 W

PF: 1.0



Product name:

WPLP-SW3B120-H-Y

Date and time:

7/28/2022 10:20:13 AM

Beam angle

89.1°

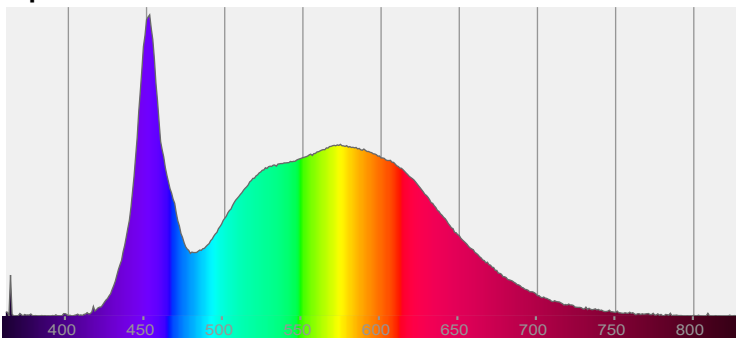


CIE 1931

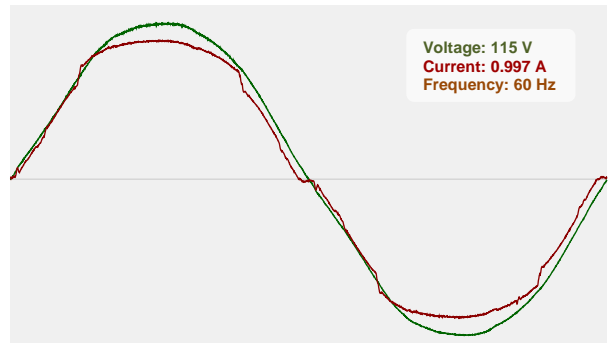
x: 0.345

y: 0.356

Spectra



Power



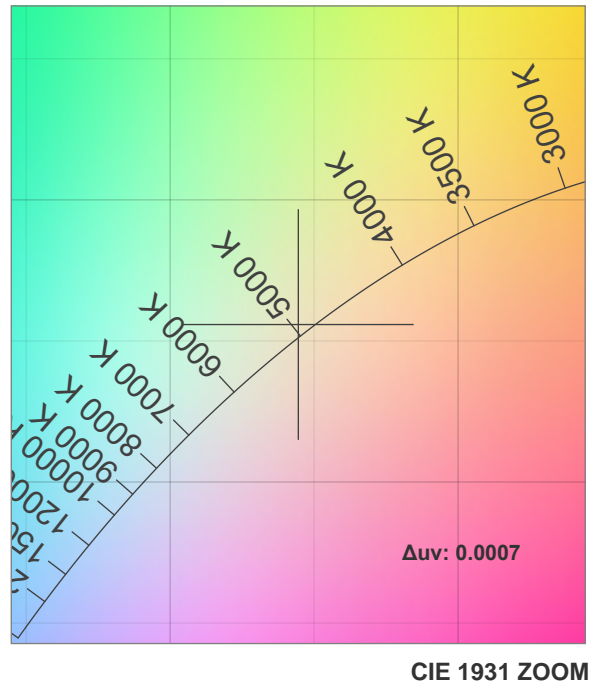
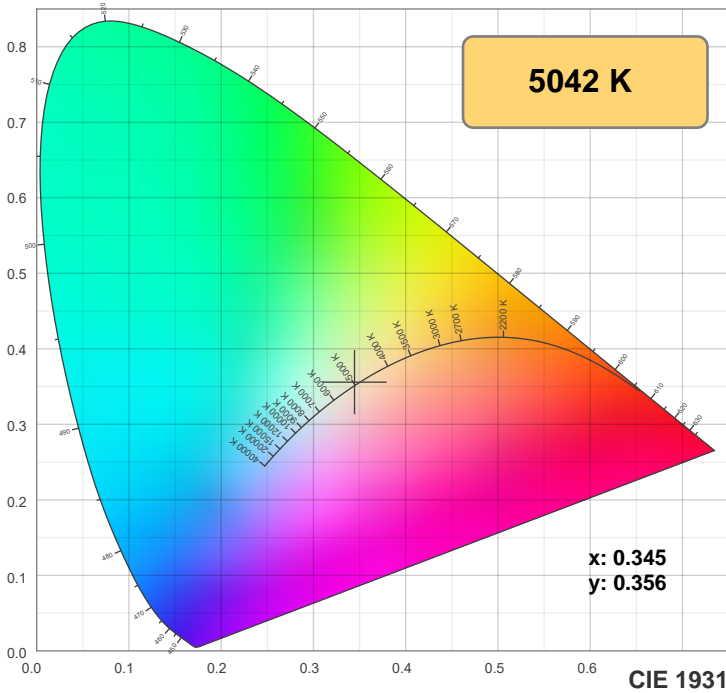
T 314.743.3067

F 314.972.6202

email: commercial-sales@superbrightleds.com

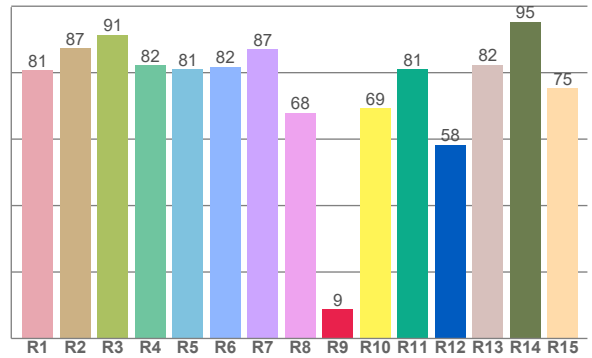
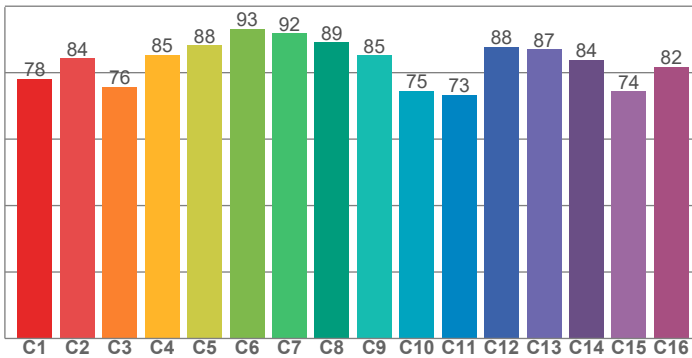
www.superbrightleds.com/

Color Specifications



TM30: 83.0

CRI: 82.4 (R1-R8)



CRI R values, only R1-R8 are used to calculate final CRI value

R1	R2	R3	R4	R5	R6	R7	R8	R9	R10	R11	R12	R13	R14	R15
80.7	87.3	91.4	82.3	81.0	81.8	87.1	68.0	8.9	69.3	81.1	58.3	82.4	95.4	75.3

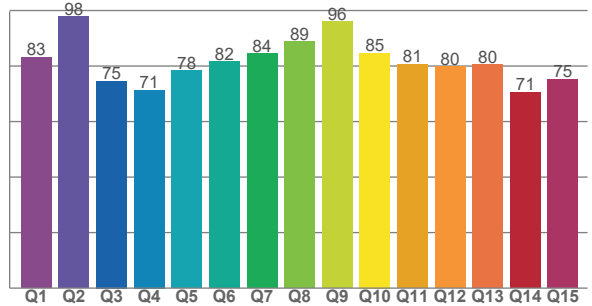
TM30 C values, 16 binned values out of total of 99 C values

C1	C2	C3	C4	C5	C6	C7	C8	C9	C10	C11	C12	C13	C14	C15	C16
78.2	84.4	75.8	85.3	88.3	93.2	91.8	89.2	85.2	74.6	73.3	87.8	87.0	83.8	74.4	81.7

CQS Q values

Q1	Q2	Q3	Q4	Q5	Q6	Q7	Q8	Q9	Q10	Q11	Q12	Q13	Q14	Q15
83.1	97.9	74.6	71.3	78.4	81.5	84.4	88.7	95.9	84.7	80.6	79.9	80.4	70.6	75.2

CQS: 80.3



Color parameters

Color temperature	Color rendering index	Red component	Color fidelity	Color gamut	Color quality scale	Color coordinate cie 1931	Color coordinate cie 1931	Color coordinate	Color coordinate	Color division from black body
CCT	CRI	CRI R9	TM30 Rf	TM30 Rg	CQS	x	y	u	v	Δuv
5042 K	82.4	8.9	83.0	96.2	80.3	0.345	0.356	0.209	0.324	0.0007

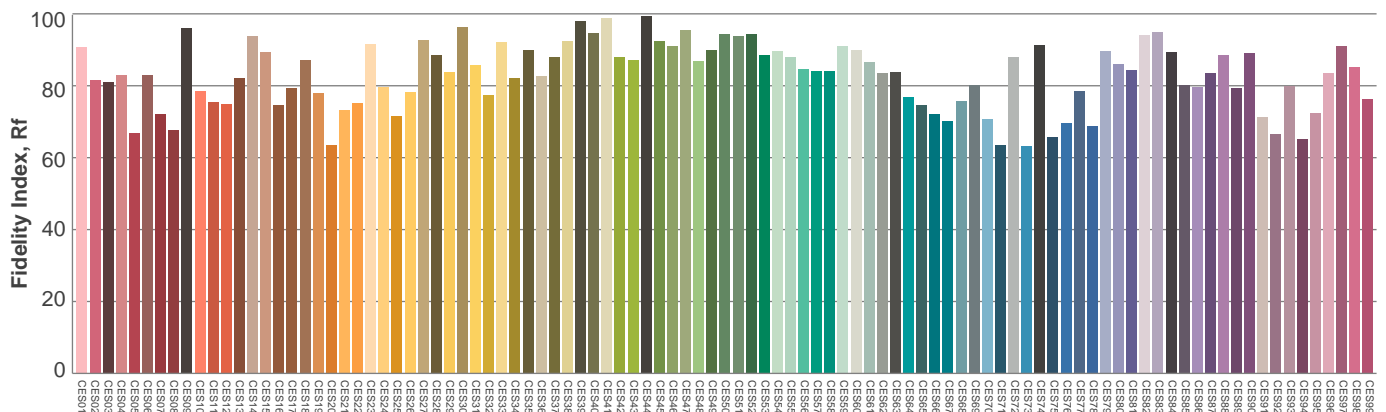
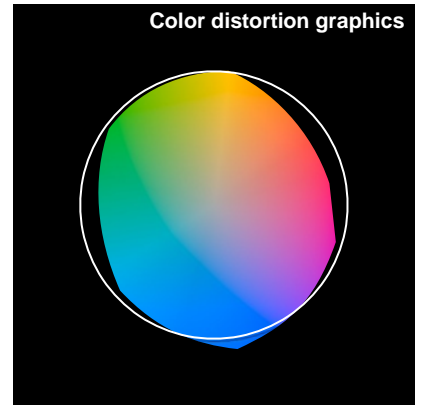
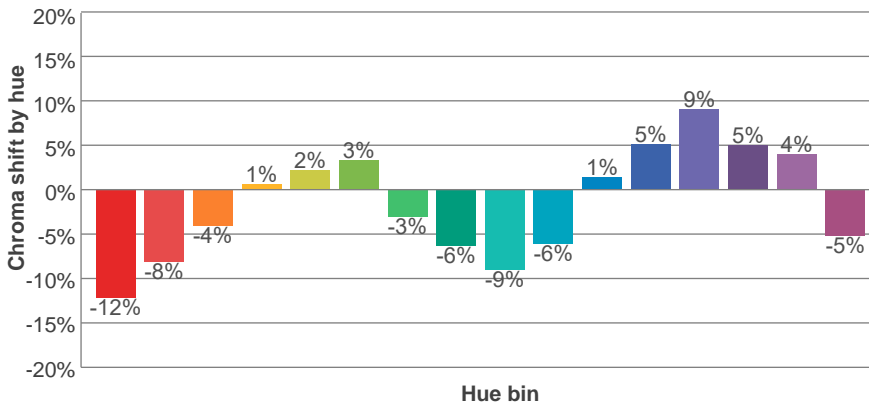
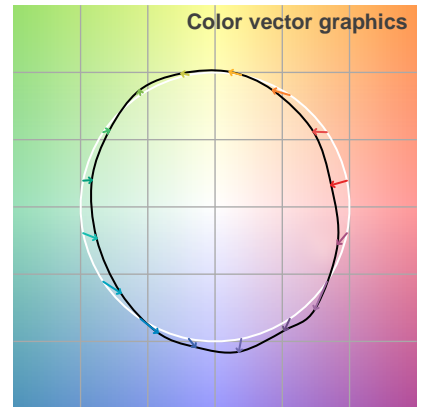
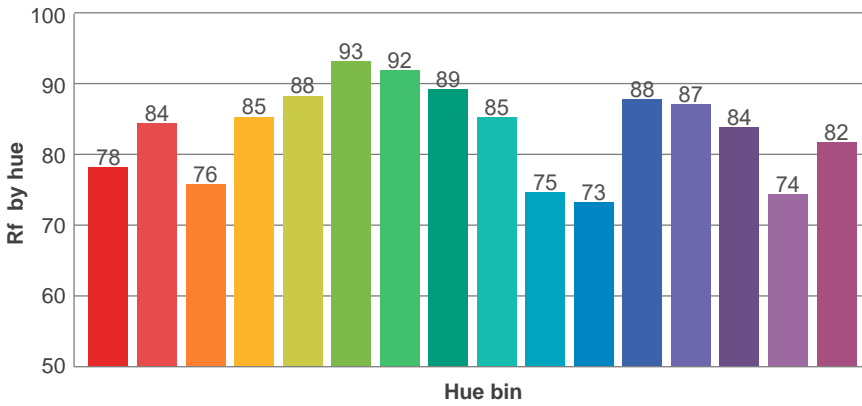
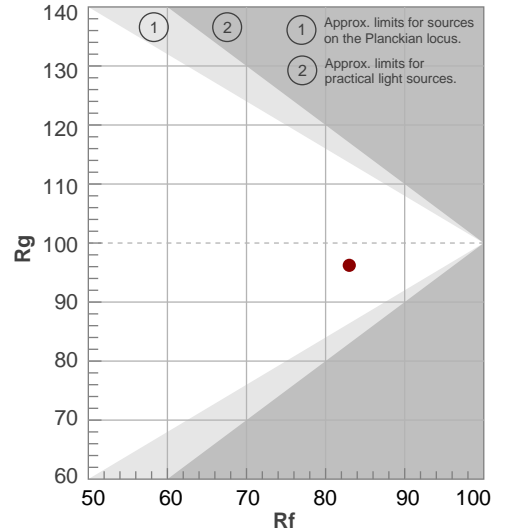


TM30 Report

Rf 83.0
Fidelity index Rf

Rg 96.2
Gammut index Rg

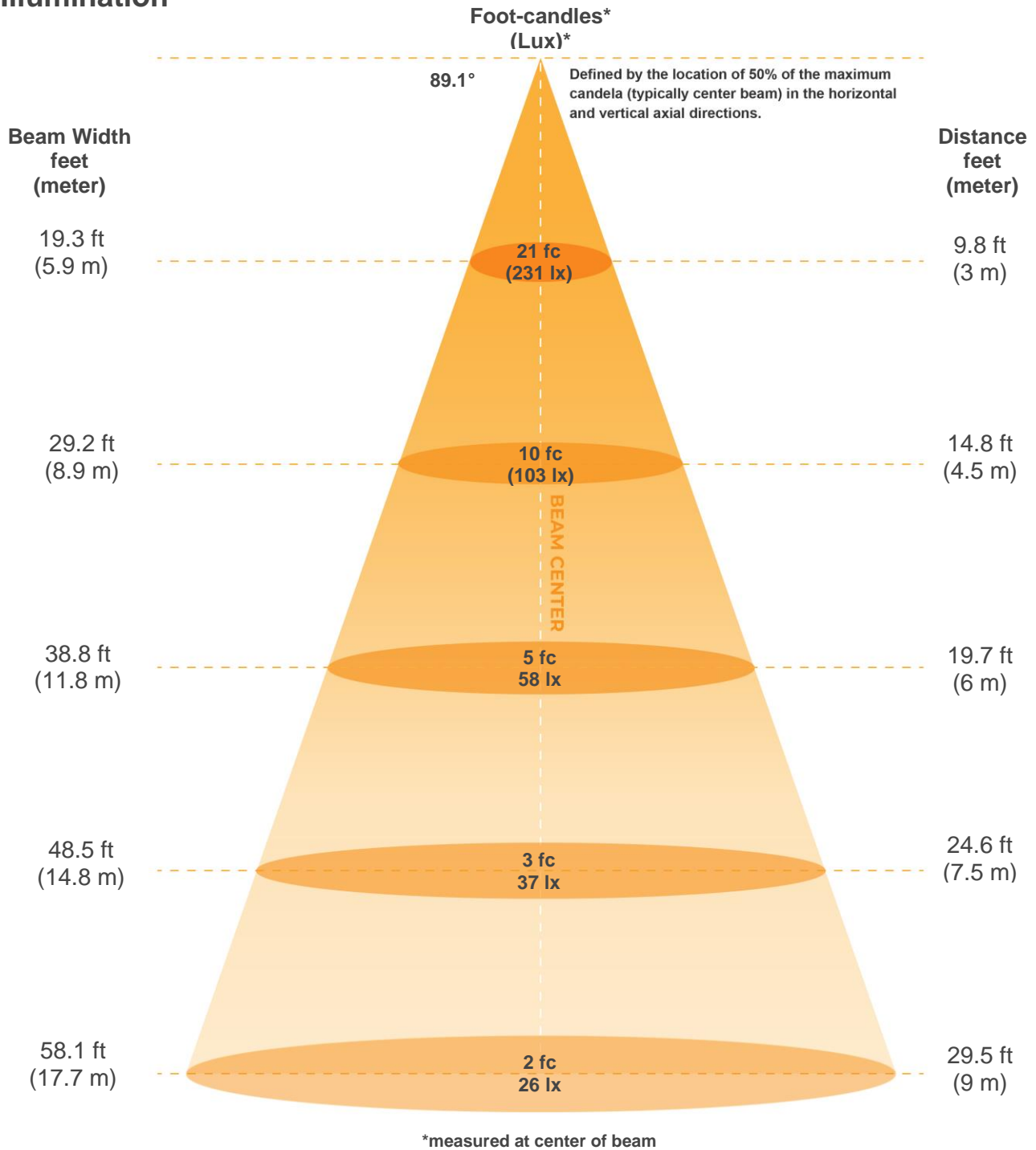
Hue Bin	R _f	Graphic shifts (%)	
		Chroma	Hue
1	78	-12%	-1%
2	84	-8%	6%
3	76	-4%	12%
4	85	1%	9%
5	88	2%	5%
6	93	3%	-1%
7	92	-3%	-4%
8	89	-6%	-2%
9	85	-9%	6%
10	75	-6%	14%
11	73	1%	16%
12	88	5%	6%
13	87	9%	-4%
14	84	5%	-8%
15	74	4%	-22%
16	82	-5%	-9%



Color Evaluation Sample



Illumination



Beam intensities from 1-20m

1m	2m	3m	4m	5m	6m	7m	8m	9m	10m	11m	12m	13m	14m	15m	16m	17m	18m	19m	20m
3.3ft	6.6ft	9.8ft	13.1ft	16.4ft	19.7ft	23ft	26.2ft	29.5ft	32.8ft	36.1ft	39.4ft	42.7ft	45.9ft	49.2ft	52.5ft	55.8ft	59.1ft	62.3ft	65.6ft
2077lx	519lx	231lx	130lx	83lx	58lx	42lx	32lx	26lx	21lx	17lx	14lx	12lx	11lx	9lx	8lx	7lx	6lx	6lx	5lx
192.9fc	48.2fcd	21.4fcd	12.1fcd	7.7fcd	5.4fcd	3.9fcd	3fcd	2.4fcd	1.9fcd	1.6fcd	1.3fcd	1.1fcd	1fcd	0.9fcd	0.8fcd	0.7fcd	0.6fcd	0.5fcd	0.5fcd

Beam angle 50%	Field angle 10%	Cutoff angle 2,5%	Intensity ratio in 120° cone	Intensity ratio in 90° cone
89.1°	169.1°	209.2°	53.9%	31.7%



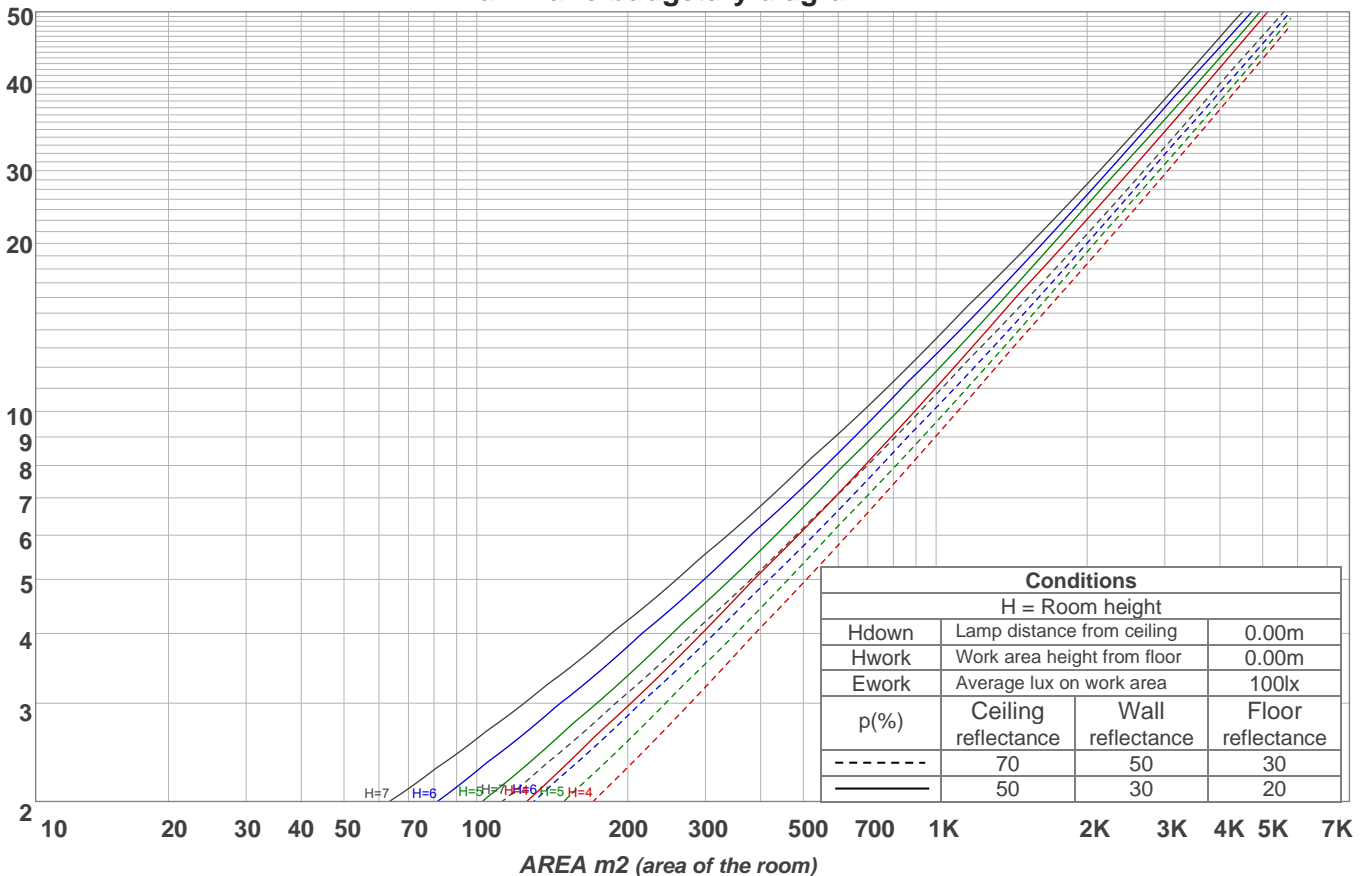
Light Planning

Coefficients of Utilization

Ceiling reflectance	80				70				50			30			10			0	
Wall reflectance	70	50	30	10	70	50	30	10	50	30	10	50	30	10	50	30	10	0	
Floor reflectance	20	20	20	20	20	20	20	20	20	20	20	20	20	20	20	20	20	20	0
RCR	(RCR: Room Cavity Ratio)																		
	Room Values are expressed as percentage of Lumens delivered to the task surface																		
0	117	117	117	117	113	113	113	113	106	106	106	100	100	100	94	94	94	91	
1	102	95	89	83	98	92	86	81	86	81	77	80	76	73	75	72	69	66	
2	90	80	71	64	87	77	69	62	72	65	59	67	61	57	63	58	54	51	
3	81	68	58	50	78	66	57	49	62	54	47	57	51	45	54	48	43	40	
4	74	59	49	41	70	57	48	40	54	45	39	50	43	37	47	41	36	33	
5	67	52	42	34	64	51	41	34	47	39	32	44	37	31	41	35	30	27	
6	61	46	36	29	59	45	36	29	42	34	28	40	32	27	37	31	26	23	
7	57	42	32	25	54	40	31	25	38	30	24	36	28	23	34	27	22	20	
8	52	38	28	22	50	37	28	22	34	27	21	32	25	20	31	24	20	17	
9	49	34	25	19	47	33	25	19	31	24	18	30	23	18	28	22	17	15	
10	46	31	23	17	44	31	22	17	29	22	17	27	21	16	26	20	16	14	

LAMPS (number of lamps)

Luminaire budgetary diagram



Zonal Lumen Summary

0°-10°	10°-20°	20°-30°	30°-40°	40°-50°	50°-60°	60°-70°	70°-80°	80°-90°
195 lm	588 lm	1048 lm	1515 lm	1846 lm	1998 lm	1897 lm	1688 lm	1390 lm
90°-100°	100°-110°	110°-120°	120°-130°	130°-140°	140°-150°	150°-160°	160°-170°	170°-180°
695 lm	274 lm	125 lm	46.8 lm	17.9 lm	8.76 lm	5.03 lm	3.06 lm	1.05 lm

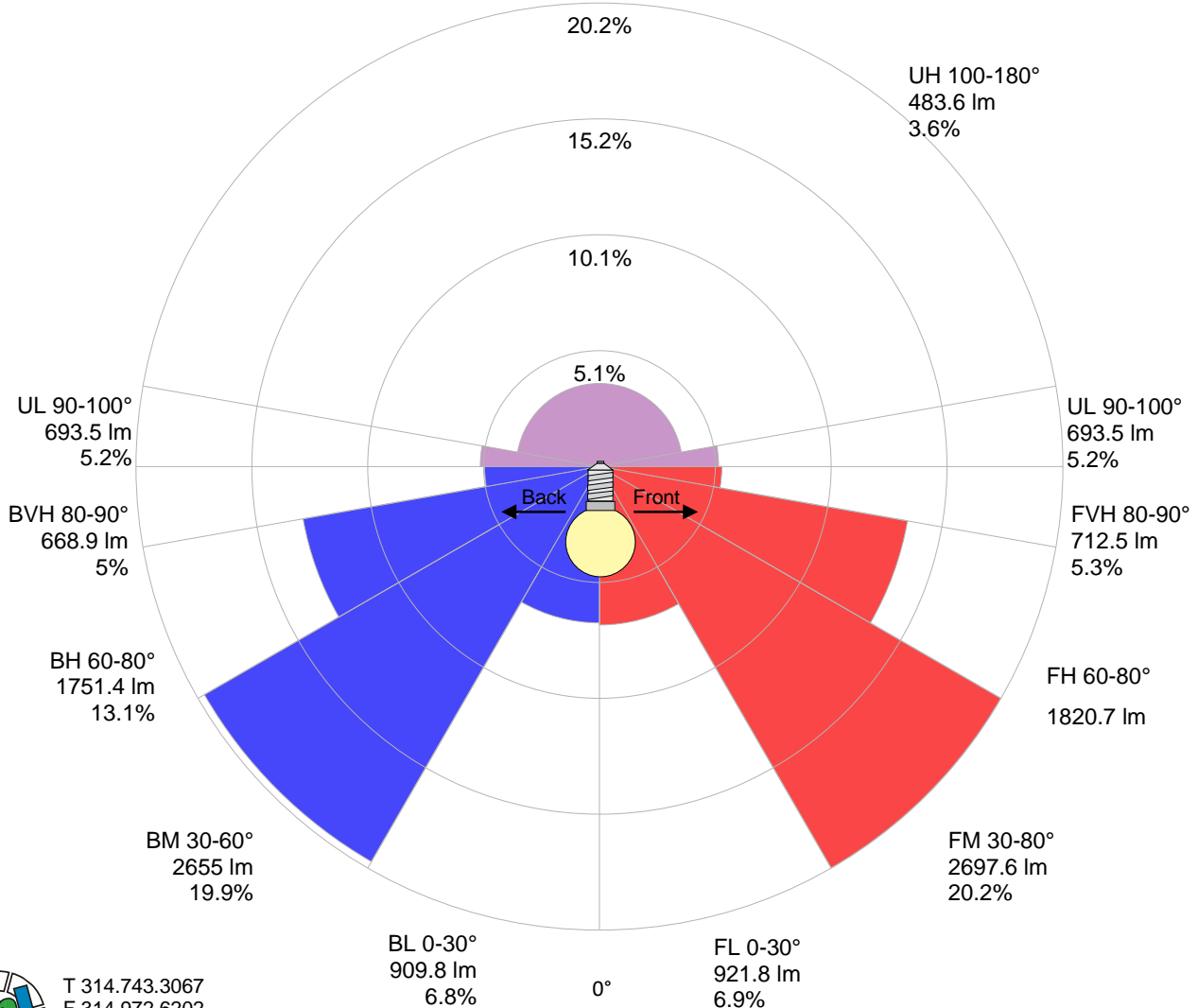


Road Report

LCS table

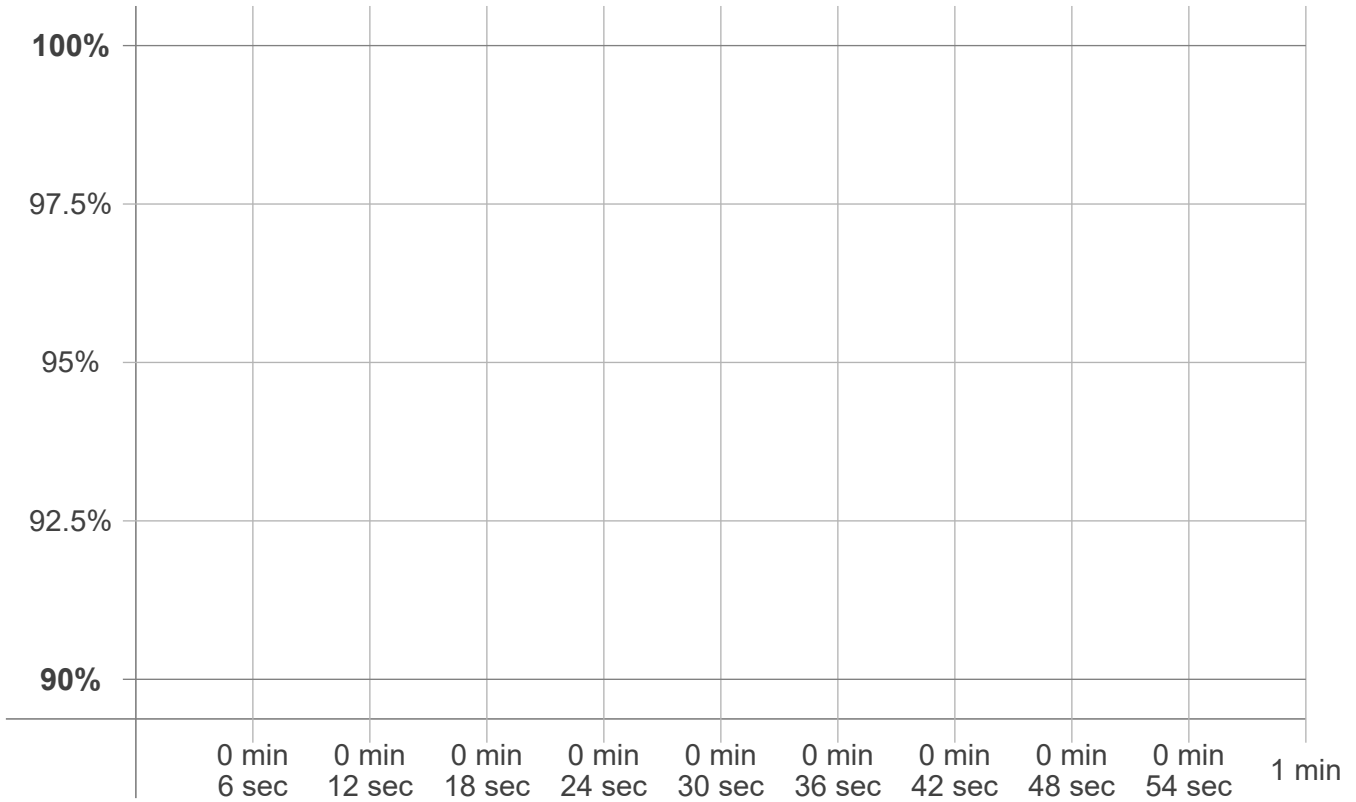
BUG rating:	B3 U4 G4	
Forward light	Lumens	Lumens %
Low(0-30):	921.8	6.9%
Medium(30-60):	2697.6	20.2%
High(60-80):	1820.7	13.6%
Very high(80-90):	712.5	5.3%
Back light		
Low(0-30):	909.8	6.8%
Medium(30-60):	2655	19.9%
High(60-80):	1751.4	13.1%
Very high(80-90):	668.9	5%
Uplight		
Low(90-100):	693.5	5.2%
High(100-180):	483.6	3.6%

LCS graph



Stabilization

Warmup curve



Warmup result

Warmup time:	n/a
Warmup variation	n/a%

Warmup conditions

Stable period:	n/a
Stable change max:	n/a%
Minimum time:	n/a

Color temperature change

CCT start	CCT change	CCT end
n/a K	n/a K	5042 K

Output change

Output start	Output change	Output end
n/a lm	n/a lm	13342 lm

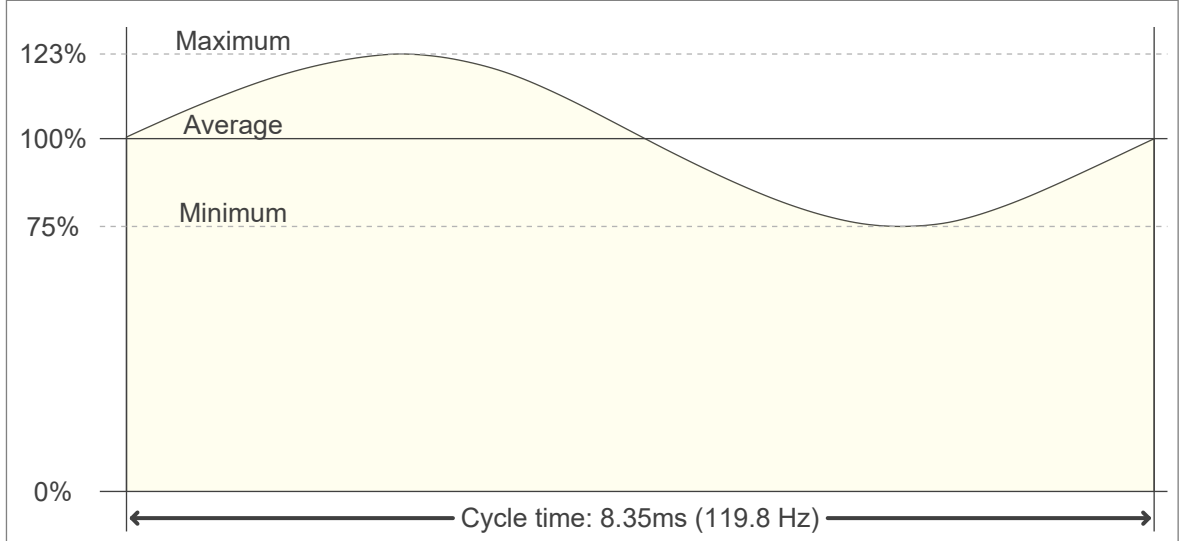


Flicker Specifications

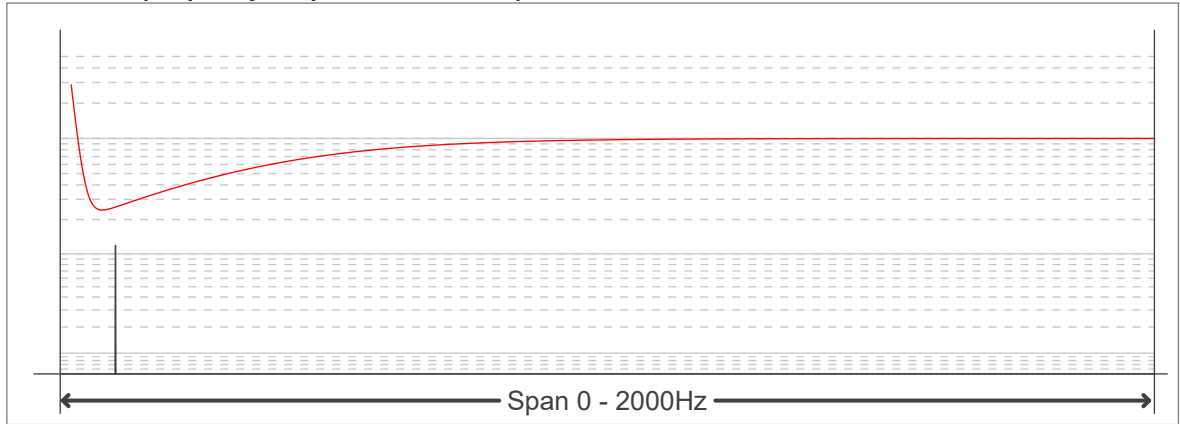
Flicker curve (complete sampled flicker signal)



Flicker frame (frame of one flicker period)



Flicker FFT (frequency scope of flicker curve)



Flicker results:

Flicker frequency:	119.76 Hz
Flicker index:	0.08
Flicker percentage:	24.65 %
SVM: (Visual flicker)	0.87

Flicker conditions:

Sample rate:	20000 samples/second
---------------------	-----------------------------

