

**Important: Read all instructions prior to installation.**

### RWLA Series

## LED Street Light



RWLA-xK120AT2-GRSF

### Safety and Notes

- Product should be installed and serviced by a certified electrician in accordance with applicable national, state, and local building and electrical codes.
- To reduce the risk of electric shock, ensure that the main power source and circuit breakers are switched off before performing any installation or wiring procedures.
- Avoid looking directly into lamp when illuminated.
- Ensure all mounts are securely attached and will support the weight of the fixture. Failure to properly support fixture may result in damage or injury, for which the manufacturer does not assume responsibility.

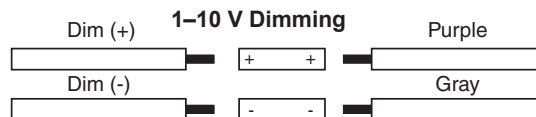
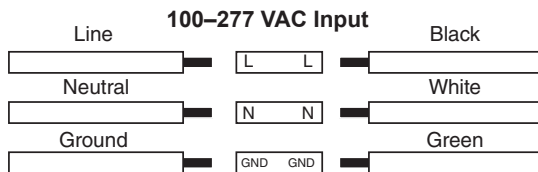
### Specifications

#### Environmental Specifications

Operating Temperature	-40°–122° F (-40°–50° C)
IP Rating	IP65

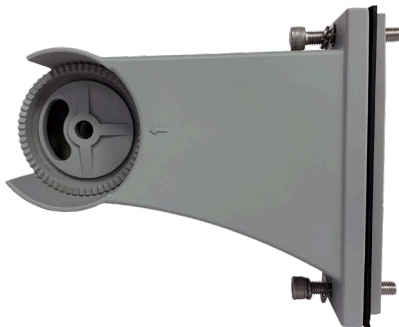
Check product label for specific electrical specifications related to installation.  
Improper installation will void warranty.

### Wiring Diagram

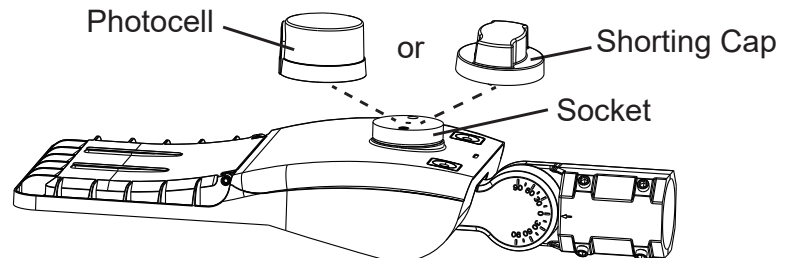


### Optional Mounts

Pole/Post Mount (RWLA-PM)



### Photocell/Shorting Cap Installation



Rev Date: V2.0 04/06/2021

4400 Earth City Expy, St. Louis, MO 63045

• 866-590-3533

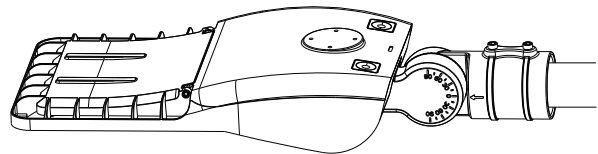
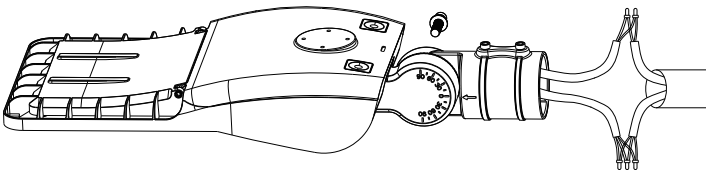
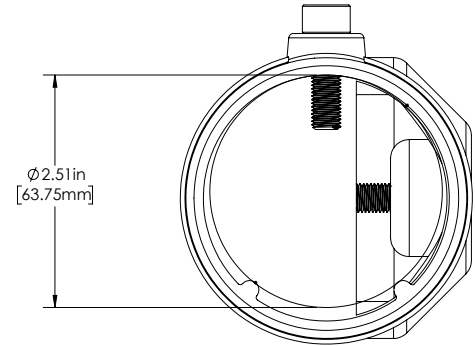
• [superbrightleds.com](http://superbrightleds.com)

**Important: Read all instructions prior to installation.**

## LED Street Light

### Round Adjustable Fitter Mount Installation

1. Remove the center bolt to separate mount from light fixture.
2. Run wiring through mount and reattach mount to light.
3. With supply power off, make all wiring connections.
4. Install photocell or shorting cap.
5. Attach mount to pole and tighten bolts to secure. Adjust angle by loosening center bolt, tighten once at desired angle.



### Pole/Post Knuckle Mount (RWLA-PM) Installation

1. Remove the center bolt to separate the slip-fitter mount from the light and set the mount aside.
2. Remove access panel from side of pole/post mount.
3. Run wiring through the pole/post mount and connect mount to light.
4. Make appropriate mounting and wiring holes in pole/post and attach mount to pole/post.
5. With supply power off, use the side access panel to connect wiring, then close access panel.
6. Install photocell or shorting cap.
7. Adjust angle of light by loosening center bolt, then tighten once at desired angle.

