

Important: Read all instructions prior to installation.

LED Flood Light

Safety and Notes

- Product should be installed and serviced in accordance with applicable national, state, and local building and electrical codes.
- To reduce the risk of electric shock, ensure that the main power source and circuit breakers are switched off before performing any installation or wiring procedures.
- Avoid looking directly into lamp when illuminated.
- Ensure all mounts are securely attached and will support the weight of the fixture. Failure to properly support fixture may result in damage or injury, for which the manufacturer does not assume responsibility.



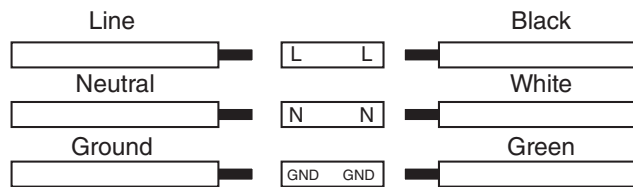
AFL-50K50-110-U

Specifications

Specifications	AFL-xK15-110-x	AFL-xK30-110-x	AFL-xK50-110-x	AFL-xK70-110-x	AFL-xK100-110-x
Operating Temperature	-40°–113° F (-40°–45° C)				
Environmental Rating	IP65				

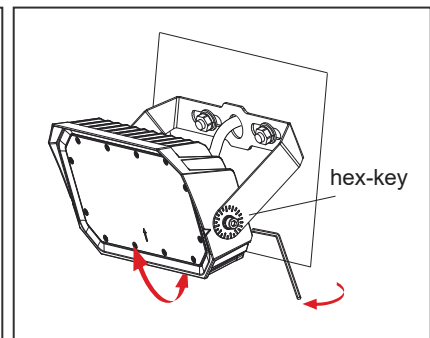
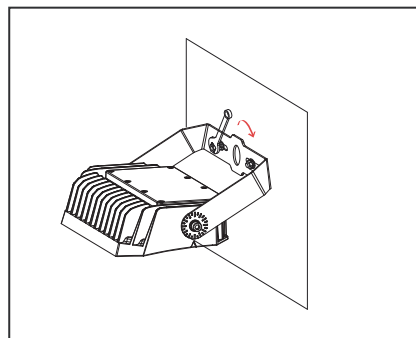
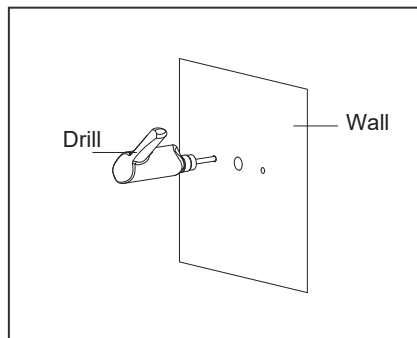
Check product label for specific electrical specifications related to installation.
Improper installation will void warranty.

Wiring Diagram



Installation Instructions (U-bracket/Yoke Mount)

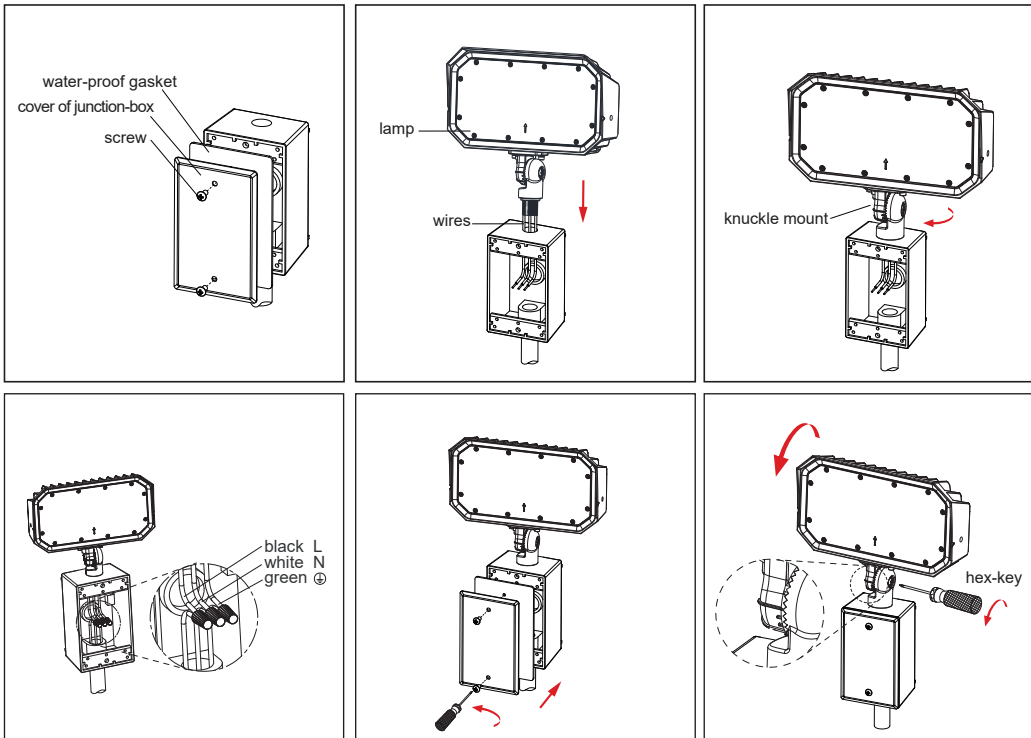
1. Drill holes for mounting and wiring.
2. Loosen light head adjustment screws with hex key.
3. Securely attach light to wall and connect wiring.
4. Rotate light head to desired angle and tighten adjustment screws.



Important: Read all instructions prior to installation.

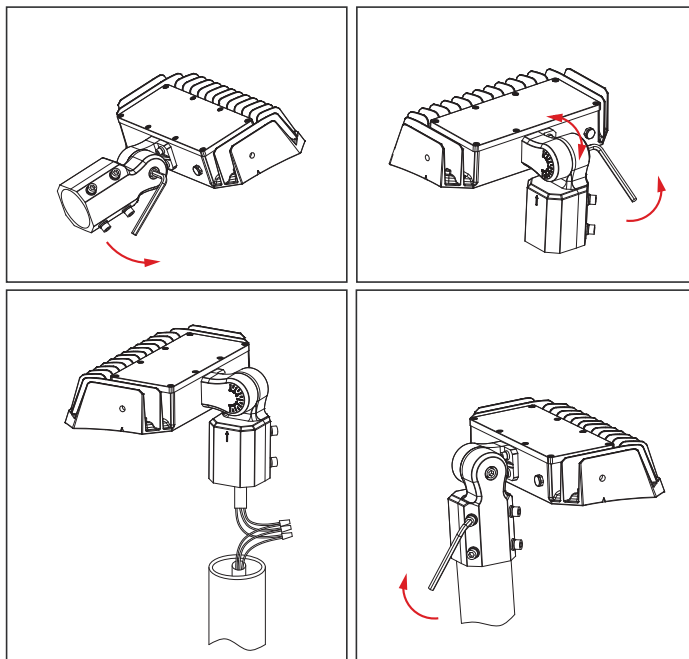
LED Flood Light

Installation Instructions (Knuckle Mount)



1. Open junction box and run wiring into box.
2. Securely mount light to junction box. Use sealant to create weatherproof seal.
3. Connect wiring.
4. Replace junction box cover.
5. Rotate light head to desired angle and tighten adjustment screws.

Installation Instructions (Slip-fitter)



Only available on 70 W and 100 W lights.

1. Loosen light head adjustment screw with hex key.
2. Connect wiring.
3. Securely attach light to pole/post. The maximum pole/post diameter is 2.375 in.
4. Rotate light head to desired angle and tighten adjustment screw.