

PHOTOMETRIC FILENAME : RLGR-SW5A9

DESCRIPTIVE INFORMATION (From Photometric File)

IESNA:LM-63-2002

[TEST] Viso LabSpion - serial: n/a sensor serial: n/a

[TESTLAB] Viso - serial: n/a sensor serial: n/a - Test lab

[MANUFAC] Super Bright LEDs, Inc.

[ISSUEDATE] 9/25/2025

[LUMINAIRE] RLGR-SW5A9

[LUMCAT] N/A

[_SERIALNUMBER] n/a - n/a

Measurement Conditions

Tested c-planes, qty	13
Tested gamma angles, qty	181

Tested Light Source

Luminaire	RLGR-SW5A9
Item No.	
Manufacturer	Super Bright LEDs, Inc.

Main Light Measurement Results

Luminaire lumens	658.4 lm
Total Lamp Lumens	635 lm
Downward Total Efficiency	98.8%
Total Luminaire Efficiency	103.7%
Luminaire Efficacy Rating (LER)	76.6 lm/W
Total Luminaire Watts	8.6 W
Basic Luminous Shape	SPOT
Luminous Length (0-180)	0.03 m
Luminous Width (90-270)	0 m
Luminous Height	0 m
Correlated Color Temperature, CCT	2700 K
Color Rendering Index, CRI	92.6

ZONAL LUMEN SUMMARY

Zone	Lumens	%Lamp	%Fixture	Lamp Lumens	Fixture Lumens
0-20	332.7	52.4 %	50.5 %	635.0	658.4
0-30	503.7	79.3 %	76.5 %		
0-40	588.5	92.7 %	89.4 %		
0-60	630.3	99.3 %	95.7 %		
0-80	648.2	102.1 %	98.4 %		
0-90	650.8	102.5 %	98.8 %		
10-90	537.8	84.7 %	81.7 %		
20-40	255.8	40.3 %	38.8 %		
20-50	282.4	44.5 %	42.9 %		
40-70	53.0	8.4 %	8.1 %		
60-80	17.9	2.8 %	2.7 %		
70-80	6.6	1.0 %	1.0 %		
80-90	2.6	0.4 %	0.4 %		
90-110	2.3	0.4 %	0.4 %		
90-120	3.2	0.5 %	0.5 %		
90-130	4.0	0.6 %	0.6 %		
90-150	5.7	0.9 %	0.9 %		
90-180	7.6	1.2 %	1.2 %		
110-180	5.3	0.8 %	0.8 %		
0-180	658.4	103.7 %	100.0 %		
Total Luminaire Efficiency =			103.7 %		

Zone	Lumens
0-10	113.0
10-20	219.7
20-30	171.0
30-40	84.8
40-50	26.6
50-60	15.2
60-70	11.3
70-80	6.6
80-90	2.6
90-100	1.3
100-110	1.1
110-120	0.9
120-130	0.8
130-140	0.8
140-150	0.9
150-160	0.9
160-170	0.7
170-180	0.3

IES INDOOR REPORT

Light measurement results

Print date 9/25/2025

Gamma	C0	C10	C20	C30	C40	C50	C60	C70	C80
180	3.17	3.17	3.17	3.17	3.17	3.17	3.17	3.17	3.17
177.5	3.17	3.17	3.17	3.17	3.17	3.17	3.17	3.17	3.17
175	3.09	3.09	3.09	3.09	3.09	3.09	3.09	3.09	3.09
172.5	3.17	3.17	3.17	3.17	3.17	3.17	3.17	3.17	3.17
170	2.90	2.90	2.90	2.90	2.90	2.90	2.90	2.90	2.90
167.5	3.17	3.17	3.17	3.17	3.17	3.17	3.17	3.17	3.17
165	2.59	2.59	2.59	2.59	2.59	2.59	2.59	2.59	2.59
162.5	3.17	3.17	3.17	3.17	3.17	3.17	3.17	3.17	3.17
160	2.38	2.38	2.38	2.38	2.38	2.38	2.38	2.38	2.38
157.5	3.17	3.17	3.17	3.17	3.17	3.17	3.17	3.17	3.17
155	2.00	2.00	2.00	2.00	2.00	2.00	2.00	2.00	2.00
152.5	3.17	3.17	3.17	3.17	3.17	3.17	3.17	3.17	3.17
150	1.65	1.65	1.65	1.65	1.65	1.65	1.65	1.65	1.65
147.5	3.17	3.17	3.17	3.17	3.17	3.17	3.17	3.17	3.17
145	1.36	1.36	1.36	1.36	1.36	1.36	1.36	1.36	1.36
142.5	3.17	3.17	3.17	3.17	3.17	3.17	3.17	3.17	3.17
140	1.15	1.15	1.15	1.15	1.15	1.15	1.15	1.15	1.15
137.5	3.17	3.17	3.17	3.17	3.17	3.17	3.17	3.17	3.17
135	0.998	0.998	0.998	0.998	0.998	0.998	0.998	0.998	0.998
132.5	3.17	3.17	3.17	3.17	3.17	3.17	3.17	3.17	3.17
130	0.923	0.923	0.923	0.923	0.923	0.923	0.923	0.923	0.923
127.5	3.17	3.17	3.17	3.17	3.17	3.17	3.17	3.17	3.17
125	0.877	0.877	0.877	0.877	0.877	0.877	0.877	0.877	0.877
122.5	3.17	3.17	3.17	3.17	3.17	3.17	3.17	3.17	3.17
120	0.900	0.900	0.900	0.900	0.900	0.900	0.900	0.900	0.900
117.5	3.17	3.17	3.17	3.17	3.17	3.17	3.17	3.17	3.17
115	0.907	0.907	0.907	0.907	0.907	0.907	0.907	0.907	0.907
112.5	3.17	3.17	3.17	3.17	3.17	3.17	3.17	3.17	3.17
110	0.947	0.947	0.947	0.947	0.947	0.947	0.947	0.947	0.947
107.5	3.17	3.17	3.17	3.17	3.17	3.17	3.17	3.17	3.17
105	0.993	0.993	0.993	0.993	0.993	0.993	0.993	0.993	0.993
102.5	3.17	3.17	3.17	3.17	3.17	3.17	3.17	3.17	3.17
100	1.07	1.07	1.07	1.07	1.07	1.07	1.07	1.07	1.07
97.5	3.17	3.17	3.17	3.17	3.17	3.17	3.17	3.17	3.17
95	1.15	1.15	1.15	1.15	1.15	1.15	1.15	1.15	1.15
92.5	3.17	3.17	3.17	3.17	3.17	3.17	3.17	3.17	3.17
90	1.30	1.30	1.30	1.30	1.30	1.30	1.30	1.30	1.30
87.5	3.17	3.17	3.17	3.17	3.17	3.17	3.17	3.17	3.17
85	2.30	2.30	2.30	2.30	2.30	2.30	2.30	2.30	2.30
82.5	3.17	3.17	3.17	3.17	3.17	3.17	3.17	3.17	3.17
80	4.01	4.01	4.01	4.01	4.01	4.01	4.01	4.01	4.01
77.5	3.17	3.17	3.17	3.17	3.17	3.17	3.17	3.17	3.17
75	6.26	6.26	6.26	6.26	6.26	6.26	6.26	6.26	6.26
72.5	3.17	3.17	3.17	3.17	3.17	3.17	3.17	3.17	3.17
70	8.75	8.75	8.75	8.75	8.75	8.75	8.75	8.75	8.75
67.5	3.17	3.17	3.17	3.17	3.17	3.17	3.17	3.17	3.17
65	11.3	11.3	11.3	11.3	11.3	11.3	11.3	11.3	11.3
62.5	3.17	3.17	3.17	3.17	3.17	3.17	3.17	3.17	3.17
60	14.3	14.3	14.3	14.3	14.3	14.3	14.3	14.3	14.3
57.5	3.17	3.17	3.17	3.17	3.17	3.17	3.17	3.17	3.17
55	16.9	16.9	16.9	16.9	16.9	16.9	16.9	16.9	16.9
52.5	3.17	3.17	3.17	3.17	3.17	3.17	3.17	3.17	3.17
50	20.0	20.0	20.0	20.0	20.0	20.0	20.0	20.0	20.0
47.5	3.17	3.17	3.17	3.17	3.17	3.17	3.17	3.17	3.17
45	29.4	29.4	29.4	29.4	29.4	29.4	29.4	29.4	29.4
42.5	3.17	3.17	3.17	3.17	3.17	3.17	3.17	3.17	3.17
40	68.6	68.6	68.6	68.6	68.6	68.6	68.6	68.6	68.6
37.5	3.17	3.17	3.17	3.17	3.17	3.17	3.17	3.17	3.17
35	120	120	120	120	120	120	120	120	120
32.5	3.17	3.17	3.17	3.17	3.17	3.17	3.17	3.17	3.17
30	251	251	251	251	251	251	251	251	251
27.5	3.17	3.17	3.17	3.17	3.17	3.17	3.17	3.17	3.17
25	368	368	368	368	368	368	368	368	368
22.5	3.17	3.17	3.17	3.17	3.17	3.17	3.17	3.17	3.17
20	544	544	544	544	544	544	544	544	544
17.5	3.09	3.09	3.09	3.09	3.09	3.09	3.09	3.09	3.09
15	804	804	804	804	804	804	804	804	804
12.5	0.877	0.877	0.877	0.877	0.877	0.877	0.877	0.877	0.877
10	1068	1068	1068	1068	1068	1068	1068	1068	1068
7.5	6.26	6.26	6.26	6.26	6.26	6.26	6.26	6.26	6.26
5	1244	1244	1244	1244	1244	1244	1244	1244	1244
2.5	368	368	368	368	368	368	368	368	368
0	1300	1300	1300	1300	1300	1300	1300	1300	1300

IES INDOOR REPORT

Light measurement results

Print date 9/25/2025

Gamma	C90	C100	C110	C120	C130	C140	C150	C160	C170
180	3.17	3.17	3.17	3.17	3.17	3.17	3.17	3.17	3.17
177.5	3.17	3.17	3.17	3.17	3.17	3.17	3.17	3.17	3.17
175	3.09	3.09	3.09	3.09	3.09	3.09	3.09	3.09	3.09
172.5	3.17	3.17	3.17	3.17	3.17	3.17	3.17	3.17	3.17
170	2.90	2.90	2.90	2.90	2.90	2.90	2.90	2.90	2.90
167.5	3.17	3.17	3.17	3.17	3.17	3.17	3.17	3.17	3.17
165	2.59	2.59	2.59	2.59	2.59	2.59	2.59	2.59	2.59
162.5	3.17	3.17	3.17	3.17	3.17	3.17	3.17	3.17	3.17
160	2.38	2.38	2.38	2.38	2.38	2.38	2.38	2.38	2.38
157.5	3.17	3.17	3.17	3.17	3.17	3.17	3.17	3.17	3.17
155	2.00	2.00	2.00	2.00	2.00	2.00	2.00	2.00	2.00
152.5	3.17	3.17	3.17	3.17	3.17	3.17	3.17	3.17	3.17
150	1.65	1.65	1.65	1.65	1.65	1.65	1.65	1.65	1.65
147.5	3.17	3.17	3.17	3.17	3.17	3.17	3.17	3.17	3.17
145	1.36	1.36	1.36	1.36	1.36	1.36	1.36	1.36	1.36
142.5	3.17	3.17	3.17	3.17	3.17	3.17	3.17	3.17	3.17
140	1.15	1.15	1.15	1.15	1.15	1.15	1.15	1.15	1.15
137.5	3.17	3.17	3.17	3.17	3.17	3.17	3.17	3.17	3.17
135	0.998	0.998	0.998	0.998	0.998	0.998	0.998	0.998	0.998
132.5	3.17	3.17	3.17	3.17	3.17	3.17	3.17	3.17	3.17
130	0.923	0.923	0.923	0.923	0.923	0.923	0.923	0.923	0.923
127.5	3.17	3.17	3.17	3.17	3.17	3.17	3.17	3.17	3.17
125	0.877	0.877	0.877	0.877	0.877	0.877	0.877	0.877	0.877
122.5	3.17	3.17	3.17	3.17	3.17	3.17	3.17	3.17	3.17
120	0.900	0.900	0.900	0.900	0.900	0.900	0.900	0.900	0.900
117.5	3.17	3.17	3.17	3.17	3.17	3.17	3.17	3.17	3.17
115	0.907	0.907	0.907	0.907	0.907	0.907	0.907	0.907	0.907
112.5	3.17	3.17	3.17	3.17	3.17	3.17	3.17	3.17	3.17
110	0.947	0.947	0.947	0.947	0.947	0.947	0.947	0.947	0.947
107.5	3.17	3.17	3.17	3.17	3.17	3.17	3.17	3.17	3.17
105	0.993	0.993	0.993	0.993	0.993	0.993	0.993	0.993	0.993
102.5	3.17	3.17	3.17	3.17	3.17	3.17	3.17	3.17	3.17
100	1.07	1.07	1.07	1.07	1.07	1.07	1.07	1.07	1.07
97.5	3.17	3.17	3.17	3.17	3.17	3.17	3.17	3.17	3.17
95	1.15	1.15	1.15	1.15	1.15	1.15	1.15	1.15	1.15
92.5	3.17	3.17	3.17	3.17	3.17	3.17	3.17	3.17	3.17
90	1.30	1.30	1.30	1.30	1.30	1.30	1.30	1.30	1.30
87.5	3.17	3.17	3.17	3.17	3.17	3.17	3.17	3.17	3.17
85	2.30	2.30	2.30	2.30	2.30	2.30	2.30	2.30	2.30
82.5	3.17	3.17	3.17	3.17	3.17	3.17	3.17	3.17	3.17
80	4.01	4.01	4.01	4.01	4.01	4.01	4.01	4.01	4.01
77.5	3.17	3.17	3.17	3.17	3.17	3.17	3.17	3.17	3.17
75	6.26	6.26	6.26	6.26	6.26	6.26	6.26	6.26	6.26
72.5	3.17	3.17	3.17	3.17	3.17	3.17	3.17	3.17	3.17
70	8.75	8.75	8.75	8.75	8.75	8.75	8.75	8.75	8.75
67.5	3.17	3.17	3.17	3.17	3.17	3.17	3.17	3.17	3.17
65	11.3	11.3	11.3	11.3	11.3	11.3	11.3	11.3	11.3
62.5	3.17	3.17	3.17	3.17	3.17	3.17	3.17	3.17	3.17
60	14.3	14.3	14.3	14.3	14.3	14.3	14.3	14.3	14.3
57.5	3.17	3.17	3.17	3.17	3.17	3.17	3.17	3.17	3.17
55	16.9	16.9	16.9	16.9	16.9	16.9	16.9	16.9	16.9
52.5	3.17	3.17	3.17	3.17	3.17	3.17	3.17	3.17	3.17
50	20.0	20.0	20.0	20.0	20.0	20.0	20.0	20.0	20.0
47.5	3.17	3.17	3.17	3.17	3.17	3.17	3.17	3.17	3.17
45	29.4	29.4	29.4	29.4	29.4	29.4	29.4	29.4	29.4
42.5	3.17	3.17	3.17	3.17	3.17	3.17	3.17	3.17	3.17
40	68.6	68.6	68.6	68.6	68.6	68.6	68.6	68.6	68.6
37.5	3.17	3.17	3.17	3.17	3.17	3.17	3.17	3.17	3.17
35	120	120	120	120	120	120	120	120	120
32.5	3.17	3.17	3.17	3.17	3.17	3.17	3.17	3.17	3.17
30	251	251	251	251	251	251	251	251	251
27.5	3.17	3.17	3.17	3.17	3.17	3.17	3.17	3.17	3.17
25	368	368	368	368	368	368	368	368	368
22.5	3.17	3.17	3.17	3.17	3.17	3.17	3.17	3.17	3.17
20	544	544	544	544	544	544	544	544	544
17.5	3.09	3.09	3.09	3.09	3.09	3.09	3.09	3.09	3.09
15	804	804	804	804	804	804	804	804	804
12.5	0.877	0.877	0.877	0.877	0.877	0.877	0.877	0.877	0.877
10	1068	1068	1068	1068	1068	1068	1068	1068	1068
7.5	6.26	6.26	6.26	6.26	6.26	6.26	6.26	6.26	6.26
5	1244	1244	1244	1244	1244	1244	1244	1244	1244
2.5	368	368	368	368	368	368	368	368	368
0	1300	1300	1300	1300	1300	1300	1300	1300	1300

IES INDOOR REPORT

Light measurement results

Print date 9/25/2025

Gamma	C180	C190	C200	C210	C220	C230	C240	C250	C260
180	3.17	3.17	3.17	3.17	3.17	3.17	3.17	3.17	3.17
177.5	3.17	3.17	3.17	3.17	3.17	3.17	3.17	3.17	3.17
175	3.09	3.09	3.09	3.09	3.09	3.09	3.09	3.09	3.09
172.5	3.17	3.17	3.17	3.17	3.17	3.17	3.17	3.17	3.17
170	2.90	2.90	2.90	2.90	2.90	2.90	2.90	2.90	2.90
167.5	3.17	3.17	3.17	3.17	3.17	3.17	3.17	3.17	3.17
165	2.59	2.59	2.59	2.59	2.59	2.59	2.59	2.59	2.59
162.5	3.17	3.17	3.17	3.17	3.17	3.17	3.17	3.17	3.17
160	2.38	2.38	2.38	2.38	2.38	2.38	2.38	2.38	2.38
157.5	3.17	3.17	3.17	3.17	3.17	3.17	3.17	3.17	3.17
155	2.00	2.00	2.00	2.00	2.00	2.00	2.00	2.00	2.00
152.5	3.17	3.17	3.17	3.17	3.17	3.17	3.17	3.17	3.17
150	1.65	1.65	1.65	1.65	1.65	1.65	1.65	1.65	1.65
147.5	3.17	3.17	3.17	3.17	3.17	3.17	3.17	3.17	3.17
145	1.36	1.36	1.36	1.36	1.36	1.36	1.36	1.36	1.36
142.5	3.17	3.17	3.17	3.17	3.17	3.17	3.17	3.17	3.17
140	1.15	1.15	1.15	1.15	1.15	1.15	1.15	1.15	1.15
137.5	3.17	3.17	3.17	3.17	3.17	3.17	3.17	3.17	3.17
135	0.998	0.998	0.998	0.998	0.998	0.998	0.998	0.998	0.998
132.5	3.17	3.17	3.17	3.17	3.17	3.17	3.17	3.17	3.17
130	0.923	0.923	0.923	0.923	0.923	0.923	0.923	0.923	0.923
127.5	3.17	3.17	3.17	3.17	3.17	3.17	3.17	3.17	3.17
125	0.877	0.877	0.877	0.877	0.877	0.877	0.877	0.877	0.877
122.5	3.17	3.17	3.17	3.17	3.17	3.17	3.17	3.17	3.17
120	0.900	0.900	0.900	0.900	0.900	0.900	0.900	0.900	0.900
117.5	3.17	3.17	3.17	3.17	3.17	3.17	3.17	3.17	3.17
115	0.907	0.907	0.907	0.907	0.907	0.907	0.907	0.907	0.907
112.5	3.17	3.17	3.17	3.17	3.17	3.17	3.17	3.17	3.17
110	0.947	0.947	0.947	0.947	0.947	0.947	0.947	0.947	0.947
107.5	3.17	3.17	3.17	3.17	3.17	3.17	3.17	3.17	3.17
105	0.993	0.993	0.993	0.993	0.993	0.993	0.993	0.993	0.993
102.5	3.17	3.17	3.17	3.17	3.17	3.17	3.17	3.17	3.17
100	1.07	1.07	1.07	1.07	1.07	1.07	1.07	1.07	1.07
97.5	3.17	3.17	3.17	3.17	3.17	3.17	3.17	3.17	3.17
95	1.15	1.15	1.15	1.15	1.15	1.15	1.15	1.15	1.15
92.5	3.17	3.17	3.17	3.17	3.17	3.17	3.17	3.17	3.17
90	1.30	1.30	1.30	1.30	1.30	1.30	1.30	1.30	1.30
87.5	3.17	3.17	3.17	3.17	3.17	3.17	3.17	3.17	3.17
85	2.30	2.30	2.30	2.30	2.30	2.30	2.30	2.30	2.30
82.5	3.17	3.17	3.17	3.17	3.17	3.17	3.17	3.17	3.17
80	4.01	4.01	4.01	4.01	4.01	4.01	4.01	4.01	4.01
77.5	3.17	3.17	3.17	3.17	3.17	3.17	3.17	3.17	3.17
75	6.26	6.26	6.26	6.26	6.26	6.26	6.26	6.26	6.26
72.5	3.17	3.17	3.17	3.17	3.17	3.17	3.17	3.17	3.17
70	8.75	8.75	8.75	8.75	8.75	8.75	8.75	8.75	8.75
67.5	3.17	3.17	3.17	3.17	3.17	3.17	3.17	3.17	3.17
65	11.3	11.3	11.3	11.3	11.3	11.3	11.3	11.3	11.3
62.5	3.17	3.17	3.17	3.17	3.17	3.17	3.17	3.17	3.17
60	14.3	14.3	14.3	14.3	14.3	14.3	14.3	14.3	14.3
57.5	3.17	3.17	3.17	3.17	3.17	3.17	3.17	3.17	3.17
55	16.9	16.9	16.9	16.9	16.9	16.9	16.9	16.9	16.9
52.5	3.17	3.17	3.17	3.17	3.17	3.17	3.17	3.17	3.17
50	20.0	20.0	20.0	20.0	20.0	20.0	20.0	20.0	20.0
47.5	3.17	3.17	3.17	3.17	3.17	3.17	3.17	3.17	3.17
45	29.4	29.4	29.4	29.4	29.4	29.4	29.4	29.4	29.4
42.5	3.17	3.17	3.17	3.17	3.17	3.17	3.17	3.17	3.17
40	68.6	68.6	68.6	68.6	68.6	68.6	68.6	68.6	68.6
37.5	3.17	3.17	3.17	3.17	3.17	3.17	3.17	3.17	3.17
35	120	120	120	120	120	120	120	120	120
32.5	3.17	3.17	3.17	3.17	3.17	3.17	3.17	3.17	3.17
30	251	251	251	251	251	251	251	251	251
27.5	3.17	3.17	3.17	3.17	3.17	3.17	3.17	3.17	3.17
25	368	368	368	368	368	368	368	368	368
22.5	3.17	3.17	3.17	3.17	3.17	3.17	3.17	3.17	3.17
20	544	544	544	544	544	544	544	544	544
17.5	3.09	3.09	3.09	3.09	3.09	3.09	3.09	3.09	3.09
15	804	804	804	804	804	804	804	804	804
12.5	0.877	0.877	0.877	0.877	0.877	0.877	0.877	0.877	0.877
10	1068	1068	1068	1068	1068	1068	1068	1068	1068
7.5	6.26	6.26	6.26	6.26	6.26	6.26	6.26	6.26	6.26
5	1244	1244	1244	1244	1244	1244	1244	1244	1244
2.5	368	368	368	368	368	368	368	368	368
0	1300	1300	1300	1300	1300	1300	1300	1300	1300

IES INDOOR REPORT

Light measurement results

Print date 9/25/2025

Gamma	C270	C280	C290	C300	C310	C320	C330	C340	C350
180	3.17	3.17	3.17	3.17	3.17	3.17	3.17	3.17	3.17
177.5	3.17	3.17	3.17	3.17	3.17	3.17	3.17	3.17	3.17
175	3.09	3.09	3.09	3.09	3.09	3.09	3.09	3.09	3.09
172.5	3.17	3.17	3.17	3.17	3.17	3.17	3.17	3.17	3.17
170	2.90	2.90	2.90	2.90	2.90	2.90	2.90	2.90	2.90
167.5	3.17	3.17	3.17	3.17	3.17	3.17	3.17	3.17	3.17
165	2.59	2.59	2.59	2.59	2.59	2.59	2.59	2.59	2.59
162.5	3.17	3.17	3.17	3.17	3.17	3.17	3.17	3.17	3.17
160	2.38	2.38	2.38	2.38	2.38	2.38	2.38	2.38	2.38
157.5	3.17	3.17	3.17	3.17	3.17	3.17	3.17	3.17	3.17
155	2.00	2.00	2.00	2.00	2.00	2.00	2.00	2.00	2.00
152.5	3.17	3.17	3.17	3.17	3.17	3.17	3.17	3.17	3.17
150	1.65	1.65	1.65	1.65	1.65	1.65	1.65	1.65	1.65
147.5	3.17	3.17	3.17	3.17	3.17	3.17	3.17	3.17	3.17
145	1.36	1.36	1.36	1.36	1.36	1.36	1.36	1.36	1.36
142.5	3.17	3.17	3.17	3.17	3.17	3.17	3.17	3.17	3.17
140	1.15	1.15	1.15	1.15	1.15	1.15	1.15	1.15	1.15
137.5	3.17	3.17	3.17	3.17	3.17	3.17	3.17	3.17	3.17
135	0.998	0.998	0.998	0.998	0.998	0.998	0.998	0.998	0.998
132.5	3.17	3.17	3.17	3.17	3.17	3.17	3.17	3.17	3.17
130	0.923	0.923	0.923	0.923	0.923	0.923	0.923	0.923	0.923
127.5	3.17	3.17	3.17	3.17	3.17	3.17	3.17	3.17	3.17
125	0.877	0.877	0.877	0.877	0.877	0.877	0.877	0.877	0.877
122.5	3.17	3.17	3.17	3.17	3.17	3.17	3.17	3.17	3.17
120	0.900	0.900	0.900	0.900	0.900	0.900	0.900	0.900	0.900
117.5	3.17	3.17	3.17	3.17	3.17	3.17	3.17	3.17	3.17
115	0.907	0.907	0.907	0.907	0.907	0.907	0.907	0.907	0.907
112.5	3.17	3.17	3.17	3.17	3.17	3.17	3.17	3.17	3.17
110	0.947	0.947	0.947	0.947	0.947	0.947	0.947	0.947	0.947
107.5	3.17	3.17	3.17	3.17	3.17	3.17	3.17	3.17	3.17
105	0.993	0.993	0.993	0.993	0.993	0.993	0.993	0.993	0.993
102.5	3.17	3.17	3.17	3.17	3.17	3.17	3.17	3.17	3.17
100	1.07	1.07	1.07	1.07	1.07	1.07	1.07	1.07	1.07
97.5	3.17	3.17	3.17	3.17	3.17	3.17	3.17	3.17	3.17
95	1.15	1.15	1.15	1.15	1.15	1.15	1.15	1.15	1.15
92.5	3.17	3.17	3.17	3.17	3.17	3.17	3.17	3.17	3.17
90	1.30	1.30	1.30	1.30	1.30	1.30	1.30	1.30	1.30
87.5	3.17	3.17	3.17	3.17	3.17	3.17	3.17	3.17	3.17
85	2.30	2.30	2.30	2.30	2.30	2.30	2.30	2.30	2.30
82.5	3.17	3.17	3.17	3.17	3.17	3.17	3.17	3.17	3.17
80	4.01	4.01	4.01	4.01	4.01	4.01	4.01	4.01	4.01
77.5	3.17	3.17	3.17	3.17	3.17	3.17	3.17	3.17	3.17
75	6.26	6.26	6.26	6.26	6.26	6.26	6.26	6.26	6.26
72.5	3.17	3.17	3.17	3.17	3.17	3.17	3.17	3.17	3.17
70	8.75	8.75	8.75	8.75	8.75	8.75	8.75	8.75	8.75
67.5	3.17	3.17	3.17	3.17	3.17	3.17	3.17	3.17	3.17
65	11.3	11.3	11.3	11.3	11.3	11.3	11.3	11.3	11.3
62.5	3.17	3.17	3.17	3.17	3.17	3.17	3.17	3.17	3.17
60	14.3	14.3	14.3	14.3	14.3	14.3	14.3	14.3	14.3
57.5	3.17	3.17	3.17	3.17	3.17	3.17	3.17	3.17	3.17
55	16.9	16.9	16.9	16.9	16.9	16.9	16.9	16.9	16.9
52.5	3.17	3.17	3.17	3.17	3.17	3.17	3.17	3.17	3.17
50	20.0	20.0	20.0	20.0	20.0	20.0	20.0	20.0	20.0
47.5	3.17	3.17	3.17	3.17	3.17	3.17	3.17	3.17	3.17
45	29.4	29.4	29.4	29.4	29.4	29.4	29.4	29.4	29.4
42.5	3.17	3.17	3.17	3.17	3.17	3.17	3.17	3.17	3.17
40	68.6	68.6	68.6	68.6	68.6	68.6	68.6	68.6	68.6
37.5	3.17	3.17	3.17	3.17	3.17	3.17	3.17	3.17	3.17
35	120	120	120	120	120	120	120	120	120
32.5	3.17	3.17	3.17	3.17	3.17	3.17	3.17	3.17	3.17
30	251	251	251	251	251	251	251	251	251
27.5	3.17	3.17	3.17	3.17	3.17	3.17	3.17	3.17	3.17
25	368	368	368	368	368	368	368	368	368
22.5	3.17	3.17	3.17	3.17	3.17	3.17	3.17	3.17	3.17
20	544	544	544	544	544	544	544	544	544
17.5	3.09	3.09	3.09	3.09	3.09	3.09	3.09	3.09	3.09
15	804	804	804	804	804	804	804	804	804
12.5	0.877	0.877	0.877	0.877	0.877	0.877	0.877	0.877	0.877
10	1068	1068	1068	1068	1068	1068	1068	1068	1068
7.5	6.26	6.26	6.26	6.26	6.26	6.26	6.26	6.26	6.26
5	1244	1244	1244	1244	1244	1244	1244	1244	1244
2.5	368	368	368	368	368	368	368	368	368
0	1300	1300	1300	1300	1300	1300	1300	1300	1300

UGR TABLE

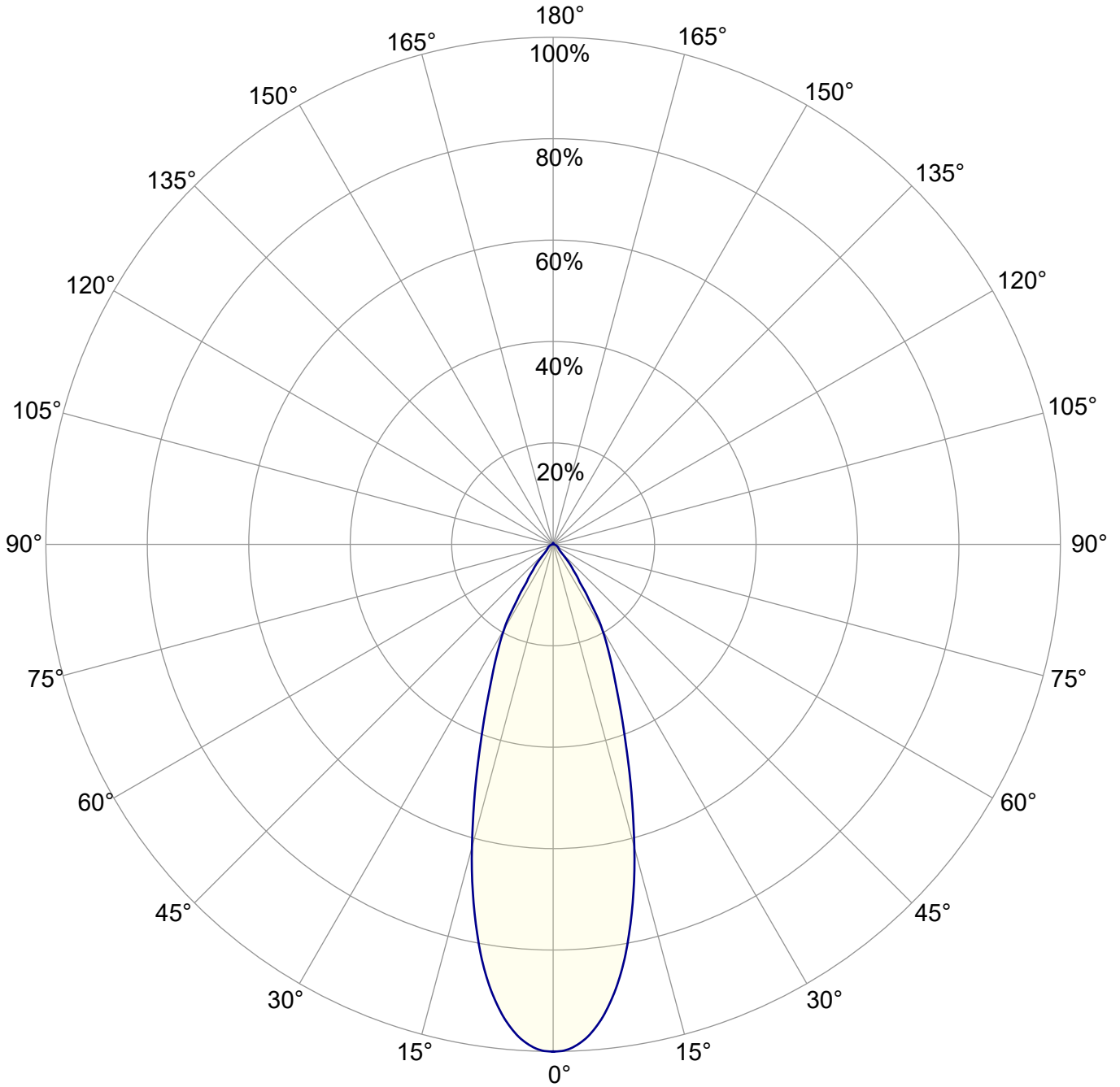
Uncorrected, comprehensive UGR table according to 117-1995, S/H ratio=0.25

Reflectances			70	70	50	50	30	70	70	50	50	30
	ρ Ceiling		70	70	50	50	30	70	70	50	50	30
	ρ Walls		50	30	50	30	30	50	30	50	30	30
	ρ Floor		20	20	20	20	20	20	20	20	20	20
Room size			Viewed Crosswise					Viewed Endwise				
H = mounting height above eye level			(Viewing direction orthogonal to lamp length axis)					(Viewing direction parallel to lamp length axis)				
	X	Y										
2H	2H		21.7	22.3	21.9	22.6	22.8	21.7	22.3	21.9	22.6	22.8
	3H		22.2	22.9	22.6	23.2	23.4	22.2	22.9	22.6	23.2	23.4
	4H		22.5	23.2	22.9	23.5	23.7	22.5	23.2	22.9	23.5	23.7
	6H		22.9	23.4	23.2	23.8	24.1	22.9	23.4	23.2	23.8	24.1
	8H		23.0	23.5	23.3	23.9	24.3	23.0	23.5	23.3	23.9	24.3
	12H		23.0	23.6	23.4	24.0	24.4	23.0	23.6	23.4	24.0	24.4
4H	2H		21.7	22.5	22.2	22.7	23.0	21.7	22.5	22.2	22.7	23.0
	3H		22.6	23.2	23.0	23.6	24.0	22.6	23.2	23.0	23.6	24.0
	4H		23.0	23.5	23.4	24.0	24.5	23.0	23.5	23.4	24.0	24.5
	6H		23.4	24.0	23.9	24.3	24.7	23.4	24.0	23.9	24.3	24.7
	8H		23.6	24.1	24.1	24.4	24.8	23.6	24.1	24.1	24.4	24.8
	12H		23.7	24.1	24.2	24.5	25.0	23.7	24.1	24.2	24.5	25.0
8H	4H		23.1	23.7	23.7	24.0	24.4	23.1	23.7	23.7	24.0	24.4
	6H		23.7	24.0	24.2	24.5	25.1	23.7	24.0	24.2	24.5	25.1
	8H		24.0	24.3	24.5	24.8	25.4	24.0	24.3	24.5	24.8	25.4
	12H		24.2	24.5	24.8	25.0	25.6	24.2	24.5	24.8	25.0	25.6
12H	4H		23.1	23.5	23.6	24.0	24.4	23.1	23.5	23.6	24.0	24.4
	6H		23.8	24.0	24.3	24.6	25.2	23.8	24.0	24.3	24.6	25.2
	8H		24.1	24.3	24.7	24.8	25.4	24.1	24.3	24.7	24.8	25.4
Variations with the observer position for the luminaire spacings, S:												
S = 1.0H			2.0 / -0.9					2.0 / -0.9				
S = 1.5H			3.8 / -1.0					3.8 / -1.0				
S = 2.0H			5.3 / -1.3					5.3 / -1.3				

COEFFICIENTS OF UTILIZATION

Ceiling reflectance	80				70				50				30				10				0
Wall reflectance	70	50	30	10	70	50	30	10	50	30	10	50	30	10	50	30	10	50	30	10	0
Floor reflectance	20	20	20	20	20	20	20	20	20	20	20	20	20	20	20	20	20	20	20	20	20
RCR (Room Cavity Ratio)																					
Room values are expressed as percentage of Lumen delivered to the task surface																					
0	118.8	118.8	118.8	118.8	115.9	115.9	115.9	115.9	110.5	110.5	110.5	105.5	105.5	105.5	101.0	101.0	101.0	101.0	101.0	101.0	98.8
1	113.1	110.3	107.8	105.6	110.6	108.1	105.8	103.8	103.8	102.0	100.4	99.9	98.5	97.2	96.3	95.2	94.2	94.2	94.2	94.2	92.3
2	107.7	102.9	98.9	95.5	105.4	101.1	97.4	94.4	97.7	94.7	92.1	94.5	92.1	90.0	91.6	89.7	88.0	88.0	88.0	88.0	86.3
3	102.6	96.4	91.5	87.6	100.6	94.9	90.4	86.9	92.1	88.4	85.3	89.6	86.5	83.9	87.2	84.6	82.4	82.4	82.4	82.4	80.8
4	97.9	90.6	85.3	81.2	96.0	89.4	84.5	80.7	87.1	82.9	79.6	85.0	81.4	78.6	83.0	80.0	77.5	77.5	77.5	77.5	76.0
5	93.4	85.5	79.9	75.8	91.8	84.5	79.3	75.4	82.6	78.1	74.7	80.8	77.0	73.9	79.2	75.9	73.2	73.2	73.2	73.2	71.7
6	89.3	80.9	75.3	71.2	87.8	80.1	74.8	70.9	78.5	73.8	70.3	77.0	72.9	69.8	75.6	72.0	69.2	69.2	69.2	69.2	67.8
7	85.5	76.8	71.1	67.2	84.1	76.1	70.7	67.0	74.7	70.0	66.5	73.5	69.3	66.1	72.3	68.5	65.7	65.7	65.7	65.7	64.3
8	81.9	73.0	67.5	63.6	80.7	72.4	67.1	63.5	71.3	66.5	63.1	70.2	65.9	62.8	69.2	65.3	62.5	62.5	62.5	62.5	61.2
9	78.6	69.6	64.1	60.4	77.5	69.1	63.9	60.3	68.1	63.4	60.1	67.2	62.9	59.8	66.3	62.4	59.5	59.5	59.5	59.5	58.3
10	75.5	66.5	61.2	57.6	74.5	66.1	60.9	57.5	65.2	60.5	57.3	64.4	60.1	57.1	63.6	59.7	56.9	56.9	56.9	56.9	55.7

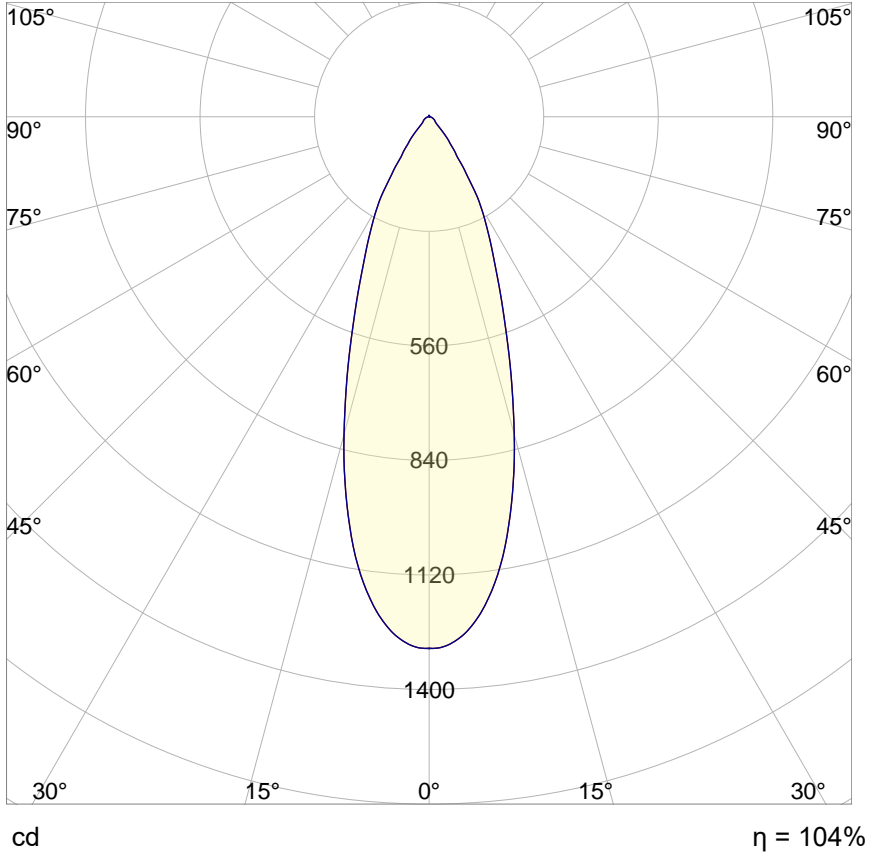
POLAR GRAPH - PEAK VALUES



Maximum intensity = 1299.6 cd. Located at horizontal, vertical angles 330H 0V

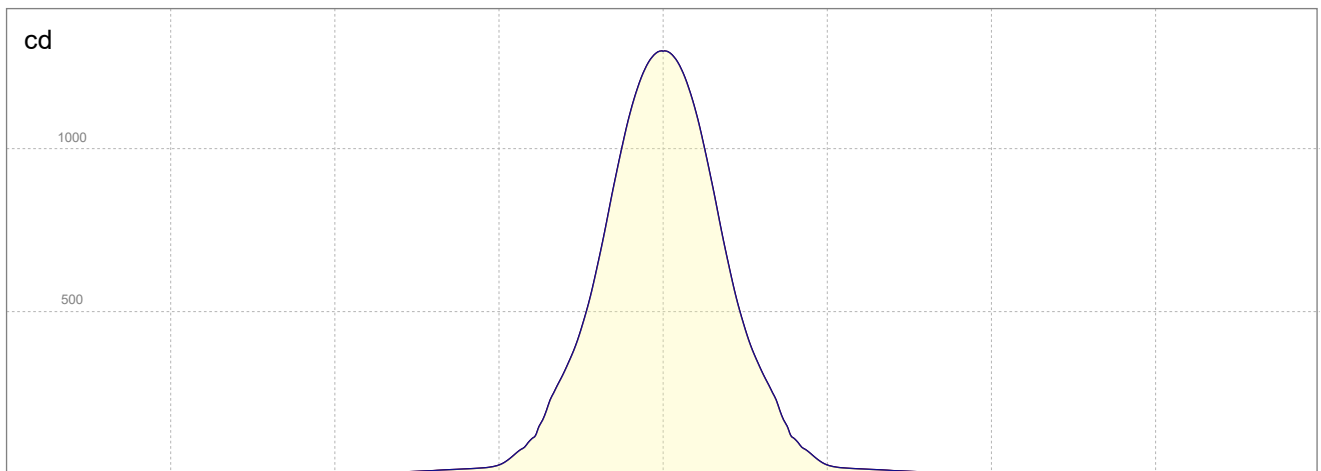
- Peak plane: C90 - C270 (through max.intensity cd)
- Horizontal cone through vertical angle 0

POLAR GRAPH - MAIN PLANES



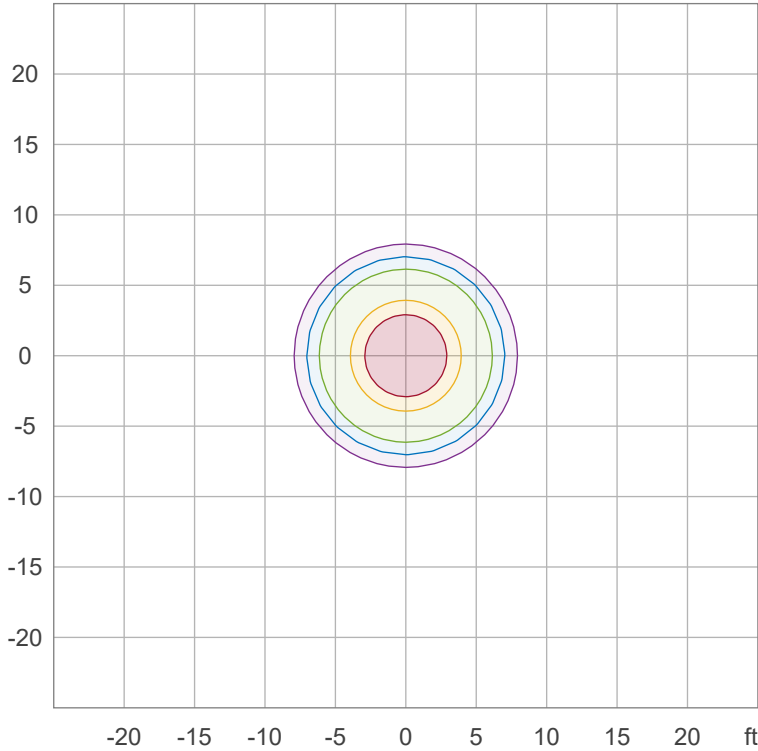
- C0 - C180
- C90 - C270

LINEAR INTENSITY DISTRIBUTION DIAGRAM



- C0 - C180
- C90 - C270
- Peak plane: C90 - C270

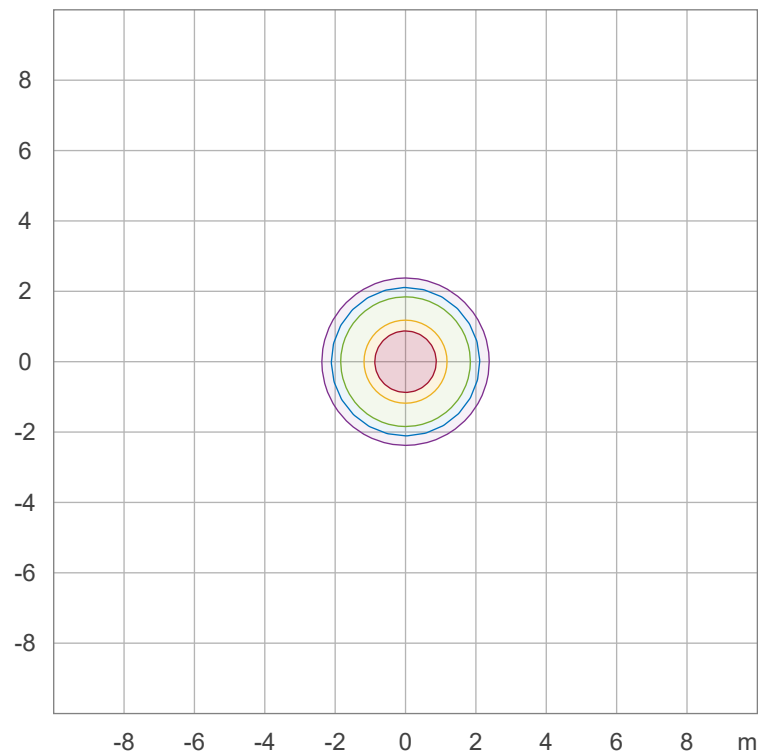
ISOFOOTCANDLE LINES OF HORIZONTAL ILLUMINANCE



50.0 %	6.5 fc
30.0 %	3.9 fc
10.0 %	1.3 fc
5.0 %	0.6 fc
3.0 %	0.4 fc

Peak illuminance: 13.0 fc
Mounting height: 10.0 ft
Number of c-planes: 12

ISOLUX LINES OF HORIZONTAL ILLUMINANCE



50.0 %	72.2 lx
30.0 %	43.3 lx
10.0 %	14.4 lx
5.0 %	7.2 lx
3.0 %	4.3 lx

Peak illuminance: 144.4 lx
Mounting height: 3.0 m
Number of c-planes: 12