

# End cap LIPOD

Ref. C24004C02, C24004C10, C24004L01, C24004C07

Ref. arch 24004, 24283, 24051, 24263

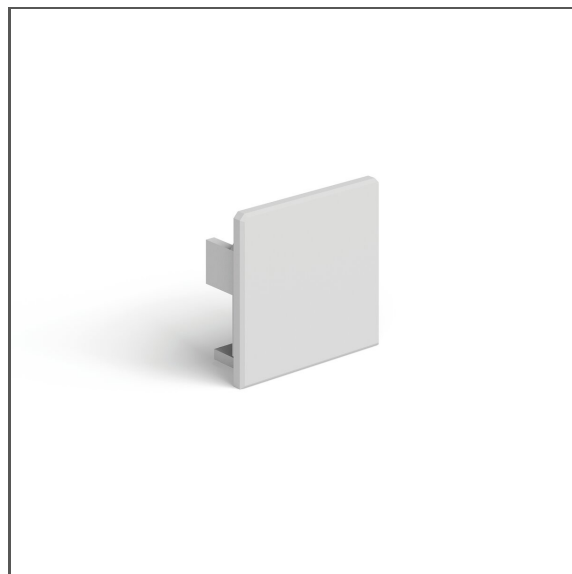


## APPLICATION

- aesthetic finish and protection of the interior of the lighting fixture

## MOUNTING

- to the extrusion, by pressing

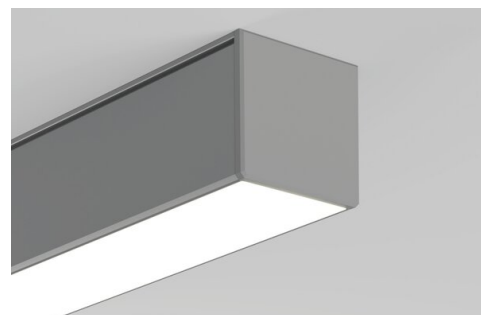
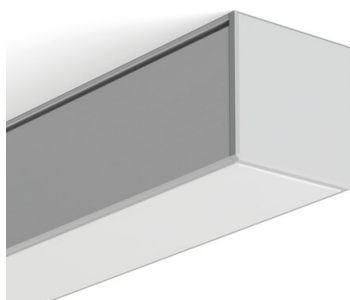
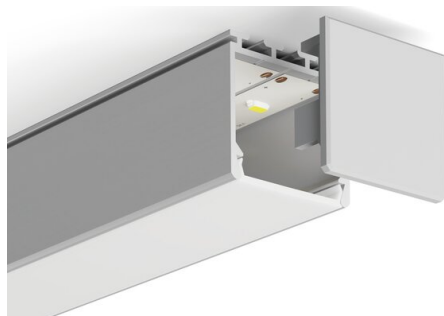


## TECHNICAL SPECIFICATIONS

Material	PP
Shape	rectangular
Height	0.94"
Width	1.02"
Corrosion resistance	yes
Corrosion resistance at high salinity	yes

Color	Ref
■ gray	<b>C24004C02</b> 24004
□ white	<b>C24004C10</b> 24283
■ silver	<b>C24004L01</b> 24051
■ black	<b>C24004C07</b> 24263

## SAMPLE PROJECTS

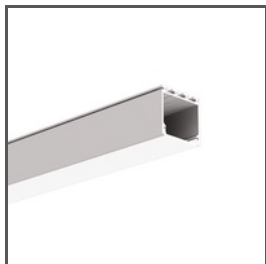


# End cap LIPOD

Ref. C24004C02, C24004C10, C24004L01, C24004C07

Ref. arch 24004, 24283, 24051, 24263

## RELATED PROFILES > ARCHITECTURAL



### LIPOD

A05554

Ref. arch B5554