

PTLP3 Series

LED Post Top Light Specifications

Project _____

Date _____ Type _____



Available Models¹

☐ PTLP3-SW3B75S-BT3BRWGM

☐ PTLP3-SW2B150S-BT3BRWGM

Part Number Breakdown

Example: PTLP3-SW3B75S-BT3BRWGM

Family	Color Temperature	Wattage	Wattage Options	LED Type	Distribution Type	Finish	Mounting
PTLP3	SW3B [selectable (3000K / 4000K / 5000K)]	75 [75 W]	S [selectable wattage]	B [Lumileds]	T3 [Type III-M]	BR [bronze]	WGM [Post Top]
	SW2B [selectable (4000K / 5000K)]	150 [150 W]					

Description

PTLP3 series post top light meets the design needs of any commercial or recreational outdoor setting while providing quality illumination. Within the housing, select between different color temperatures and wattages. Constructed of powder-coated aluminum, the durable exterior also resists corrosion. Post-top design provides downward distribution of light to increase safety and visibility in pedestrian spaces. Choose photocell option for maintenance-free dusk to dawn operation, or shorting cap for manual control.

Mechanical/Construction

- Bronze powder-coated aluminum body
- Polycarbonate lens
- IP65 environmental rating

Electrical

- 120–277 VAC input
- 0–10 V dimmable
- Built-in surge protection

Photometrics

- 155° x 90° beam angle
- Selectable CCT
- 120 lm/W efficacy

Photocell Options

- ☐ JL-205C (electronic photocell)
- ☐ JL-208 (shorting cap)

Certifications and Complies

These lights are Certified by UL in compliance with UL 1598 (IFAM) and are listed by DesignLights Consortium as DLC 5.1 Premium.



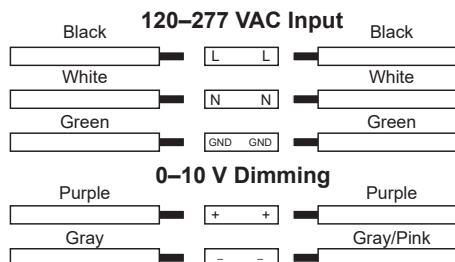
Application

Easily replaces inefficient metal-halide fixtures such as those found at parks, commercial streets, school campuses, and other commercial and recreational locations with pathway lighting.

Warranty

Five (5) year warranty

Wiring Diagram



¹Contact customer service if interested in options other than those listed.



T 866.811.5550

F 314.972.6202

email: commercial-sales@superbrightleds.com

www.superbrightleds.com/cat/industrial-led-lighting/

Rev V1 Date: 09/17/2023

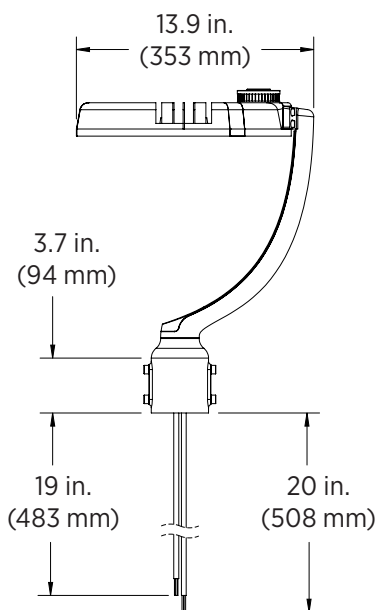
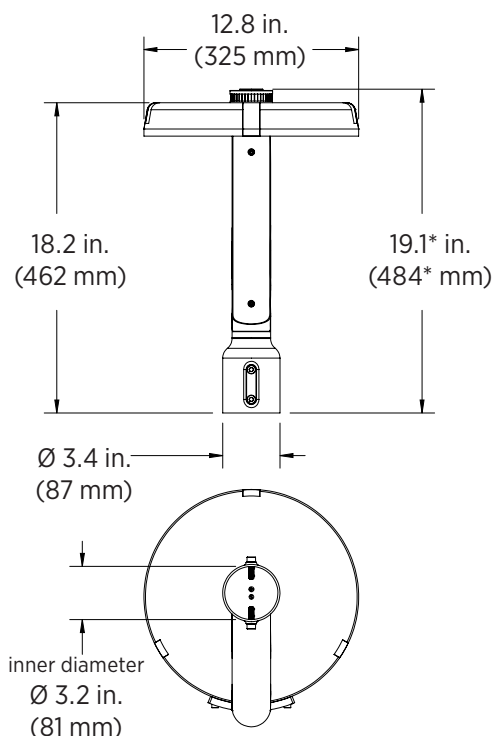
Specifications are subject to change without notice.

Printed in the U.S.A.

PTLP3 Series

LED Post Top Light Specifications

Dimensional Drawing



*photocell/shorting cap can add up to 2 in. (51 mm) to height

Specifications

Model	PTLP3-SW3B75S-BT3BRWGM	PTLP3-SW2B150S-BT3BRWGM
Intensity	9,000 / 7,200 / 6,000 lm	18,000 / 14,400 / 12,000
Operating Voltage	100-277 VAC	
Power Consumption	selectable (75 W / 60 W / 50 W)	selectable (150 W / 120 W / 100 W)
Current Draw	625 / 500 / 417 mA @ 120 VAC 271 / 217 / 181 mA @ 277 VAC	1.25 A / 1 A / 833 mA @ 120 VAC 542 mA / 433 / 361 mA @ 277 VAC
Efficacy	120 lm/W	
Color Temperature	selectable (3000K / 4000K / 5000K)	selectable (4000K / 5000K)
Beam Angle	155° x 90°	
Power Factor	≥0.9	
BUG Rating	B2-U2-G2	
Distribution Type	Type III-M	
CRI	80+	
Dimming	0-10 V	
IP Rating	IP65	
Ambient Operating Temperature	-40°-122° F (-40°-50° C)	
EPA	0.8 ft ²	1.3 ft ²
Surge Protection	6 kV (L-N), 4 kV (L/N-G)	
Rated Life (L70)	50,000 hours	

T 866.811.5550

F 314.972.6202

email: commercial-sales@superbrightleds.com

www.superbrightleds.com/cat/industrial-led-lighting/

Specifications are subject to change without notice.

