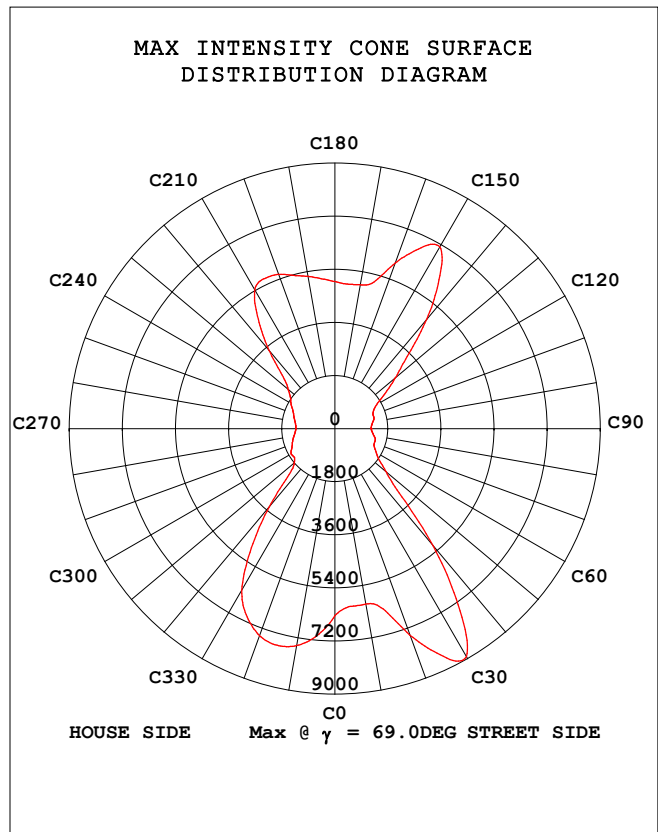
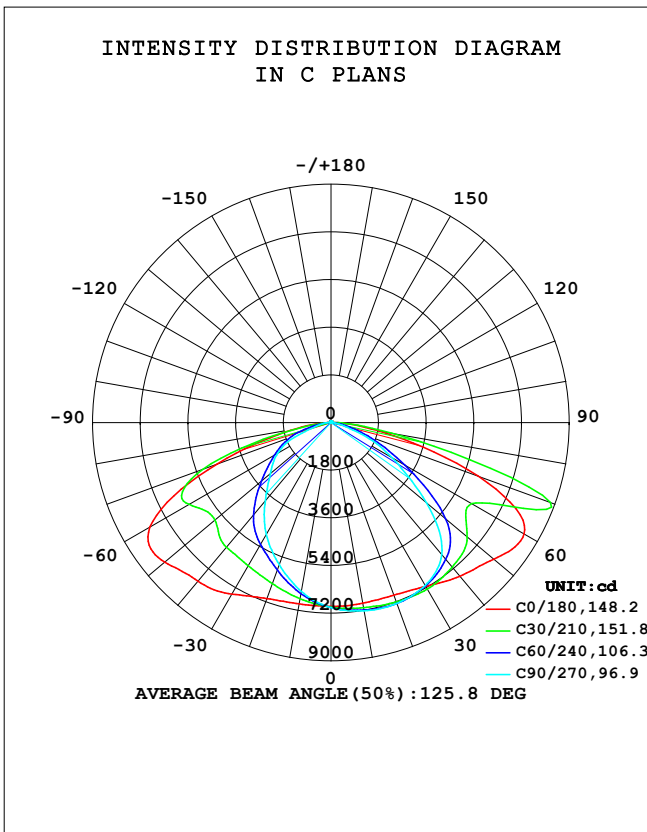


STREETLIGHT PHOTOMETRIC TEST REPORT

Test:U:243.32V I:0.6697A P:149.99W PF:0.9205 Freq:49.97Hz Lamp Flux:26325.8x1 lm		
NAME: ALDS2-SW3B500-xDS3	TYPE:	WEIGHT:
SPEC.:	DIM.:	SERIAL No.:
MFR.:	SUR.:	Shielding Angle:

DATA OF LAMP		PHOTOMETRIC DATA Eff: 175.52 lm/W			
MODEL	ALDS2-SW3B500-xDS3	I _{max} (cd)	8919	η street_up (%)	0.4
NOMINAL POWER (W)	150	LOR (%)	100.0	η street_down (%)	53.5
RATED VOLTAGE (V)	240	TOTAL FLUX (lm)	26326	η house_up (%)	0.6
NOMINAL FLUX (lm)	26325.8	MAXIMUM @ (C, γ)	30,69.0	η house_down (%)	45.5
LAMPS INSIDE	1	η up (%)	1.0	76 FLASHAREA (m2)	
TEST VOLTAGE (V)	240	η down (%)	99.0	SLI	

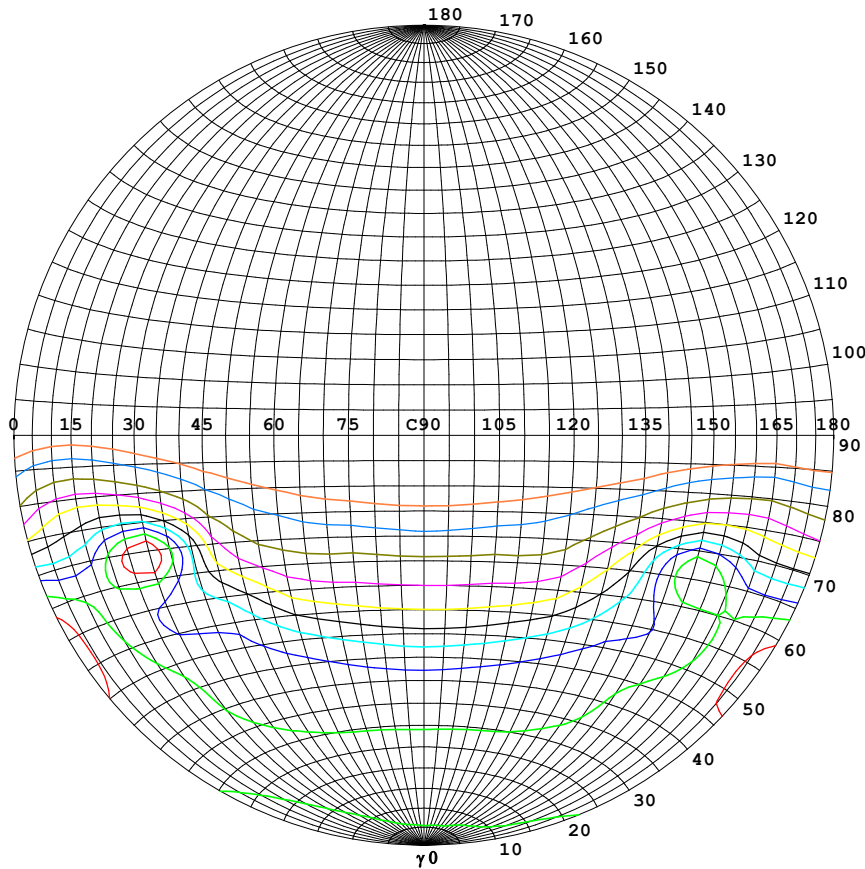


C Range: 0 - 360DEG
 C Interval: 5.0DEG
 Test Speed: HIGH
 Temperature: 25.3DEG
 Operators: DAMIN
 Test Date: 07 October 2023

γ Range: 0 - 180DEG
 γ Interval: 1.0DEG
 Test System: GO-2000B_V1 SYSTEM V2.00.446
 Humidity: 65.0%
 Test Distance: 7.850m [K=1.0000]
 Remarks:

STREETLIGHT ISOCANDELA DIAGRAM

Test:U:243.32V I:0.6697A P:149.99W PF:0.9205 Freq:49.97Hz Lamp Flux:26325.8x1 lm		
NAME: ALDS2-SW3B500-xDS3	TYPE:	WEIGHT:
SPEC.:	DIM.:	SERIAL No.:
MFR.:	SUR.:	Shielding Angle:



Classification:

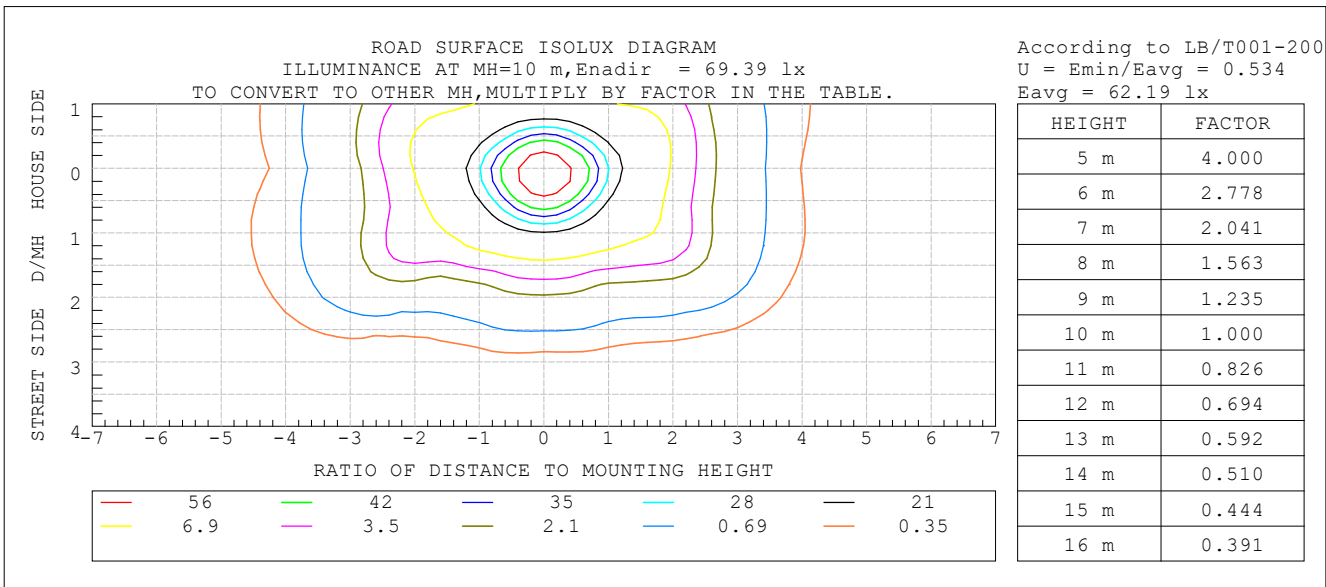
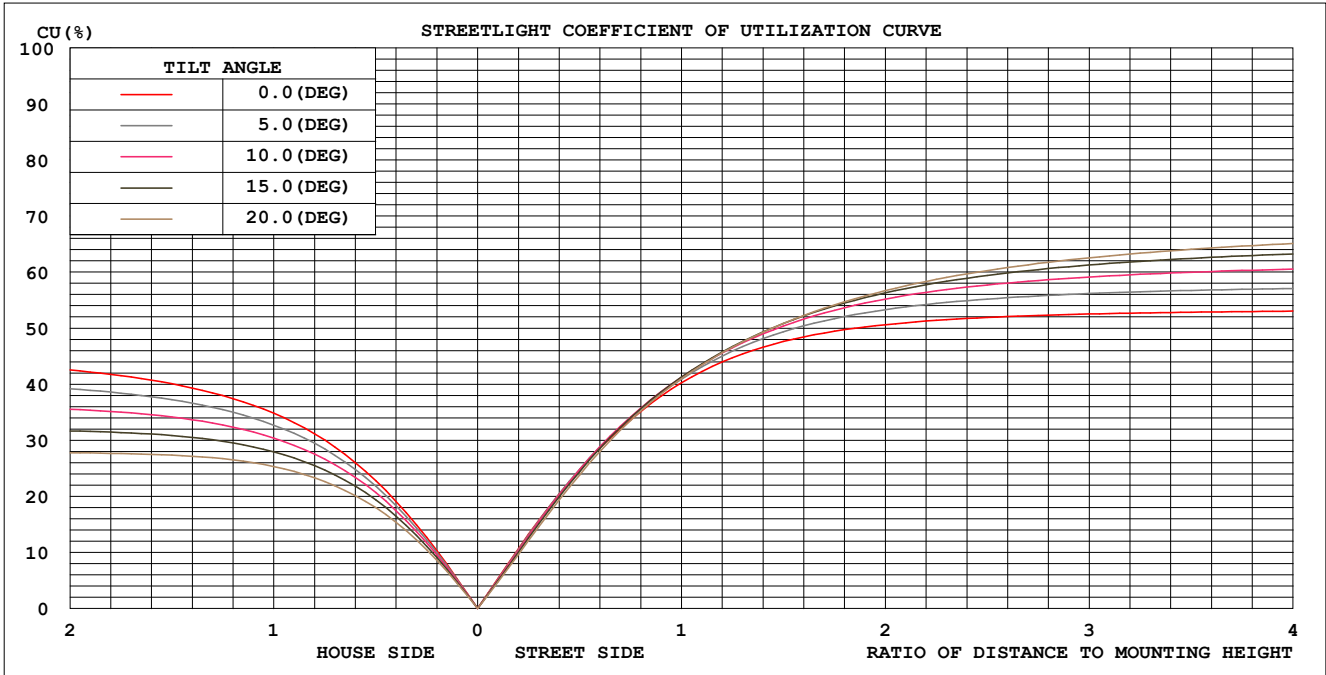
IES:Type III - Medium
 CIE:Broad - Intermediate
 IES:Semi cut-off
 CIE:Non-cut-off
 Max.At80:113.4cd/klm
 Max.At90:7.198cd/klm
 Max.80-90:113.4cd/klm
 NRB 5101:Limited[9.7%]

ISOCANDELA DIAGRAM	
UNIT	cd
I _{max} =100%	8919
90%	8027
80%	7135
70%	6243
60%	5351
50%	4460
40%	3568
30%	2676
20%	1784
10%	892
5%	446

C Range: 0 - 360DEG
 C Interval: 5.0DEG
 Test Speed: HIGH
 Temperature:25.3DEG
 Operators:DAMIN
 Test Date:07 October 2023

γ Range: 0 - 180DEG
 γ Interval: 1.0DEG
 Test System: GO-2000B_V1 SYSTEM V2.00.446
 Humidity:65.0%
 Test Distance:7.850m [K=1.0000]
 Remarks:

COEFFICIENT OF UTILIZATION CURVE
AND ISOLUX DIAGRAM



C Range: 0 - 360DEG
C Interval: 5.0DEG
Test Speed: HIGH
Temperature: 25.3DEG
Operators: DAMIN
Test Date: 07 October 2023

γ Range: 0 - 180DEG
 γ Interval: 1.0DEG
Test System: GO-2000B_V1 SYSTEM V2.00.446
Humidity: 65.0%
Test Distance: 7.850m [K=1.0000]
Remarks:

ZONAL FLUX DIAGRAM

Test:U:243.32V I:0.6697A P:149.99W PF:0.9205 Freq:49.97Hz Lamp Flux:26325.8x1 lm		
NAME: ALDS2-SW3B500-xDS3	TYPE:	WEIGHT:
SPEC.:	DIM.:	SERIAL No.:
MFR.:	SUR.:	Shielding Angle:

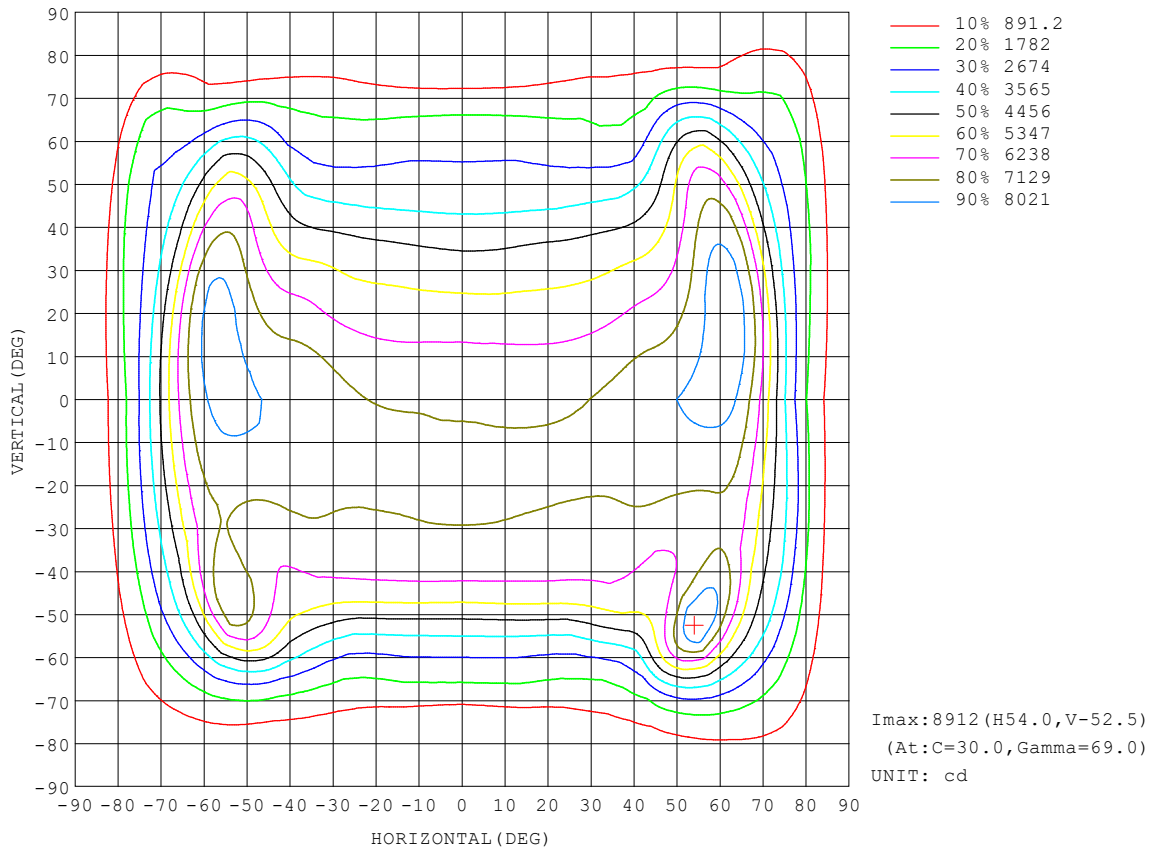
γ	C0	C45	C90	C135	C180	C225	C270	C315	γ	Φ zone	Φ total	%lum,lamp
10	6925	7148	7217	7183	6953	6642	6474	6636	0- 10	662.7	662.7	2.52,2.52
20	6939	7253	7269	7311	7072	6156	5717	6111	10- 20	1932	2595	9.86,9.86
30	7144	7187	7105	7235	7478	5670	4892	5572	20- 30	3070	5664	21.5,21.5
40	7580	6887	6503	6923	7819	5217	3870	5084	30- 40	4018	9683	36.8,36.8
50	8026	6442	4702	6359	8198	4360	2992	4305	40- 50	4590	14272	54.2,54.2
60	8422	5147	2669	5201	7896	3270	2330	3128	50- 60	4620	18893	71.8,71.8
70	5915	2917	1054	3174	4566	2364	1180	2117	60- 70	4261	23154	88,88
80	1807	899.9	227.5	729.4	1334	700.6	384.7	913.2	70- 80	2390	25544	97,97
90	70.88	14.09	5.560	12.41	28.25	26.83	11.33	29.51	80- 90	523.6	26067	99,99
100	32.58	18.46	10.30	20.67	43.75	30.17	16.01	28.40	90-100	23.82	26091	99.1,99.1
110	46.16	27.59	16.65	29.66	55.76	40.13	26.24	38.53	100-110	31.55	26123	99.2,99.2
120	54.10	36.11	24.11	37.18	60.99	49.37	38.24	48.61	110-120	38.93	26162	99.4,99.4
130	55.89	43.08	31.75	40.51	60.79	53.50	48.84	56.94	120-130	41.74	26203	99.5,99.5
140	54.28	47.35	38.59	42.71	58.80	56.28	56.05	60.88	130-140	39.22	26243	99.7,99.7
150	55.57	51.30	44.96	46.70	59.91	59.22	59.07	62.64	140-150	33.64	26276	99.8,99.8
160	59.70	56.49	51.97	52.26	62.54	61.24	61.96	64.15	150-160	26.24	26302	99.9,99.9
170	64.96	61.82	58.94	58.91	65.55	63.44	63.91	64.86	160-170	17.22	26320	100,100
180	66.83	63.53	62.31	63.18	66.68	63.61	62.25	63.23	170-180	6.061	26326	100,100
DEG	LUMINOUS INTENSITY:cd									UNIT:lm		

C Range: 0 - 360DEG
 C Interval: 5.0DEG
 Test Speed: HIGH
 Temperature:25.3DEG
 Operators:DAMIN
 Test Date:07 October 2023

γ Range: 0 - 180DEG
 γInterval: 1.0DEG
 Test System: GO-2000B_V1 SYSTEM V2.00.446
 Humidity:65.0%
 Test Distance:7.850m [K=1.0000]
 Remarks:

ISOCANDELA DIAGRAM

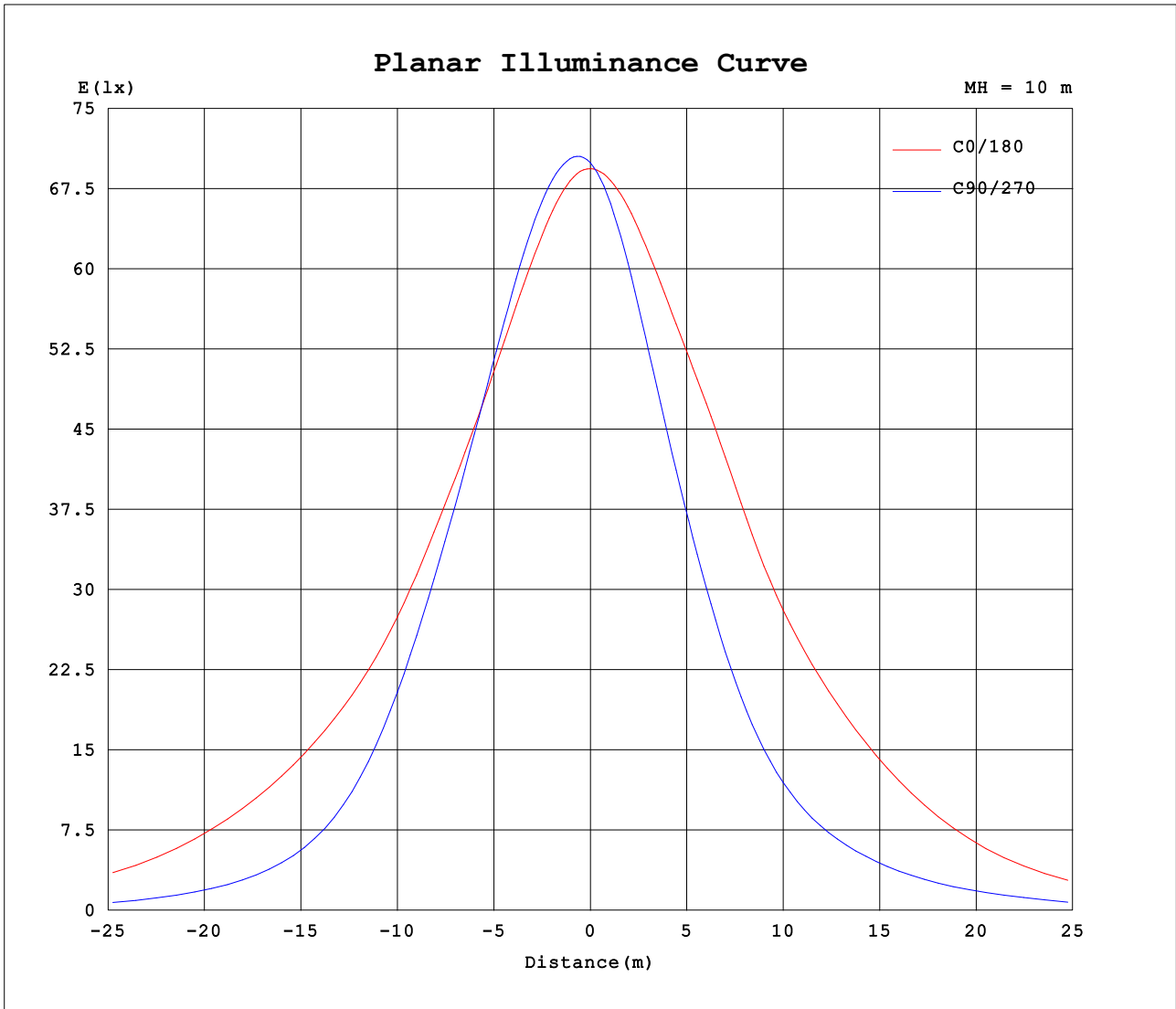
Test:U:243.32V I:0.6697A P:149.99W PF:0.9205 Freq:49.97Hz Lamp Flux:26325.8x1 lm		
NAME: ALDS2-SW3B500-xDS3	TYPE:	WEIGHT:
SPEC.:	DIM.:	SERIAL No.:
MFR.:	SUR.:	Shielding Angle:



C Range: 0 - 360DEG
 C Interval: 5.0DEG
 Test Speed: HIGH
 Temperature:25.3DEG
 Operators:DAMIN
 Test Date:07 October 2023

γ Range: 0 - 180DEG
 γ Interval: 1.0DEG
 Test System: GO-2000B_V1 SYSTEM V2.00.446
 Humidity:65.0%
 Test Distance:7.850m [K=1.0000]
 Remarks:

Planar Illuminance Curve



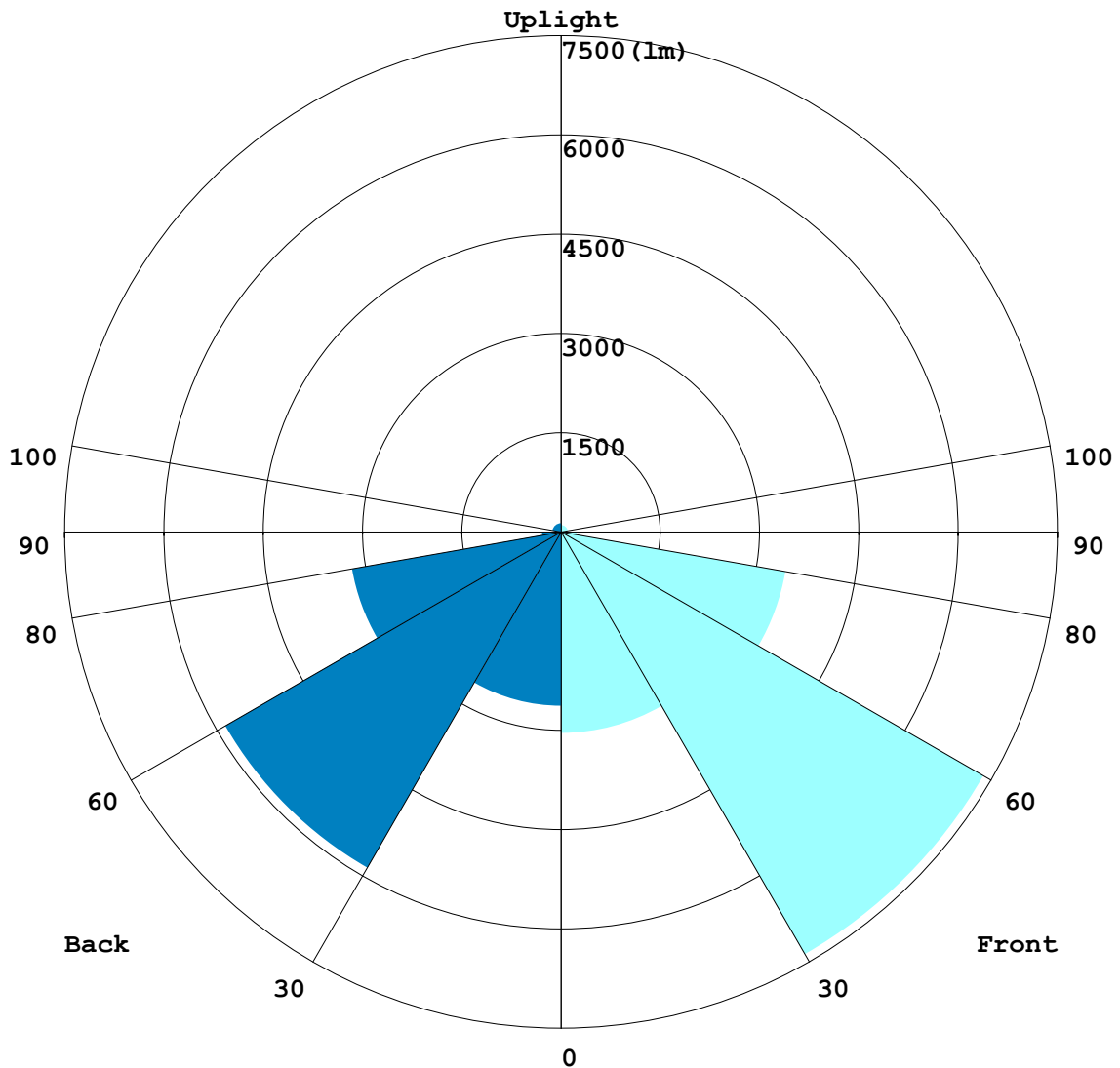
C Range: 0 - 360DEG
C Interval: 5.0DEG
Test Speed: HIGH
Temperature:25.3DEG
Operators:DAMIN
Test Date:07 October 2023

γ Range: 0 - 180DEG
γ Interval: 1.0DEG
Test System: GO-2000B_V1 SYSTEM V2.00.446
Humidity:65.0%
Test Distance:7.850m [K=1.0000]
Remarks:

LCS REPORT

Test:U:243.32V I:0.6697A P:149.99W PF:0.9205 Freq:49.97Hz		
Lamp Flux:26325.8x1 lm		
NAME: ALDS2-SW3B500-xDS3	TYPE:	WEIGHT:
SPEC.:	DIM.:	SERIAL No.:
MFR.:	SUR.:	Shielding Angle:

LUMINAIRE CLASSIFICATION SYSTEM(LCS) GRAPH



C Range: 0 - 360DEG
 C Interval: 5.0DEG
 Test Speed: HIGH
 Temperature:25.3DEG
 Operators:DAMIN
 Test Date:07 October 2023

γ Range: 0 - 180DEG
 γ Interval: 1.0DEG
 Test System: GO-2000B_V1 SYSTEM V2.00.446
 Humidity:65.0%
 Test Distance:7.850m [K=1.0000]
 Remarks:

BUG REPORT

Test:U:243.32V I:0.6697A P:149.99W PF:0.9205 Freq:49.97Hz Lamp Flux:26325.8x1 lm		
NAME: ALDS2-SW3B500-xDS3	TYPE:	WEIGHT:
SPEC.:	DIM.:	SERIAL No.:
MFR.:	SUR.:	Shielding Angle:

IESNA Luminaire Flux Distribution Table:

Zone	Lumens	Luminaire %
FL - Front-Low(0-30)	3038.1	11.5
FM - Front-Medium(30-60)	7368.5	28.0
FH - Front-High(60-80)	3444.9	13.1
FVH - Front-Very High(80-90)	238.06	0.9
Total Forward Light	14203	54.0

BL - Back-Low(0-30)	2626.1	10.0
BM - Back-Medium(30-60)	5860.2	22.3
BH - Back-High(60-80)	3205.9	12.2
BVH - Back-Very High(80-90)	285.58	1.1
Total Back Light	12123	46.0

UL - Uplight-Low(90-100)	23.822	0.1
UH - Uplight-High(100-180)	234.6	0.9
Total Up Light	258.42	1.0

BUG(Back,Up,Glare) Rating	B4-U3-G4
---------------------------	----------

Zone	Downward Lumens	Upward Lumens	Total Lumens
House Side	11978	145.05	12123
Street Side	14090	113.38	14203

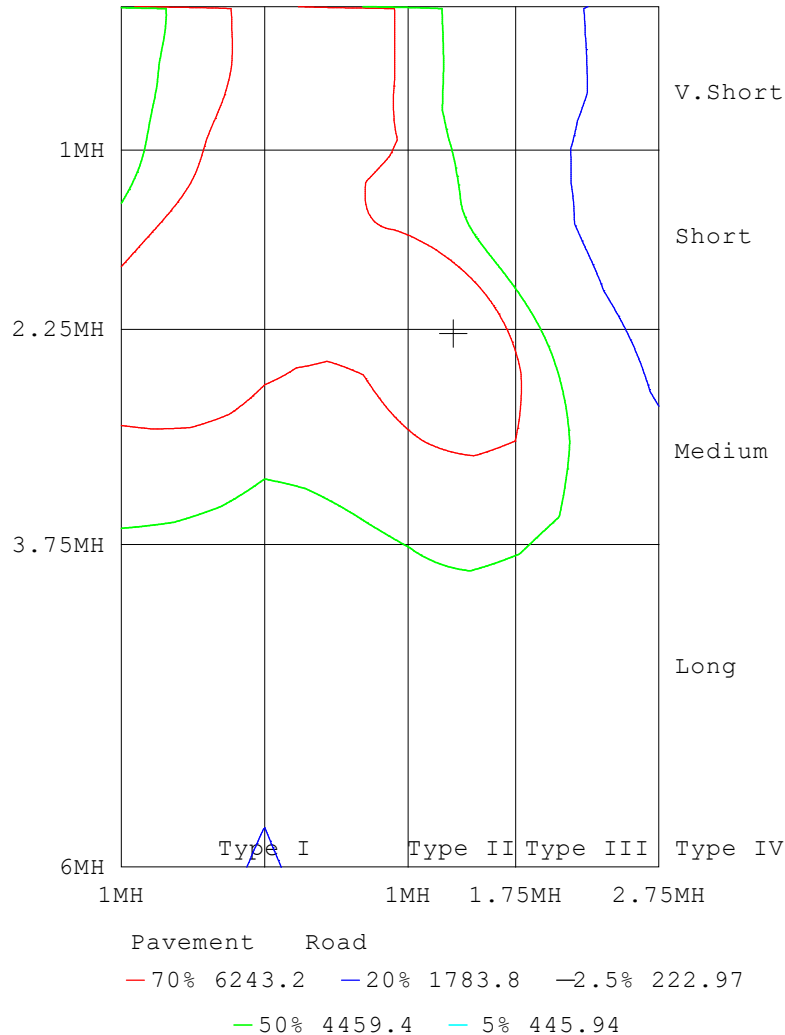
C Range: 0 - 360DEG
C Interval: 5.0DEG
Test Speed: HIGH
Temperature:25.3DEG
Operators:DAMIN
Test Date:07 October 2023

γ Range: 0 - 180DEG
 γ Interval: 1.0DEG
Test System: GO-2000B_V1 SYSTEM V2.00.446
Humidity:65.0%
Test Distance:7.850m [K=1.0000]
Remarks:

ROAD ISOCANDELA REPORT

Test:U:243.32V I:0.6697A P:149.99W PF:0.9205 Freq:49.97Hz		
Lamp Flux:26325.8x1 lm		
NAME: ALDS2-SW3B500-xDS3	TYPE:	WEIGHT:
SPEC.:	DIM.:	SERIAL No.:
MFR.:	SUR.:	Shielding Angle:

ROAD SURFACE ISOCANDELA DIAGRAM



C Range: 0 - 360DEG
 C Interval: 5.0DEG
 Test Speed: HIGH
 Temperature:25.3DEG
 Operators:DAMIN
 Test Date:07 October 2023

γ Range: 0 - 180DEG
 γ Interval: 1.0DEG
 Test System: GO-2000B_V1 SYSTEM V2.00.446
 Humidity:65.0%
 Test Distance:7.850m [K=1.0000]
 Remarks:

Photometric Data Table [cd]

G/C	0.0	5.0	10.0	15.0	20.0	25.0	30.0	35.0	40.0	45.0
0.0	6939	6943	6948	6953	6959	6965	6969	6973	6975	6977
3.0	6940	6954	6968	6981	6995	7007	7019	7028	7037	7044
6.0	6937	6959	6981	7001	7021	7039	7056	7071	7085	7097
9.0	6928	6960	6989	7017	7042	7066	7087	7106	7123	7138
12.0	6918	6960	6998	7033	7065	7093	7117	7139	7158	7174
15.0	6916	6968	7015	7058	7094	7126	7154	7176	7195	7211
18.0	6926	6987	7041	7088	7128	7161	7188	7210	7228	7242
21.0	6948	7018	7077	7127	7165	7195	7218	7235	7248	7256
24.0	6988	7063	7125	7173	7207	7229	7243	7251	7253	7252
27.0	7053	7129	7189	7232	7254	7262	7260	7254	7242	7229
30.0	7144	7215	7266	7297	7299	7287	7264	7240	7214	7187
33.0	7264	7323	7356	7365	7338	7295	7243	7198	7154	7115
36.0	7404	7443	7454	7434	7369	7287	7199	7133	7075	7025
39.0	7538	7571	7564	7517	7408	7278	7145	7056	6981	6919
42.0	7651	7686	7669	7600	7445	7265	7085	6976	6889	6816
45.0	7764	7779	7738	7641	7449	7231	7017	6892	6791	6700
48.0	7905	7841	7734	7584	7353	7108	6878	6761	6665	6565
51.0	8089	7893	7677	7441	7148	6864	6616	6532	6467	6373
54.0	8290	7948	7610	7277	6912	6579	6305	6251	6211	6112
57.0	8426	7949	7507	7099	6710	6369	6088	6000	5907	5733
60.0	8422	7868	7383	6967	6660	6392	6136	5862	5542	5147
63.0	8138	7622	7219	6929	6907	6880	6731	6051	5234	4379
66.0	7413	7007	6800	6794	7347	7830	7972	6736	5193	3652
69.0	6339	6047	6044	6330	7448	8447	8919	7282	5183	3094
72.0	4997	4984	5168	5548	6588	7475	7862	6361	4442	2536
75.0	3619	3978	4316	4634	5142	5471	5464	4403	3110	1846
78.0	2456	3111	3564	3815	3859	3707	3364	2691	1947	1249
81.0	1545	2058	2392	2548	2473	2258	1940	1542	1130	753.5
84.0	918.5	1235	1431	1508	1421	1248	1023	795.5	572.4	375.2
87.0	401.6	582.5	692.5	731.7	668.1	557.5	423.8	312.1	209.2	123.0
90.0	70.88	134.4	173.9	189.5	169.5	134.2	92.38	61.58	34.83	14.09
93.0	22.59	22.43	22.06	21.47	20.71	19.70	18.42	16.55	14.55	12.58
96.0	26.83	26.33	25.68	24.86	23.96	22.84	21.45	19.44	17.27	15.11
99.0	31.13	30.41	29.52	28.47	27.31	25.94	24.33	22.19	19.91	17.64
102.0	35.48	34.52	33.41	32.16	30.81	29.26	27.48	25.15	22.69	20.25
105.0	39.79	38.64	37.33	35.87	34.28	32.51	30.53	28.08	25.52	22.98
108.0	43.80	42.46	40.96	39.30	37.48	35.50	33.35	30.86	28.29	25.75
111.0	47.27	45.73	44.07	42.27	40.36	38.31	36.11	33.63	31.07	28.52
114.0	50.13	48.46	46.71	44.88	43.01	41.02	38.88	36.38	33.78	31.17
117.0	52.36	50.71	49.00	47.23	45.47	43.59	41.53	39.01	36.37	33.70
120.0	54.10	52.56	50.95	49.27	47.61	45.82	43.84	41.37	38.76	36.11
123.0	55.27	53.91	52.46	50.91	49.35	47.65	45.75	43.40	40.91	38.37
126.0	55.87	54.71	53.45	52.09	50.68	49.13	47.38	45.25	42.95	40.57
129.0	55.97	55.01	53.95	52.79	51.59	50.25	48.71	46.81	44.73	42.51
132.0	55.63	54.94	54.14	53.24	52.32	51.24	49.94	48.19	46.22	44.11
135.0	55.12	54.76	54.27	53.65	52.99	52.13	51.00	49.35	47.46	45.42
138.0	54.55	54.60	54.45	54.11	53.63	52.90	51.88	50.31	48.51	46.58
141.0	54.20	54.62	54.76	54.62	54.19	53.48	52.48	51.05	49.43	47.72
144.0	54.19	54.81	55.12	55.11	54.76	54.12	53.20	51.91	50.45	48.93
147.0	54.67	55.34	55.69	55.72	55.39	54.77	53.90	52.73	51.43	50.08
150.0	55.57	56.13	56.40	56.39	56.03	55.42	54.60	53.58	52.45	51.30
153.0	56.47	56.86	57.04	57.00	56.73	56.25	55.59	54.68	53.67	52.63
156.0	57.48	57.78	57.91	57.86	57.63	57.23	56.67	55.88	55.01	54.10
159.0	59.01	59.25	59.35	59.29	59.09	58.73	58.23	57.48	56.65	55.81
162.0	60.92	61.09	61.11	61.01	60.75	60.36	59.86	59.17	58.43	57.71
165.0	62.51	62.62	62.62	62.51	62.29	61.97	61.54	60.95	60.31	59.68
168.0	63.96	64.02	63.98	63.84	63.58	63.23	62.79	62.23	61.62	61.03
171.0	65.43	65.46	65.38	65.16	64.78	64.30	63.77	63.24	62.70	62.19
174.0	66.70	66.46	66.15	65.78	65.32	64.82	64.31	63.84	63.39	62.96
177.0	66.60	66.21	65.83	65.46	65.11	64.76	64.39	63.91	63.43	62.98
180.0	66.83	66.39	65.99	65.63	65.37	65.12	64.84	64.40	63.95	63.53
G/C	50.0	55.0	60.0	65.0	70.0	75.0	80.0	85.0	90.0	95.0
0.0	6981	6984	6986	6986	6986	6986	6989	6992	6994	6992
3.0	7052	7059	7065	7069	7073	7076	7078	7080	7080	7079
6.0	7108	7118	7126	7132	7136	7140	7143	7146	7148	7147
9.0	7152	7164	7174	7181	7187	7192	7196	7198	7200	7199
12.0	7190	7204	7215	7224	7230	7235	7239	7242	7243	7243
15.0	7226	7239	7249	7256	7262	7265	7268	7270	7271	7271
18.0	7253	7262	7269	7273	7276	7277	7277	7277	7276	7276
21.0	7262	7265	7266	7268	7269	7268	7266	7264	7262	7262
24.0	7249	7244	7240	7239	7239	7239	7237	7236	7235	7234
27.0	7216	7205	7195	7191	7190	7190	7187	7185	7184	7183
30.0	7165	7145	7130	7123	7120	7118	7112	7108	7105	7108

C Range: 0 - 360DEG

C Interval: 5.0DEG

Test Speed: HIGH

Temperature: 25.3DEG

Operators: DAMIN

Test Date: 07 October 2023

γ Range: 0 - 180DEG

γ Interval: 1.0DEG

Test System: GO-2000B_V1 SYSTEM V2.00.446

Humidity: 65.0%

Test Distance: 7.850m [K=1.0000]

Remarks:

Photometric Data Table [cd]

33.0	7087	7064	7046	7031	7019	7010	7003	6999	6998	7003
36.0	6987	6957	6932	6908	6887	6869	6853	6842	6837	6848
39.0	6871	6831	6794	6750	6708	6670	6637	6614	6604	6622
42.0	6750	6688	6626	6546	6466	6392	6329	6284	6263	6292
45.0	6597	6492	6381	6249	6117	5996	5892	5815	5777	5811
48.0	6393	6203	6006	5810	5625	5460	5319	5216	5164	5198
51.0	6098	5781	5456	5189	4954	4757	4609	4510	4465	4486
54.0	5691	5208	4732	4435	4205	4033	3898	3814	3779	3792
57.0	5166	4537	3945	3659	3477	3368	3266	3205	3183	3192
60.0	4490	3820	3228	2988	2870	2826	2745	2692	2669	2679
63.0	3681	3081	2613	2422	2346	2336	2271	2226	2203	2213
66.0	2891	2386	2085	1935	1889	1898	1834	1782	1751	1765
69.0	2274	1823	1627	1481	1428	1424	1342	1274	1232	1254
72.0	1794	1387	1206	1043	962.2	928.2	848.4	788.3	756.0	778.0
75.0	1316	1007	850.0	710.0	631.1	592.4	546.0	518.4	509.0	514.5
78.0	908.0	692.2	566.8	470.5	415.8	388.6	356.6	337.3	330.0	332.0
81.0	553.1	421.1	339.8	279.8	244.6	225.7	203.1	188.4	181.5	183.2
84.0	268.7	199.8	158.0	125.7	105.6	92.79	74.38	60.07	51.30	53.70
87.0	80.19	56.04	44.52	34.22	28.47	25.22	18.74	13.47	10.16	12.16
90.0	7.183	5.781	7.422	6.588	6.178	6.032	5.773	5.615	5.560	5.587
93.0	11.02	9.684	8.595	7.840	7.314	6.980	6.800	6.746	6.790	6.797
96.0	13.28	11.68	10.35	9.445	8.817	8.419	8.204	8.138	8.182	8.169
99.0	15.65	13.88	12.39	11.34	10.58	10.08	9.813	9.719	9.757	9.740
102.0	18.10	16.17	14.53	13.34	12.45	11.85	11.52	11.40	11.44	11.42
105.0	20.70	18.64	16.86	15.50	14.46	13.74	13.38	13.26	13.31	13.29
108.0	23.37	21.18	19.26	17.76	16.59	15.76	15.36	15.23	15.29	15.26
111.0	26.05	23.74	21.69	20.06	18.79	17.87	17.44	17.30	17.37	17.33
114.0	28.64	26.27	24.15	22.44	21.07	20.08	19.61	19.45	19.51	19.48
117.0	31.16	28.78	26.63	24.87	23.45	22.40	21.90	21.72	21.77	21.74
120.0	33.60	31.23	29.10	27.33	25.90	24.83	24.30	24.09	24.11	24.08
123.0	35.90	33.57	31.46	29.74	28.35	27.31	26.76	26.51	26.50	26.47
126.0	38.11	35.77	33.64	32.02	30.73	29.78	29.21	28.93	28.86	28.84
129.0	40.11	37.77	35.65	34.12	32.92	32.03	31.46	31.14	31.04	31.01
132.0	41.81	39.57	37.54	36.07	34.94	34.10	33.55	33.24	33.13	33.10
135.0	43.29	41.23	39.37	38.00	36.93	36.14	35.61	35.31	35.19	35.16
138.0	44.67	42.85	41.19	39.93	38.93	38.17	37.67	37.38	37.25	37.20
141.0	46.08	44.51	43.07	41.89	40.90	40.14	39.67	39.38	39.25	39.15
144.0	47.52	46.17	44.91	43.79	42.84	42.08	41.65	41.39	41.26	41.10
147.0	48.87	47.72	46.65	45.63	44.74	44.01	43.59	43.31	43.14	42.93
150.0	50.25	49.26	48.32	47.43	46.63	45.96	45.52	45.20	44.96	44.68
153.0	51.72	50.86	50.03	49.22	48.48	47.84	47.40	47.06	46.78	46.45
156.0	53.31	52.55	51.82	51.08	50.40	49.79	49.36	49.00	48.70	48.36
159.0	55.16	54.56	53.97	53.31	52.68	52.11	51.71	51.38	51.10	50.78
162.0	57.19	56.71	56.22	55.58	54.95	54.37	53.99	53.68	53.43	53.16
165.0	59.18	58.72	58.25	57.68	57.13	56.65	56.37	56.17	56.00	55.73
168.0	60.58	60.17	59.76	59.24	58.75	58.32	58.11	57.97	57.85	57.64
171.0	61.78	61.39	61.01	60.55	60.12	59.76	59.62	59.54	59.48	59.32
174.0	62.58	62.23	61.90	61.53	61.20	60.94	60.82	60.76	60.73	60.66
177.0	62.63	62.33	62.04	61.70	61.40	61.15	61.06	61.02	61.03	61.00
180.0	63.27	63.05	62.86	62.61	62.38	62.22	62.20	62.24	62.31	62.35
G/C	100.0	105.0	110.0	115.0	120.0	125.0	130.0	135.0	140.0	145.0
0.0	6990	6989	6992	6995	6998	6997	6996	6995	6998	7001
3.0	7078	7076	7076	7075	7074	7071	7067	7062	7060	7057
6.0	7145	7142	7141	7139	7136	7130	7123	7115	7109	7102
9.0	7198	7196	7194	7192	7189	7182	7173	7164	7158	7151
12.0	7241	7239	7238	7236	7234	7228	7221	7213	7207	7200
15.0	7270	7269	7268	7266	7264	7264	7260	7256	7254	7250
18.0	7277	7278	7280	7283	7286	7288	7290	7292	7296	7298
21.0	7264	7267	7271	7277	7284	7294	7305	7316	7330	7342
24.0	7234	7236	7240	7247	7258	7275	7295	7317	7344	7369
27.0	7184	7186	7189	7195	7207	7229	7257	7290	7330	7372
30.0	7113	7120	7120	7124	7134	7159	7193	7235	7287	7345
33.0	7010	7018	7021	7028	7041	7066	7102	7151	7217	7295
36.0	6864	6883	6894	6907	6927	6955	6996	7053	7138	7240
39.0	6651	6687	6718	6752	6792	6832	6884	6955	7064	7195
42.0	6343	6408	6473	6543	6618	6686	6764	6858	6988	7137
45.0	5882	5982	6097	6225	6360	6483	6608	6735	6858	6991
48.0	5284	5412	5575	5760	5960	6167	6366	6545	6639	6730
51.0	4562	4691	4884	5119	5384	5695	5997	6263	6362	6443
54.0	3856	3974	4141	4368	4659	5101	5557	5969	6133	6252
57.0	3240	3331	3433	3608	3887	4441	5050	5638	5985	6263
60.0	2719	2792	2831	2951	3199	3779	4469	5201	5882	6488
63.0	2247	2305	2304	2384	2608	3168	3891	4735	5823	6830
66.0	1802	1858	1836	1894	2094	2604	3310	4200	5591	6897

C Range: 0 - 360DEG
 C Interval: 5.0DEG
 Test Speed: HIGH
 Temperature: 25.3DEG
 Operators: DAMIN
 Test Date: 07 October 2023

γ Range: 0 - 180DEG
 γ Interval: 1.0DEG
 Test System: GO-2000B_V1 SYSTEM V2.00.446
 Humidity: 65.0%
 Test Distance: 7.850m [K=1.0000]
 Remarks:

Photometric Data Table [cd]

69.0	1306	1379	1381	1451	1641	2066	2675	3476	4854	6159
72.0	830.1	906.5	951.5	1047	1225	1542	1986	2569	3576	4539
75.0	539.1	584.3	632.5	718.5	858.1	1079	1376	1755	2368	2970
78.0	346.4	374.3	405.8	460.8	548.4	683.8	865.2	1097	1457	1820
81.0	192.4	208.7	224.0	251.2	295.6	360.9	454.9	583.8	803.0	1033
84.0	61.44	72.83	79.75	91.83	112.3	145.6	192.6	255.5	352.9	457.9
87.0	15.65	19.40	19.01	18.85	20.12	23.32	30.82	44.28	71.84	103.9
90.0	5.731	6.007	6.376	6.950	7.783	9.066	10.62	12.41	14.43	16.56
93.0	6.917	7.193	7.669	8.396	9.424	10.94	12.76	14.81	17.14	19.52
96.0	8.284	8.583	9.135	9.975	11.15	12.86	14.89	17.15	19.71	22.27
99.0	9.874	10.22	10.89	11.87	13.21	15.11	17.33	19.79	22.51	25.24
102.0	11.59	12.00	12.80	13.94	15.46	17.53	19.90	22.50	25.29	28.09
105.0	13.47	13.92	14.82	16.09	17.75	19.97	22.49	25.20	27.98	30.75
108.0	15.45	15.94	16.93	18.33	20.12	22.50	25.16	27.97	30.69	33.38
111.0	17.53	18.05	19.13	20.62	22.52	24.96	27.67	30.51	33.28	35.99
114.0	19.69	20.23	21.37	22.93	24.89	27.38	30.13	32.99	35.74	38.42
117.0	21.95	22.51	23.67	25.24	27.20	29.68	32.41	35.25	37.98	40.64
120.0	24.29	24.84	25.95	27.45	29.34	31.76	34.41	37.18	39.85	42.44
123.0	26.67	27.19	28.17	29.53	31.26	33.52	36.02	38.65	41.17	43.66
126.0	29.03	29.50	30.33	31.49	32.99	35.02	37.30	39.72	42.09	44.44
129.0	31.19	31.61	32.34	33.36	34.66	36.35	38.27	40.35	42.52	44.73
132.0	33.26	33.63	34.27	35.15	36.25	37.60	39.14	40.85	42.70	44.65
135.0	35.30	35.62	36.19	36.94	37.85	38.84	39.99	41.30	42.90	44.64
138.0	37.29	37.55	38.04	38.67	39.42	40.16	41.02	42.05	43.36	44.84
141.0	39.18	39.36	39.81	40.40	41.06	41.64	42.30	43.09	44.12	45.32
144.0	41.05	41.13	41.49	41.98	42.56	43.07	43.66	44.36	45.28	46.33
147.0	42.80	42.80	43.04	43.40	43.86	44.30	44.83	45.47	46.32	47.27
150.0	44.49	44.40	44.54	44.81	45.18	45.59	46.10	46.70	47.45	48.27
153.0	46.19	46.04	46.13	46.35	46.68	47.06	47.51	48.06	48.71	49.43
156.0	48.09	47.92	47.96	48.12	48.37	48.66	49.02	49.48	50.09	50.77
159.0	50.52	50.34	50.36	50.47	50.66	50.85	51.12	51.48	52.05	52.71
162.0	52.94	52.80	52.79	52.86	53.00	53.14	53.37	53.69	54.23	54.86
165.0	55.48	55.28	55.19	55.17	55.22	55.33	55.54	55.85	56.40	57.02
168.0	57.43	57.26	57.18	57.16	57.20	57.24	57.38	57.63	58.13	58.72
171.0	59.16	59.02	58.98	58.99	59.05	59.13	59.29	59.54	59.93	60.41
174.0	60.60	60.56	60.52	60.51	60.56	60.68	60.87	61.14	61.51	61.97
177.0	60.99	60.99	61.02	61.09	61.19	61.33	61.53	61.79	62.14	62.55
180.0	62.41	62.47	62.51	62.57	62.65	62.78	62.95	63.18	63.47	63.82
G/C	150.0	155.0	160.0	165.0	170.0	175.0	180.0	185.0	190.0	195.0
0.0	7004	7009	7011	7008	6985	6960	6939	6938	6944	6953
3.0	7053	7051	7045	7033	7002	6967	6936	6927	6925	6925
6.0	7095	7089	7079	7062	7023	6980	6940	6921	6908	6897
9.0	7142	7132	7117	7094	7048	6998	6949	6919	6894	6870
12.0	7190	7179	7162	7134	7082	7024	6964	6922	6882	6843
15.0	7242	7232	7214	7185	7126	7059	6989	6932	6876	6818
18.0	7296	7291	7275	7246	7185	7111	7031	6960	6886	6808
21.0	7350	7354	7346	7321	7262	7186	7099	7011	6916	6812
24.0	7392	7415	7425	7415	7364	7289	7195	7089	6969	6836
27.0	7414	7463	7499	7513	7479	7415	7323	7203	7059	6895
30.0	7407	7487	7557	7604	7600	7559	7478	7348	7182	6985
33.0	7383	7499	7608	7691	7716	7696	7627	7496	7317	7093
36.0	7357	7513	7660	7778	7820	7808	7741	7612	7427	7188
39.0	7343	7533	7711	7853	7897	7880	7804	7670	7478	7229
42.0	7301	7506	7699	7854	7920	7921	7852	7695	7474	7197
45.0	7141	7356	7571	7761	7898	7967	7948	7768	7503	7171
48.0	6847	7094	7365	7631	7870	8038	8097	7927	7638	7255
51.0	6550	6837	7166	7503	7837	8099	8242	8133	7875	7487
54.0	6383	6688	7033	7394	7776	8100	8316	8319	8159	7829
57.0	6503	6765	7027	7297	7650	7978	8237	8389	8386	8184
60.0	6967	7099	7134	7152	7381	7640	7896	8181	8347	8313
63.0	7594	7496	7172	6801	6845	6988	7195	7512	7768	7869
66.0	7860	7521	6850	6113	5998	6038	6189	6440	6681	6838
69.0	7115	6718	5972	5152	4959	4920	4989	5102	5243	5381
72.0	5266	5070	4619	4088	3898	3796	3773	3842	3957	4093
75.0	3462	3536	3455	3275	3047	2833	2692	2859	3083	3291
78.0	2138	2283	2338	2309	2104	1905	1793	2130	2509	2800
81.0	1244	1368	1439	1455	1304	1172	1135	1581	2045	2371
84.0	560.2	647.6	712.8	746.5	657.8	581.0	568.6	886.0	1213	1442
87.0	137.4	172.9	200.6	214.4	174.4	133.8	112.1	194.3	284.9	353.7
90.0	18.73	20.86	22.88	24.71	26.04	27.19	28.25	29.66	30.90	31.80
93.0	21.83	23.65	25.36	27.05	29.26	31.29	32.92	33.52	33.54	33.04
96.0	24.67	26.19	27.63	29.25	32.25	35.20	37.63	38.21	37.95	37.01
99.0	27.81	29.51	31.14	32.98	36.33	39.60	42.27	42.84	42.45	41.29
102.0	30.75	32.65	34.52	36.62	40.29	43.85	46.72	47.27	46.76	45.39

C Range: 0 - 360DEG
C Interval: 5.0DEG
Test Speed: HIGH
Temperature:25.3DEG
Operators:DAMIN
Test Date:07 October 2023

γ Range: 0 - 180DEG
γ Interval: 1.0DEG
Test System: GO-2000B_V1 SYSTEM V2.00.446
Humidity:65.0%
Test Distance:7.850m [K=1.0000]
Remarks:

Photometric Data Table [cd]

105.0	33.42	35.45	37.52	39.86	43.82	47.65	50.71	51.24	50.61	49.06
108.0	35.97	38.03	40.18	42.61	46.74	50.74	53.95	54.53	53.90	52.29
111.0	38.59	40.61	42.69	45.09	49.24	53.28	56.55	57.23	56.69	55.17
114.0	40.97	42.95	44.99	47.33	51.34	55.27	58.49	59.30	58.98	57.69
117.0	43.16	45.11	47.09	49.34	53.12	56.84	59.92	60.88	60.80	59.81
120.0	44.90	46.84	48.80	50.98	54.55	58.05	60.99	62.05	62.15	61.41
123.0	46.05	48.02	50.02	52.21	55.53	58.78	61.51	62.63	62.88	62.34
126.0	46.75	48.77	50.81	52.99	56.03	58.97	61.47	62.67	63.11	62.79
129.0	46.94	48.91	50.91	53.04	55.89	58.64	61.02	62.33	62.94	62.85
132.0	46.66	48.61	50.62	52.76	55.45	58.05	60.30	61.61	62.30	62.35
135.0	46.50	48.34	50.29	52.36	54.94	57.42	59.55	60.70	61.28	61.33
138.0	46.47	48.15	49.98	51.95	54.50	56.94	59.00	59.86	60.19	60.11
141.0	46.71	48.25	49.98	51.88	54.39	56.79	58.76	59.33	59.39	59.13
144.0	47.48	48.51	49.74	51.27	53.95	56.62	58.85	59.23	59.04	58.57
147.0	48.30	49.14	50.17	51.55	54.24	56.95	59.22	59.51	59.21	58.65
150.0	49.15	49.81	50.68	51.94	54.70	57.53	59.91	60.20	59.87	59.26
153.0	50.19	50.68	51.39	52.54	55.29	58.15	60.57	60.90	60.60	60.01
156.0	51.49	51.91	52.55	53.61	56.27	59.03	61.40	61.74	61.47	60.92
159.0	53.41	53.83	54.44	55.41	57.75	60.17	62.23	62.51	62.24	61.70
162.0	55.53	55.94	56.50	57.34	59.33	61.37	63.08	63.25	62.95	62.43
165.0	57.67	58.06	58.54	59.25	60.89	62.56	63.94	64.04	63.74	63.25
168.0	59.34	59.72	60.17	60.81	62.25	63.70	64.88	64.90	64.57	64.05
171.0	60.98	61.60	62.29	63.06	64.15	65.14	65.88	65.78	65.47	64.90
174.0	62.49	63.05	63.67	64.36	65.35	66.24	66.89	66.70	66.25	65.67
177.0	63.01	63.48	64.02	64.62	65.51	66.33	66.93	66.82	66.46	65.98
180.0	64.20	64.62	65.06	65.51	66.01	66.43	66.68	66.51	66.18	65.76
G/C	200.0	205.0	210.0	215.0	220.0	225.0	230.0	235.0	240.0	245.0
0.0	6959	6965	6969	6973	6975	6977	6981	6984	6986	6986
3.0	6921	6917	6912	6906	6900	6894	6891	6888	6885	6880
6.0	6882	6867	6851	6833	6815	6799	6785	6773	6761	6747
9.0	6842	6812	6782	6750	6718	6687	6661	6637	6615	6591
12.0	6797	6749	6700	6650	6602	6556	6517	6481	6447	6412
15.0	6752	6684	6614	6544	6476	6411	6356	6305	6259	6214
18.0	6718	6624	6529	6435	6345	6260	6187	6122	6063	6008
21.0	6694	6571	6447	6327	6213	6106	6016	5935	5864	5798
24.0	6685	6528	6370	6221	6080	5951	5846	5754	5673	5597
27.0	6704	6504	6306	6125	5957	5807	5686	5582	5491	5404
30.0	6747	6497	6250	6036	5842	5670	5536	5422	5322	5218
33.0	6806	6500	6199	5949	5726	5533	5384	5258	5144	5015
36.0	6863	6514	6165	5879	5623	5399	5221	5067	4927	4770
39.0	6892	6524	6152	5829	5531	5261	5036	4837	4657	4474
42.0	6860	6494	6117	5765	5427	5109	4825	4570	4343	4144
45.0	6796	6394	5984	5605	5240	4893	4562	4261	3999	3801
48.0	6797	6304	5806	5375	4971	4595	4236	3916	3647	3467
51.0	6943	6336	5714	5179	4687	4245	3871	3561	3316	3168
54.0	7223	6508	5750	5069	4441	3893	3505	3215	3013	2906
57.0	7576	6801	5935	5078	4269	3569	3161	2893	2735	2650
60.0	7800	7069	6185	5157	4149	3270	2840	2592	2473	2389
63.0	7576	7053	6319	5206	4057	3027	2572	2325	2221	2128
66.0	6793	6550	6068	5004	3846	2779	2326	2082	1976	1876
69.0	5569	5621	5438	4530	3481	2483	2072	1841	1725	1591
72.0	4321	4451	4388	3705	2891	2101	1769	1565	1440	1268
75.0	3333	3269	3084	2637	2132	1644	1389	1205	1068	913.3
78.0	2603	2266	1869	1571	1302	1074	940.6	845.0	770.4	667.4
81.0	2019	1508	971.4	754.0	622.2	552.4	509.7	490.7	480.6	436.9
84.0	1193	835.8	466.3	336.1	270.6	250.4	243.7	252.0	264.5	251.8
87.0	299.5	217.3	130.7	101.5	86.77	81.65	76.40	74.70	75.38	77.19
90.0	31.83	31.41	30.62	29.58	28.30	26.83	25.42	23.79	21.86	18.92
93.0	32.02	30.65	29.01	27.39	25.58	23.56	21.02	18.45	16.06	14.33
96.0	35.55	33.72	31.69	29.92	28.05	26.02	23.43	20.81	18.36	16.52
99.0	39.50	37.34	35.00	33.11	31.17	29.12	26.52	23.89	21.40	19.40
102.0	43.31	40.85	38.25	36.27	34.33	32.30	29.77	27.20	24.73	22.62
105.0	46.70	43.96	41.14	39.12	37.21	35.28	32.90	30.49	28.14	25.98
108.0	49.77	46.84	43.87	41.84	39.98	38.16	35.97	33.75	31.56	29.41
111.0	52.67	49.75	46.78	44.75	42.90	41.12	39.08	37.03	34.99	32.89
114.0	55.42	52.70	49.88	47.84	45.94	44.12	42.16	40.21	38.28	36.26
117.0	57.85	55.43	52.83	50.78	48.81	46.91	45.02	43.17	41.37	39.49
120.0	59.72	57.55	55.17	53.18	51.24	49.37	47.54	45.78	44.11	42.46
123.0	60.83	58.85	56.66	54.87	53.13	51.42	49.69	48.04	46.51	45.17
126.0	61.44	59.61	57.57	55.90	54.27	52.71	51.17	49.75	48.49	47.55
129.0	61.71	60.07	58.19	56.50	54.85	53.33	52.10	51.07	50.24	49.69
132.0	61.45	60.10	58.46	56.84	55.27	53.85	52.94	52.28	51.84	51.61
135.0	60.76	59.81	58.60	57.18	55.76	54.52	53.87	53.49	53.32	53.32
138.0	59.87	59.38	58.67	57.60	56.49	55.50	55.04	54.80	54.74	54.83

C Range: 0 - 360DEG
 C Interval: 5.0DEG
 Test Speed: HIGH
 Temperature: 25.3DEG
 Operators: DAMIN
 Test Date: 07 October 2023

γ Range: 0 - 180DEG
 γ Interval: 1.0DEG
 Test System: GO-2000B_V1 SYSTEM V2.00.446
 Humidity: 65.0%
 Test Distance: 7.850m [K=1.0000]
 Remarks:

Photometric Data Table [cd]

141.0	59.07	58.88	58.56	57.94	57.26	56.63	56.29	56.09	56.01	56.08
144.0	58.58	58.58	58.52	58.24	57.91	57.58	57.37	57.22	57.12	57.11
147.0	58.63	58.64	58.65	58.59	58.51	58.40	58.25	58.09	57.96	57.89
150.0	59.16	59.10	59.08	59.14	59.19	59.22	59.06	58.88	58.71	58.63
153.0	59.89	59.81	59.78	59.86	59.95	60.00	59.84	59.64	59.46	59.41
156.0	60.79	60.70	60.62	60.61	60.60	60.58	60.47	60.35	60.27	60.31
159.0	61.55	61.41	61.29	61.21	61.14	61.08	61.01	60.96	60.95	61.06
162.0	62.21	62.02	61.85	61.74	61.65	61.58	61.48	61.41	61.41	61.58
165.0	62.99	62.75	62.55	62.42	62.33	62.28	62.22	62.20	62.22	62.36
168.0	63.77	63.52	63.29	63.15	63.05	62.98	62.92	62.89	62.90	62.96
171.0	64.58	64.29	64.03	63.86	63.74	63.64	63.52	63.43	63.37	63.36
174.0	65.32	64.99	64.69	64.44	64.22	64.02	63.82	63.65	63.52	63.44
177.0	65.63	65.29	64.96	64.64	64.35	64.08	63.83	63.60	63.41	63.27
180.0	65.43	65.09	64.74	64.35	63.97	63.61	63.31	63.05	62.82	62.59
G/C	250.0	255.0	260.0	265.0	270.0	275.0	280.0	285.0	290.0	295.0
0.0	6986	6986	6989	6992	6994	6992	6990	6989	6992	6995
3.0	6874	6869	6868	6870	6870	6869	6869	6871	6877	6885
6.0	6734	6724	6721	6720	6721	6719	6720	6723	6734	6748
9.0	6571	6554	6546	6542	6541	6538	6539	6545	6561	6582
12.0	6381	6356	6343	6337	6335	6332	6335	6344	6366	6394
15.0	6175	6143	6124	6113	6109	6105	6108	6120	6149	6188
18.0	5960	5921	5897	5882	5876	5872	5878	5895	5928	5973
21.0	5743	5698	5668	5648	5638	5635	5643	5664	5703	5755
24.0	5532	5479	5440	5415	5402	5399	5409	5435	5483	5546
27.0	5327	5263	5212	5176	5156	5154	5170	5205	5266	5342
30.0	5125	5044	4974	4922	4892	4894	4921	4971	5049	5143
33.0	4895	4789	4703	4641	4607	4612	4649	4714	4818	4940
36.0	4625	4498	4400	4331	4296	4306	4351	4431	4556	4703
39.0	4310	4172	4071	4004	3973	3984	4034	4120	4256	4419
42.0	3978	3845	3750	3691	3668	3679	3726	3810	3939	4101
45.0	3647	3532	3452	3405	3389	3393	3429	3499	3611	3761
48.0	3338	3250	3184	3146	3133	3135	3163	3221	3306	3432
51.0	3074	3018	2967	2937	2927	2928	2949	2993	3048	3142
54.0	2853	2834	2790	2759	2743	2752	2777	2816	2838	2892
57.0	2620	2620	2588	2564	2553	2570	2600	2636	2634	2658
60.0	2359	2360	2340	2330	2330	2340	2359	2383	2383	2407
63.0	2090	2086	2074	2073	2080	2085	2096	2113	2121	2150
66.0	1828	1814	1796	1790	1794	1800	1814	1837	1856	1896
69.0	1497	1435	1374	1336	1325	1356	1410	1480	1542	1620
72.0	1126	1017	952.6	921.0	918.4	933.9	976.6	1048	1162	1299
75.0	785.4	688.7	643.7	627.1	631.5	629.0	648.1	696.8	803.3	940.1
78.0	575.9	503.5	476.8	469.7	475.4	467.9	473.9	501.0	572.2	668.3
81.0	393.4	356.0	342.5	338.5	341.1	338.3	343.6	361.2	405.5	463.0
84.0	236.2	221.1	214.9	212.5	213.6	215.8	222.5	234.9	260.1	289.1
87.0	79.03	79.75	73.31	67.11	63.69	70.30	81.16	95.24	112.8	130.5
90.0	15.97	13.36	11.90	11.20	11.33	12.84	14.91	17.24	18.95	20.69
93.0	12.96	11.96	11.33	11.04	11.07	11.32	11.92	12.93	14.65	16.69
96.0	15.05	13.96	13.33	13.02	12.97	12.92	13.71	14.93	16.50	18.66
99.0	17.74	16.46	15.70	15.30	15.19	15.21	15.51	16.14	17.22	18.66
102.0	20.81	19.36	18.47	17.96	17.80	17.86	18.26	18.99	20.14	21.62
105.0	24.07	22.51	21.52	20.94	20.73	20.84	21.30	22.12	23.38	24.96
108.0	27.46	25.83	24.80	24.19	23.97	24.09	24.58	25.44	26.79	28.44
111.0	30.96	29.32	28.28	27.64	27.40	27.53	28.05	28.94	30.33	32.01
114.0	34.40	32.83	31.81	31.19	30.96	31.10	31.62	32.50	33.87	35.49
117.0	37.78	36.32	35.40	34.83	34.62	34.77	35.26	36.08	37.34	38.85
120.0	40.98	39.75	38.93	38.43	38.24	38.39	38.85	39.61	40.71	42.05
123.0	44.02	43.07	42.35	41.88	41.69	41.85	42.28	42.98	43.92	45.08
126.0	46.79	46.18	45.57	45.13	44.93	45.13	45.58	46.23	46.95	47.86
129.0	49.28	48.96	48.48	48.11	47.91	48.12	48.54	49.12	49.68	50.41
132.0	51.49	51.40	51.06	50.77	50.60	50.82	51.21	51.73	52.17	52.76
135.0	53.39	53.47	53.28	53.11	53.02	53.22	53.55	53.98	54.37	54.88
138.0	54.98	55.14	55.06	54.97	54.95	55.17	55.48	55.88	56.27	56.75
141.0	56.22	56.37	56.41	56.45	56.54	56.76	57.05	57.42	57.84	58.33
144.0	57.15	57.24	57.36	57.51	57.71	57.95	58.24	58.60	59.07	59.59
147.0	57.87	57.92	58.07	58.28	58.54	58.77	59.05	59.38	59.85	60.35
150.0	58.61	58.63	58.73	58.87	59.07	59.32	59.61	59.95	60.38	60.84
153.0	59.41	59.47	59.57	59.71	59.89	60.08	60.31	60.58	60.93	61.33
156.0	60.41	60.53	60.65	60.78	60.92	61.09	61.28	61.49	61.72	61.99
159.0	61.20	61.36	61.49	61.62	61.76	61.94	62.12	62.32	62.48	62.66
162.0	61.80	62.03	62.17	62.29	62.41	62.54	62.68	62.84	63.01	63.20
165.0	62.53	62.71	62.86	62.99	63.12	63.25	63.38	63.51	63.62	63.75
168.0	63.07	63.20	63.36	63.53	63.70	63.83	63.94	64.03	64.05	64.08
171.0	63.40	63.48	63.64	63.82	64.00	64.10	64.19	64.25	64.27	64.30
174.0	63.40	63.43	63.55	63.72	63.89	64.02	64.14	64.22	64.23	64.23

C Range: 0 - 360DEG
 C Interval: 5.0DEG
 Test Speed: HIGH
 Temperature:25.3DEG
 Operators:DAMIN
 Test Date:07 October 2023

γ Range: 0 - 180DEG
 γ Interval: 1.0DEG
 Test System: GO-2000B_V1 SYSTEM V2.00.446
 Humidity:65.0%
 Test Distance:7.850m [K=1.0000]
 Remarks:

Photometric Data Table [cd]

177.0	63.17	63.13	63.20	63.30	63.42	63.50	63.57	63.64	63.66	63.70
180.0	62.40	62.25	62.20	62.21	62.25	62.33	62.43	62.51	62.53	62.54
G/C	300.0	305.0	310.0	315.0	320.0	325.0	330.0	335.0	340.0	345.0
0.0	6998	6997	6996	6995	6998	7001	7004	7009	7011	7008
3.0	6893	6899	6905	6912	6923	6934	6946	6961	6972	6979
6.0	6764	6776	6790	6806	6828	6852	6877	6903	6926	6944
9.0	6607	6629	6654	6683	6719	6757	6796	6835	6870	6899
12.0	6427	6461	6500	6542	6593	6646	6700	6755	6805	6850
15.0	6233	6279	6331	6388	6455	6525	6596	6668	6736	6798
18.0	6026	6085	6150	6223	6307	6396	6487	6580	6669	6752
21.0	5818	5888	5967	6055	6156	6263	6374	6491	6606	6714
24.0	5619	5698	5786	5886	6003	6130	6265	6409	6552	6687
27.0	5430	5517	5613	5724	5856	6003	6161	6336	6511	6679
30.0	5248	5345	5451	5572	5721	5886	6067	6275	6487	6690
33.0	5071	5181	5299	5430	5591	5774	5977	6224	6478	6723
36.0	4860	4994	5135	5288	5463	5663	5890	6182	6486	6780
39.0	4598	4768	4947	5139	5339	5562	5817	6157	6511	6853
42.0	4289	4496	4722	4965	5205	5468	5762	6147	6541	6918
45.0	3950	4191	4464	4761	5057	5374	5716	6125	6538	6933
48.0	3607	3865	4168	4507	4858	5232	5627	6062	6499	6920
51.0	3290	3535	3840	4197	4596	5032	5495	5996	6496	6976
54.0	3000	3209	3492	3852	4316	4838	5401	6004	6600	7157
57.0	2731	2885	3131	3488	4042	4690	5397	6152	6878	7522
60.0	2475	2572	2775	3128	3808	4623	5518	6478	7369	8099
63.0	2216	2251	2411	2774	3654	4708	5832	6924	7875	8578
66.0	1965	1946	2075	2459	3587	4898	6212	7186	7927	8377
69.0	1718	1685	1804	2201	3487	4936	6311	7041	7467	7600
72.0	1453	1448	1574	1951	3201	4570	5804	6211	6303	6154
75.0	1100	1151	1304	1641	2635	3695	4617	4814	4752	4518
78.0	785.4	852.0	982.8	1225	1837	2495	3086	3323	3399	3332
81.0	530.3	568.0	635.8	757.4	1026	1343	1682	2063	2370	2538
84.0	318.7	324.7	340.7	379.5	445.0	564.9	758.4	1223	1666	1972
87.0	146.4	146.4	149.7	163.3	182.0	234.1	335.7	625.6	905.2	1098
90.0	22.52	23.38	25.39	29.51	37.58	49.02	64.16	92.10	117.7	134.7
93.0	18.93	21.23	23.44	25.43	26.89	27.97	28.66	29.01	28.90	28.26
96.0	18.32	20.34	22.42	24.48	26.32	27.99	29.48	31.06	32.17	32.55
99.0	20.43	22.78	25.24	27.61	29.26	30.70	32.04	34.03	35.65	36.54
102.0	23.42	25.69	28.09	30.45	32.30	34.01	35.65	37.85	39.66	40.71
105.0	26.82	29.05	31.38	33.67	35.47	37.18	38.88	41.35	43.47	44.80
108.0	30.32	32.38	34.51	36.61	38.37	40.11	41.90	44.60	46.98	48.56
111.0	33.86	35.72	37.61	39.50	41.18	42.90	44.76	47.62	50.19	51.96
114.0	37.27	38.98	40.73	42.51	44.17	45.90	47.78	50.66	53.24	54.99
117.0	40.51	42.15	43.85	45.60	47.31	49.10	50.98	53.70	56.06	57.59
120.0	43.57	45.17	46.86	48.61	50.37	52.17	54.01	56.47	58.53	59.75
123.0	46.44	48.02	49.71	51.47	53.19	54.90	56.58	58.72	60.44	61.33
126.0	49.00	50.58	52.31	54.08	55.62	57.09	58.49	60.26	61.61	62.18
129.0	51.38	52.93	54.63	56.33	57.65	58.83	59.89	61.26	62.22	62.47
132.0	53.57	55.00	56.56	58.09	59.17	60.09	60.87	61.95	62.63	62.63
135.0	55.58	56.77	58.07	59.33	60.23	60.97	61.58	62.49	63.00	62.81
138.0	57.36	58.30	59.31	60.29	61.01	61.62	62.12	62.94	63.35	63.03
141.0	58.89	59.63	60.39	61.12	61.69	62.16	62.56	63.30	63.63	63.21
144.0	60.14	60.66	61.18	61.67	62.15	62.58	62.92	63.56	63.77	63.26
147.0	60.86	61.30	61.72	62.12	62.56	62.95	63.27	63.79	63.91	63.35
150.0	61.32	61.78	62.22	62.64	63.05	63.40	63.65	64.10	64.18	63.62
153.0	61.77	62.26	62.76	63.23	63.66	64.00	64.24	64.57	64.54	63.94
156.0	62.31	62.74	63.22	63.71	64.24	64.70	65.04	65.37	65.32	64.70
159.0	62.89	63.23	63.62	64.07	64.62	65.14	65.57	65.99	66.06	65.58
162.0	63.42	63.67	63.96	64.30	64.81	65.31	65.76	66.20	66.35	66.06
165.0	63.91	64.10	64.34	64.64	65.09	65.57	66.01	66.50	66.76	66.64
168.0	64.14	64.30	64.51	64.80	65.21	65.66	66.11	66.67	67.05	67.11
171.0	64.36	64.46	64.62	64.86	65.24	65.68	66.16	66.79	67.29	67.54
174.0	64.25	64.32	64.46	64.67	64.99	65.40	65.88	66.56	67.18	67.63
177.0	63.75	63.87	64.02	64.22	64.46	64.76	65.12	65.73	66.32	66.80
180.0	62.59	62.76	62.97	63.23	63.50	63.82	64.17	64.61	65.07	65.54
G/C	350.0	355.0								
0.0	6993	6970								
3.0	6974	6961								
6.0	6949	6947								
9.0	6917	6927								
12.0	6881	6904								
15.0	6847	6886								
18.0	6820	6878								
21.0	6804	6882								

C Range: 0 - 360DEG
 C Interval: 5.0DEG
 Test Speed: HIGH
 Temperature: 25.3DEG
 Operators: DAMIN
 Test Date: 07 October 2023

γ Range: 0 - 180DEG
 γ Interval: 1.0DEG
 Test System: GO-2000B_V1 SYSTEM V2.00.446
 Humidity: 65.0%
 Test Distance: 7.850m [K=1.0000]
 Remarks:

Photometric Data Table [cd]

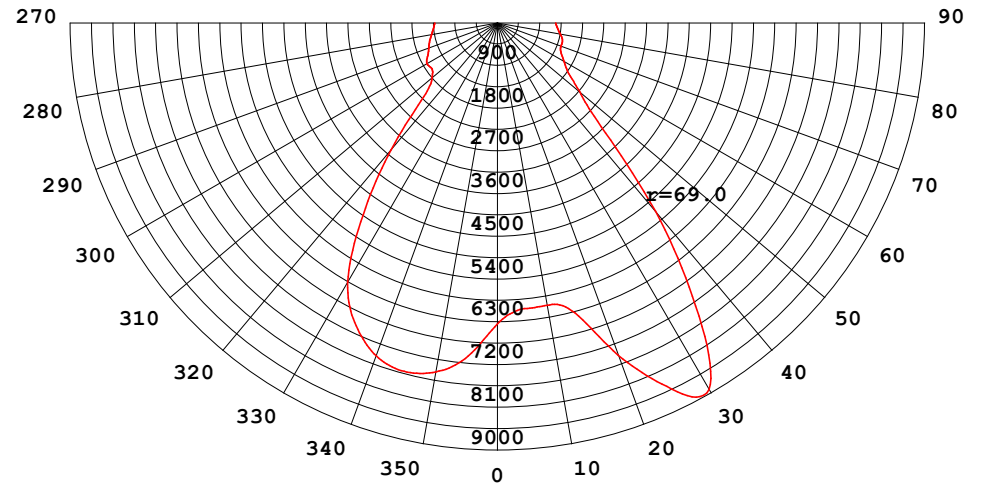
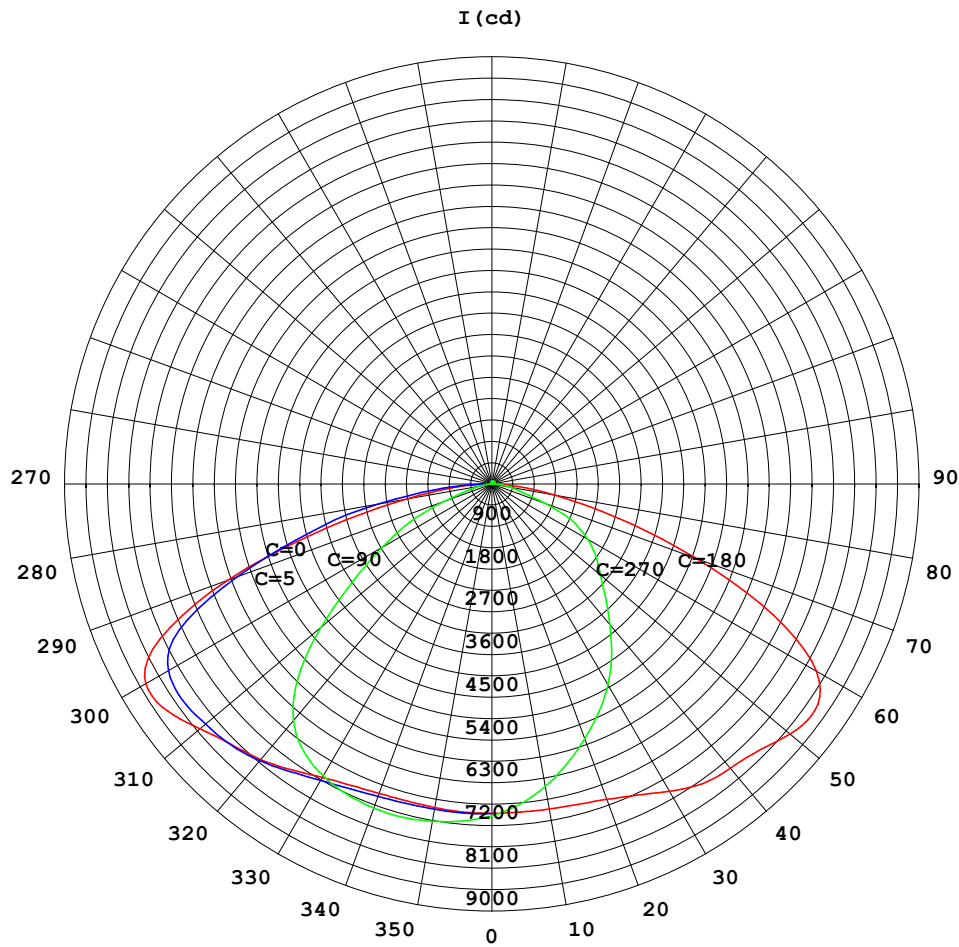
24.0	6801	6901
27.0	6820	6944
30.0	6860	7011
33.0	6926	7107
36.0	7018	7226
39.0	7120	7349
42.0	7210	7454
45.0	7253	7530
48.0	7282	7611
51.0	7388	7759
54.0	7603	7981
57.0	7959	8260
60.0	8458	8565
63.0	8785	8639
66.0	8403	8082
69.0	7463	7042
72.0	5936	5550
75.0	4307	4007
78.0	3165	2873
81.0	2412	2081
84.0	1873	1521
87.0	1028	796.1
90.0	128.4	107.1
93.0	26.96	25.07
96.0	31.62	29.71
99.0	35.84	34.03
102.0	40.11	38.36
105.0	44.34	42.67
108.0	48.24	46.65
111.0	51.72	50.15
114.0	54.71	53.09
117.0	57.16	55.42
120.0	59.14	57.25
123.0	60.51	58.49
126.0	61.19	59.09
129.0	61.32	59.15
132.0	61.27	58.94
135.0	61.24	58.67
138.0	61.25	58.42
141.0	61.28	58.28
144.0	61.28	58.26
147.0	61.43	58.54
150.0	61.83	59.14
153.0	62.24	59.75
156.0	63.05	60.65
159.0	64.12	61.93
162.0	64.95	63.24
165.0	65.79	64.41
168.0	66.52	65.47
171.0	67.22	66.52
174.0	67.62	67.31
177.0	66.94	66.87
180.0	65.98	66.41

C Range: 0 - 360DEG
C Interval: 5.0DEG
Test Speed: HIGH
Temperature:25.3DEG
Operators:DAMIN
Test Date:07 October 2023

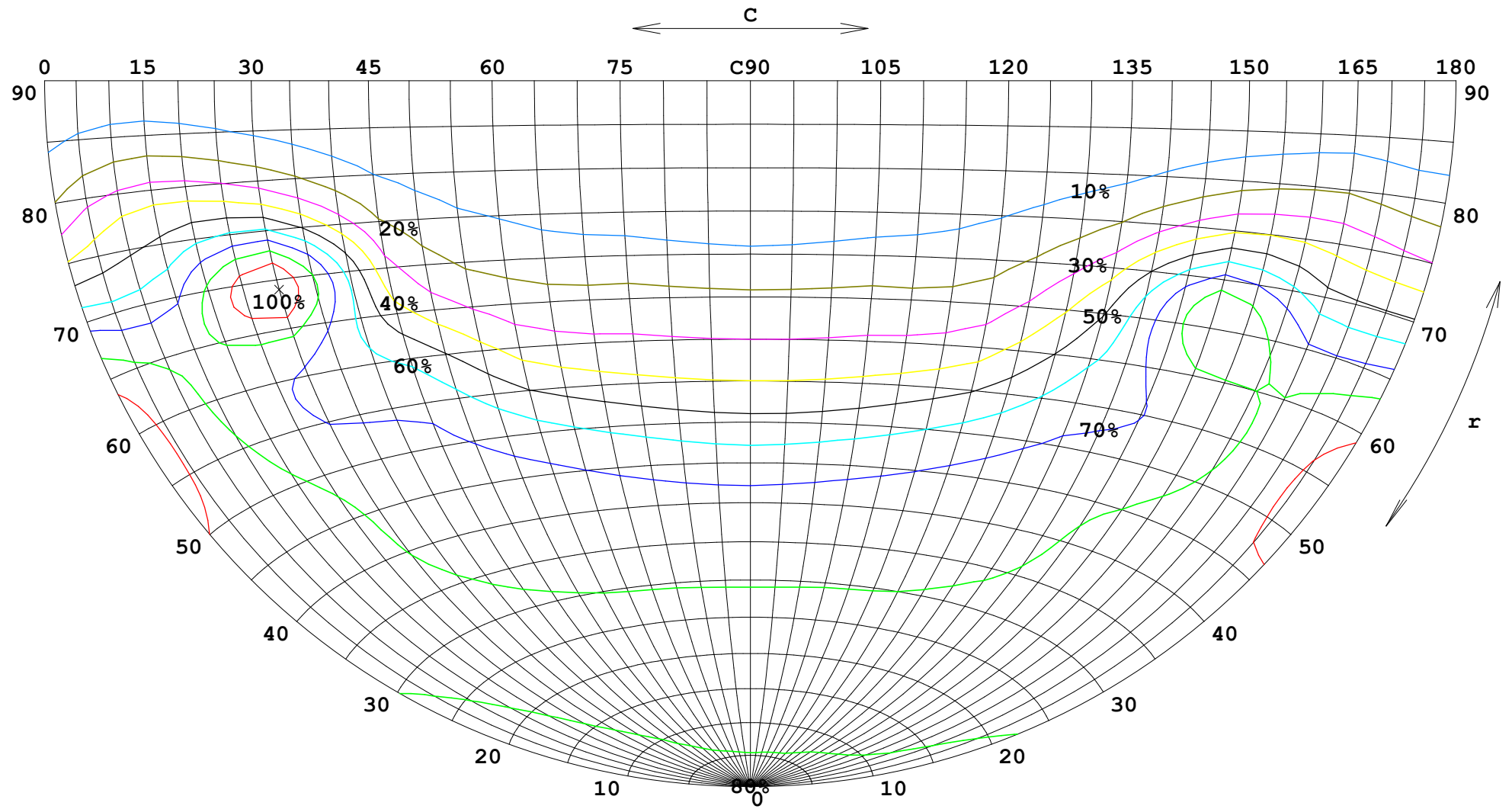
γ Range: 0 - 180DEG
γ Interval: 1.0DEG
Test System: GO-2000B_V1 SYSTEM V2.00.446
Humidity:65.0%
Test Distance:7.850m [K=1.0000]
Remarks:

FLUX DATA:

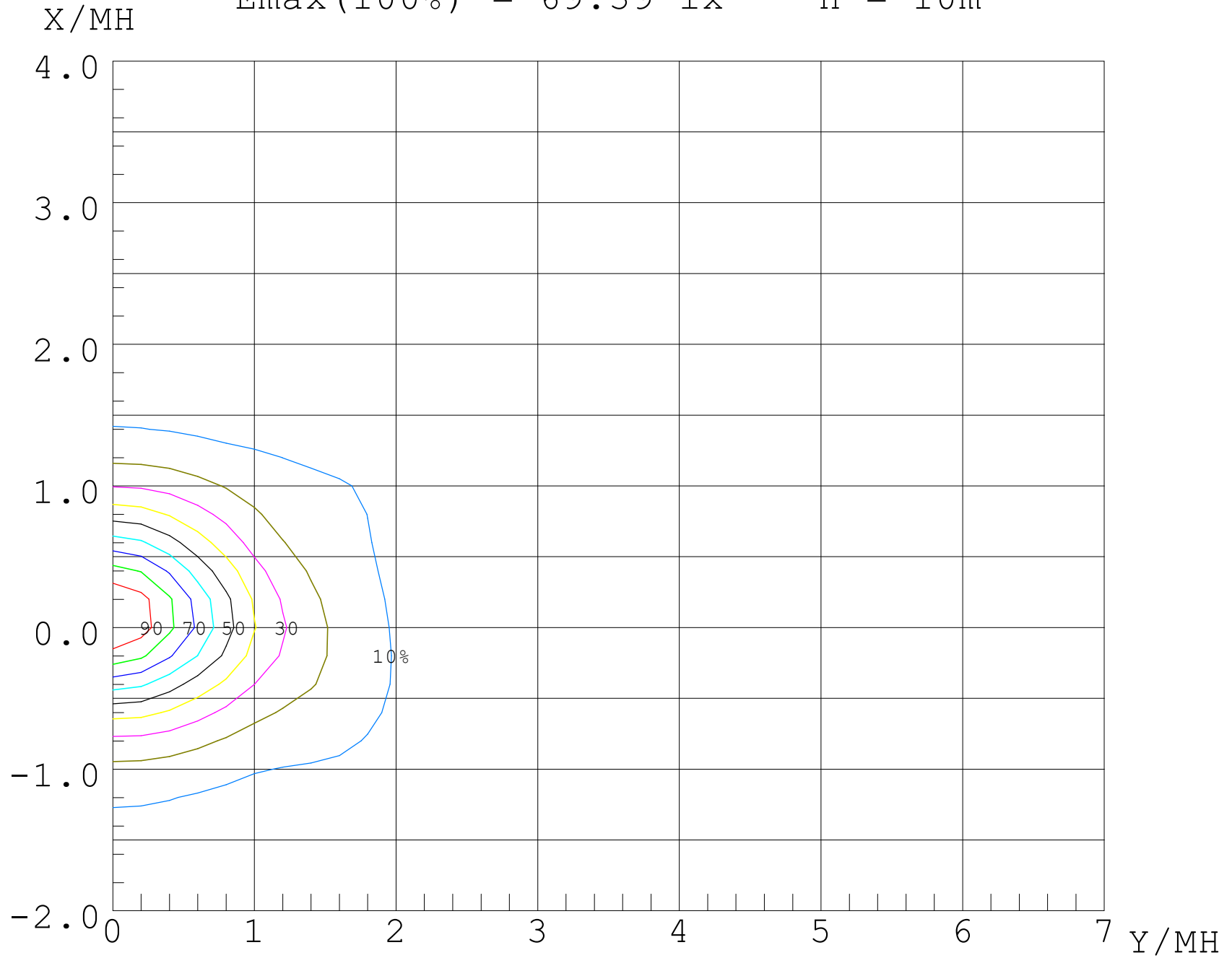
LOR: 100.0 %
 STREET DOWN: 14090 lm
 STREET UP: 113.4 lm
 HOUSE DOWN: 11978 lm
 HOUSE UP: 145.0 lm



$I_{max}(100\%) = 8919 \text{ cd}$



$E_{max}(100\%) = 69.39 \text{ lx}$ $H = 10\text{m}$



UF (%)

80

70

60

50

40

30

20

10

0

-2

-1

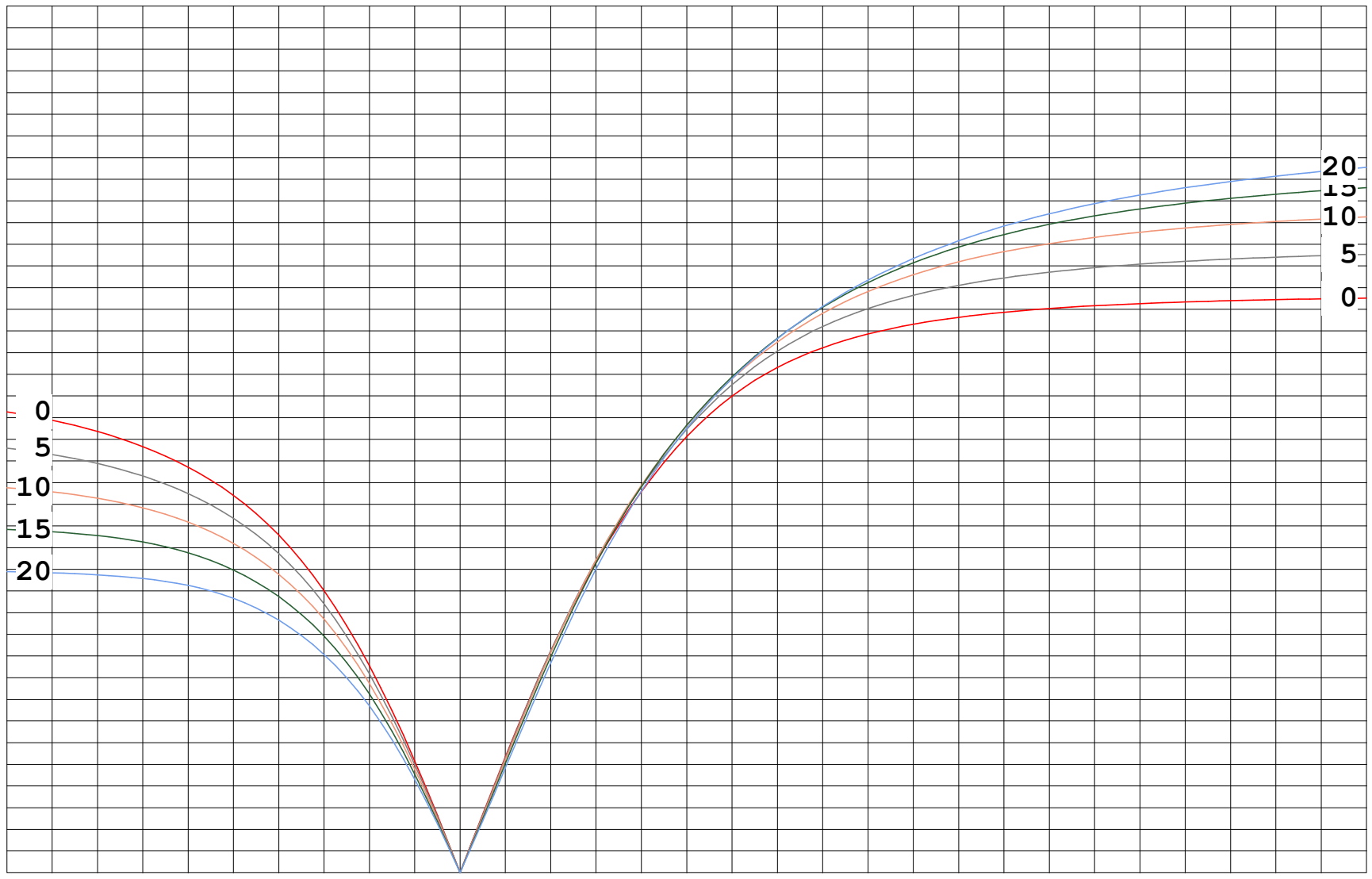
0

1

2

3

4 X/MH



0
5
10
15
20

20
15
10
5
0