

Available Models¹

12V | 18 LEDs/ft

- STN-B-A27K90-C3A-10B5M-12V
- STN-B-A30K90-C3A-10B5M-12V
- STN-B-A35K90-C3A-10B5M-12V
- STN-B-A40K90-C3A-10B5M-12V
- STN-B-A50K90-C3A-10B5M-12V
- STN-B-A65K90-C3A-10B5M-12V

12V | 36 LEDs/ft

- STN-B-A27K90-C3A-10C5M-12V
- STN-B-A30K90-C3A-10C5M-12V
- STN-B-A35K90-C3A-10C5M-12V
- STN-B-A40K90-C3A-10C5M-12V
- STN-B-A50K90-C3A-10C5M-12V
- STN-B-A65K90-C3A-10C5M-12V

24V | 18 LEDs/ft

- STN-B-A27K90-C6A-10B5M-24V
- STN-B-A30K90-C6A-10B5M-24V
- STN-B-A35K90-C6A-10B5M-24V
- STN-B-A40K90-C6A-10B5M-24V
- STN-B-A50K90-C6A-10B5M-24V

24V | 36 LEDs/ft

- STN-B-A27K90-C6A-10C5M-24V
- STN-B-A30K90-C6A-10C5M-24V
- STN-B-A35K90-C6A-10C5M-24V
- STN-B-A40K90-C6A-10C5M-24V
- STN-B-A50K90-C6A-10C5M-24V

SAMPLE PART NUMBER BREAKDOWN

STN-B-A27K90-C3A-10B5M-12V

Series	Strip Type	CCT	CRI	LED Type	LEDs/Segment	IP Rating	Width	LEDs/Meter	Length	Voltage
STN-B	A	27K	90	C	3	A	10	B	5M	12Vv
Non-weatherproof	Single White	27K: 2700K 30K: 3000K 35K: 3500K	90+	2835 SMD	3: 3 LEDs/seg 6: 6 LEDs/seg	IP20	10mm	B: 60 LEDs C: 120 LEDs	5 meters	12: 12 VDC 24: 24 VDC

Overview

This flexible LED strip light has a 90+ CRI rating, ensuring high-quality, precise color rendering. It emits natural illumination with an elegant finish, perfect for updating and enhancing any indoor space. Peel-and-stick 3M™ adhesive backing enables fast, easy mounting. Backed by a lifetime warranty.

Features

- 90+ CRI for accurate color rendering
- Ultra-bright output 2835 SMD LEDs
- 3M™ adhesive backing for surface mounting
- 0-100% PWM dimmable

Product Details

- 12V input for vehicle applications; 24V for longer runs
- Available in 18 LED/ft or 36 LED/ft densities
- Strip Width: 10mm (0.39in.)

Certifications and Compliances

- UL Listed - UL 2108 (IFDR)
- CE Compliant



Applications

- Ambient Home Lighting
- Cabinets
- Task Lighting
- Toe Kick Lighting
- Under-Cabinets

Warranty

- Lifetime warranty



White LED Strip Lights

High CRI LED Strip Light Specifications

SPECIFICATIONS				
Model STN-B-	AxK90-C3A-10B5M-12V	AxK90-C3A-10C5M-12V	AxK90-C6A-10B5M-24V	AxK90-C6A-10C5M-24V
PHOTOMETRIC				
Lumens per Foot	366 lm/ft	450 lm/ft	366 lm/ft	450 lm/ft
Efficacy	100 lm/W	107 lm/W	100 lm/W	107 lm/W
CCT	2700K, 3000K, 3500K, 4000K, 5000K, or 6500K (as ordered)			
CRI	90+			
Beam Angle	120°			
ELECTRICAL				
Wattage	60 Watts	69 Watts	60 Watts	69 Watts
Wattage per Foot	3.7 W/ft	4.2 W/ft	3.7 W/ft	4.2 W/ft
Current Draw	5A	5.8A	2.5A	2.9A
Current Draw per Foot	305 mA/ft	354 mA/ft	152 mA/ft	177 mA/ft
Operating Voltage	12 VDC		24 VDC	
Dimmer Type	PWM			
MECHANICAL				
LED Density	18 LEDs/ft	36 LEDs/ft	18 LEDs/ft	36 LEDs/ft
Max Run (Class 2)	14.8 ft (4.5 m)	13.1 ft (4 m)	24.6 ft (7.5 m)	21.3ft (6.5m)
Minimum Cut Length	50mm (1.97in.)	25mm (1.00in.)	100mm (3.90in.)	50mm (1.97in.)
LEDs per Segment	3		6	
Strip Width	10mm (0.39in.)			
Length	16.4ft (5m)			
LED Type	2835 SMD			
LED Lifetime	50000 hours			
ENVIRONMENTAL				
IP Rating	IP20			
Environmental Rating	Suitable for Dry Locations, Non-weatherproof			
Ambient Operating Temperature	-20 to 60°C (-4 to 140°F)			

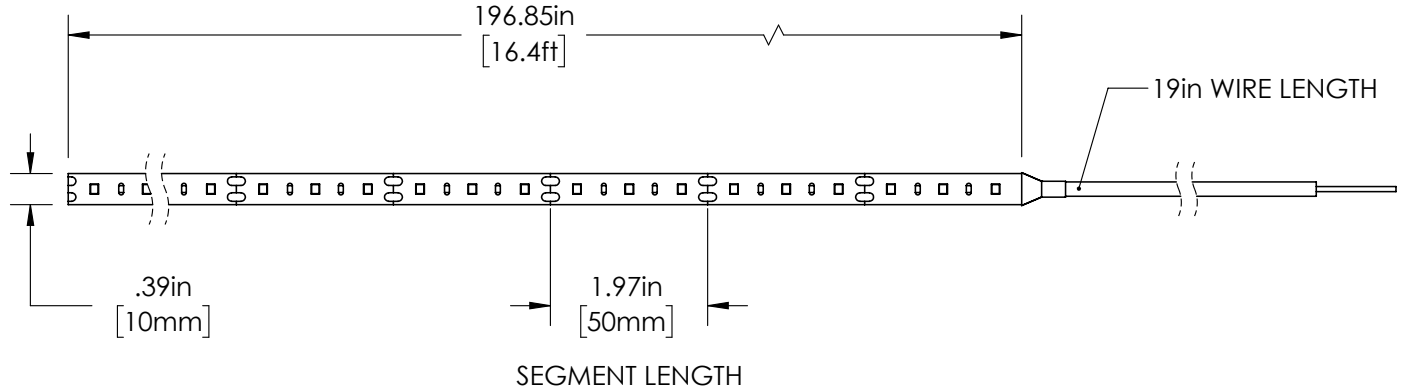


White LED Strip Lights

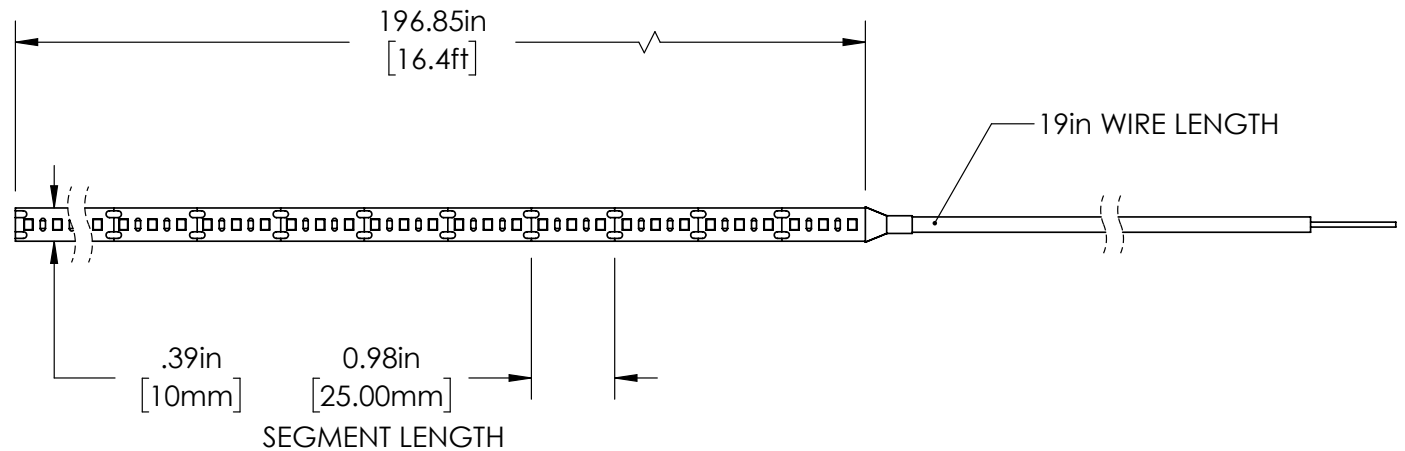
High CRI LED Strip Light Specifications

Dimensional Drawings

STN-B-AxK90-C3A-10B5M-12V

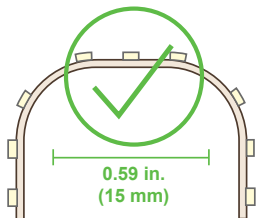


STN-B-AxK90-C3A-10C5M-12V



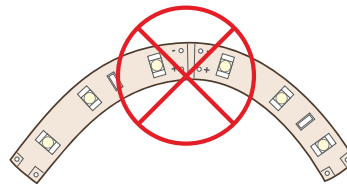
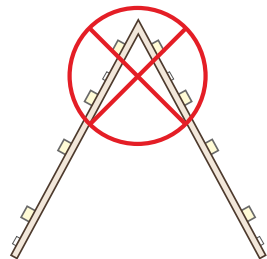
Note: Strip thickness -0.06in. (1.4mm)

Strip Flexibility



Bends less than 15mm will damage circuit traces and void warranty.

Bending strips at sharp angles will damage circuit traces and void warranty.



Bending strips on horizontal plane will damage circuit traces and void warranty.

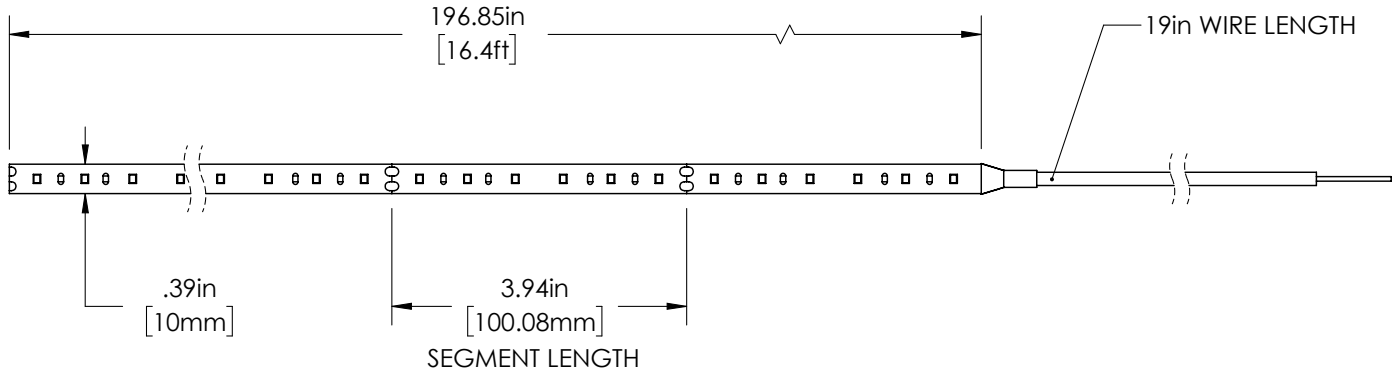


White LED Strip Lights

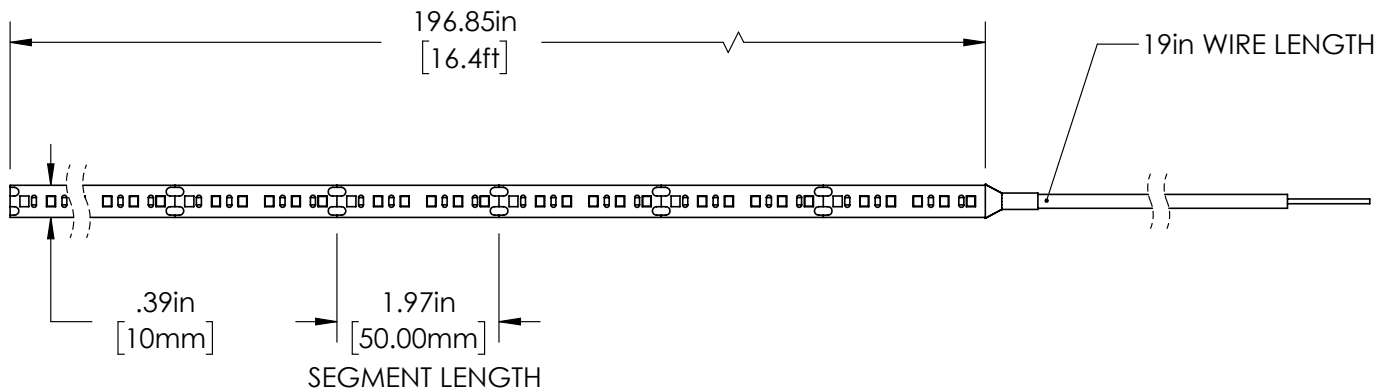
High CRI LED Strip Light Specifications

Dimensional Drawings

STN-B-AxK90-C6A-10B5M-24V

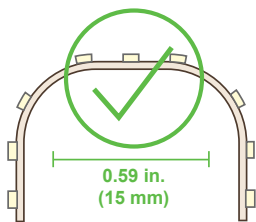


STN-B-AxK90-C6A-10C5M-24V



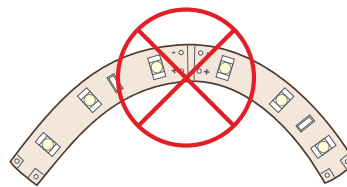
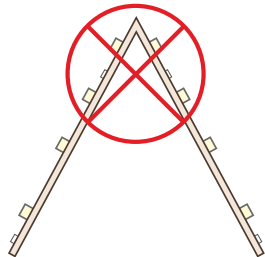
Note: Strip thickness -0.06in. (1.4mm)

Strip Flexibility



Bends less than 15mm will damage circuit traces and void warranty.

Bending strips at sharp angles will damage circuit traces and void warranty.



Bending strips on horizontal plane will damage circuit traces and void warranty.

