

AFTER-SALE SERVICE

Purchase Date	(Year)	(Month)	(Date)
Warranty Period	(24months)		
Purchase Store			

Please paste the store's stamp and guarantee barcode here, Please notice the purchase date should be confirmed when you buy the product.

WARRANTY SERVICE

Please follow the below solutions to confirm the defective problems before asking for warranty service.

Phenomenon	Solution
Separate bulb	Light off Defective lamp body: please connect a new lamp body with the original driver, if it works well, then it means the previous lamp body is defective, please cut down the power line of the defective lamp body for warranty.
	Light off Defective driver: please connect another new driver with the original lamp body, if it works well, then it means the previous driver is defective, please cut down the power line of the defective driver for warranty.
	Abnormal light Please connect suitable canbus decoder to solve the canbus problem.
	Flicking Please connect suitable canbus decoder to solve the canbus problem.
ALL in one bulb	Flicking If encounter the situation when lighting up the bulb for some times it do not work suddenly, and then turn off the power start it again work well, please change the dust cover with more space for heat dissipation to solve it.
	Flicking Please connect suitable canbus decoder to solve the canbus problem.
	Light off Please make sure of correct installation, if the lamp body is still not work, please cut down the power line of the defective lamp body for warranty.
	Abnormal light Please connect suitable canbus decoder to solve the canbus problem.
Flicking If encounter the situation when lighting up the bulb for some times it do not work suddenly, and then turn off the power start it again work well, please change the dust cover with more space for heat dissipation to solve it.	

Attention:

The following conditions are beyond warranty scope.

- Canbus problem:** when replacing the original halogen bulb with LED, some vehicles may have canbus flickering problems. Please connect suitable decoder to solve the problems.
- Man-made reason:** Man made reasons may lead to broken LED chips, chapped wire, or from users modifying the bulbs themselves.
- Installation Problem:** some vehicles may not install because of small installation space
- Natural Disaster:** damage because of irresistible natural disaster like earthquake, flood, etc.
- Intended for off-road and fog light applications.

WARRANTY SERVICE

Thanks for using our products!

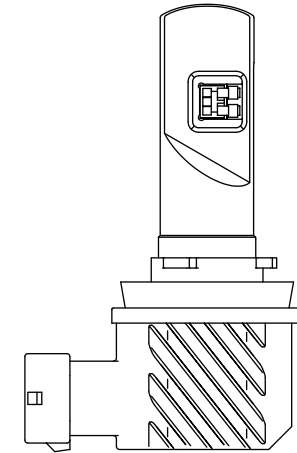
- The warranty for this product is 24 months.
- If the product is failure, please kindly follow the below steps, so that we could help to solve the problem for you at the shortest time.



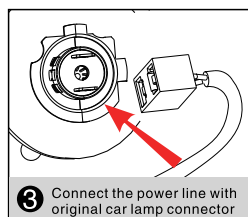
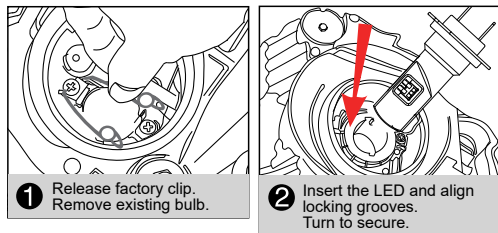
For after-sale service please show the code on bulb to us thanks.

superbrightleds.com

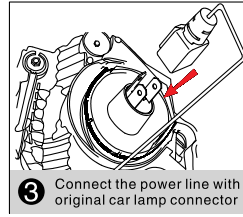
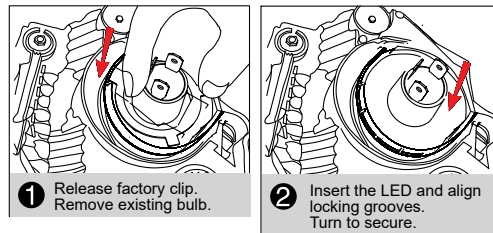
GTHL User Manual



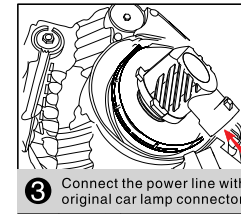
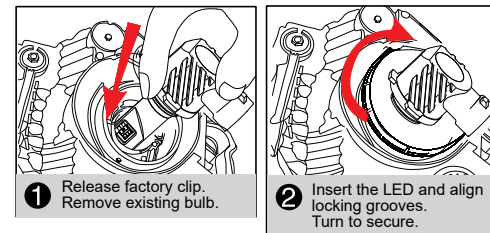
H1/H3/H7



H4/H13/H15/9004 / 9007

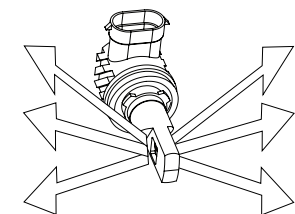


H8/H9/H10/H11/9005/9006/880/881



PRODUCT SPECIFICATION

Operating Voltage	DC9-40V
IP Rate	IP65
Light Source Model	5540
Color Temperature	6500K
Heat Dissipation Theory	Aviation aluminum ADC12
Operating Life	>30000hrs
Operating Temperature	-40°C~+80°C



For all reflector applications, the position of the diodes (LED chips) should always be in a side-to-side orientation.