

Important: Read all instructions prior to installation.

Wireless LED RGB Wall Switch for EZ Dimmer Series Controllers

Parts Included

- 1 - 868MHz RGB LED Dimmer Wall Switch 2 - Mounting Screws
1 - 3V CR2032 Battery

Wall Switch

1 On/Off/RGB Color/Brightness Push Dial

Push dial for remotely activating/controlling RGB light strips.

Single Press	Turns light on/off. If the receiver Controller Pairing Switch has been depressed, a single dial press on the Wall Switch pairs the Switch to the Controller.
Double Press	Increases or decreases LED intensity until you release, turning LED on will remember the last memory position
Left/Right Movement	During color mode, scrolls through RGB light strip colors. During dimming mode, controls LED intensity level
Hold Press	Increases LEDs to maximum intensity

2 Color Gradient

Visual key representing the specific dial colors.

3 Dimming Level

Visual key representing the dial brightness level.

Controller

4 Pairing Switch

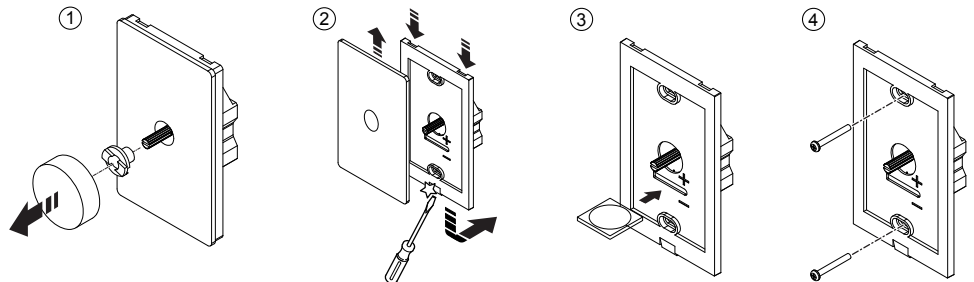
To Pair Wall Switch to Controller, push once and then push Wall switch. Lights will blink once to indicate linking. To unpair Wall Switch(es), push and hold until lights blink twice.

5 Master/Slave Jumper

Set Jumper to Master for main Controller. Master emits synchronization signal to Slave Controllers. Set Jumper to Slave to receive synchronization signal from Master Controller. Use Master for the first Controller in each zone. To achieve precise synchronization between Controllers in one zone, set additional Controllers to slave.

Wall Switch Instructions

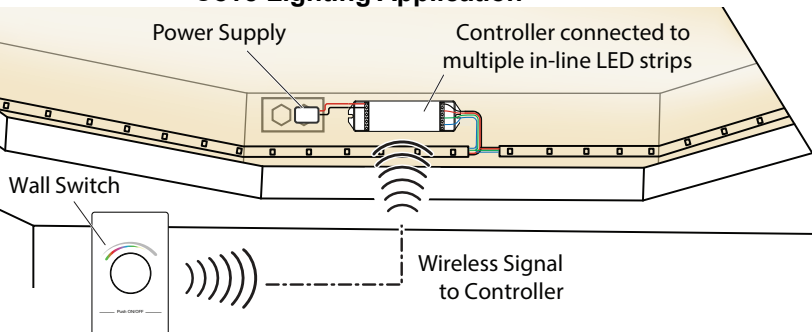
1. Pull off dial and collar from front plate.
2. Using a flat head screwdriver, pry rear switch housing away from front plate.
3. Insert battery with tray into slot, matching the polarity on the battery with the slot labels.
4. Fasten wall switch using mounting screws.
5. Reinstall front plate, collar and dial.



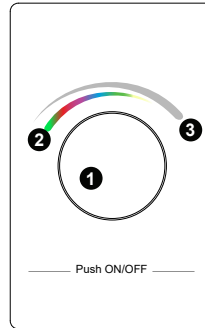
Cove Lighting Application

Operating the Wall Switch/Controller

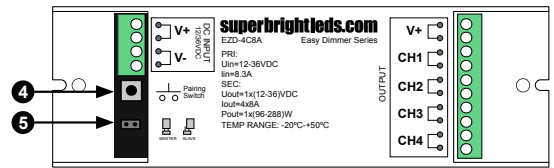
1. Press "Pairing Switch" button on the Controller. 4 Immediately press the Wall Switch to pair it to the Controller. The LED lights wired to the Controller will blink when the pairing is complete.
2. Multiple Wall Switches can be paired to a Controller, and can be paired to multiple Controllers. If multiple Controllers paired to a Wall Switch are not in sync, unpair and then pair until Controllers and lights are in sync.



EZD-RGB-WM



EZD-4C8A Controller



EZD-4C8A Controller		
Input Voltage	Current	Output Wattage
12~36 VDC	4 X 8A	384W(12V) 768W(24V) 1152W(36V)

EZD-RGB-WM Wall Switch	
Operating Voltage	3 VDC
Battery Size	CR2032
Operating Frequency	868 MHz
FCC ID#	2ACUQ2836

FCC Statement

This device complies with part 15 of the FCC Rules. Operation is subject to the following two conditions: (1) This device may not cause harmful interference, and (2) This device must accept any interference received, including interference that may cause undesired operation. Any changes or modifications in construction of this device which are not expressly approved by the party responsible for compliance could void the user's authority to operate the equipment.

Set-Up Instructions

Remote

1. Follow illustrated steps to remove the Battery Tray. Insert the 3V battery included with the Wall Switch.

Controller

1. Make sure power to the Controller is disconnected.
2. Using a small flathead screwdriver, loosen the labeled terminal screws visible on the top of the controller.
3. Matching light strip wires with labeled slots on the Controller, insert wires and tighten terminal screws. Be sure wire conductor, not wire insulation, is secured in terminal.
4. Turn power on and wait until light strip illuminates. If it does not come on, check light strips and wiring connections.

Safety

- DO NOT install with power applied to controller.
- DO NOT expose the Wall Switch or Controller to moisture.

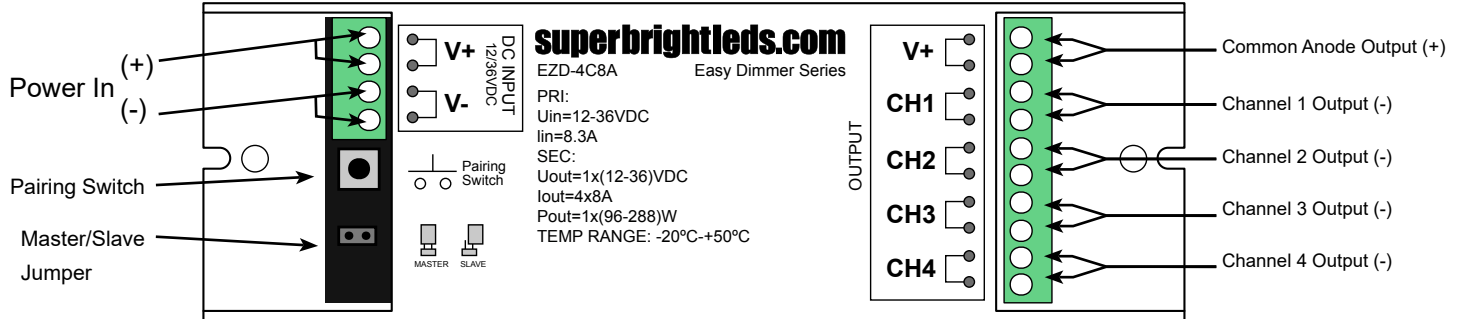


Important: Read all instructions prior to installation.

Wireless LED RGB Wall Switch for EZ Dimmer Series Controllers

Connection Diagram

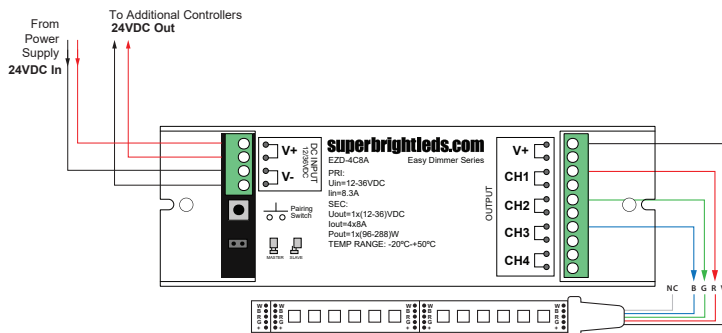
EZD-4C8A Controller



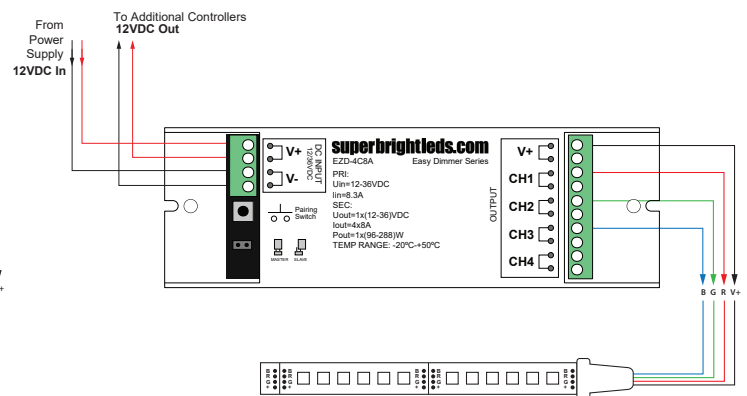
Note: CH1 is the Red Channel
CH2 is the Green Channel
CH3 is the Blue Channel
CH4 is not used

Example Diagrams

(1) RGB 24VDC Application / EZD-4C8A



(2) RGB 12VDC Application / EZD-4C8A



(3) Seperate RGB 12VDC Application / EZD-4C8A

