

**Important:** Read all instructions prior to installation.

## Linkable LED Light Bar

### Included Parts

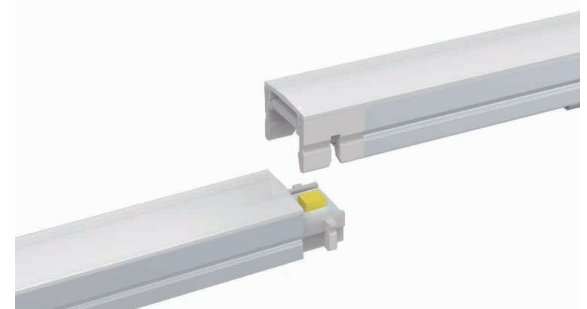
- 1 - Linkable LED Light Bar
- 1 - Mounting Clip Kit
- 1 - DC Connection Cable
- 1 - Endcap

### Optional Accessories

- LSLB-NWCC - Cross Connector
- LSLB-NWLC - L Connector (left)
- LSLB-NWRC - L Connector (right)
- LSLB-NWTMC - T Connector (4-way)
- LSLB-NWTLC - T Connector (3-way, left)
- LSLB-NWTRC - T Connector (3-way, right)
- LSLB-I06 - 6" Interconnect Cable
- LSLB-I12 - 12" Interconnect Cable
- LSLB-I36 - 36" Interconnect Cable
- LSLB-MC - Mounting Clip Kit

### Specifications

LSLB-NWx-12V	
Operating Voltage Range	12 VDC
Maximum Run	16.4 ft (5 m) or 10 light bars
IP Rating	IP20



### Safety and Notes

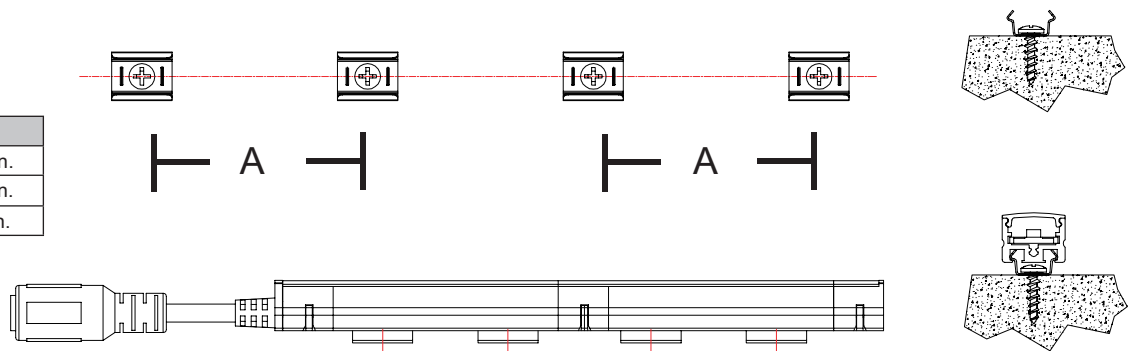
- Product should be installed in accordance with applicable national, state, and local building and electrical codes.
- Do not exceed the max run as listed in this manual.
- This product is for use in dry indoor locations only.
- Use only the approved connectors. Do not attempt to modify light bars.
- Do not cover the light or allow the light to be in contact with material such as cloth which may pose a fire hazard.
- Make certain to terminate each run with the provided endcap

## Installation / Mounting

### Clip Installation

Clip should be installed with a distance equal to approximately 80% of the light bar between each clip.

Model	A
LSLB-NW08-12V	6.5 in.
LSLB-NW12-12V	9.5 in.
LSLB-NW20-12V	16 in.



### Magnetic Installation

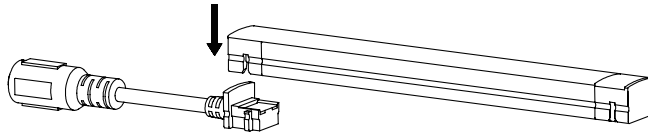


*Important: Read all instructions prior to installation.*

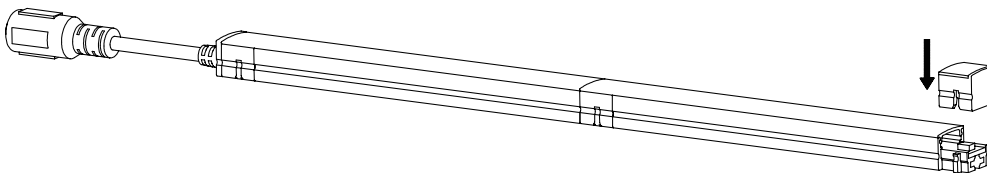
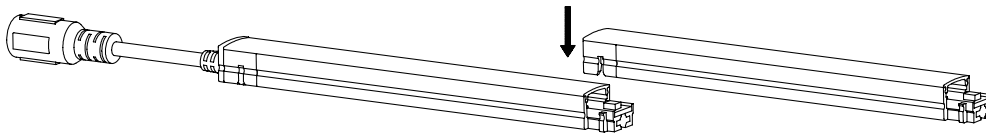
## Linkable LED Light Bar

### Installation / Linking

#### Single Light Bar



#### Multiple Light Bars\*



\*Note: Must not exceed max run. Use compatible connectors only.

