



DVEE Series

Selectable Voltage LED Driver Specifications

Project _____

Date _____ Type _____



Available Models

- DVEE-60W-S1224
- DVEE-96W-S1224
- DVEE-320W-S1224



Part Number Breakdown

Example: DVEE-60W-S1224

Series	Output Wattage	Output Voltage
DVEE	60W [60 W]	S1224 [Selectable 12 or 24 VDC]
	96W [96 W]	
	320W [320 W]	

Features

- Selectable 12 VDC or 24 VDC constant voltage output
- 100-277 VAC input
- Class 2 Power Supply (60W)
- Class P Power Supply (320W)
- IP65 waterproof rated steel housing
- Built-in short-circuit, overload, over-voltage, over-temperature, and surge protection
- Ambient operating temperature range: -40°-122° F (-40°-50° C)

Application

These constant voltage output drivers offer a versatile solution for the remote mounting of low voltage LED lights such as strips and light bars. They offer selectable 12 or 24 VDC constant voltage output.

Certifications and Compliances

These are UL Listed in compliance with UL 8750 (FKSZ).



Warranty

Five (5) Year Warranty

T 866.811.5550
 F 314.972.6202
 email: commercial-sales@superbrightleds.com
 www.diode-drive.com
 www.superbrightleds.com/cat/power-supplies



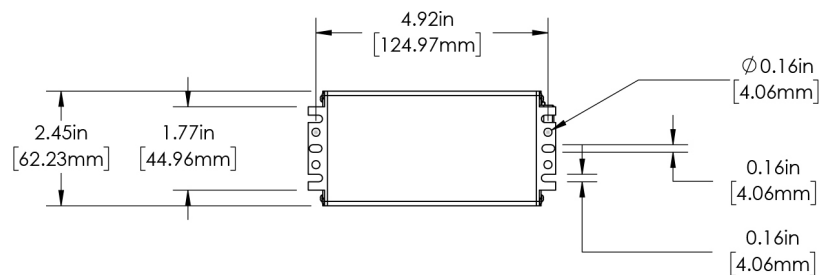
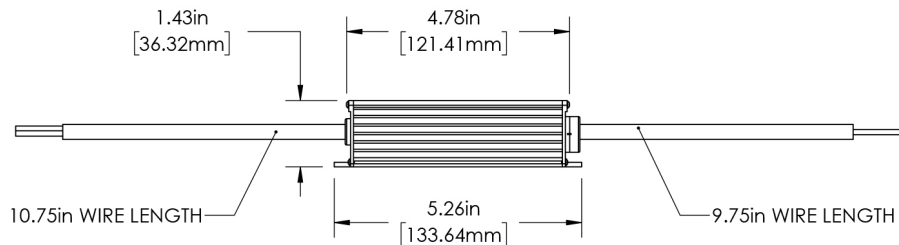
Rev V1 Date: 02/26/2024
 Specifications are subject to change without notice.
 Printed in the U.S.A.

DVEE Series

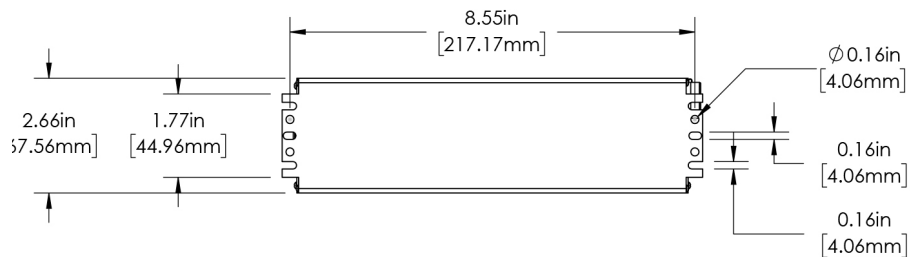
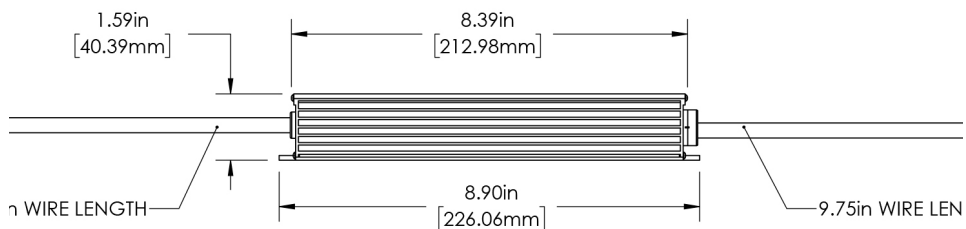
Selectable Voltage LED Driver Specifications

Dimensional Drawings

DVEE-60W/90W-S1224



DVEE-320W-S1224



T 866.811.5550

F 314.972.6202

email: commercial-sales@superbrightleds.com

www.diodedrive.com

www.superbrightleds.com/cat/power-supplies



DVEE Series

Selectable Voltage LED Driver Specifications

Specifications

Model DVEE-		60W-S1224	96W-S1224	320W-S1224
Output Wattage		60 W	96 W	216 W (12 VDC) 320 W (24 VDC)
Input Wattage (max)		70 W	120 W	360 W
Input Current		700 mA	1.2 A	3.5 A
Maximum Output Current	12 VDC	5 A	8 A	18 A
	24 VDC	2.5 A	4 A	13.3 A
Efficiency		up to 87%	up to 88%	up to 92%
Input Voltage		100-277 VAC		
Output Voltage		12/24 VDC (selectable)		
Power Factor		≥0.95		
Surge Protection	Differential	6 kV		
	Common	10 kV		
Short-circuit Protection		yes		
Overloading Protection		yes		
Overvoltage Protection		yes		
Over-temperature Protection		yes		
Operating Humidity		10-90% relative humidity, non-condensing		
Ambient Operating Temperature		-40°-122° F (-40°-50° C)		
IP Rating		IP65		
Dimming		none		
UL Standard		UL 8750		
Wire Gauge	Input	18 AWG		
	Output	18 AWG	16 AWG	14 AWG
MTBF		200,000 hours		

T 866.811.5550

F 314.972.6202

email: commercial-sales@superbrightleds.com

www.diodedrive.com

www.superbrightleds.com/cat/power-supplies