

Light efficiency:



Output: 10239 lm

Light quality:



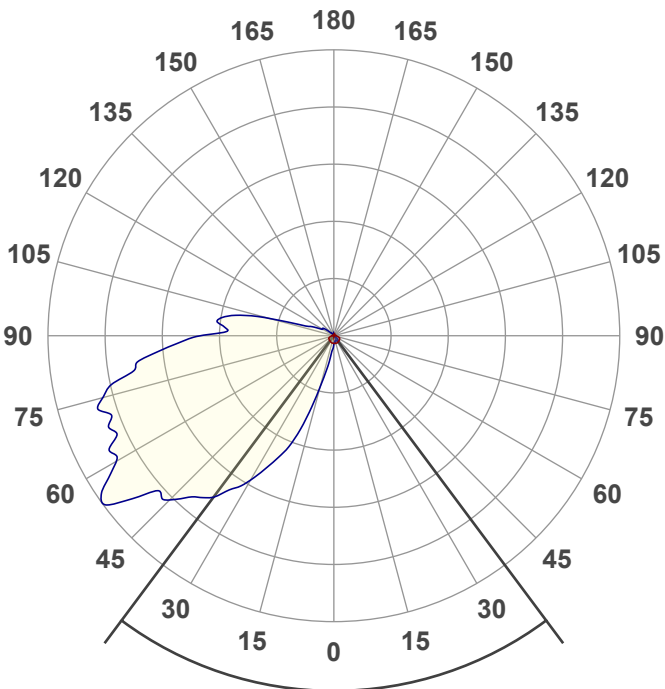
Peak: 6339 cd

Color temperature:



Power: 69.0 W

PF: 1.0



Product name:

WPGL2-SW3B120-HPC (72 W)

Date and time:

8/4/2022 12:01:02 PM

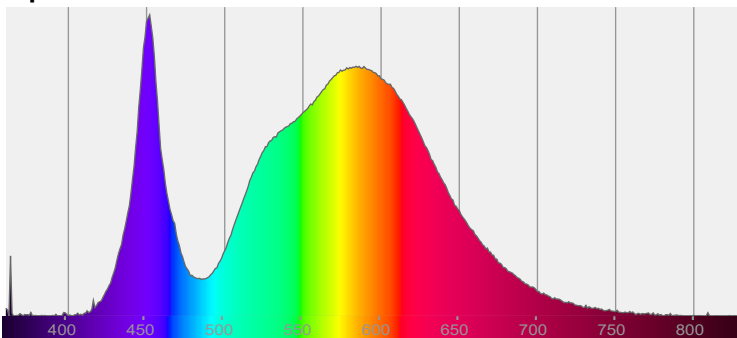
Beam angle

73.4°

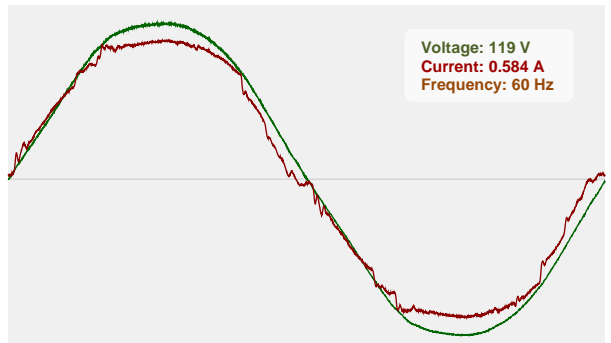


CIE 1931
x: 0.383
y: 0.378

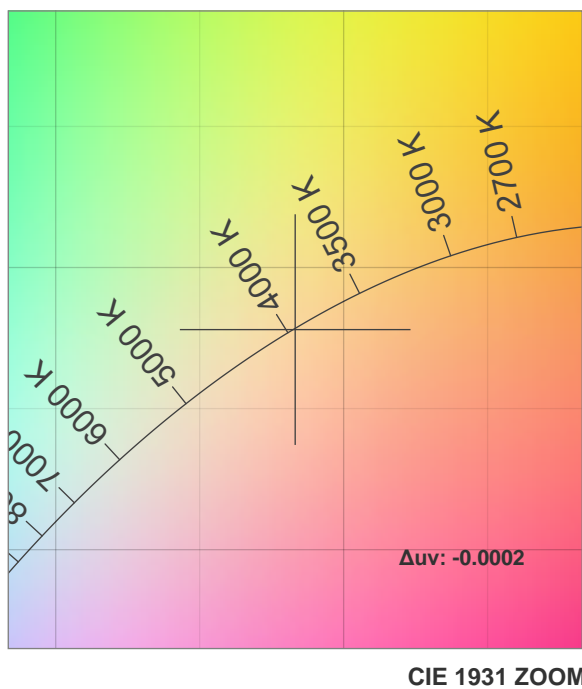
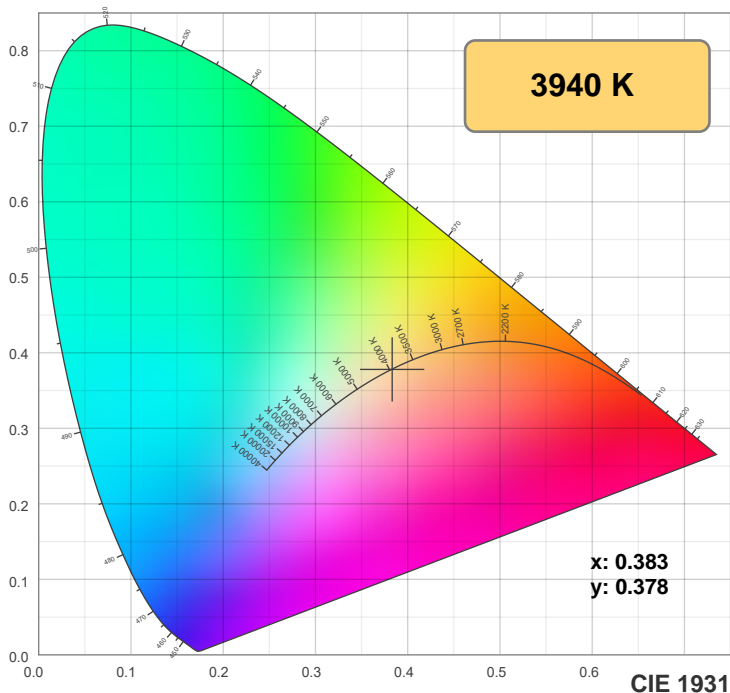
Spectra



Power

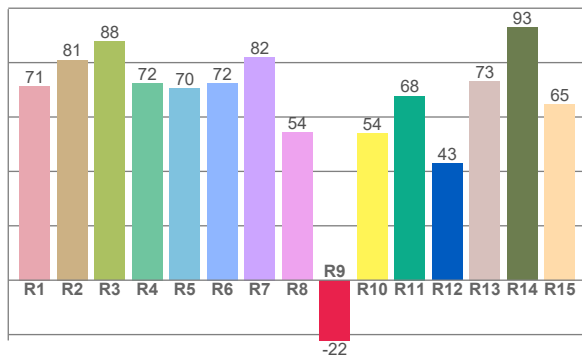
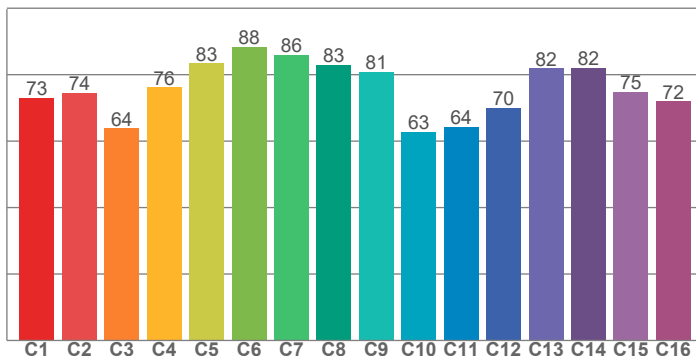


Color Specifications



TM30: 75.6

CRI: 74.0 (R1-R8)



CRI R values, only R1-R8 are used to calculate final CRI value

R1	R2	R3	R4	R5	R6	R7	R8	R9	R10	R11	R12	R13	R14	R15
71.4	81.0	87.8	72.4	70.4	72.4	82.0	54.4	-22.2	54.0	67.8	42.8	73.2	92.9	64.8

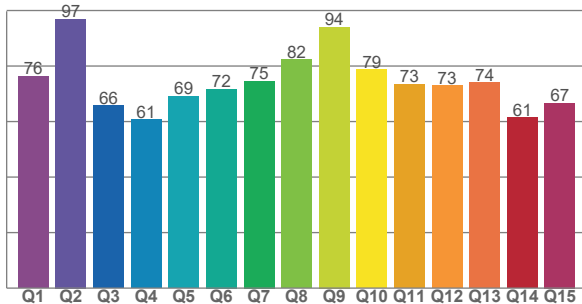
TM30 C values, 16 binned values out of total of 99 C values

C1	C2	C3	C4	C5	C6	C7	C8	C9	C10	C11	C12	C13	C14	C15	C16
73.1	74.4	63.8	76.2	83.4	88.4	85.9	82.9	80.9	62.9	64.3	69.9	81.9	82.1	74.9	72.0

CQS Q values

Q1	Q2	Q3	Q4	Q5	Q6	Q7	Q8	Q9	Q10	Q11	Q12	Q13	Q14	Q15
76.3	96.9	65.7	60.7	69.2	71.7	74.6	82.4	94.1	78.7	73.4	73.0	74.1	61.3	66.7

CQS: 72.7



Color parameters

Color temperature	Color rendering index	Red component	Color fidelity	Color gamut	Color quality scale	Color coordinate cie 1931	Color coordinate cie 1931	Color coordinate	Color coordinate	Color deviation from black body
CCT	CRI	CRI R9	TM30 Rf	TM30 Rg	CQS	x	y	u	v	Δuv
3940 K	74.0	-22.2	75.6	94.3	72.7	0.383	0.378	0.226	0.335	-0.0002

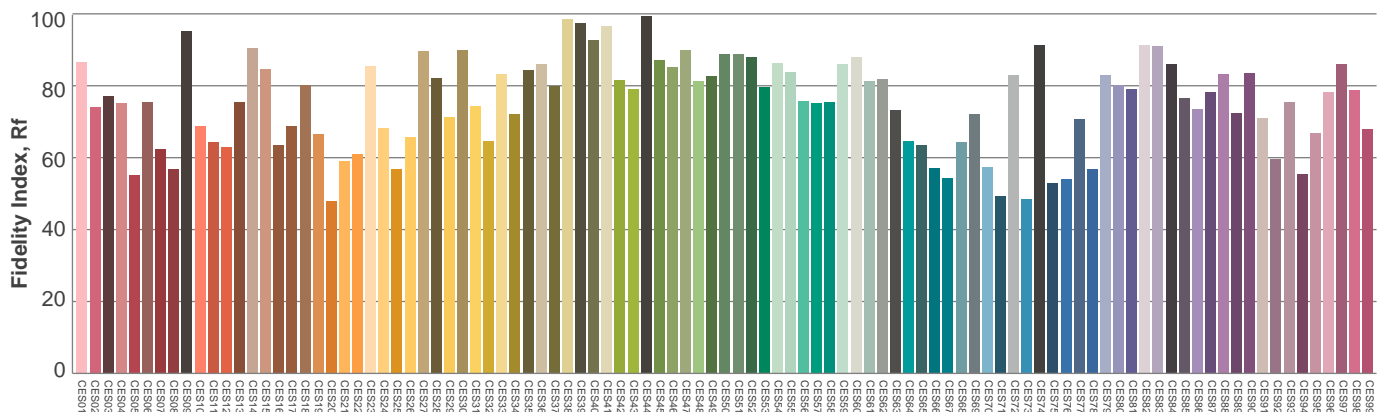
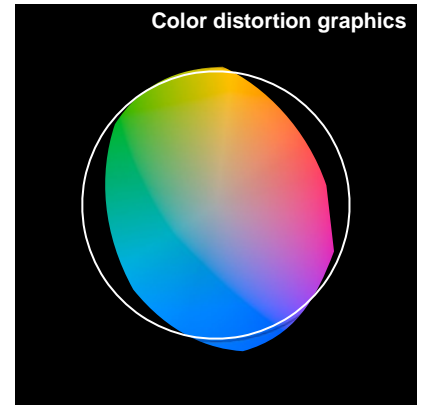
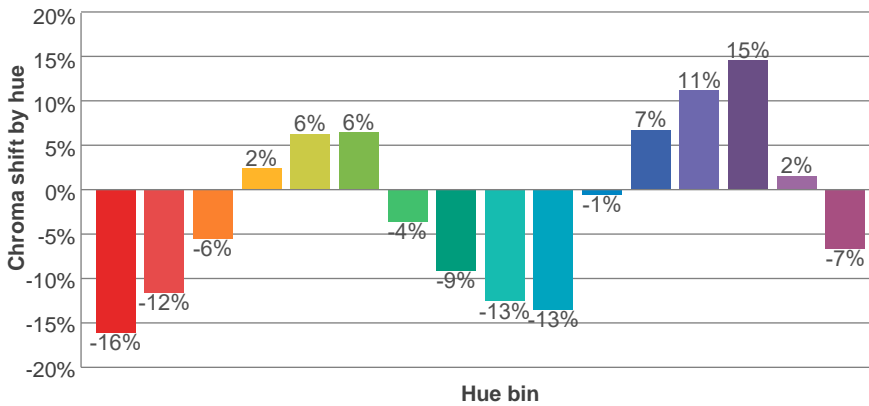
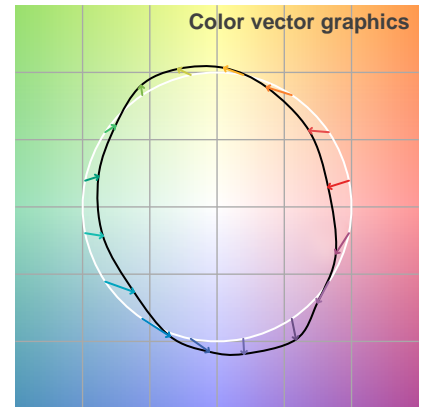
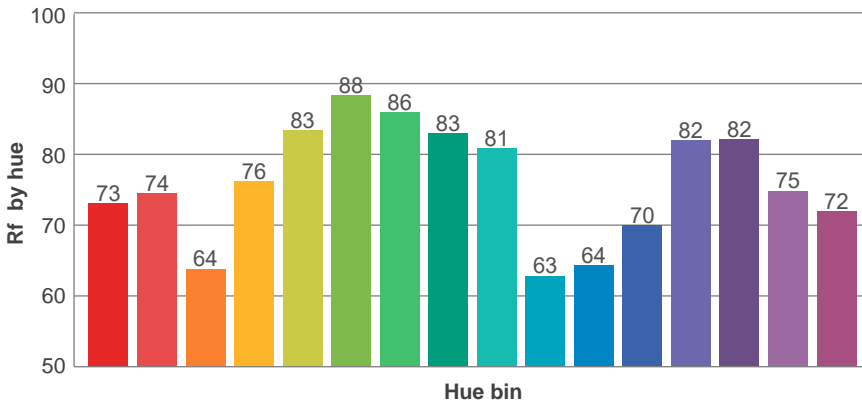
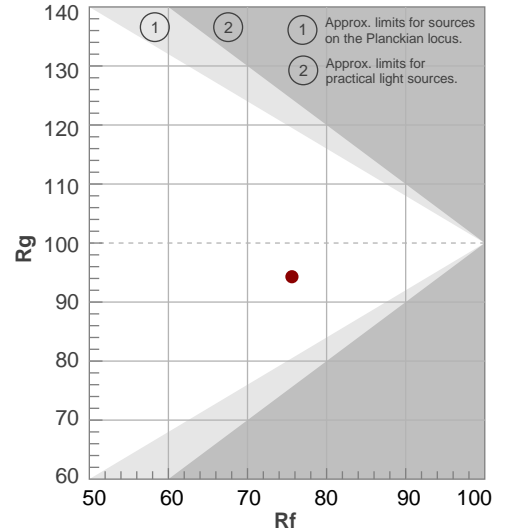


TM30 Report

Rf 75.6
Fidelity index Rf

Rg 94.3
Gammut index Rg

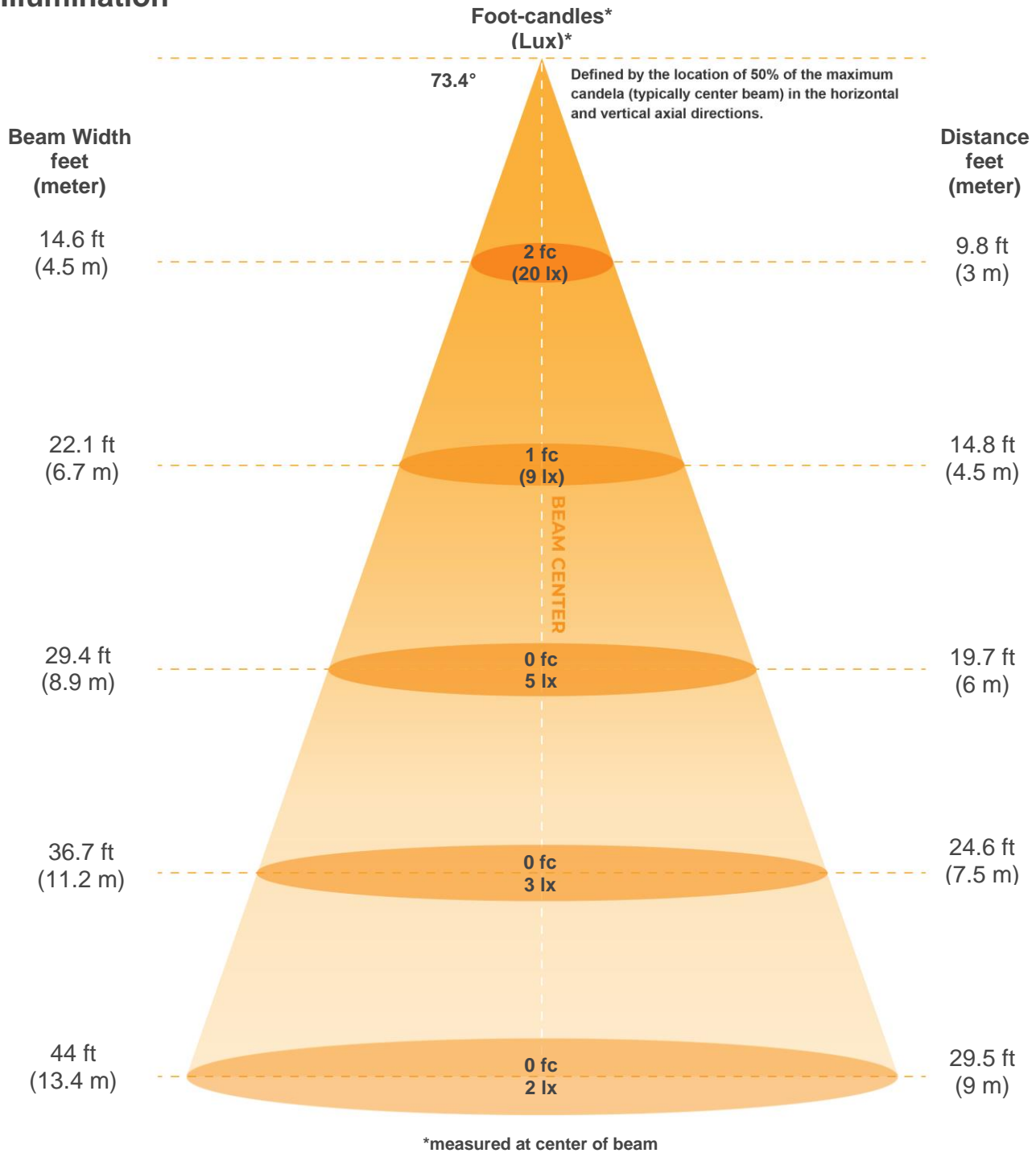
Hue Bin	R _f	Graphic shifts (%)	
		Chroma	Hue
1	73	-16%	-2%
2	74	-12%	9%
3	64	-6%	19%
4	76	2%	15%
5	83	6%	9%
6	88	6%	-3%
7	86	-4%	-8%
8	83	-9%	-5%
9	81	-13%	5%
10	63	-13%	18%
11	64	-1%	24%
12	70	7%	15%
13	82	11%	-2%
14	82	15%	-6%
15	75	2%	-18%
16	72	-7%	-17%



Color Evaluation Sample



Illumination



Beam intensities from 1-20m

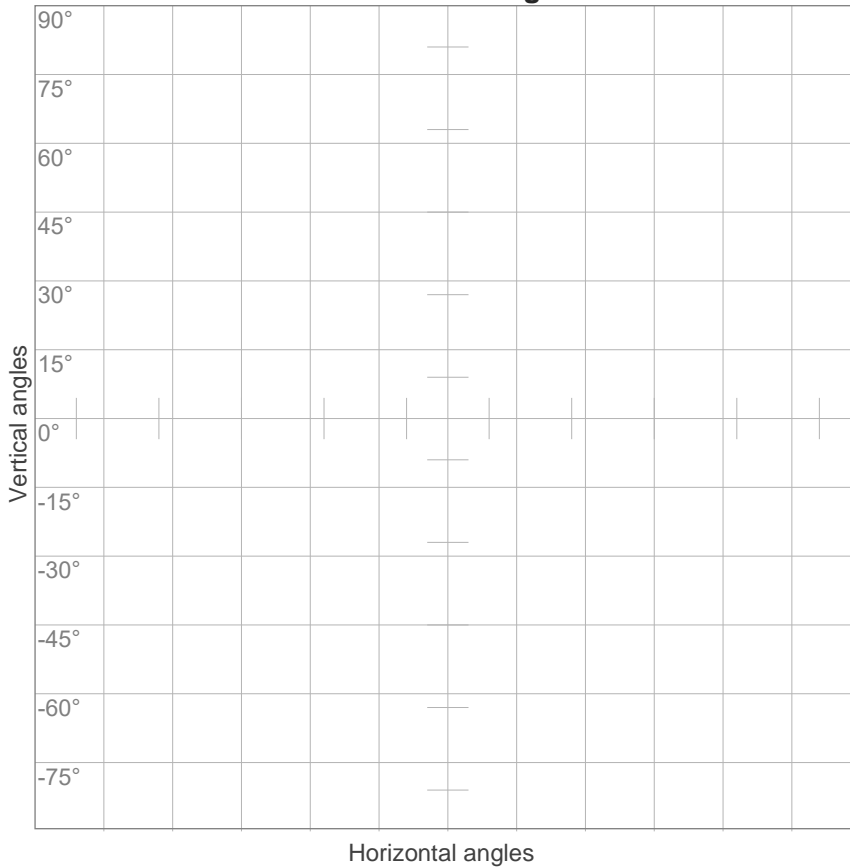
1m	2m	3m	4m	5m	6m	7m	8m	9m	10m	11m	12m	13m	14m	15m	16m	17m	18m	19m	20m
3.3ft	6.6ft	9.8ft	13.1ft	16.4ft	19.7ft	23ft	26.2ft	29.5ft	32.8ft	36.1ft	39.4ft	42.7ft	45.9ft	49.2ft	52.5ft	55.8ft	59.1ft	62.3ft	65.6ft
176lx	44lx	20lx	11lx	7lx	5lx	4lx	3lx	2lx	2lx	1lx	1lx	1lx	1lx	1lx	1lx	1lx	1lx	0lx	0lx
16.4fcd	4.1fcd	1.8fcd	1fcd	0.7fcd	0.5fcd	0.3fcd	0.3fcd	0.2fcd	0.2fcd	0.1fcd	0.1fcd	0.1fcd	0.1fcd	0.1fcd	0.1fcd	0.1fcd	0.1fcd	0fcd	0fcd

Beam angle 50%	Field angle 10%	Cutoff angle 2,5%	Intensity ratio in 120° cone	Intensity ratio in 90° cone
73.4°	118.9°	203.1°	40.9%	18.6%



ISO Diagrams

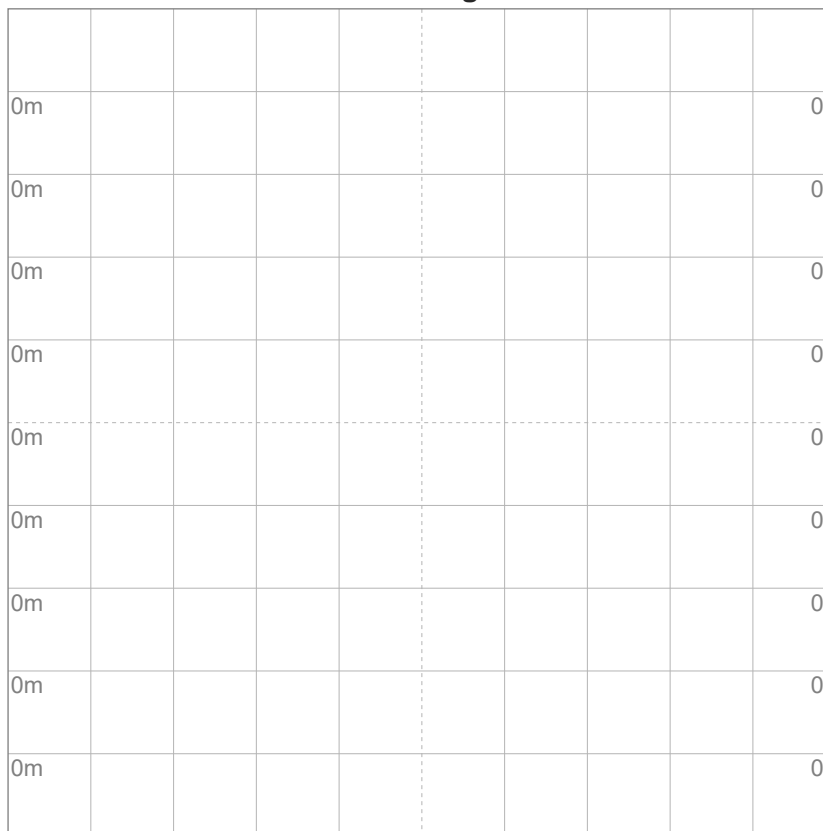
ISO candela diagram



10%	18 cd
20%	35 cd
30%	53 cd
40%	71 cd
50%	88 cd
60%	106 cd
70%	124 cd
80%	141 cd
90%	159 cd

Conditions:
 Number of c-planes: 16
 Candela at center: 176 cd

ISO lux diagram



3%	52.9m lx
5%	88.2m lx
10%	0.176 lx
30%	0.529 lx
50%	0.882 lx

Conditions:
 Number of c-planes: 16
 Lux at center: 1.76 lx

Lux distribution on a surface when lamp is mounted at 10 meters from the surface.

Mounting height: 10 meters (33 feet) UGR



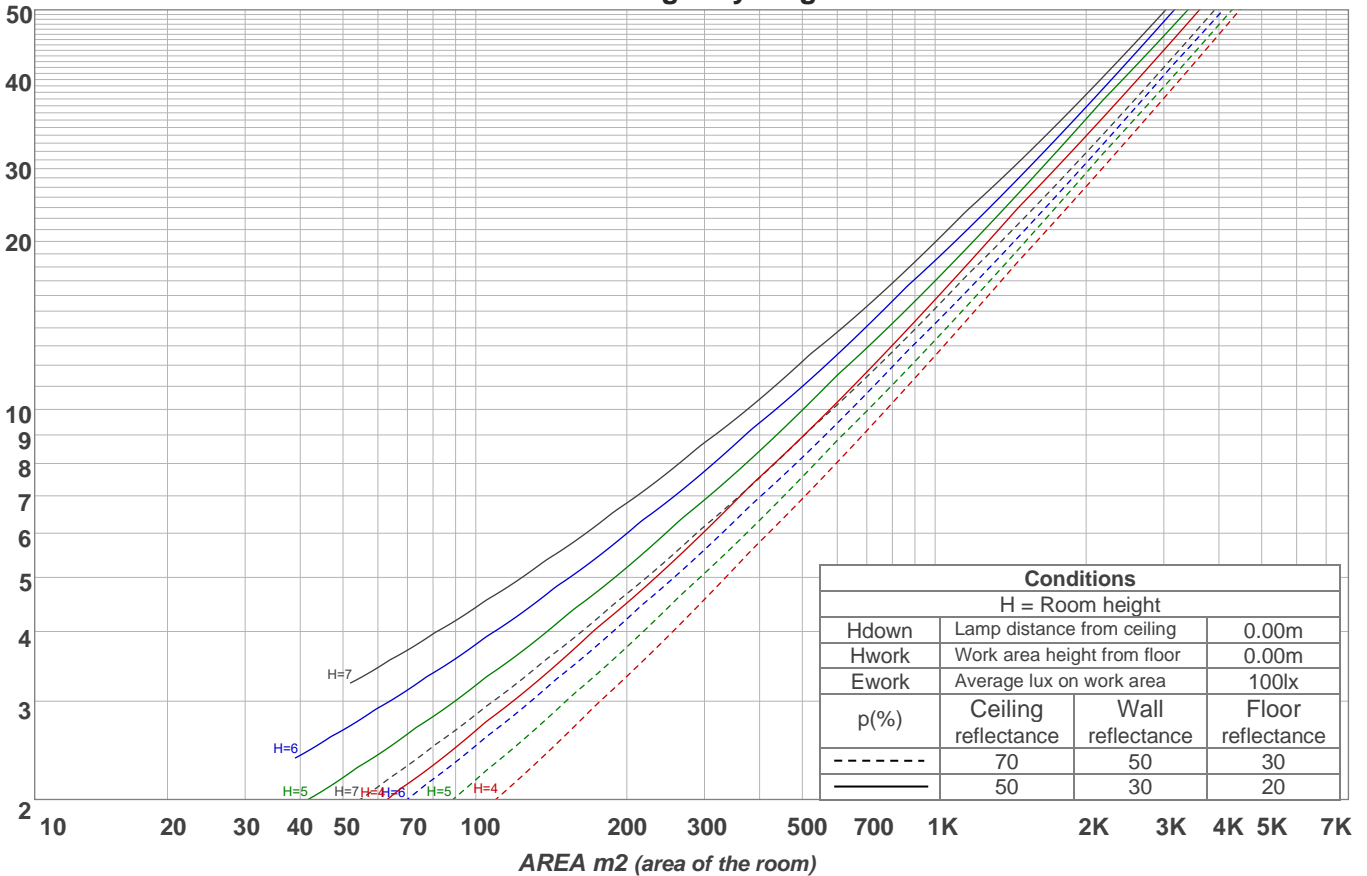
Light Planning

Coefficients of Utilization

Ceiling reflectance	80				70				50			30			10			0			
Wall reflectance	70	50	30	10	70	50	30	10	50	30	10	50	30	10	50	30	10	0			
Floor reflectance	20	20	20	20	20	20	20	20	20	20	20	20	20	20	20	20	20	20	20	20	0
RCR	(RCR: Room Cavity Ratio)																				
	Room Values are expressed as percentage of Lumens delivered to the task surface																				
0	115	115	115	115	111	111	111	111	103	103	103	95	95	95	88	88	88	85			
1	99	91	84	78	94	87	81	75	80	75	70	73	69	65	67	64	61	57			
2	86	75	65	57	82	71	63	55	65	58	52	59	53	48	54	49	45	41			
3	77	63	52	43	73	60	50	42	55	46	39	50	43	37	45	39	34	31			
4	69	54	43	34	65	51	41	33	47	38	31	42	35	29	38	32	27	24			
5	62	47	36	27	59	44	34	27	40	32	25	37	29	23	33	27	21	19			
6	57	41	30	23	54	39	29	22	36	27	20	32	25	19	29	23	18	15			
7	52	36	26	19	49	35	25	18	32	23	17	29	21	16	26	20	15	12			
8	48	32	23	16	45	31	22	15	28	20	14	26	19	13	24	17	12	10			
9	44	29	20	14	42	28	19	13	26	18	12	23	16	11	21	15	11	8			
10	41	27	18	12	39	25	17	11	23	16	11	21	15	10	20	14	9	7			

LAMPS (number of lamps)

Luminaire budgetary diagram



Zonal Lumen Summary

0°-10°	10°-20°	20°-30°	30°-40°	40°-50°	50°-60°	60°-70°	70°-80°	80°-90°
20.8 lm	118 lm	403 lm	805 lm	1228 lm	1610 lm	1660 lm	1609 lm	1259 lm
90°-100°	100°-110°	110°-120°	120°-130°	130°-140°	140°-150°	150°-160°	160°-170°	170°-180°
869 lm	400 lm	144 lm	72.8 lm	23.9 lm	10.9 lm	4.39 lm	2.05 lm	0.663 lm

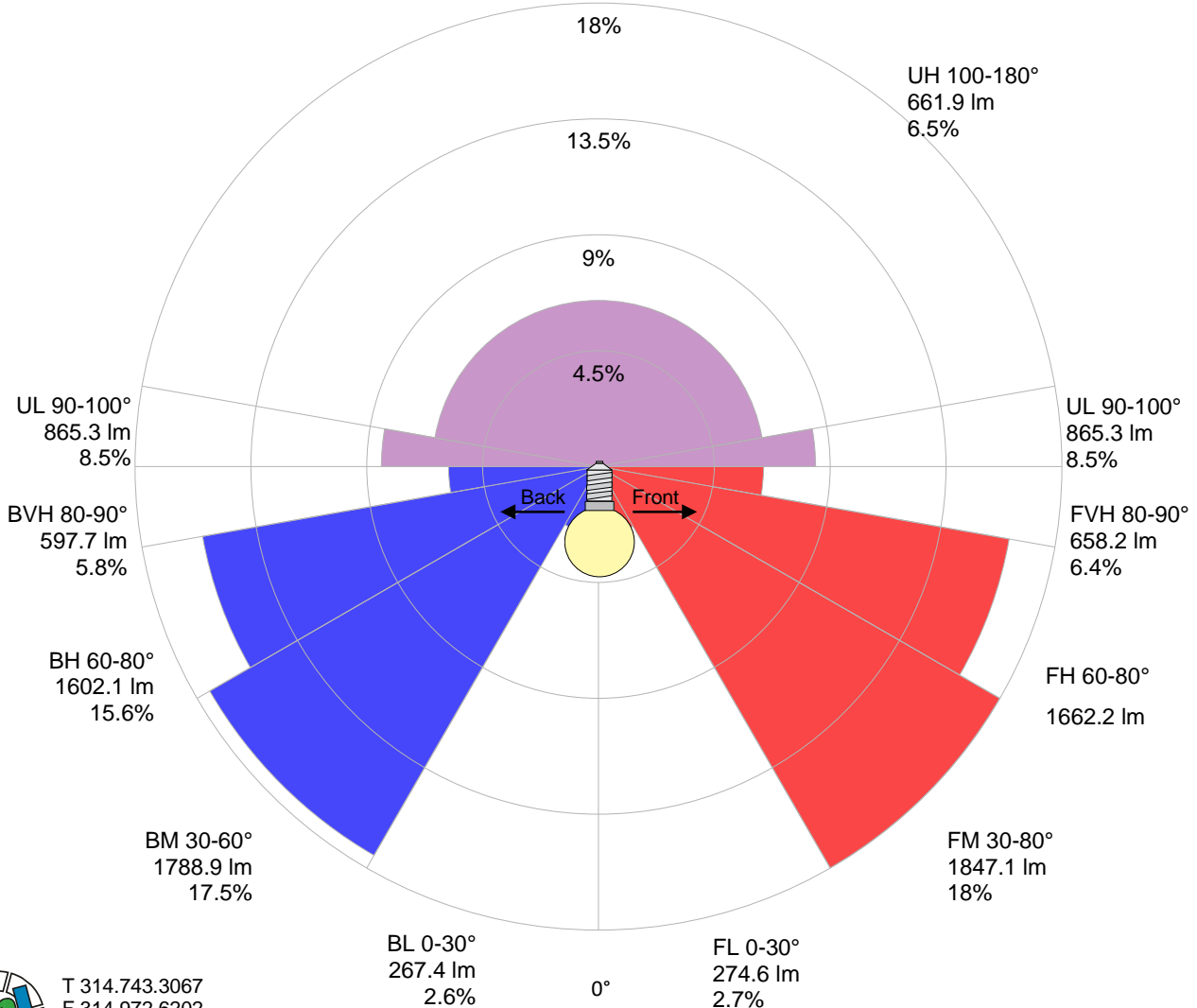


Road Report

LCS table

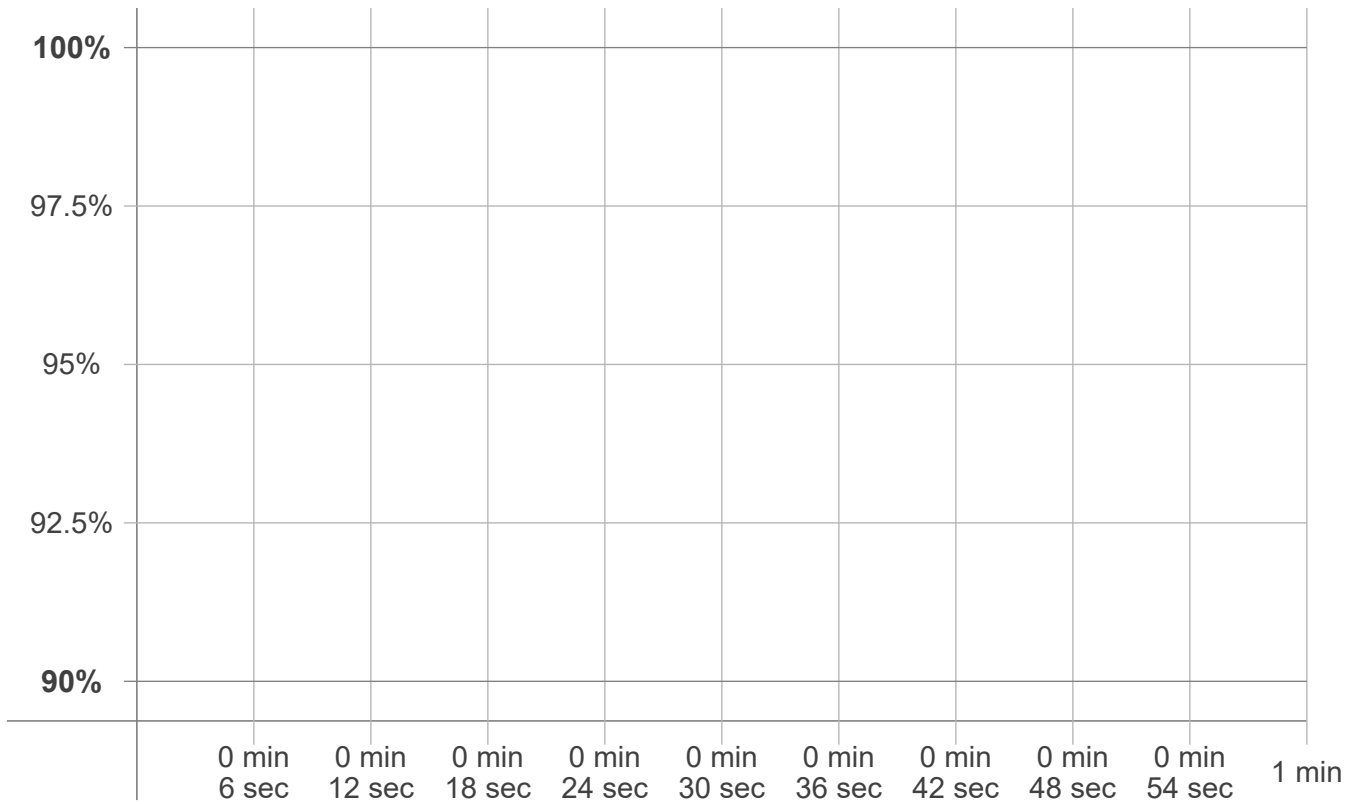
BUG rating:	B3 U4 G4	
Forward light	Lumens	Lumens %
Low(0-30):	274.6	2.7%
Medium(30-60):	1847.1	18%
High(60-80):	1662.2	16.2%
Very high(80-90):	658.2	6.4%
Back light		
Low(0-30):	267.4	2.6%
Medium(30-60):	1788.9	17.5%
High(60-80):	1602.1	15.6%
Very high(80-90):	597.7	5.8%
Uplight		
Low(90-100):	865.3	8.5%
High(100-180):	661.9	6.5%

LCS graph



Stabilization

Warmup curve



Warmup result

Warmup time:	n/a
Warmup variation	n/a%

Warmup conditions

Stable period:	n/a
Stable change max:	n/a%
Minimum time:	n/a

Color temperature change

CCT start	CCT change	CCT end
n/a K	n/a K	3940 K

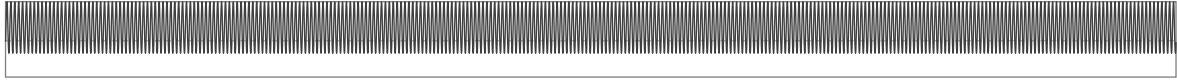
Output change

Output start	Output change	Output end
n/a lm	n/a lm	10239 lm

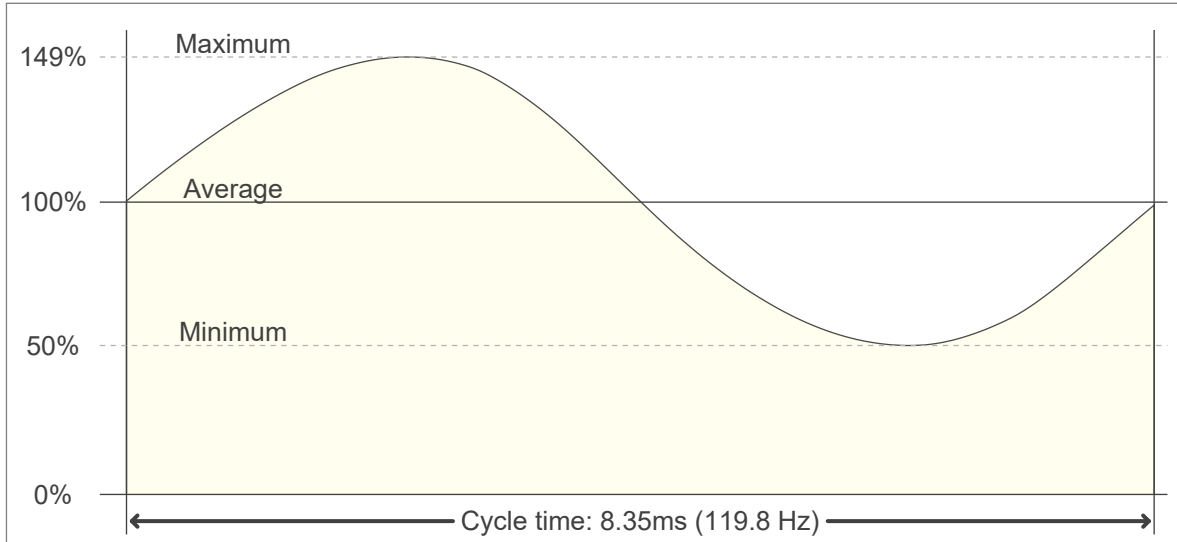


Flicker Specifications

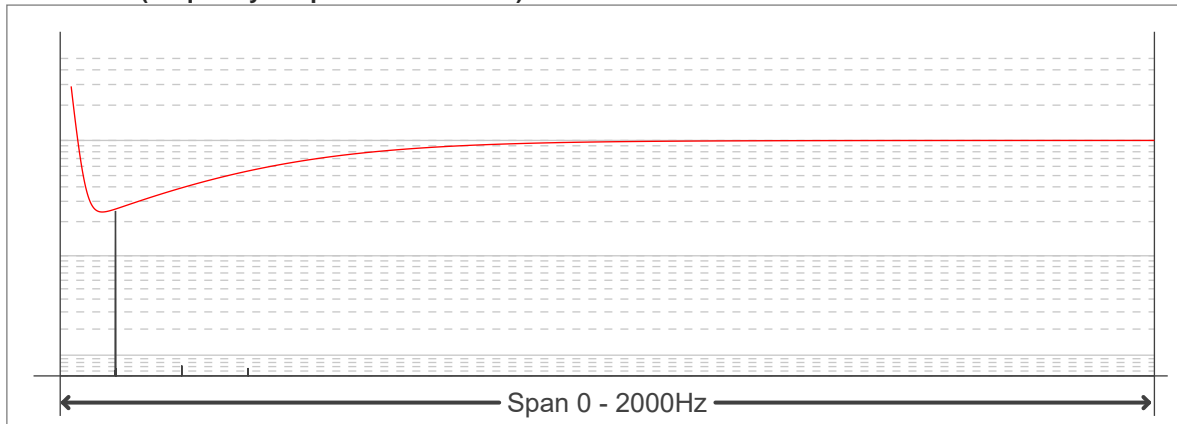
Flicker curve (complete sampled flicker signal)



Flicker frame (frame of one flicker period)



Flicker FFT (frequency scope of flicker curve)



Flicker results:

Flicker frequency:	119.76 Hz
Flicker index:	0.16
Flicker percentage:	49.28 %
SVM: (Visual flicker)	1.8

Flicker conditions:

Sample rate:	20000 samples/second
---------------------	-----------------------------

