

**Important:** Read all instructions prior to installation.

## LED Round Panel Light

### Included Parts

- |                          |                                 |
|--------------------------|---------------------------------|
| 1 - Round Panel Light    | 2 - Anchors with Screws         |
| 2 - Wire Nuts            | 2 - Button Head Phillips Screws |
| 4 - Mounting Hole Covers | 1 - Mounting Bracket            |

### Optional Accessories (sold separately)

- 4" Can Retrofit Kit (LPR-CR4)<sup>1</sup>
- 5-6" Can Retrofit Kit (LPR-CR56)<sup>1</sup>
- Decorative Trim Ring

### Accessory Trim Ring Breakdown

Example: LPRM-RG12

Model	Color	Light Size
LPRM	SN (satin nickel)	6 (5-inch)
	BN (brushed nickel)	12 (7-inch)
	MB (black)	18 (9-inch)
	PC (chrome)	24 (12-inch)
	RG (rose gold)	
	BZ (bronze)	

<sup>1</sup> Not compatible with 5-inch LPRM models

### Specifications

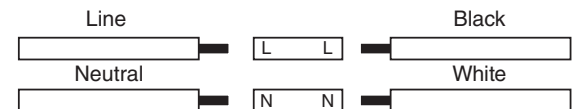
Model	LPRM-30K5-6 LPRM-40K5-6	LPRM-30K7-12 LPRM-40K7-12	LPRM-30K9-18 LPRM-40K9-18 LPRM-SW9-18	LPRM-30K12-24 LPRM-40K12-24
Voltage	120 VAC			
Wattage	6 W	12 W	18 W	24 W
Beam Angle	120°			
Operating Temperature	-4°–104° F (-20°–40° C)			
IP Rating	IP20			
Dimming	Triac			
Warranty	5 years			



### Safety and Notes

- Product should be installed by a certified electrician in accordance with applicable national, state, and local building and electrical codes.
- To reduce the risk of electric shock, ensure that main power source and circuit breakers are switched off before performing any installation or wiring procedures.
- Avoid looking directly into lamp when illuminated.
- Ensure all mounts are securely attached and will support weight of the fixture. Failure to properly support the fixture may result in damage or injury, for which the manufacturer does not assume responsibility.

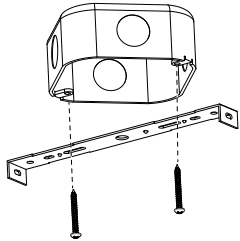
### Wiring Diagram



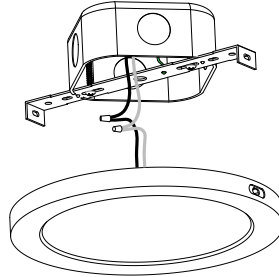
**Important: Read all instructions prior to installation.**

## LED Round Panel Light

### Junction Box Installation

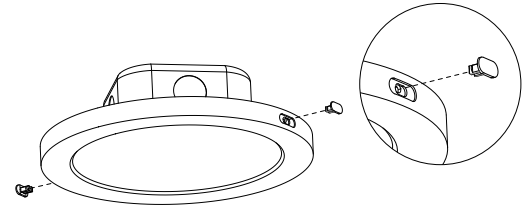


1. Attach mounting bracket to junction box, ensuring it is flush with ceiling.



2. Connect wiring.

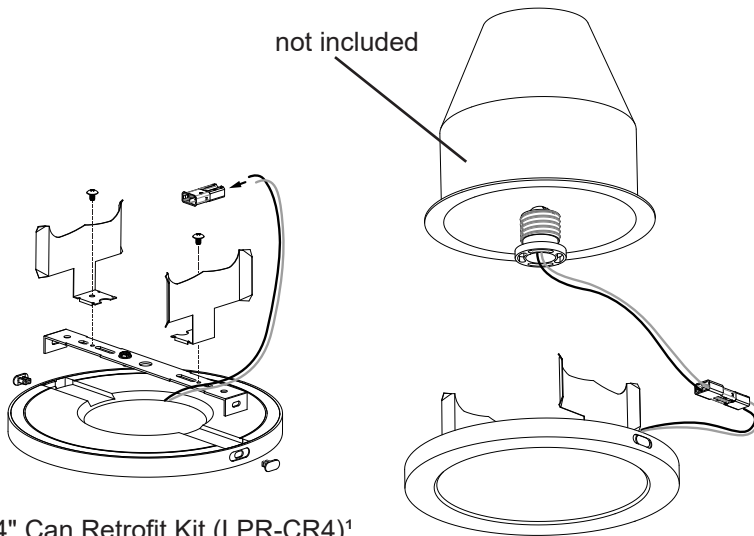
Note: On tunable white models, set color temperature at this point using selector switch connected to back of light.



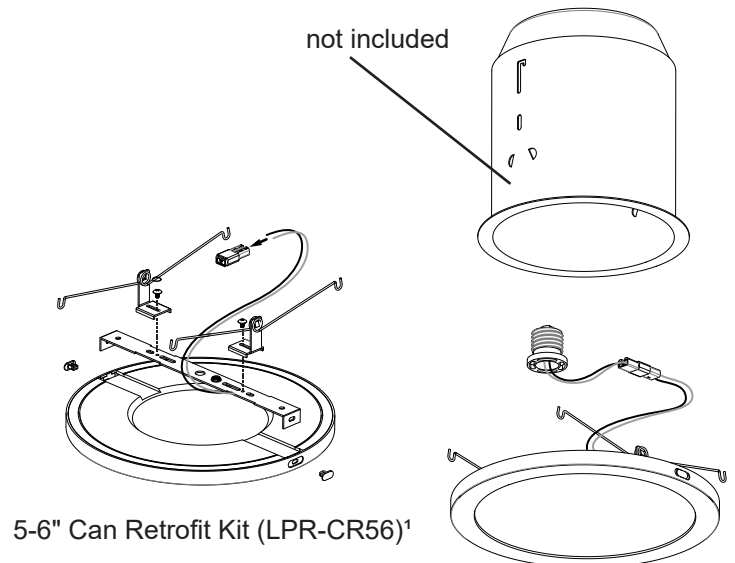
3. Use provided screws to attach light to bracket. Install mounting hole covers.

### Can Light Retrofit Installation<sup>2</sup>

1. Remove existing light and trim from can.
2. Attach can retrofit brackets to included mounting bracket.  
On 5–6" kit, adjust for desired can size.
3. Attach mounting bracket to light. Install mounting hole covers.
4. Attached supplied connector to light wiring. Connect socket adapter into socket.
5. Insert lamp into housing and ensure it's securely held in place.



4" Can Retrofit Kit (LPR-CR4)<sup>1</sup>



5-6" Can Retrofit Kit (LPR-CR56)<sup>1</sup>

<sup>2</sup> Not applicable to 5-inch models.

### Optional Trim Ring Installation

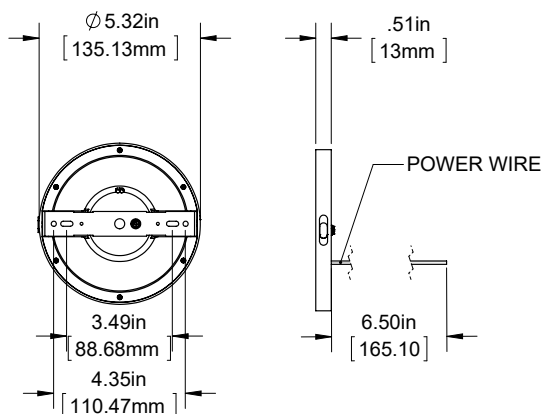
Gently place trim ring over light. Light has built-in magnets that will hold trim ring in place.

Important: Read all instructions prior to installation.

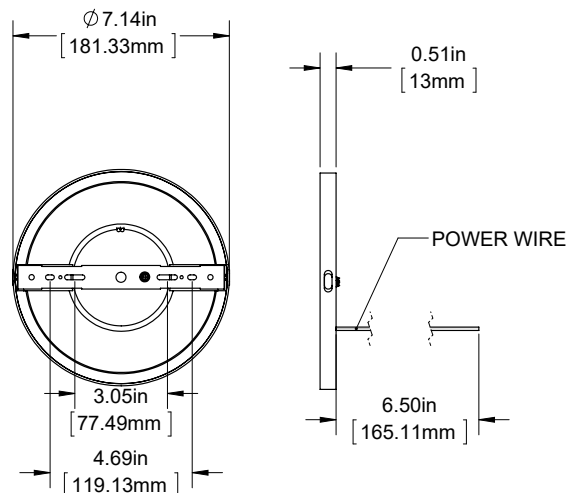
## LED Round Panel Light

### Dimensional Drawings

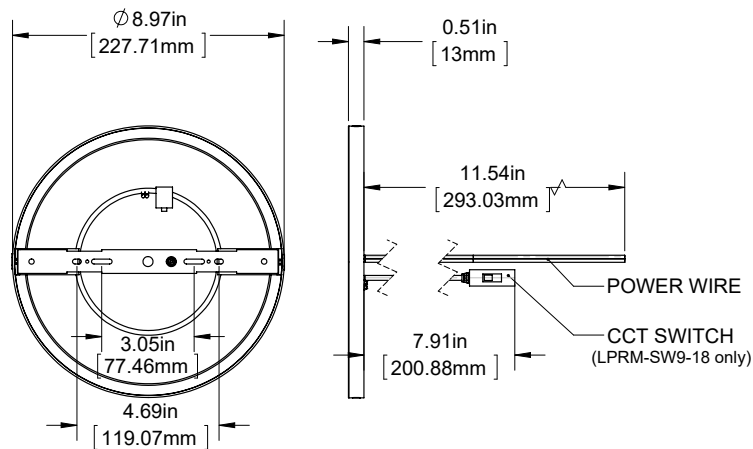
LPRM-xK5-6



LPRM-xK7-12



LPRM-xK9-18, LPRM-SW9-18



LPRM-xK12-24

