

2.4GHz Gateway Instruction

Contents

<u>Product features</u>	2
<u>Product parameter</u>	3
<u>Indicator status instruction</u>	3
<u>Smartphone app control instruction</u>	4-10
<u>Install “Tuya Smart” APP</u>	4
<u>Pairing network</u>	4-5
<u>Copy remote</u>	6
<u>Select zones</u>	7
<u>Rename group zones</u>	8
<u>Link / Unlink</u>	9
<u>Share device in home</u>	10
<u>Alexa voice control instruction</u>	11
<u>Google home voice control instruction</u>	12
<u>Attention</u>	13

Product features

It's compatible with MiBoxer 2.4GHz RF products. It communicate icloud with smartphone via Wi-Fi network, user can do remote control for connected lights via **"Tuya Smart"** or **"MiBoxer"** App. Support third party voice control, meet every smart application in your home.



Compatible with 2.4GHz RF products



Third party voice control



16 Millions of colors to choose



Support Remote control



Color temperature adjustable



Home sharing function



Dim brightness / Saturation



Tap-to-run & automation



Smartphone APP control



Support timmer control

Product parameter

Model No.: WL-Box2

Input: 5V \equiv 500mA (Type-C)

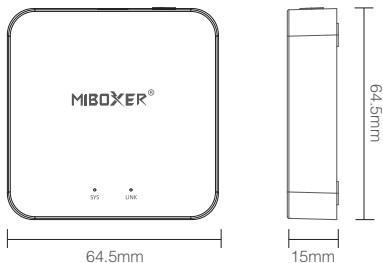
Working Temperature: -10~40°C

Wireless Technology: Wi-Fi IEEE 802.11b/g/n 2.4GHz

RF: 2.4GHz

Transmitting Power: 6dBm

2.4G RF Control Distance: 30m



Indicator status instruction

Device status	"SYS" Indicator	"LINK" Indicator
Pairing with Wi-Fi	Flash quickly	Off
Connected with Wi-Fi	Off	On
Steuersignal empfangen	Off	Blinkt
Wi-Fi getrennt	On	Off

Smartphone app control instruction

Download an install “Tuya Smart” APP

Search “Tuya Smart” in apple or google store, or scan QR code directly.

Please creat account if using in the first time.



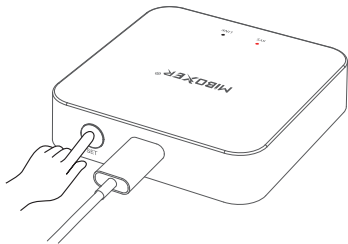
Pairing with Network (5G router is useless)

1). Wire gateway with power source, enable smart phone to connect with WiFi.

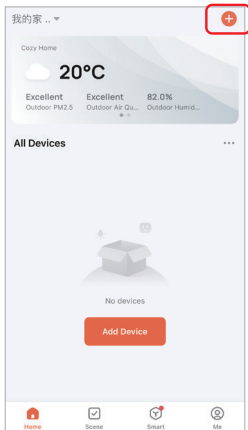
2). Standby pairing with Network

Confirm “SYS” indicator flashing quickly

Please long press “SET” 3 seconds if indicator not flash quickly



3). Click “+” in APP



4). Select “Lighting”

5). Find out “Light Source (BLE+Wi-Fi)”

6). Finish every step based on instruction

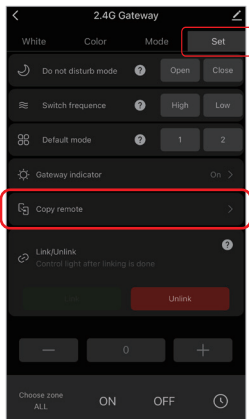


Copy Remote

While you have multi lamps which are already linked with remote, the new gateway have two control solutions for your lamp:

Way 1: Follow instruction of linking gateway and link gateway with your lamp.
(Disadvantage: waste time)

Way 2: Use “Copy remote” function, it can control lamps once copying is done.
(Advantage: save time)



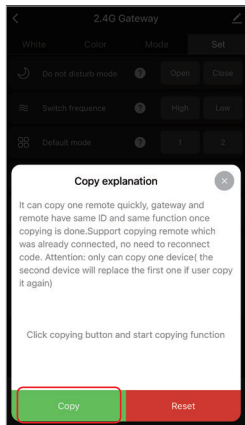
How to copy remote?

1. Click “Set”
2. Click copy remote
3. Click “Copy”
4. Finishing it based on App instruction

Clean up

Clean up remote which is copied, divide remote and gateway

Attention: gateway only can copy one remote, it will replace the previous one if user copy another new remote

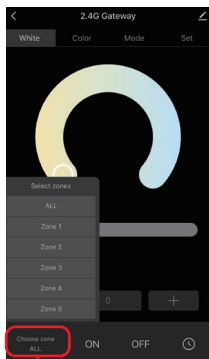


How to select zones?

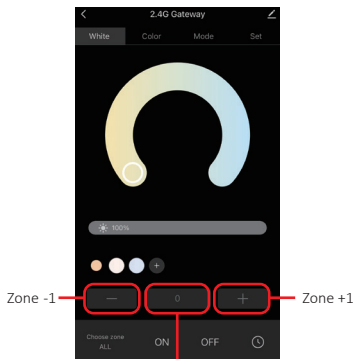
- 1). Click connected gateway,
Eg: "2.4G Gateway".



- 2). Explanation



Short press to select zones
(Master zone, 1-16 group zone)



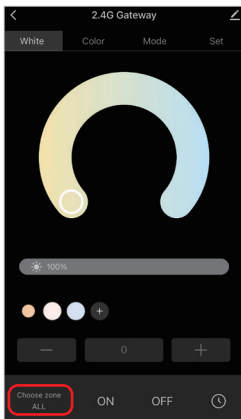
Short press to select zones
(Master zone, 1-100 group zone)

Attention: "0" means master group

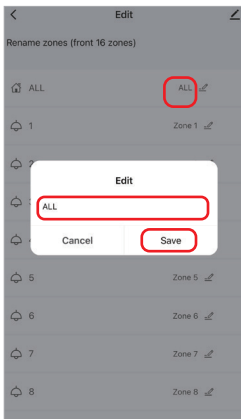
How to rename group zones?

Attention: only support to rename master zone and 1-16 zones

1). Long press to “Choose zone”



- 2). Click zones which you want to rename (Eg: ALL)
- 3). Type new name
- 4). Click “Save”

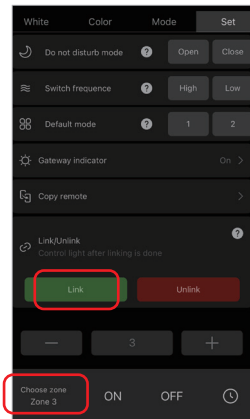


Link/Unlink instruction

The lamp must be linked with gateway. One zone can control countless MiBoxer 2.4G lamps.

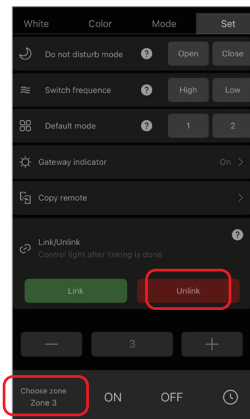
Link:

- 1). Select group zones;
- 2). Power off lamps and power on again after 10 seconds (review lamp instruction)
- 3). Lamp is on, short press “Link” 1 time
- 4). Link is done once light flashes 3 times slowly



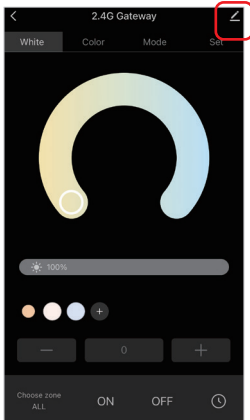
Unlink:

- 1). Select group zones;
- 2). Power off lamps and power on again after 10 seconds (review lamp instruction)
- 3). Lamp is on, short press “Unlink” 1 time
- 4). Unlink is done once light flashes 10 times quickly

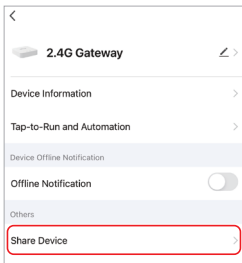


Share device in home

1). Click “”



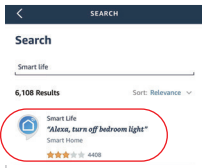
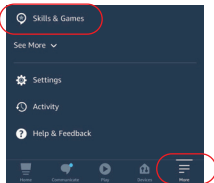
2). Click “Share Device”, follow instruction on APP



Alexa voice control instruction

Please add device into Tuya Smart App ([details on page 4](#)) before doing following steps:

- 1). Open Alexa App
- 2). Click "More" on the bottom of right corner
- 3). Click "Skills & Games"
- 4). Click "Q" on the top of right corner
- 5). Type into "Smart life" and search
- 6). Click "Smart Life" skill, follow instruction to finish configuration and start voice control



Alexa voice group control

use voice command to switch zones firstly, then control lampes (turn on/off, dim brightness, color temperature, adjust color)

Command as following:

"Alexa, set the <device name> group to 7."

"Alexa, decrease the group on the <device name> by 3."

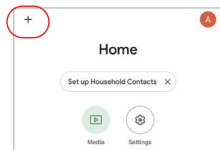
"Alexa, what's the <device name> group?"

"Alexa, set the group on the <device name> to (0-100)"

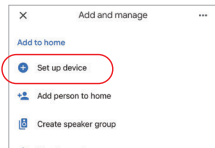
Google Home voice control instruction

Please add device into Tuya Smart App ([details in page 4](#)) before doing following steps:

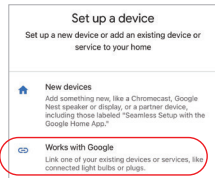
- 1). Open Google Home App
- 2). Click “+” on the top of left corner



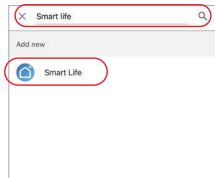
- 3). Click “Set up device”



- 4). Click “Works with Google”



- 5). Click “Q” on the top of right corner
- 6). Type into “Smart life” and search
- 7). Click “Smart Life” skill, follow instruction to finish configuration and start voice control



Attention: Google Home don't support group control.

Attention

1. Please stay away from magnetic area, otherwise signal will be affected
2. Don't install device in the place where have strong sunshine, high temperature or humidity feature, working temperature is $-10\sim 40^{\circ}\text{C}$.



Scan QR code or review video from following link

<https://miboxer.com/wifi-series-video>



Made in China