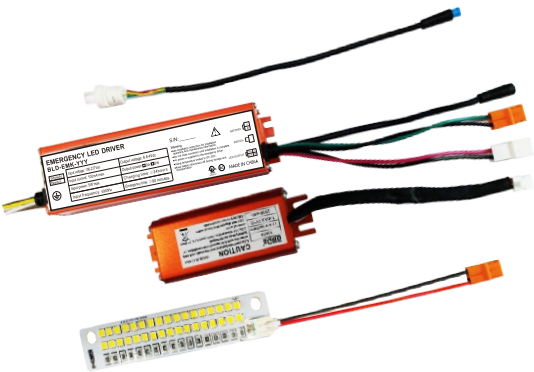


Standalone Emergency

BLD-EMK-YYY

Features

- Our BLD-EMK-YYY Series can be used on a large array of Lighting Fixtures for both T5 and T8 installations.
- The BLD-EMK-YYY , LED emergency back-up kit includes constant wattage emergency driver, battery, high efficacy LED module and LED charging indicator light.
- The emergency back-up kit provides emergency lighting solution in different lighting fixture/luminaire with input power source of 100-277VAC.
- BLD-EMK-YYY switches to emergency mode when power fails, the kit gives constant 760lm with 5000K LED module for a minimum of 90 minutes.



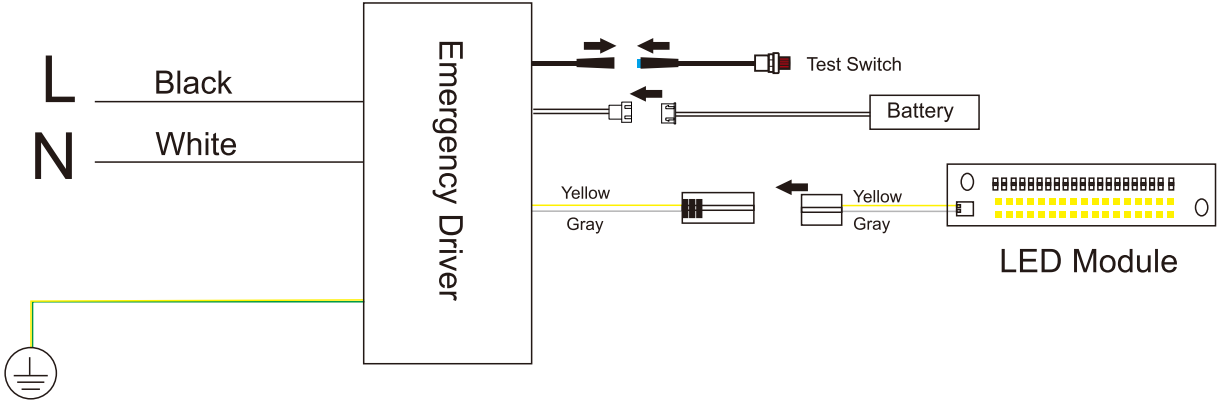
Specifications



Input voltage: 100-277Vac	Output voltage: 6-8.4Vdc
Input current: 100mA max.	Output power: □ 6W □ 8W
Input power: 5W max.	Charging time: ≥24hours
Input frequency: 50/60Hz	Emergency time: ≥90 minutes

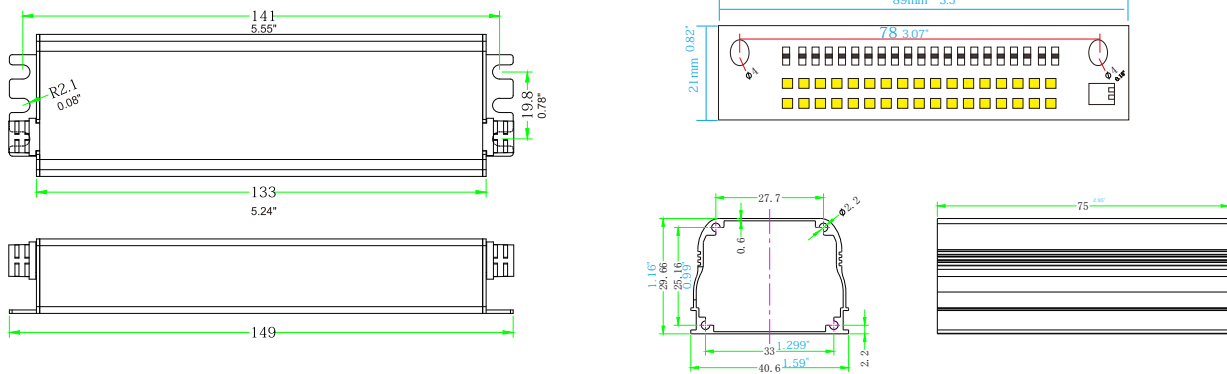
WiringDiagram

Case must be grounded



Dimensions:

Case- 5.55"x1.65"x0.87" (149mmx42mmx22mm)



IMPORTANT SAFEGUARDS

When using electrical equipment, basic safety precautions should always be followed including the following
READ AND FOLLOW ALL SAFETY INSTRUCTIONS.

- Risk of fire or electric shock. Luminaire wiring and electrical parts may be damaged when drilling for installation of LED Emergency Backup. Check for enclosed wiring and components.
- Risk of fire or electric shock.This LED Emergency Backup installation requires knowledge of luminaire. electrical systems. If not qualified,do not attempt installation.Contact a qualified electrician.
- Before installing,make certain the AC power to the fixture is off.
- The electrical rating of this product is 100-277Vac.Installer must confirm that there is 100-277Vac to the fixture before installation.
- To prevent electrical shock only mate unit connector after installation is complete and before the AC power to the fixture is back on.
- This LED Emergency Backup unit requires an un-switched AC power source of 100-277Vac,50/60Hz The AC driver must be on the same branch circuit as the LED Emergency Backup unit.
- Do not let power supply cords touch hot surfaces.
- Do not mount near gas or electric heaters.
- Do not use out doors
- Do not connect battery pack connector until all other wiring is complete and AC power is on.
- The emergency LED driver is for use with grounded,ULlisted LED luminaires,shall be enclosed by the LED luminaire and bonded to the grounding of LED luminaire.
- Verify that all replacement lamp types marked on the installed luminaire are also identified as suitable for use with this emergency battery pack.
- The battery pack is fixed by the screw and the indicator lamp is attached to the shell of the laminaria by3M tape
- Equipment should be mounted in locations and at heights where it is not be subjected to tampering by unauthorized personnel.
- The use of accessory equipment not recommended by the manufacturer and may cause an unsafe condition.
- Do not use this equipment for other than its intended use.
- Use with grounded, UL Listed, dry or damp location rated fixtures.

