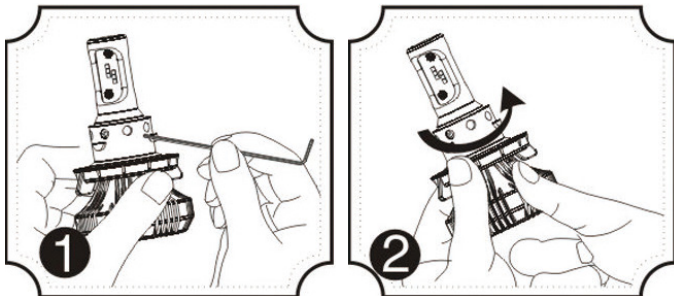


Warranty Agreement

Lifetime Warranty is to the original purchaser. The warranty is for repair or replacement of parts and covers manufacturing faults only. Labor costs are not covered by warranty. Warranty does not cover parts that fail due to physical damage or damage from improper operation or electrical connection. Repair or replacement as provided under this warranty is the exclusive remedy to the customer. Manufacturer is not liable for any incidental or consequential damages related to any breach of this warranty.

Beam Pattern adjustment for H13

These bulb numbers may require bulb body to be rotated in relation to mounting flange to achieve desired beam pattern. Follow steps below to adjust. Bulb cannot be adjusted while installed in headlight housing.



To adjust, use a hex key to remove screw on locking ring. Rotate bulb in ring to desired position and reinstall screw.

LED Headlight Kit User Manual

HLV4 Series



Important: Read all instructions prior to installation.

LED Headlight Kit

x-HLV4

Safety and Notes

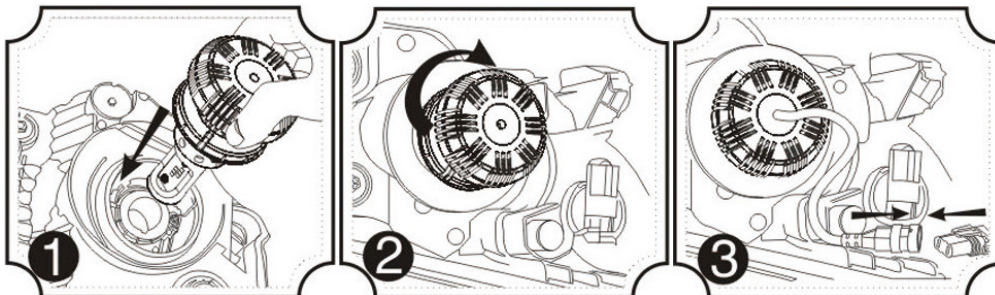
- Product should be installed by a qualified technician.
- Ensure adequate ventilation—good heat dissipation prolongs product life.
- Power source must be 9–32 VDC.
- Ensure all wire connections are correctly made before applying power.
- If a fault occurs, contact Super Bright LEDs. Do not attempt to repair product yourself.
- Beam pattern is only adjustable through vehicle's existing aim adjustment mechanisms.
- Images shown are for illustration purposes and may not directly represent all models.

Installation Instructions

Begin by removing factory light. Due to difference in physical size, existing rear dust cover will need to be modified or discarded where applicable.

Note: Headlight images below may differ from actual part you receive. Wiring has been removed in some instances for clarity, but does not detach from bulb assembly.

880/881/9005/9006/H8/H11/H13/H16JP/P13/PSX24/PSX26

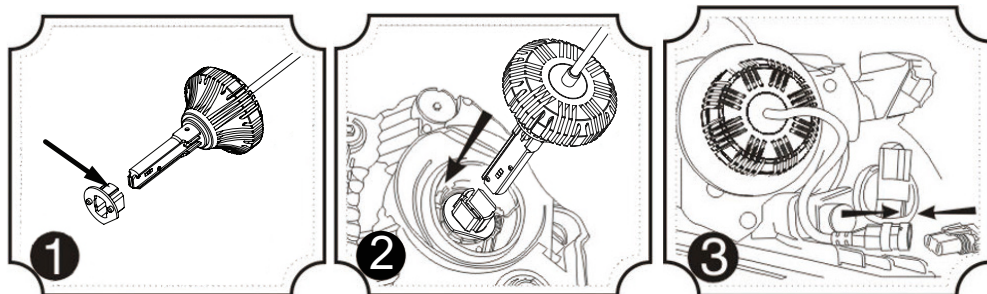


1. Insert light into housing.

2. Rotate clockwise to lock in place.

3. Connect light to vehicle wiring harness.

H1



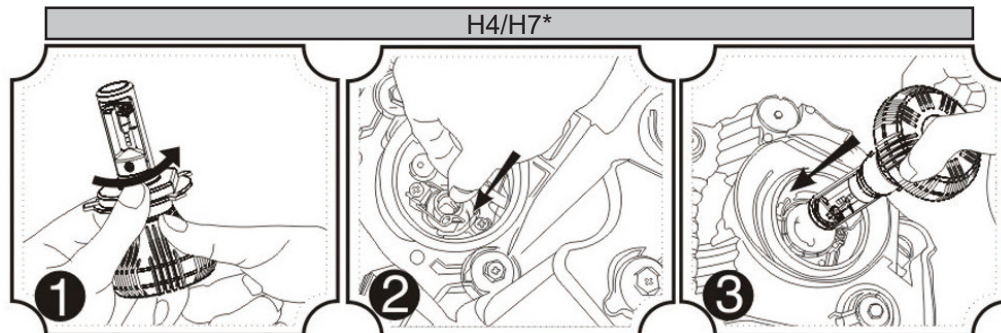
1. Remove mounting flange by gently prying out on both retaining tabs.

2. Install mounting flange into headlight housing, then install light into flange.

3. Connect light to vehicle wiring harness.

Installation Instructions (continued)

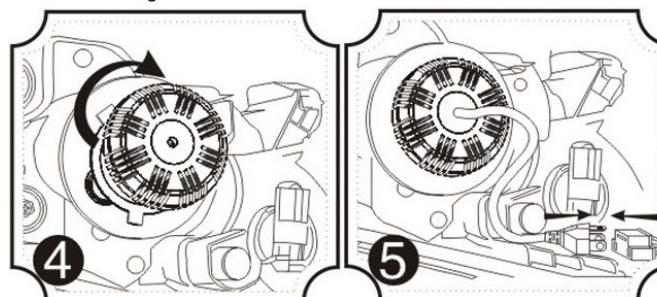
H4/H7*



1. Turn mounting flange counterclockwise to release bayonet-style connection and remove flange.

2. Install mounting flange into headlight housing.

3. Line up and install light into mounting flange.



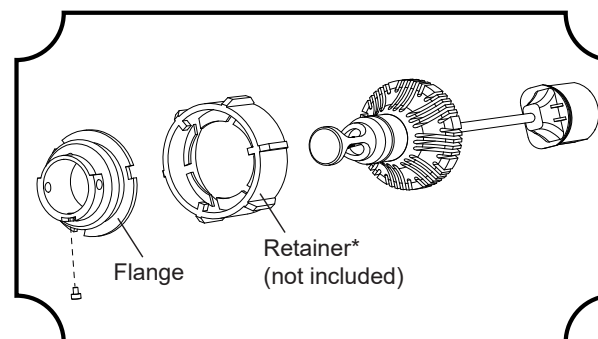
4. Gently rotate light clockwise until locked in place.

5. Connect light to vehicle wiring harness.

*H7 bulbs may require an additional adapter/retainer on some Buick, BMW, Ford, Kia, Mercedes, Nissan, and VW/Audi models. Check your vehicle before ordering.

9004/9007

1. Remove hex key screw holding mounting flange to bulb, then slide flange off of bulb.
2. Align three ears on original retainer with three notches on flange and slide.
3. Re-insert bulb into flange then reinstall hex key screw.
4. Install bulb into headlight housing and rotate to adjust beam angle. Lock retainer in place when desired angle is achieved.



*Note: Some Ford models may require the retainer to be trimmed to clear heat sink on bulb.

