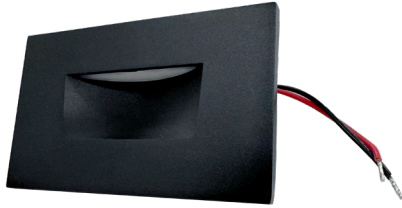


Important: Read all instructions prior to installation.

Deck Light - Selectable CCT



Safety and Notes

- Always turn off the power at the circuit breaker or fuse box before installation or maintenance.
- Prevent wiring damage by ensuring wires do not come into contact with sharp edges.
Secure Connections: Use UL-approved wire connectors to secure all wiring connections.
- Verify that the supply voltage matches the specifications on the fixture label.
- Do not look directly at the light source while it is on.
- Allow the fixture to cool before handling or replacing any components.

Specifications

Specifications	SDLA-3CCT-BLK
Operating Voltage (Type B)	12V AC/DC
Operating Temperature	-20-50 °C (-4-122 °F)
IP Rating	IP65

Included Parts

- Deck Light
- Anchor Screws - 2
- Backplate - 1
- Twist on Wire Connectors - 3

Installation

1. Turn off the power supply at the main circuit breaker to ensure safety.
2. Select color temperature (3000K, 4000K, 5000K) on back of deck light before installing.
3. Install the backplate onto the junction box using the provided screws.
Ensure it is secure and properly aligned.
4. Make all wiring connections using the provided twist on wire connectors.
5. Carefully place the light body into the junction box.
Ensure it fits snugly and is properly seated.
6. Restore power at the circuit breaker and test the light to ensure it works correctly.

