



HL-IP20-80CRI-5m

FEATURES

- 12 or 24 VDC input available
- 80+ CRI
- Multiple density options
- LED lifetime of 50,000 hours (L70)
- 10 mm strip width
- 3M adhesive backing
- Operating temperature of -4°-113° F (-20°-45° C)
- IP20 environmental rating

APPLICATIONS

Some common applications include sign lighting, bias lighting, cove lighting, task lighting, backlighting, accent lighting, and under cabinet lighting.

AVAILABLE VERSIONS

18 LEDs/ft (60 LEDs/m)

- STN-A30K80-C3A-10B5M-12V
- STN-A40K80-C3A-10B5M-12V
- STN-A50K80-C3A-10B5M-12V
- STN-A30K80-C6A-10B5M-24V
- STN-A40K80-C6A-10B5M-24V
- STN-A50K80-C6A-10B5M-24V

36 LEDs/ft (120 LEDs/m)

- STN-A30K80-C3A-10C5M-12V
- STN-A40K80-C3A-10C5M-12V
- STN-A50K80-C3A-10C5M-12V
- STN-A30K80-C6A-10C5M-24V
- STN-A40K80-C6A-10C5M-24V
- STN-A50K80-C6A-10C5M-24V

ACCESSORIES

Power Supplies



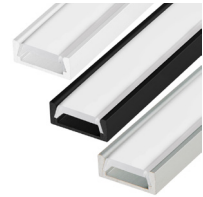
Strip Connectors



Controllers and Switches



Mounting Hardware and Housings



SAMPLE PART NUMBER BREAKDOWN

STN-A40K80-C6A-10C5M-24V

| FAMILY / CATEGORY / COLOR | | | | LED TYPE / SEGMENT | | IP RATING | SIZE / DENSITY / VOLTAGE | | | |
|---------------------------|-----------------|--|-----------|--------------------|------------------------------|-----------|--------------------------|-------------------------------|-------------------|------------------------|
| STN | A | 40K | 80 | C | 6 | A | 10 | C | 5M | 24V |
| Strip Type | Strip Type | Color | CRI | LED Type | LED/Segment | IP Rating | Strip Width | Density | Length | Voltage |
| STN: Non-weatherproof | A: Single White | 30K: 3000K 40K: 4000K 50K: 5000K | 80: 80-84 | C: 2835 | 3: 3 LED/seg 6: 6 LED/seg | A: IP20 | 10: 10 mm | B: 60 LEDs/m C: 120 LEDs/m | 5M: 16.4 ft (5 m) | 12V: 12 V 24V: 24 V |

SPECIFICATIONS

| Model STN- | AxK80-C3A-10B5M-12V | AxK80-C6A-10B5M-24V | AxK80-C3A-10C5M-12V | AxK80-C6A-10C5M-24V |
|-------------------|----------------------|---------------------|----------------------|---------------------|
| Power Consumption | 59 W (total for 5 m) | | 69 W (total for 5 m) | |
| Current Draw | 300 mA /ft | 150 mA /ft | 350 mA/ft | 175 mA /ft |
| Brightness | 310 lm/ft | | 395 lm/ft | |
| Efficacy | 86 lm/W | | 94 lm/W | |
| Beam Angle | 120° | | | |
| Max Run | 24.6 ft (7.5 m) | 24.6 ft (7.5 m) | 16.4 ft (5 m) | 21.3 ft (6.5 m) |



T 866.811.5550

F 314.972.6202

email: commercial-sales@superbrightleds.com

www.superbrightleds.com/cat/industrial-led-lighting/



Specifications are subject to change without notice.

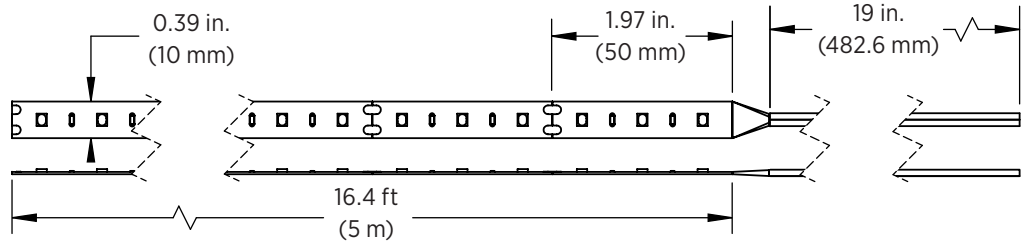
HighLight LED Strip Lights

2835 Strip Specifications

DIMENSIONAL DRAWINGS

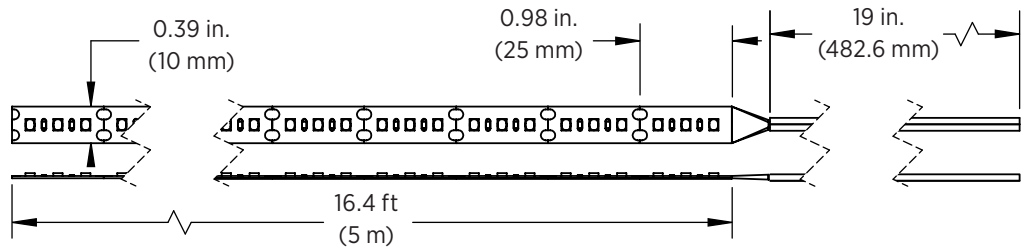
STN-AxK80-C3A-10B5M-12V

- 24.6 ft (7.5 m) max run



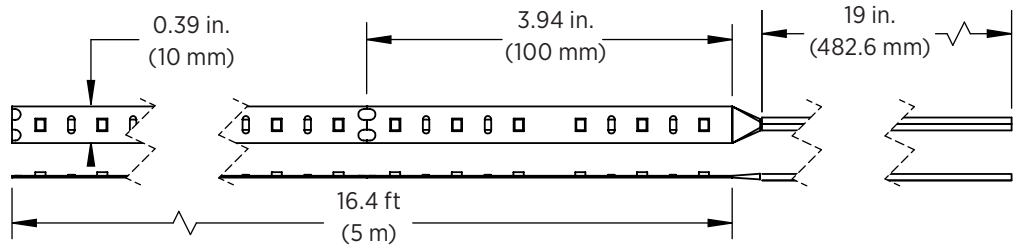
STN-AxK80-C3A-10C5M-12V

- 16.4 ft (5 m) max run



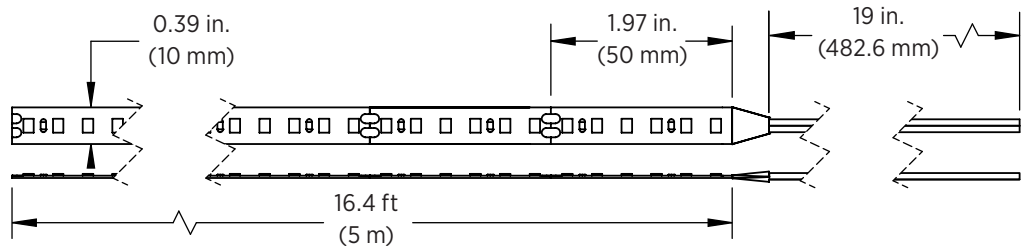
STN-AxK80-C6A-10B5M-24V

- 24.6 ft (7.5 m) max run



STN-AxK80-C6A-10C5M-24V

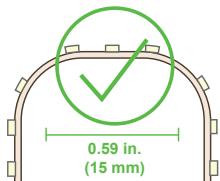
- 21.3 ft (6.5 m) max run



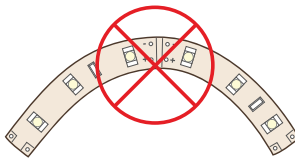
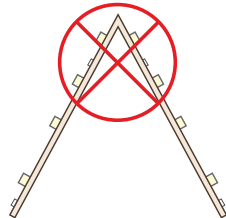
Note: The strip height for all strips shown is 0.06 in. (1.5 mm).

STRIP FLEXIBILITY

Bending strips at sharp angles will damage circuit traces and void warranty.



Bends less than 15mm will damage circuit traces and void warranty.



Bending strips on horizontal plane will damage circuit traces and void warranty.



Specifications are subject to change without notice.

T 866.811.5550

F 314.972.6202

email: commercial-sales@superbrightleds.com

www.superbrightleds.com/cat/industrial-led-lighting/

