



DVF Series

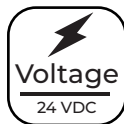
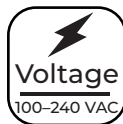
Metal Enclosed Constant Voltage Driver Specifications

Project _____

Date _____ Type _____



DVF-350W-24V-MB



Available Models¹

- ☐ DVF-350W-24V-MB
- ☐ DVF-350W-24V-MB(PowerCord)
- ☐ DVF-450W-24V-MB
- ☐ DVF-450W-24V-MB(PowerCord)

Part Number Breakdown

Example: DVF-350W-24V-MB(PowerCord)

Series	Output Wattage	Output Voltage	Hardware	Optional Accessory
DVF [DiodeDrive, Constant Voltage, Metal Enclosed]	350W [350W] or 450W [450W]	24V [24 VDC]	MB [Mounting Brackets]	blank [none] or (PowerCord) [Grounded Power Cord]

Overview

The DiodeDrive 24V constant voltage power supply is an enclosed, single-output power supply with a low-profile design. It features EMI filtration and integrated short-circuit, overload, overtemperature, and overvoltage protection. The 350W and 450W models use an internal cooling fan to prevent overheating. Easily connect LED lighting systems with the multi-tap screw terminals. The versatile power supplies have a switch to set either 120 or 240 VAC input before installation. The included mounting kit has 4x steel L-brackets and 4x steel M4 screws for easy installation. The input can be hardwired or connected using the optional power cord with a 5-15P plug.

Features

- Short-circuit, overload, and overvoltage protection
- Switch for 120V or 240V input
- Built-in EMI filtration
- Forced air cooling

Product Details

- Screw terminal block connections
- Durable metal housing
- Power ON LED indicator
- Non-dimmable
- 120-240 VAC input

Certifications and Complies

- UL Recognized - UL 8750 (FKSZ)
- CE and FCC compliant

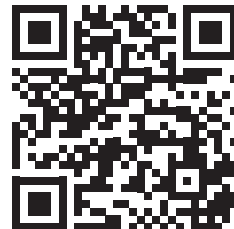


Applications

- Electronic Instruments
- Home Interiors
- Industrial Control Systems
- Mechanical Equipment
- Security Systems
- Sign Lighting
- Stage & Theaters
- Trade Shows
- Video Wall Displays

Warranty

- 5-year warranty



T 866.201.2238
F 314.972.6202
<https://www.diodedrive.com>
email: commercialsales@diodedrive.com

¹Contact customer service if interested in other options.

Rev V1.0 Date: 04/29/2025
Specifications are subject to change without notice.



DVF Series

Metal Enclosed Constant Voltage Driver Specifications

Specifications

Model		DVF-350W-24V	DVF-450W-24V
OUTPUT			
Output Power		350W	450W
Output Voltage ($\pm 1V$)		24 VDC	24 VDC
Output Current (max.)		14.6A	18.8A
Efficiency (25°C, 230 VAC)		$\geq 85\%$	$\geq 86\%$
Line Regulation		$\pm 0.5\%$	$\pm 0.5\%$
Load Regulation		$\pm 0.5\%$	$\pm 0.5\%$
Voltage Regulation Accuracy		$\pm 1\%$	$\pm 1\%$
Output Ripple and Noise (p-p)		$\leq 150mV$	$\leq 150mV$
Dynamic Response	Overshoot	5	5
		25-50% and 50-75% load dynamics, half-wave period of 4mS, current change slope of 0.1A/ μ S	
	Recovery Time (μ S)	400	400
Power-on/off Overshoot Amplitude		$\leq \pm 10\%$	$\leq \pm 10\%$
Power-on Output Delay (ss)		≤ 3	≤ 3
INPUT			
Input Voltage		100-240 VAC	
		Models above 100W output are 100-120VAC/200-240VAC switch selectable	
Input Frequency		50/60Hz	
Input Current (max)	100 VAC @ full load	7.5A	12A
Inrush Current	230 VAC, (25°C cold start)	70A	80A
Standby Power Consumption		$\leq 5W$	$\leq 5W$
PROTECTIONS			
Overload		17-23A	22-25A
		Hiccup mode, automatically resets after fault condition is eliminated	
Overvoltage		27-30V	27-30V
		Voltage limiting, automatically resumes after restart	
Output Short Circuit		Power supply protection after output terminal short circuit, automatically resumes after short circuit removed	





DVF Series

Metal Enclosed Constant Voltage Driver Specifications

Specifications

ENVIRONMENTAL		
Environmental Rating		Suitable for Dry Locations, Non-weatherproof
Ambient Operating Temperature		-30 to 70°C (-22 to 158°F)
Storage Temperature		-30 to 80°C (-22 to 176°F)
Working Humidity		20-95% RH, non-condensing
Altitude		0-5000m
		Ambient temperature range decreases by 0.6°C for every 100m above 2000m
Atmospheric Pressure		70-106Kpa
Cooling Method		Forced Air
SAFETY and EMC		
Dielectric Strength	I/P-O/P	3000VAC/10mA/1min
	I/P-GND	1800VAC/10mA/1min
	O/P-GND	500VAC/10mA/1min
Insulation Resistance	I/P-O/P	≥10MΩ@ 500VDC (Under normal atmospheric pressure, relative humidity of 90%)
	I/P-GND	
	O/P-GND	
Standards		UL8750, CE
EMC Emission		Compliance to FCC Part 15
MECHANICAL		
MTBF		≥100000 hours (25°C, rated input, full load) [MIL-HDBK-217F]
Connection Type		Screw Terminal
Housing Material		Metal



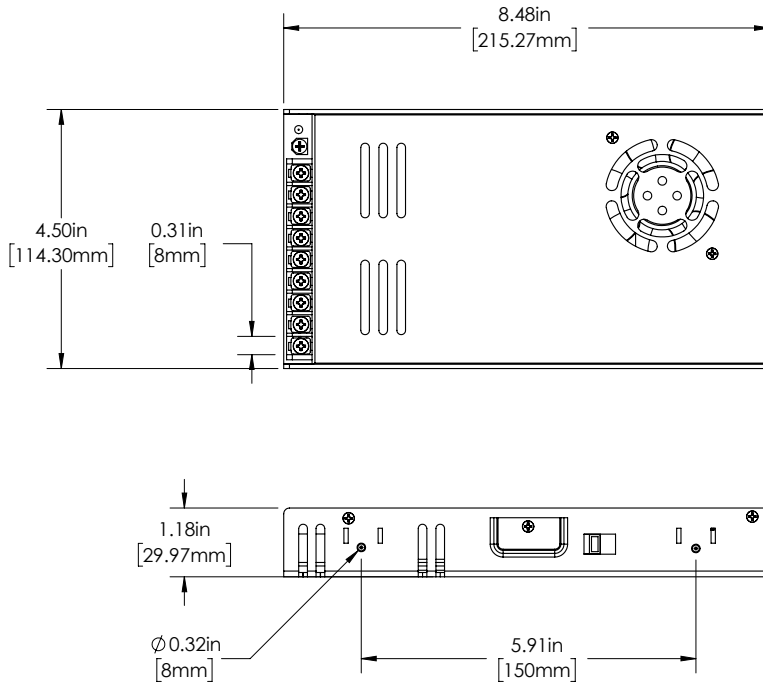


DVF Series

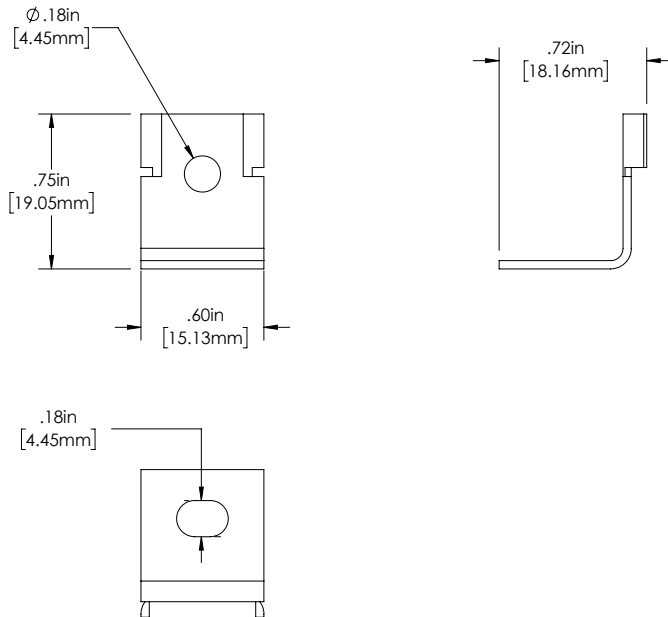
Metal Enclosed Constant Voltage Driver Specifications

Dimensional Drawings

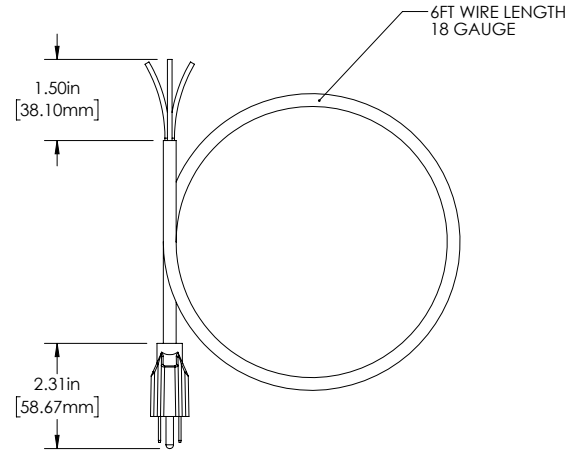
DVF-xW-24V-MB



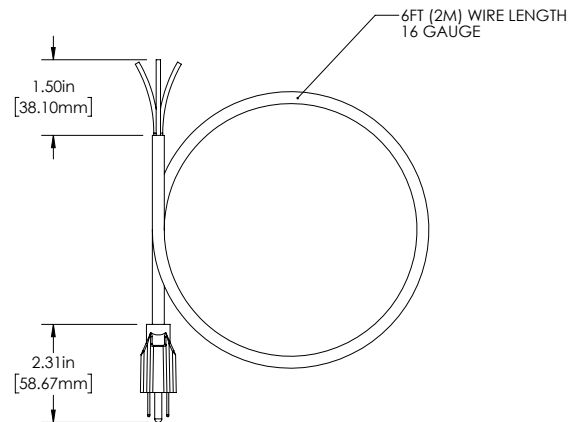
Mounting Brackets



18AWG Power Cord (350W)



16AWG Power Cord (450W)



T 866.201.2238
F 314.972.6202
<https://www.diodedrive.com>
email: commercialsales@diodedrive.com

Rev V1.0 Date: 04/29/2025
Specifications are subject to change without notice.