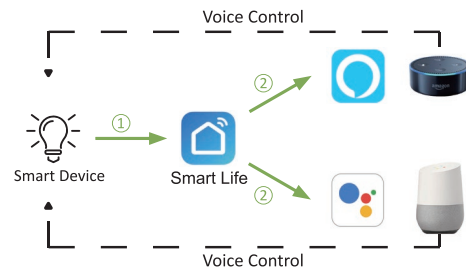


# Smart Light

## User Manual



## PREVIEW



How to connect with Smart Life App ... (page 1-5)

How to connect with Alexa ... (page 6-8)

How to connect with Google Home ... (page 9-10)

### English

## One —How to pair the light to Smart Life app?



### Step A : Smart Life app installation

Please choose either way below to download and install the app.

(1) As per your phone system, choose the QR code to scan.

(2) Search keyword 'Smart Life' in App Store or Google Play.

### Step B: Create an account on Smart Life and login.

Note: Please keep your account and password in mind for later Pairing with Alexa or Google Assistant App.

Make sure the 2.4GHz network is available before connect, if you're not sure whether you WiFi is 2.4GHz or 5GHz, just check the back of the router, input admin IP address to browser then close 5GHz band.

### 3 way to connect with smart life APP

1. EZ mode pair
2. AP mode pair
3. Hotspot pair

### English

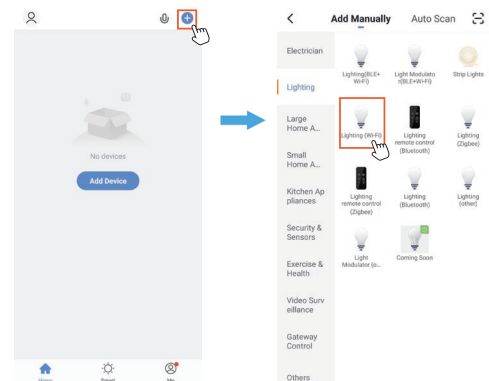
1.1, EZ mode means the bulb will flash quickly  
EZ mode — click switch for 3 times (turn on off on off on)

2.1, AP mode means the bulb will flash slowly  
Ap mode — When the light is fast flashing, repeat turn on/off 3 times to make the light slowly flash

3.1, Hotspot pair needs 2 smart phone, one as router, choose EZ mode

### Step C : Add the light to Smart Life App

1. Tap '+' button on top right corner to add device, then tap 'lighting devices' to enter to next page.



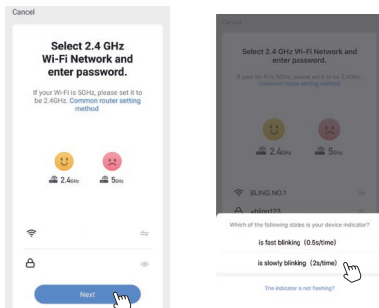
## English

(2) Observe how frequently the light blinks to identify which mode it is in.



(3) Confirm the light is in EZ Mode, then tap 'confirm' button to proceed. If any question, tap 'view help' for more details.

**Step D :** Make sure that you are using 2.4GHz WiFi network.  
Status: detectable

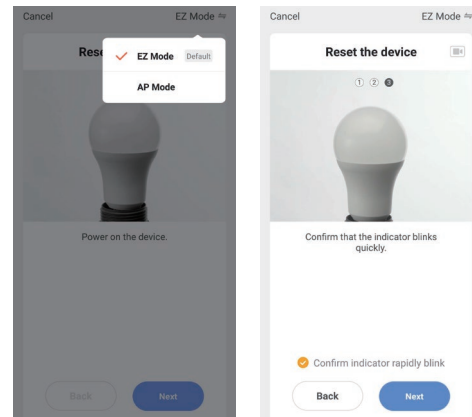


Note: Please choose the option according to the light status.

3

## English

**Step E :** Make sure that you are using 2.4GHz WiFi network.  
Status: detectable



Make sure that you are using 2.4GHz WiFi network.  
Status: detectable

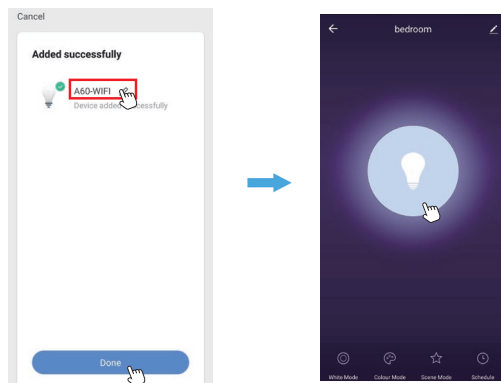
4

## English

**Step F :** name the light.

- A simple name is recommended for easier voice recognition with Alexa or Google Assistant.
- The name given to the light will be the same for voice control on Alexa or Google Assistant. For example, the light is named 'smart light' on this user guide.

**Step G :** The named light will be shown on the app homepage. Now you can control the light (turn on/off, change colors, adjust brightness etc.) with Smart Life on the setting page. Turn on or off the light by tapping the bulb icon.



Note: To control the light with Amazon Alexa, please read Part Two. To control the light with Google Assistant, please read Part Three directly.

5

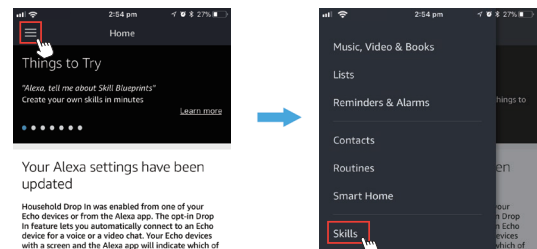
## English

### Two —How to control the light with Amazon Alexa?

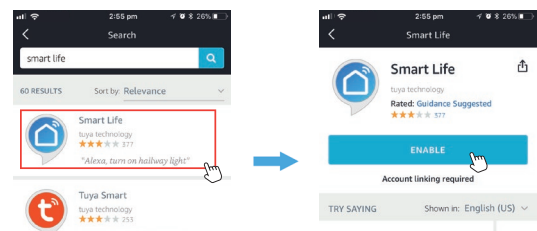


Please make sure that your Alexa app is connected to Echo, and both work well under your WiFi network.

**Step A :** Log in your Alexa App, tap top left corner, and tap 'Skills'.



**Step B :** Type 'Smart Life', find 'Smart Life' from the search result and tap it to enable the skill.

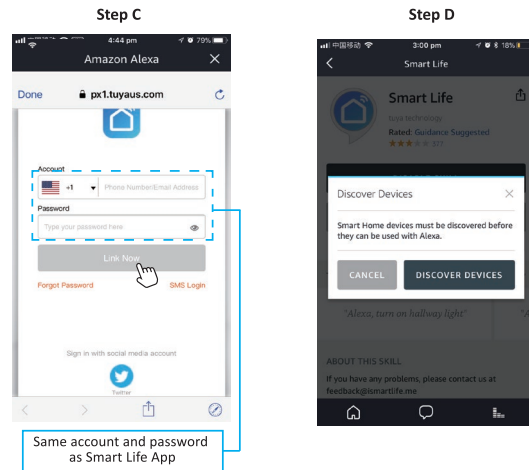


6

## English

**Step C :** Enter your Smart Life App account and password. Tap 'Link Now', then tap 'Authorize' on the next page to bind Smart Life account to Alexa.

**Step D :** When your Smart Life account is bound to Alexa, tap 'DISCOVER DEVICES' to detect the light.



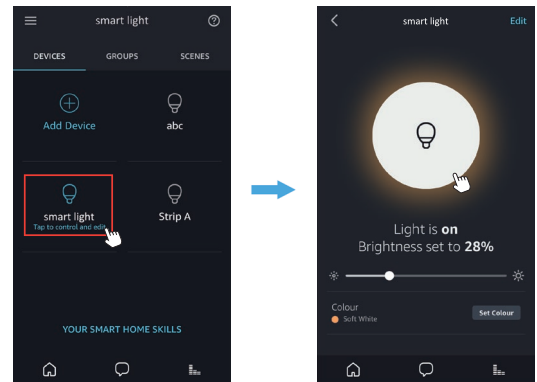
**Step E :** When the named light is paired to Alexa from Smart Life, it will show on the device page (see the 'smart light' example ).

7

## English

**Step F :** Now you can control the light with Alexa App on the setting page. To turn on or off the light, simply tap the bulb icon.

**Step G :** You can also voice control the light with Alexa by giving these commands: "Alexa, turn on 'device name' ", "Alexa, set 'device name' to 'color' ", "Alexa, set 'device name' to 'number' ". Device name is the one you give to the light. The light is named 'smart light' in this user guide. For example, "Alexa, turn on 'smart light' ", "Alexa, set 'smart light' to 'blue' " etc.



Note: To control the light with Google Assistant, please continue to read Part Three.

8

## English

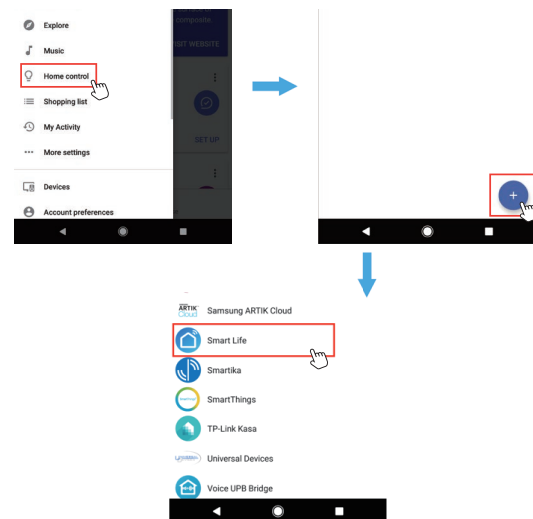
### Three—How to control the light with Google Assistant?



**Step A :** Login Google Assistant App, tap 'Home Control' on the left side bar page.

**Step B :** Tap '+' button on the bottom right to enter next page.

**Step C :** Find 'Smart Life' from side bar list.



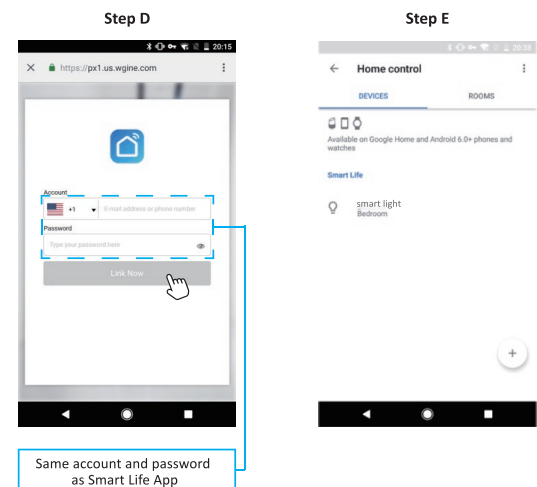
9

## English

**Step D :** Enter your Smart Life App account and password to bind Smart Life account to Google Assistant.

**Step E :** You will find the named light shows on the Home Control page. Now you can control the light on Google Assistant App, or voice control it by giving these commands: "ok Google, turn on 'device name' ", "ok Google, set 'device name' to 'color' ", "ok Google, set 'device name' to 'number' ".

Device name is the one you give to the light. The light is named 'smart light' in this user guide. For example, "ok Google, turn on 'smart light' ", "ok Google, set 'smart light' to 'blue' " etc.



10

### FCC Statement:

This equipment has been tested and found to comply with the limits for a Class B digital device, pursuant to part 15 of the FCC Rules. These limits are designed to provide reasonable protection against harmful interference in a residential installation. This equipment generates, uses and can radiate radio frequency energy and, if not installed and used in accordance with the instructions, may cause harmful interference to radio communications. However, there is no guarantee that interference will not occur in a particular installation. If this equipment does cause harmful interference to radio or television reception, which can be determined by turning the equipment off and on, the user is encouraged to try to correct the interference by one or more of the following measures:

- Reorient or relocate the receiving antenna.
- Increase the separation between the equipment and receiver.
- Connect the equipment into an outlet on a circuit different from that to which the receiver is connected.
- Consult the dealer or an experienced radio/TV technician for help.

Caution: Any changes or modifications to this device not explicitly approved by manufacturer could void your authority to operate this equipment.

This device complies with part 15 of the FCC Rules. Operation is subject to the following two conditions: (1) This device may not cause harmful interference, and (2) this device must accept any interference received, including interference that may cause undesired operation.

This equipment complies with FCC radiation exposure limits set forth for an uncontrolled environment.

This equipment should be installed and operated with minimum distance 20cm between the radiator & your body.