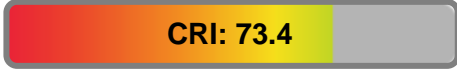


Light efficiency:



Output: 8037 lm

Light quality:



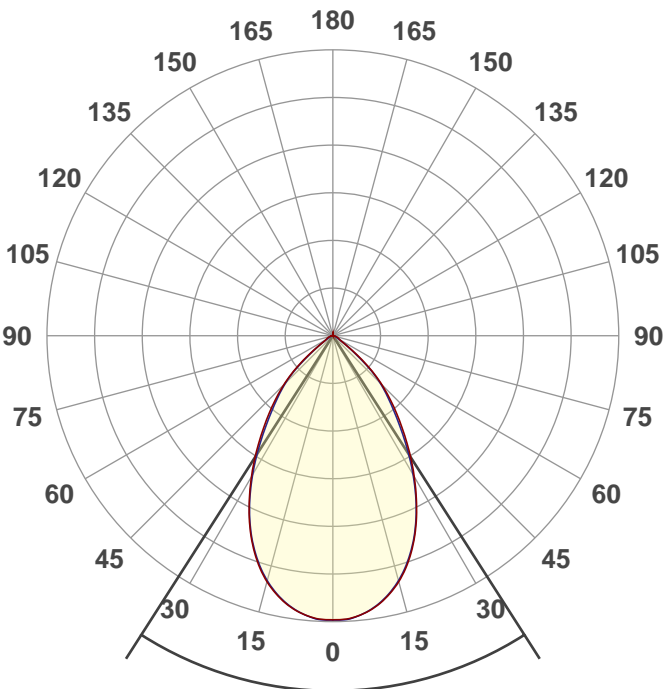
Peak: 6645 cd

Color temperature:



Power: 60.8 W

PF: 0.99



Product name:

WPRCCT-SW3B60-WST1-BRP

Light Head Aiming:

**both in default position,
facing straight down**

Date and time:

3/9/2021 9:01:07 AM

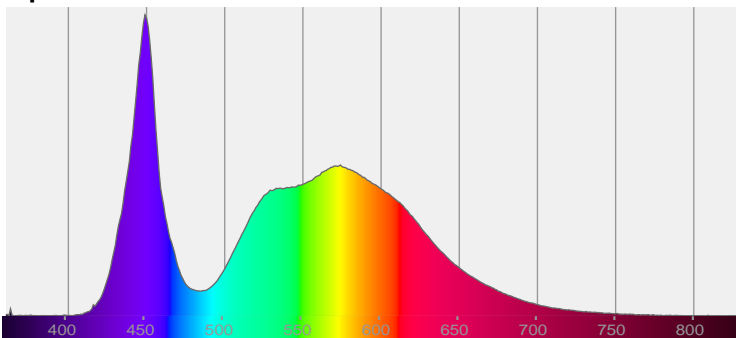
Beam angle

65.3°

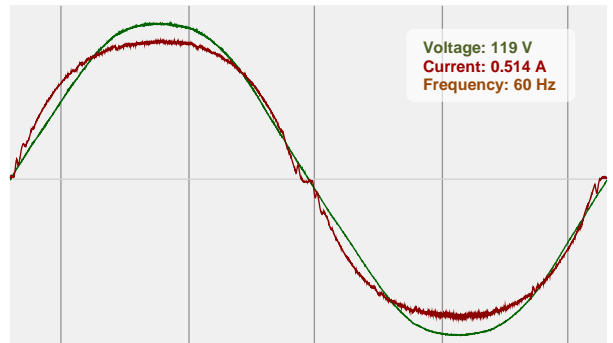


CIE 1931
x: 0.333
y: 0.333

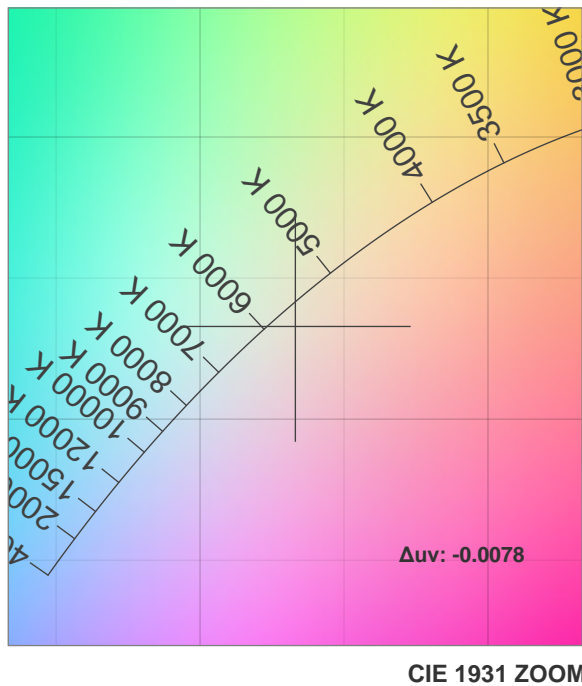
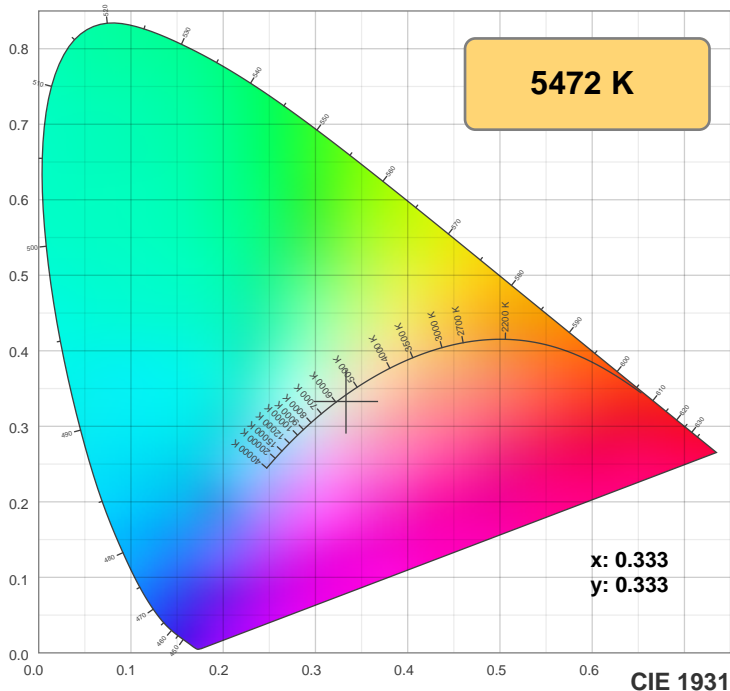
Spectra



Power

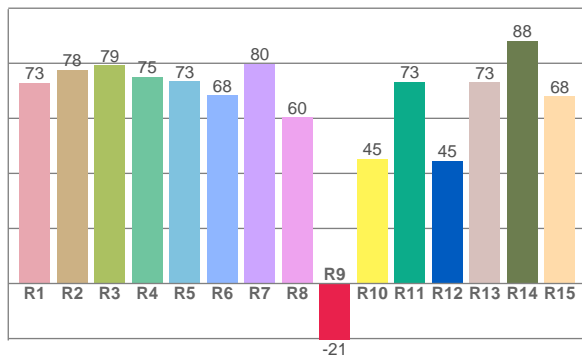
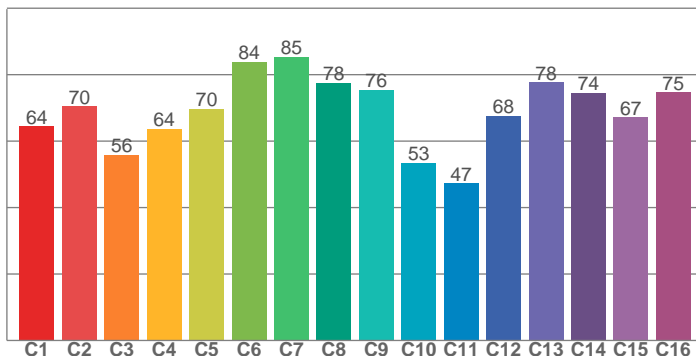


Color Specifications



TM30: 68.6

CRI: 73.4 (R1-R8)



CRI R values, only R1-R8 are used to calculate final CRI value

R1	R2	R3	R4	R5	R6	R7	R8	R9	R10	R11	R12	R13	R14	R15
73.0	77.7	79.4	75.2	73.4	68.4	79.9	60.5	-20.7	45.3	73.3	44.6	73.1	88.1	68.1

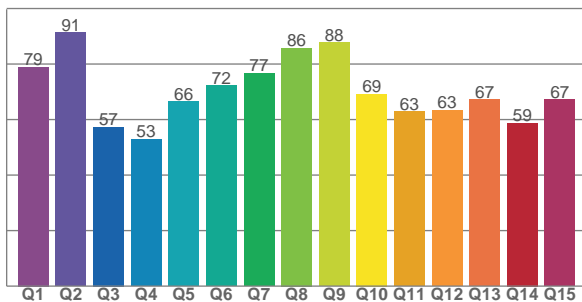
TM30 C values, 16 binned values out of total of 99 C values

C1	C2	C3	C4	C5	C6	C7	C8	C9	C10	C11	C12	C13	C14	C15	C16
64.5	70.5	56.0	63.7	69.7	83.8	85.4	77.6	75.5	53.4	47.3	67.6	77.7	74.5	67.2	74.7

CQS Q values

Q1	Q2	Q3	Q4	Q5	Q6	Q7	Q8	Q9	Q10	Q11	Q12	Q13	Q14	Q15
79.0	91.3	57.3	52.9	66.4	72.2	76.7	85.8	87.7	69.2	62.8	63.3	67.2	58.7	67.1

CQS: 68.5



Color parameters

Color temperature	Color rendering index	Red component	Color fidelity	Color gamut	Color quality scale	Color coordinate cie 1931	Color coordinate cie 1931	Color coordinate	Color coordinate	Color deviation from black body
CCT	CRI	CRI R9	TM30 Rf	TM30 Rg	CQS	x	y	u	v	Δuv
5472 K	73.4	-20.7	68.6	95.6	68.5	0.333	0.333	0.211	0.316	-0.0078

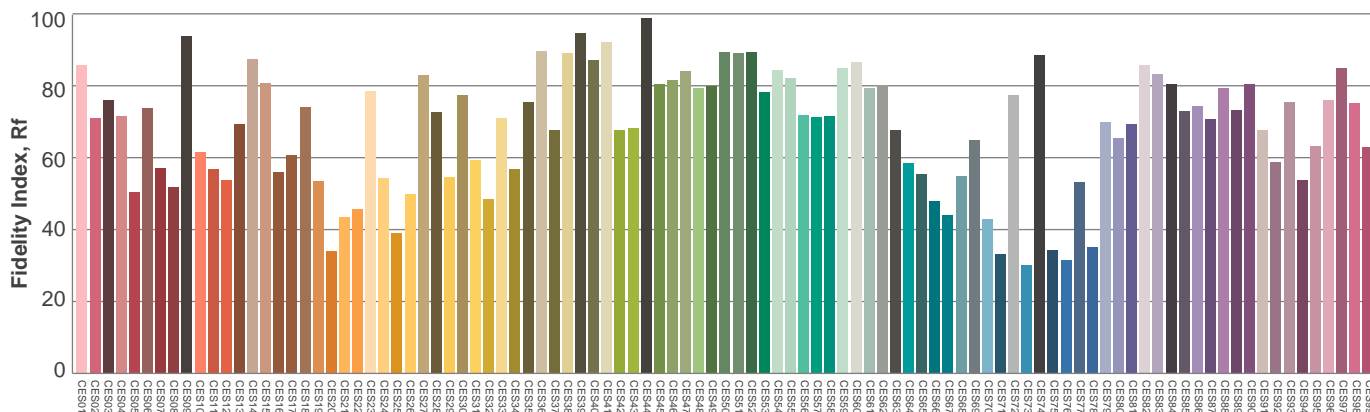
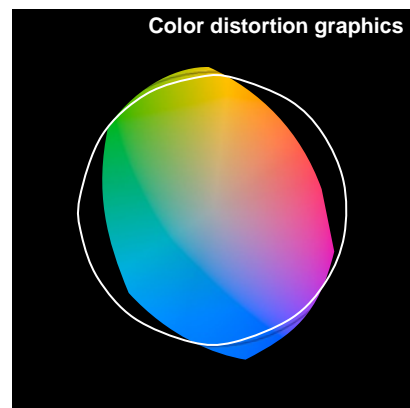
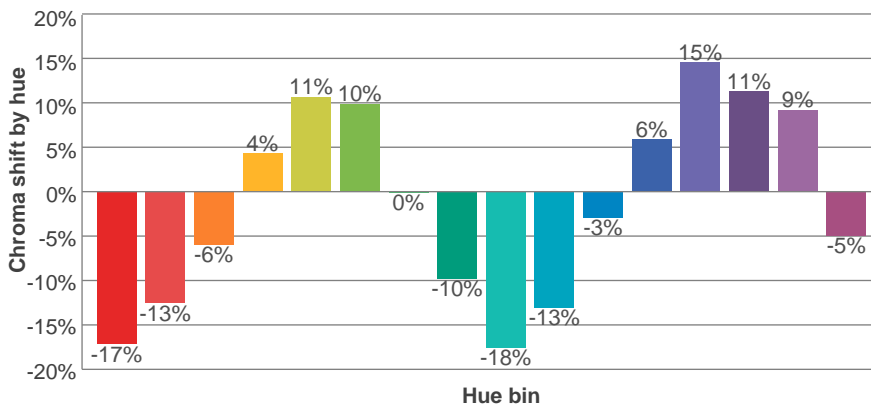
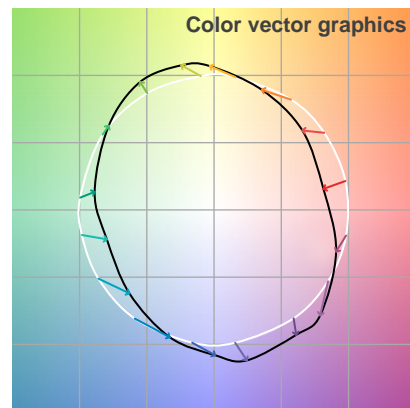
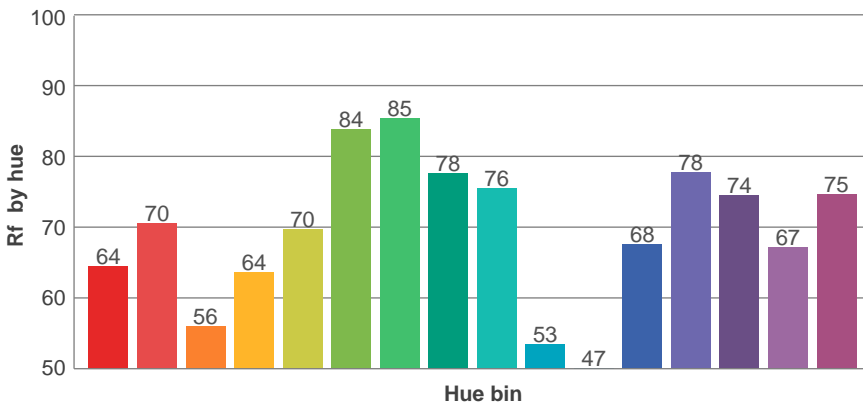
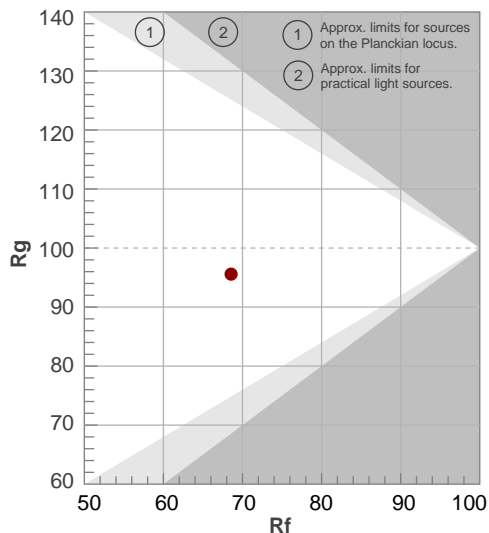


TM30 Report

Rf 68.6
Fidelity index Rf

Rg 95.6
Gammut index Rg

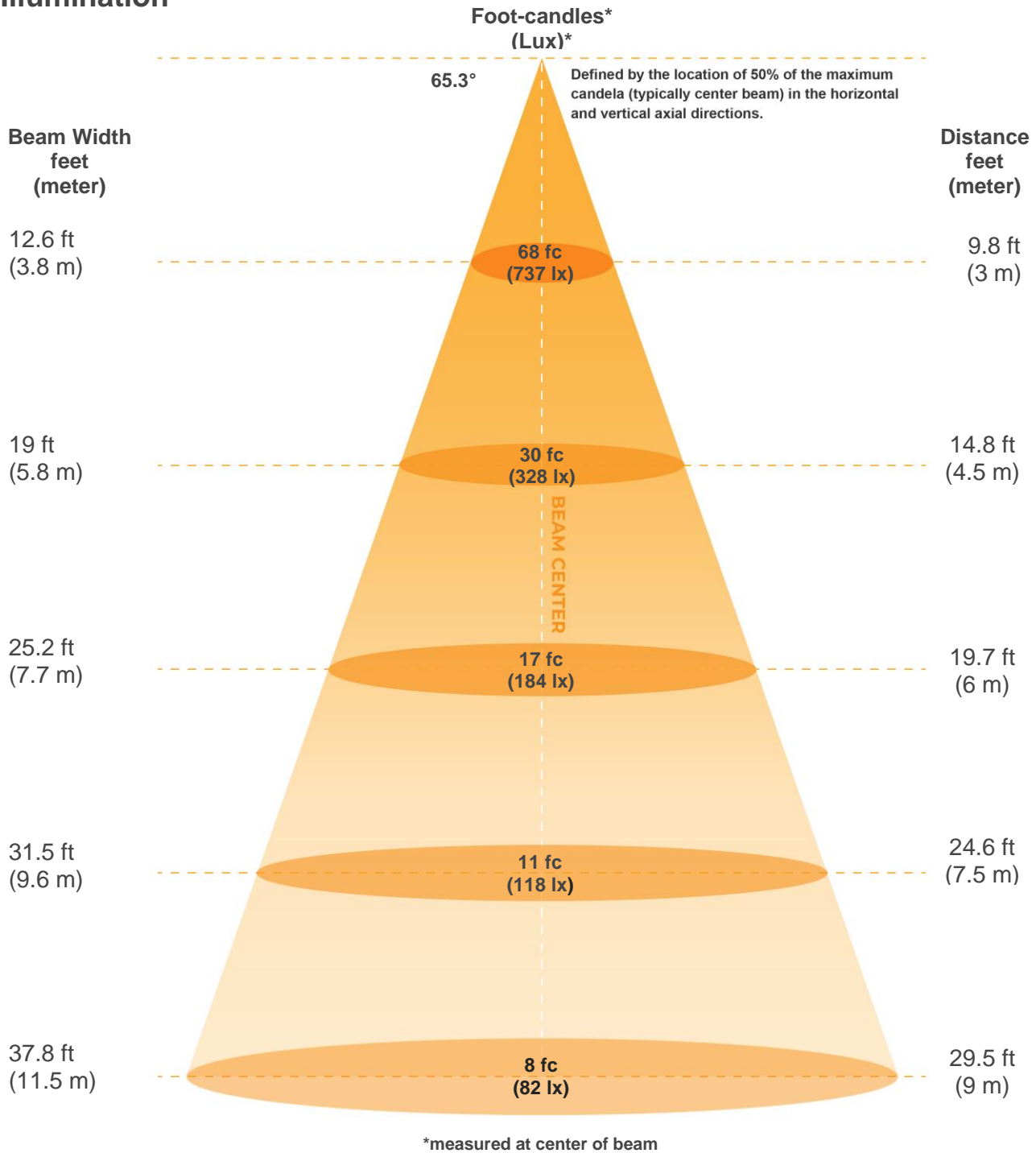
Hue Bin	R _f	Graphic shifts (%)	
		Chroma	Hue
1	64	-17%	-3%
2	70	-13%	10%
3	56	-6%	22%
4	64	4%	20%
5	70	11%	13%
6	84	10%	0%
7	85	0%	-8%
8	78	-10%	-6%
9	76	-18%	7%
10	53	-13%	22%
11	47	-3%	29%
12	68	6%	19%
13	78	15%	6%
14	74	11%	-5%
15	67	9%	-24%
16	75	-5%	-13%



Color Evaluation Sample



Illumination



Beam intensities from 1-20m

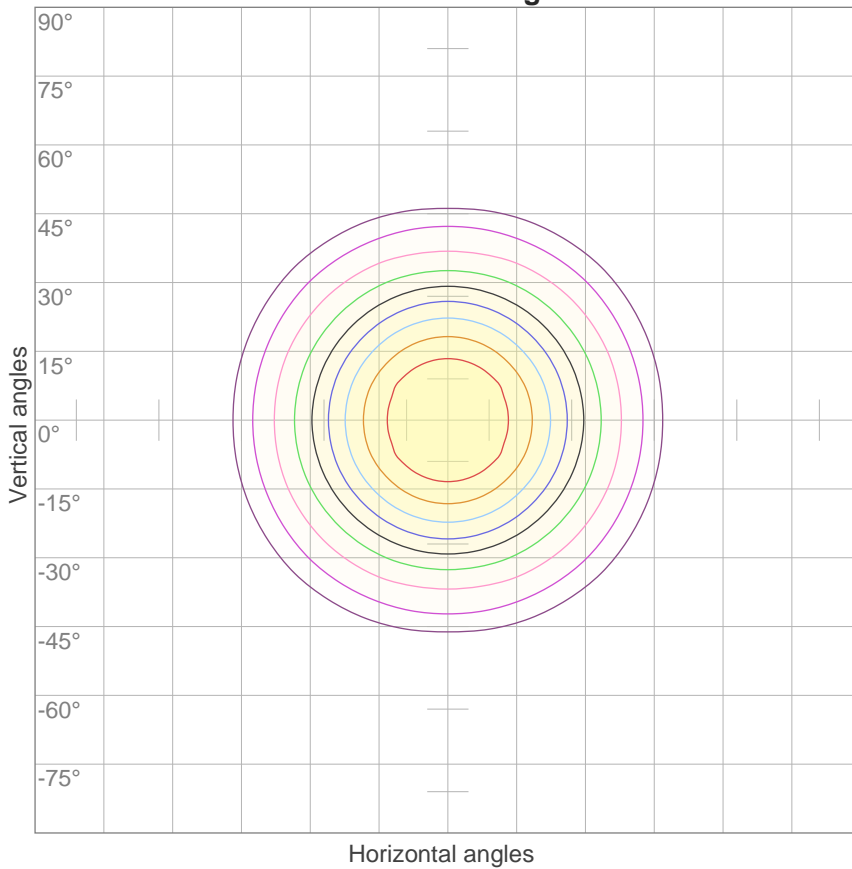
1m	2m	3m	4m	5m	6m	7m	8m	9m	10m	11m	12m	13m	14m	15m	16m	17m	18m	19m	20m
3.3ft	6.6ft	9.8ft	13.1ft	16.4ft	19.7ft	23ft	26.2ft	29.5ft	32.8ft	36.1ft	39.4ft	42.7ft	45.9ft	49.2ft	52.5ft	55.8ft	59.1ft	62.3ft	65.6ft
6634lx	1659lx	737lx	415lx	265lx	184lx	135lx	104lx	82lx	66lx	55lx	46lx	39lx	34lx	29lx	26lx	23lx	20lx	18lx	17lx
616.3fcd	154.1fcd	68.5fcd	38.5fcd	24.7fcd	17.1fcd	12.6fcd	9.6fcd	7.6fcd	6.2fcd	5.1fcd	4.3fcd	3.6fcd	3.1fcd	2.7fcd	2.4fcd	2.1fcd	1.9fcd	1.7fcd	1.5fcd

Beam angle 50%	Field angle 10%	Cutoff angle 2,5%	Intensity ratio in 120° cone	Intensity ratio in 90° cone
65.3°	104.3°	122.2°	97.2%	86.0%



ISO Diagrams

ISO candela diagram



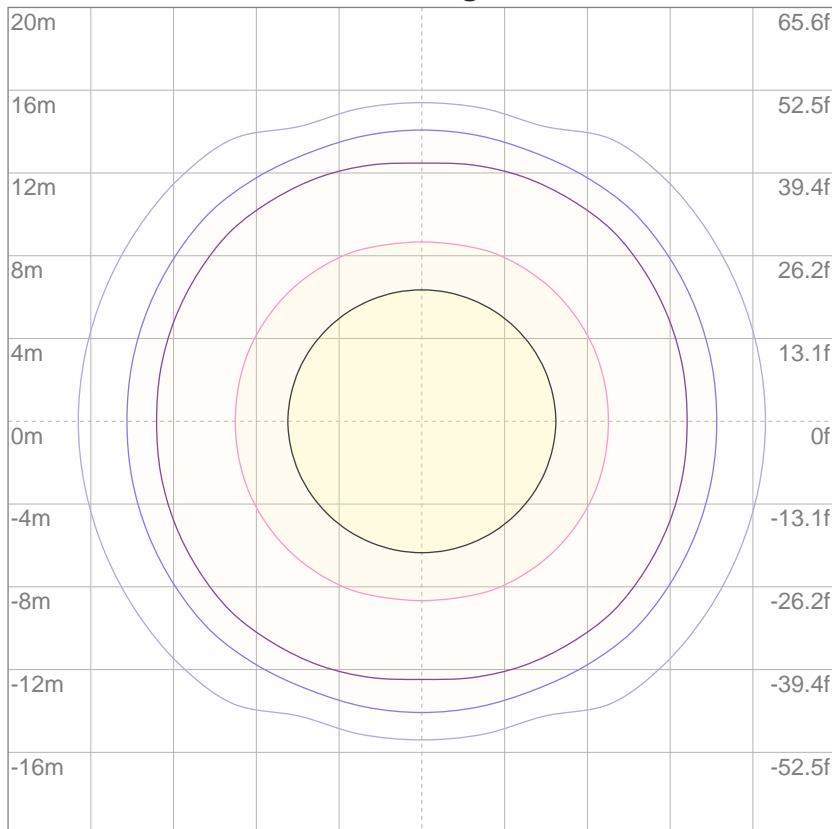
10%	663 cd
20%	1327 cd
30%	1990 cd
40%	2654 cd
50%	3317 cd
60%	3981 cd
70%	4644 cd
80%	5307 cd
90%	5971 cd

Conditions:

Number of c-planes: 16

Candela at center: 6634 cd

ISO lux diagram



3%	1.99 lx
5%	3.32 lx
10%	6.63 lx
30%	19.9 lx
50%	33.2 lx

Conditions:

Number of c-planes: 16

Lux at center: 66.3 lx

Lux distribution on a surface when lamp is mounted at 10 meters from the surface.

Mounting height: 10 meters (33 feet)



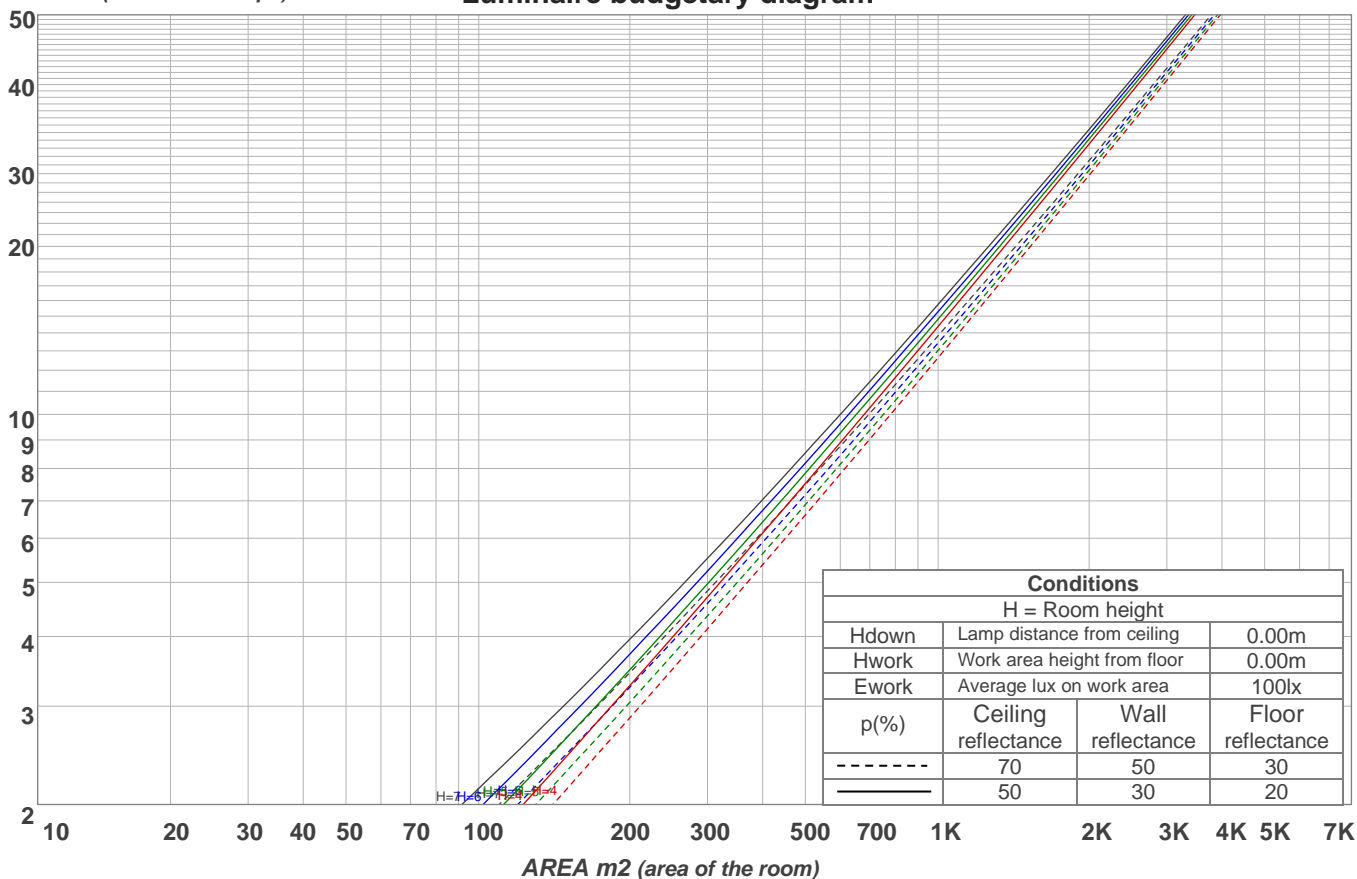
Light Planning

Coefficients of Utilization

Ceiling reflectance	80				70				50			30			10			0	
Wall reflectance	70	50	30	10	70	50	30	10	50	30	10	50	30	10	50	30	10	0	
Floor reflectance	20	20	20	20	20	20	20	20	20	20	20	20	20	20	20	20	20	20	0
RCR	(RCR: Room Cavity Ratio)																		
	Room Values are expressed as percentage of Lumens delivered to the task surface																		
0	119	119	119	119	116	116	116	116	111	111	111	106	106	106	102	102	102	100	
1	112	109	106	104	110	107	104	102	103	101	99	99	97	96	96	94	93	91	
2	106	100	95	92	103	98	94	90	95	91	88	92	89	86	89	87	85	83	
3	99	92	86	82	97	90	85	81	88	83	80	85	81	78	83	80	77	75	
4	93	85	78	73	91	83	77	73	81	76	72	79	75	71	77	73	70	68	
5	88	78	71	66	86	77	71	66	75	70	65	73	69	65	72	68	64	63	
6	82	72	65	61	81	71	65	60	70	64	60	68	63	59	67	62	59	57	
7	78	67	60	56	76	66	60	55	65	59	55	64	59	55	62	58	54	53	
8	73	63	56	51	72	62	55	51	61	55	51	60	54	50	59	54	50	49	
9	69	58	52	47	68	58	52	47	57	51	47	56	51	47	55	50	47	45	
10	66	55	48	44	64	54	48	44	53	48	44	53	47	44	52	47	43	42	

LAMPS (number of lamps)

Luminaire budgetary diagram



Zonal Lumen Summary

0°-10°	10°-20°	20°-30°	30°-40°	40°-50°	50°-60°	60°-70°	70°-80°	80°-90°
619 lm	1655 lm	2099 lm	1833 lm	1223 lm	383 lm	122 lm	55.2 lm	12.1 lm
90°-100°	100°-110°	110°-120°	120°-130°	130°-140°	140°-150°	150°-160°	160°-170°	170°-180°
2.72 lm	2.80 lm	3.36 lm	4.64 lm	5.72 lm	6.06 lm	5.54 lm	3.93 lm	1.43 lm

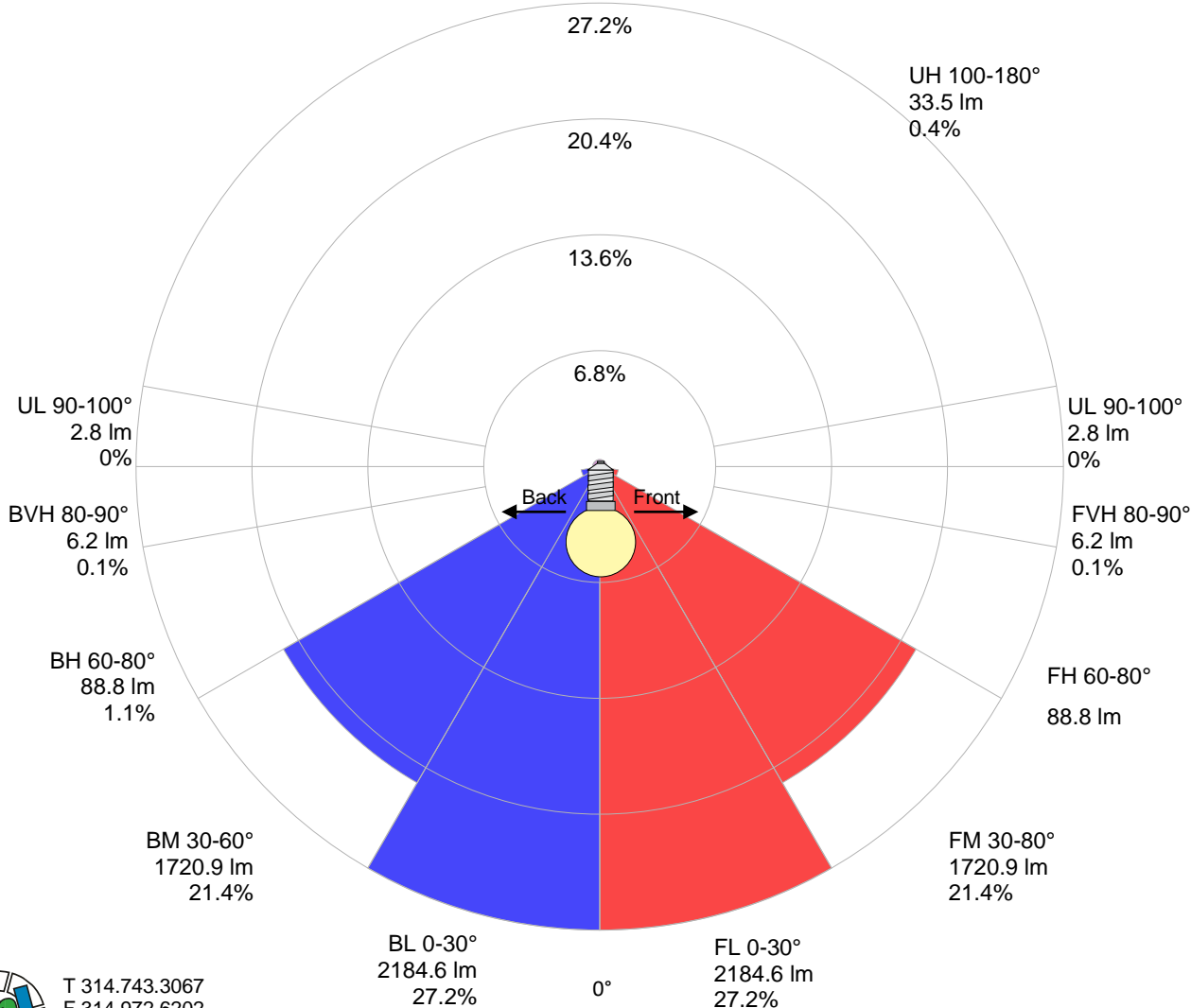


Road Report

LCS table

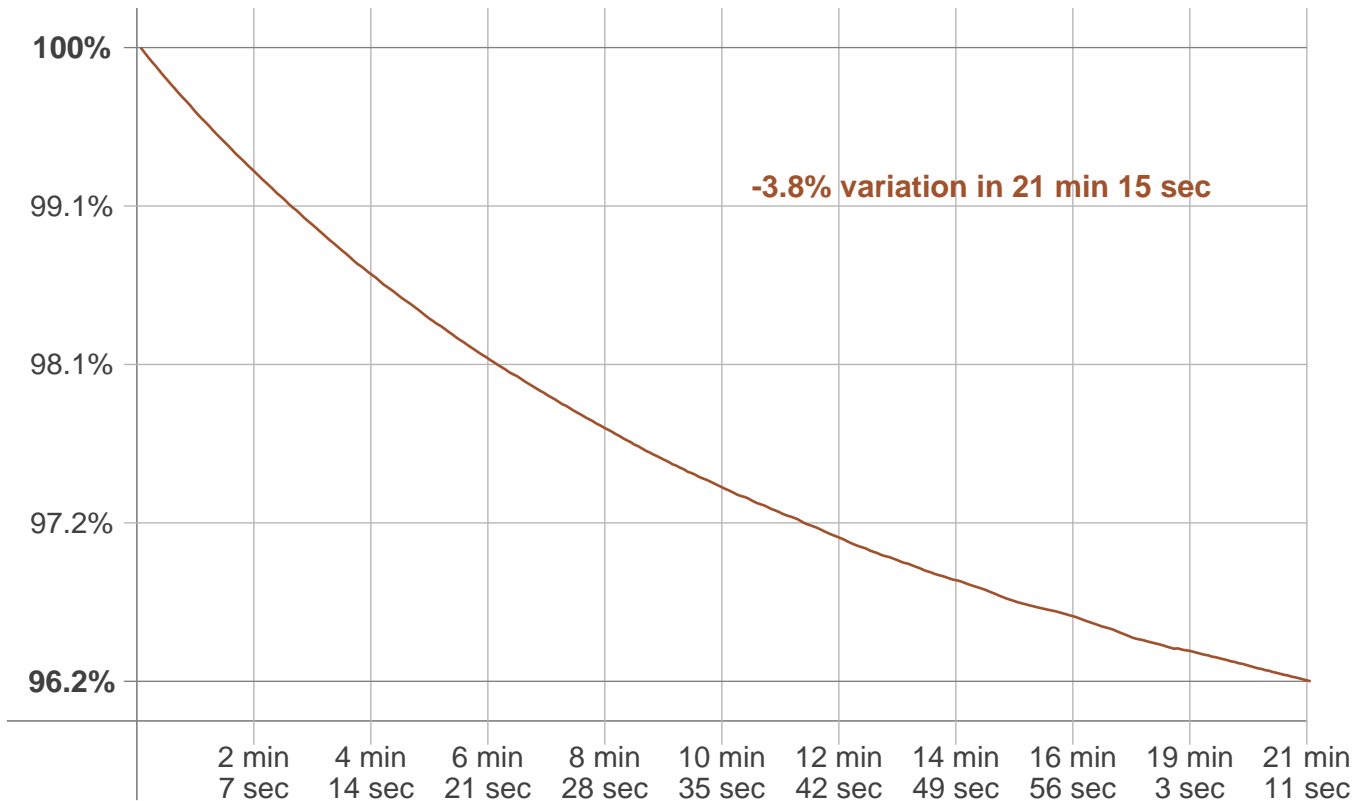
BUG rating:	B3 U2 G0	
Forward light	Lumens	Lumens %
Low(0-30):	2184.6	27.2%
Medium(30-60):	1720.9	21.4%
High(60-80):	88.8	1.1%
Very high(80-90):	6.2	0.1%
Back light		
Low(0-30):	2184.6	27.2%
Medium(30-60):	1720.9	21.4%
High(60-80):	88.8	1.1%
Very high(80-90):	6.2	0.1%
Uplight		
Low(90-100):	2.8	0%
High(100-180):	33.5	0.4%

LCS graph



Stabilization

Warmup curve



Warmup result

Warmup time:	21 min 15 sec
Warmup variation	-3.8%

Warmup conditions

Stable period:	15 min
Stable change max:	2.0%
Minimum time:	15 min

Color temperature change

CCT start	CCT change	CCT end
5417 K	+55 K	5472 K

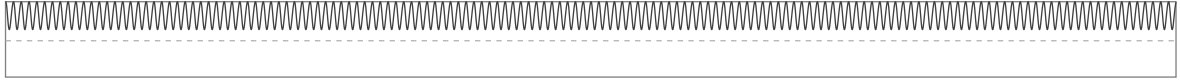
Output change

Output start	Output change	Output end
8348 lm	-311 lm	8037 lm

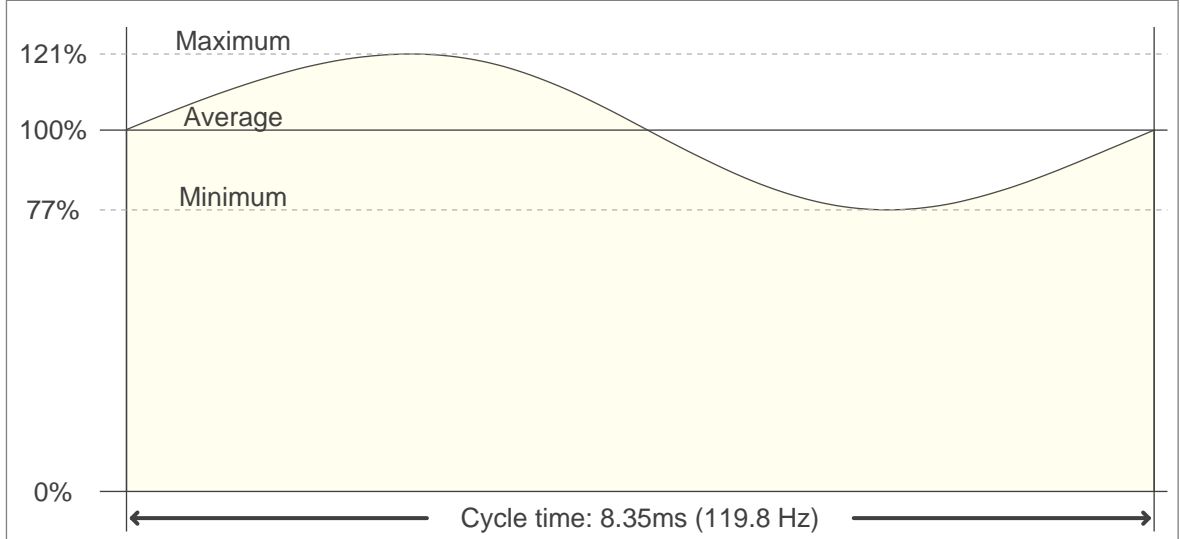


Flicker

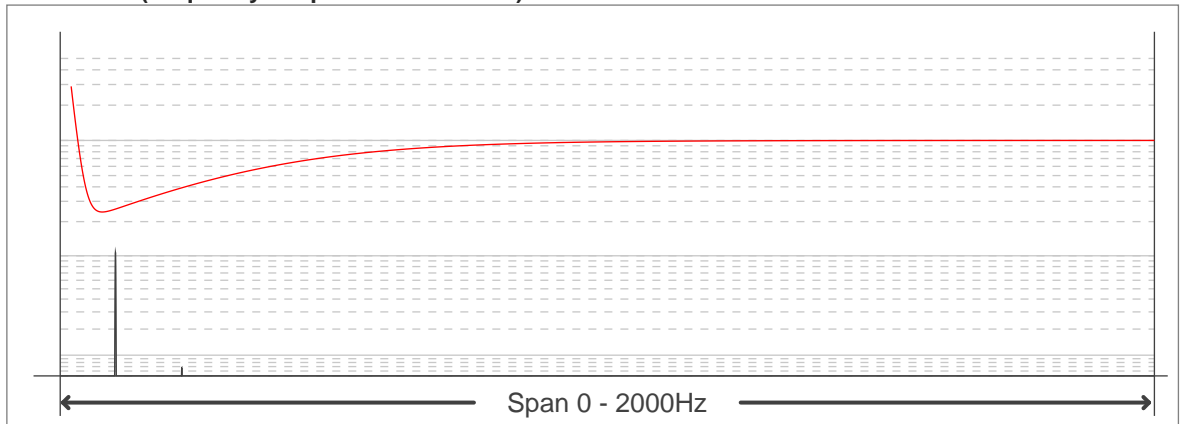
Flicker curve (complete sampled flicker signal)



Flicker frame (frame of one flicker period)



Flicker FFT (frequency scope of flicker curve)



Flicker results:

Flicker frequency:	119.76 Hz
Flicker index:	0.07
Flicker percentage:	21.73 %
SVM: (Visual flicker)	0.78

Flicker conditions:

Sample rate:	40000 samples/second
---------------------	-----------------------------

