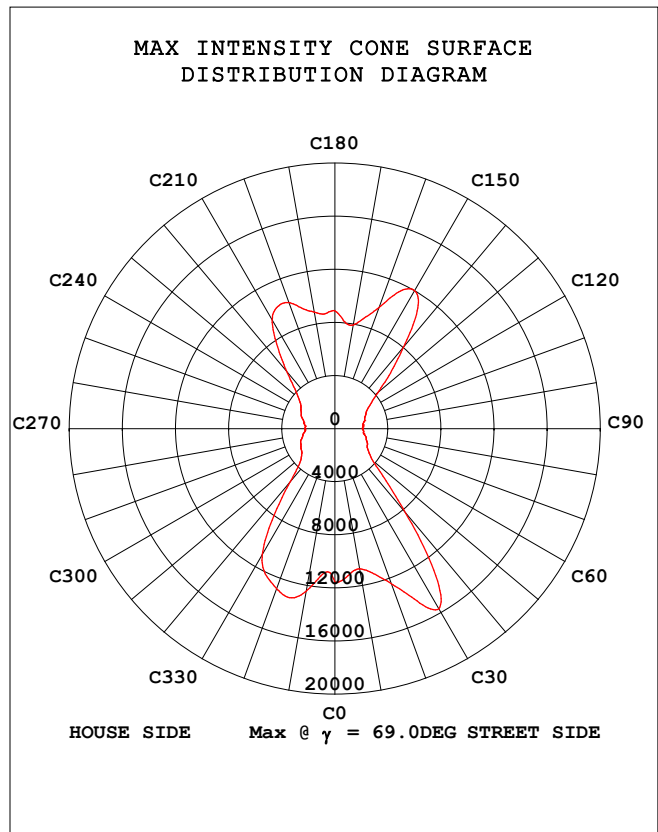
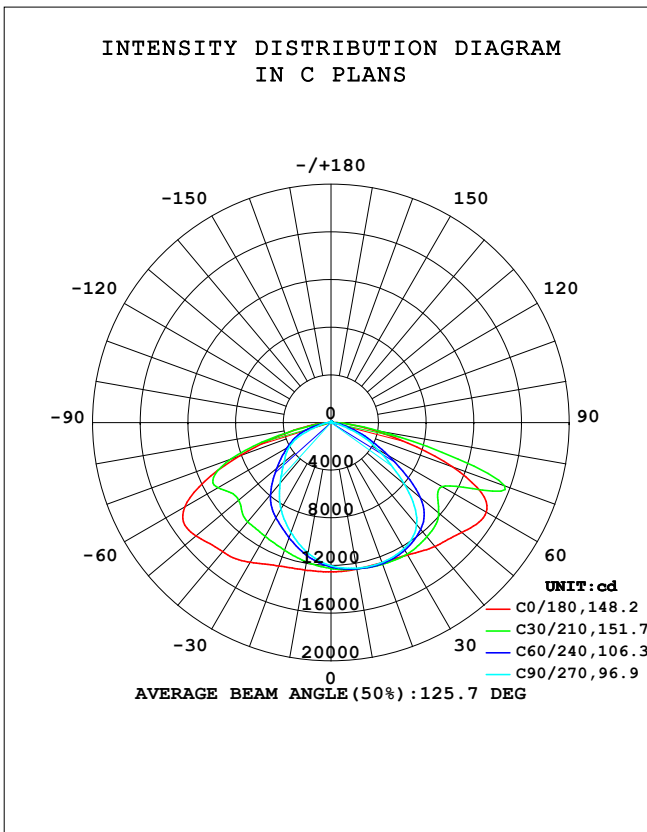


STREETLIGHT PHOTOMETRIC TEST REPORT

Test:U:244.22V I:1.2149A P:288.75W PF:0.9732 Freq:50.03Hz Lamp Flux:45721.9x1 lm		
NAME: ALDS2-SW3B300-xDS3	TYPE:	WEIGHT:
SPEC.:	DIM.:	SERIAL No.:
MFR.:	SUR.:	Shielding Angle:

DATA OF LAMP		PHOTOMETRIC DATA Eff: 158.34 lm/W			
MODEL	ALDS2-SW3B300-xDS3	I _{max} (cd)	15666	η street_up (%)	0.4
NOMINAL POWER (W)	300	LOR (%)	100.0	η street_down (%)	53.4
RATED VOLTAGE (V)	240	TOTAL FLUX (lm)	45722	η house_up (%)	0.6
NOMINAL FLUX (lm)	45721.9	MAXIMUM @ (C, γ)	30,69.0	η house_down (%)	45.6
LAMPS INSIDE	1	η up (%)	1.0	76 FLASHAREA (m2)	
TEST VOLTAGE (V)	240	η down (%)	99.0	SLI	

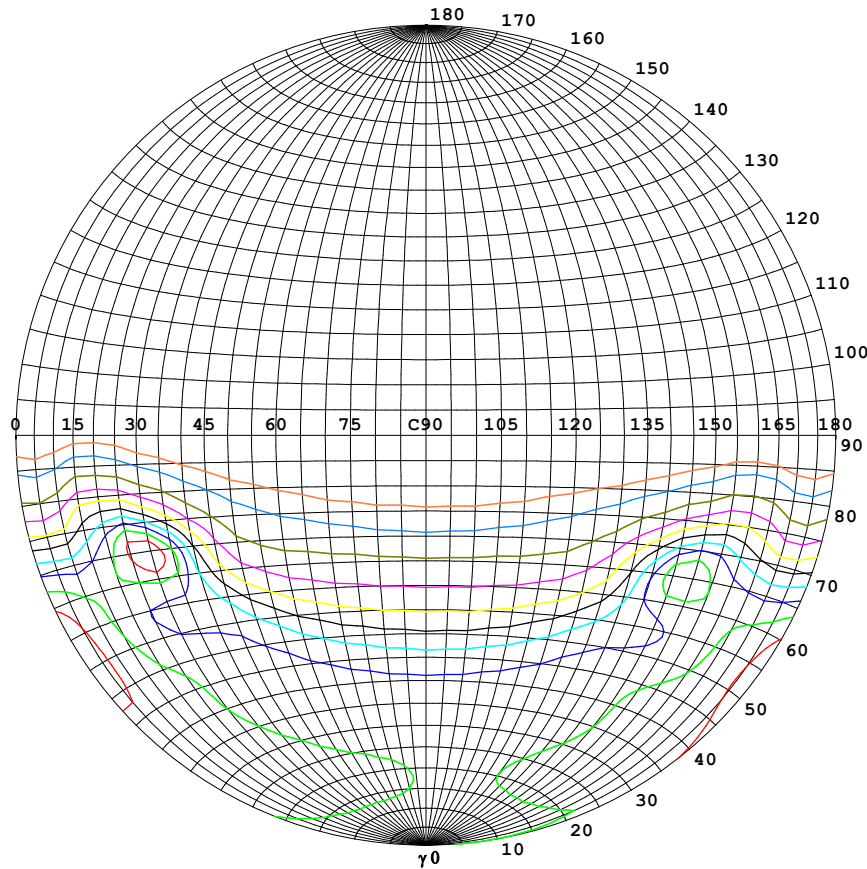


C Range: 0 - 360DEG
 C Interval: 5.0DEG
 Test Speed: HIGH
 Temperature:25.3DEG
 Operators:DAMIN
 Test Date:06 October 2023

γ Range: 0 - 180DEG
 γInterval: 1.0DEG
 Test System: GO-2000B_V1 SYSTEM V2.00.446
 Humidity:65.0%
 Test Distance:7.850m [K=1.0000]
 Remarks:

STREETLIGHT ISOCANDELA DIAGRAM

Test:U:244.22V I:1.2149A P:288.75W PF:0.9732 Freq:50.03Hz Lamp Flux:45721.9x1 lm		
NAME: ALDS2-SW3B300-xDS3	TYPE:	WEIGHT:
SPEC.:	DIM.:	SERIAL No.:
MFR.:	SUR.:	Shielding Angle:



Classification:

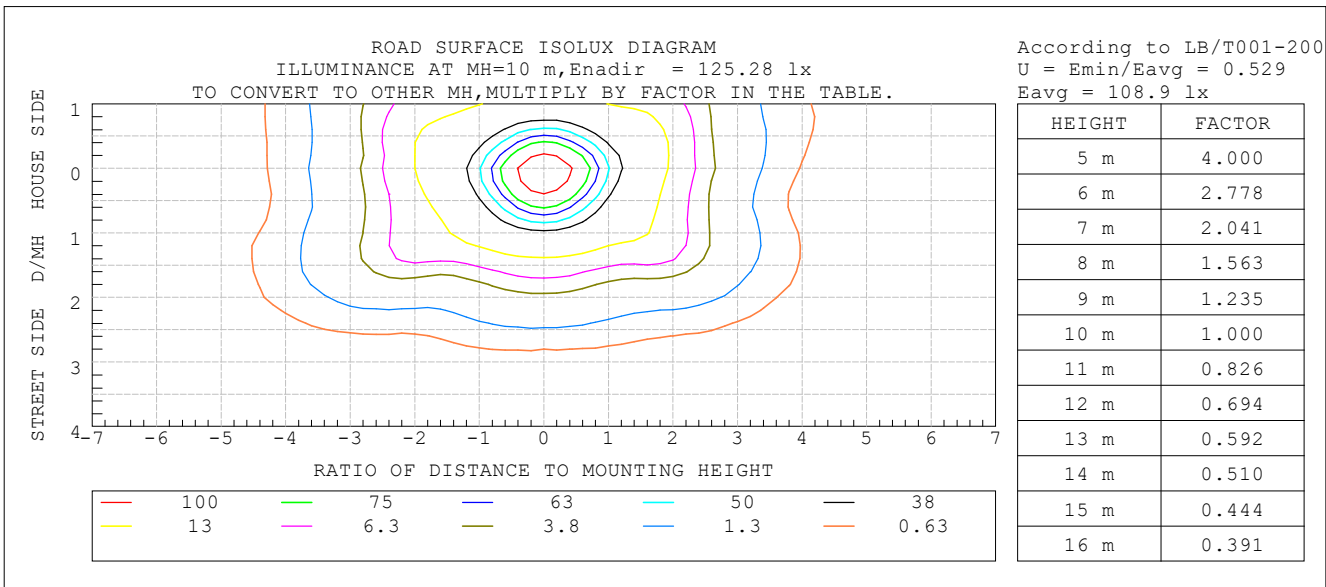
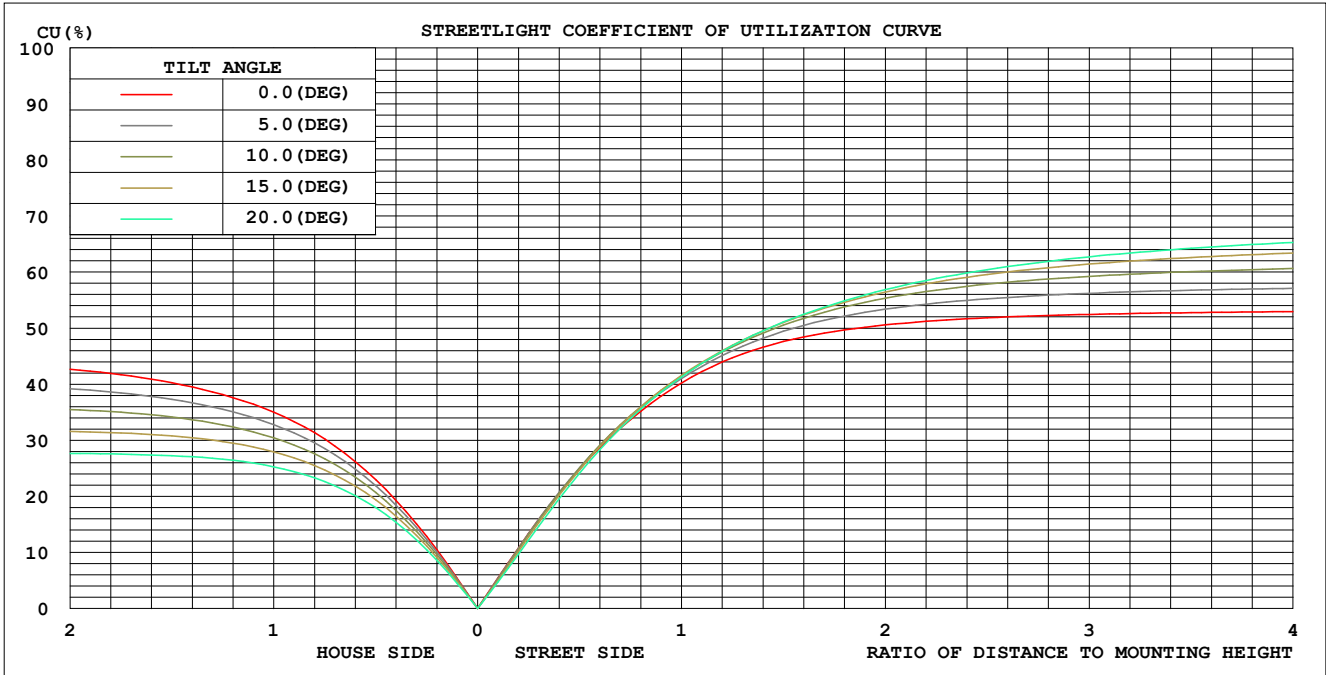
IES:Type III - Medium
 CIE:Broad - Intermediate
 IES:Semi cut-off
 CIE:Non-cut-off
 Max.At80:124.5cd/klm
 Max.At90:15.06cd/klm
 Max.80-90:124.5cd/klm
 NRB 5101:Semi limited[10.3%]

ISOCANDELA DIAGRAM	
UNIT	cd
I _{max} =100%	15666
90%	14099
80%	12533
70%	10966
60%	9400
50%	7833
40%	6266
30%	4700
20%	3133
10%	1567
5%	783

C Range: 0 - 360DEG
 C Interval: 5.0DEG
 Test Speed: HIGH
 Temperature:25.3DEG
 Operators:DAMIN
 Test Date:06 October 2023

γ Range: 0 - 180DEG
 γ Interval: 1.0DEG
 Test System: GO-2000B_V1 SYSTEM V2.00.446
 Humidity:65.0%
 Test Distance:7.850m [K=1.0000]
 Remarks:

COEFFICIENT OF UTILIZATION CURVE
AND ISOLUX DIAGRAM



C Range: 0 - 360DEG
C Interval: 5.0DEG
Test Speed: HIGH
Temperature: 25.3DEG
Operators: DAMIN
Test Date: 06 October 2023

γ Range: 0 - 180DEG
 γ Interval: 1.0DEG
Test System: GO-2000B_V1 SYSTEM V2.00.446
Humidity: 65.0%
Test Distance: 7.850m [K=1.0000]
Remarks:

ZONAL FLUX DIAGRAM

Test:U:244.22V I:1.2149A P:288.75W PF:0.9732 Freq:50.03Hz Lamp Flux:45721.9x1 lm		
NAME: ALDS2-SW3B300-xDS3	TYPE:	WEIGHT:
SPEC.:	DIM.:	SERIAL No.:
MFR.:	SUR.:	Shielding Angle:

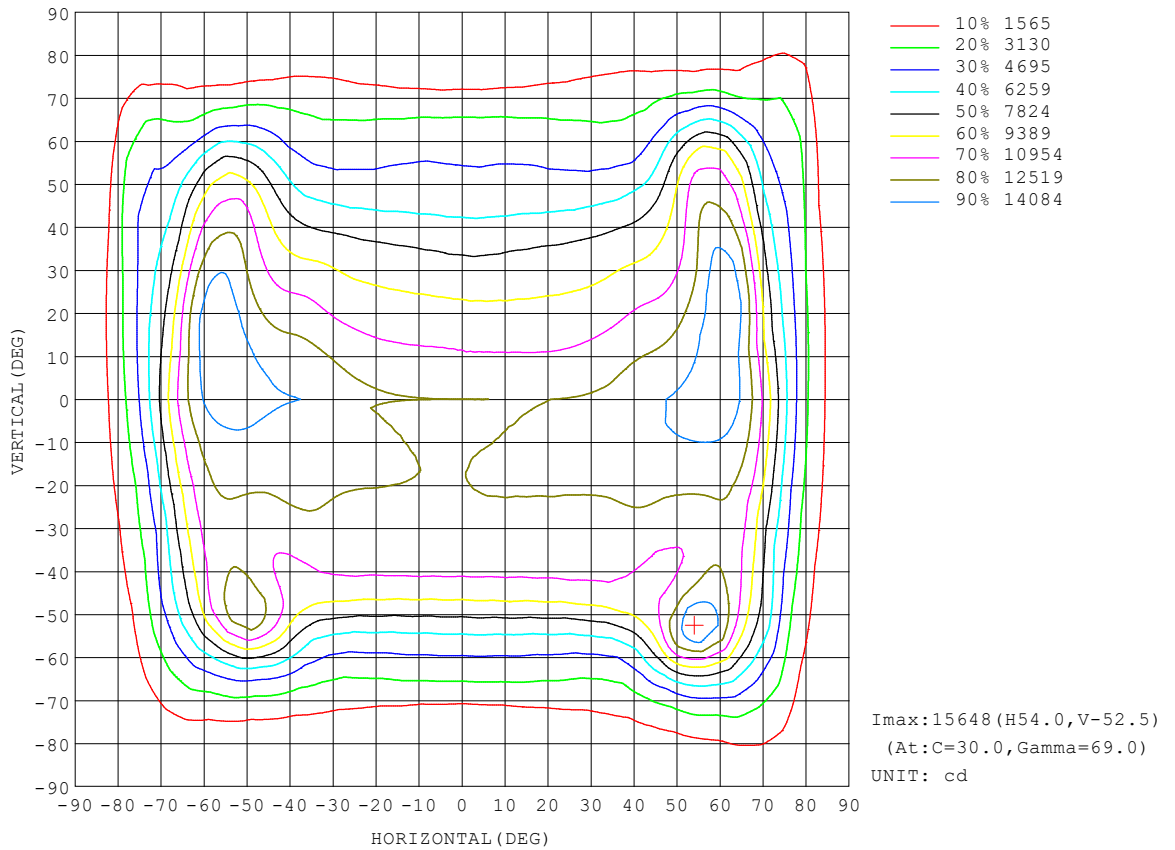
γ	C0	C45	C90	C135	C180	C225	C270	C315	γ	Φ zone	Φ total	%lum,lamp
10	1250	1247	1241	1234	1257	1159	1113	1140	0- 10	1150	1150	2.52,2.52
20	1251	1265	1250	1257	1281	1074	983.1	1050	10- 20	3354	4504	9.85,9.85
30	1284	1254	1223	1245	1354	991.6	840.7	959.3	20- 30	5337	9841	21.5,21.5
40	1357	1203	1118	1197	1415	914.4	665.9	877.7	30- 40	7000	16841	36.8,36.8
50	1434	1127	803.2	1096	1481	760.5	515.3	744.9	40- 50	8004	24845	54.3,54.3
60	1505	893.4	457.3	901.0	1419	569.3	401.1	541.3	50- 60	8063	32908	72,72
70	1082	500.8	176.9	542.0	812.2	407.8	202.7	366.9	60- 70	7385	40292	88.1,88.1
80	336.1	156.3	38.92	120.0	233.9	123.1	66.18	159.0	70- 80	4097	44389	97.1,97.1
90	17.97	2.590	0.9691	2.210	5.137	4.561	1.936	8.592	80- 90	883.4	45273	99,99
100	5.805	3.166	1.774	3.576	7.927	5.220	2.708	4.877	90-100	42.72	45315	99.1,99.1
110	8.271	4.765	2.862	5.145	10.04	6.961	4.457	6.589	100-110	54.65	45370	99.2,99.2
120	9.708	6.263	4.135	6.442	10.95	8.576	6.535	8.332	110-120	67.57	45438	99.4,99.4
130	10.04	7.498	5.443	7.000	10.91	9.292	8.379	9.796	120-130	72.49	45510	99.5,99.5
140	9.747	8.263	6.597	7.393	10.57	9.781	9.632	10.49	130-140	68.09	45578	99.7,99.7
150	9.982	8.954	7.696	8.011	10.78	10.30	10.16	10.80	140-150	58.34	45637	99.8,99.8
160	10.64	9.770	8.760	8.828	11.24	10.63	10.61	11.03	150-160	45.40	45682	99.9,99.9
170	11.51	10.58	9.802	9.889	11.76	10.94	10.82	11.07	160-170	29.52	45711	100,100
180	11.97	11.03	10.61	10.83	12.02	11.01	10.62	10.83	170-180	10.36	45722	100,100
DEG	LUMINOUS INTENSITY:X10cd									UNIT:lm		

C Range: 0 - 360DEG
 C Interval: 5.0DEG
 Test Speed: HIGH
 Temperature:25.3DEG
 Operators:DAMIN
 Test Date:06 October 2023

γ Range: 0 - 180DEG
 γInterval: 1.0DEG
 Test System: GO-2000B_V1 SYSTEM V2.00.446
 Humidity:65.0%
 Test Distance:7.850m [K=1.0000]
 Remarks:

ISOCANDELA DIAGRAM

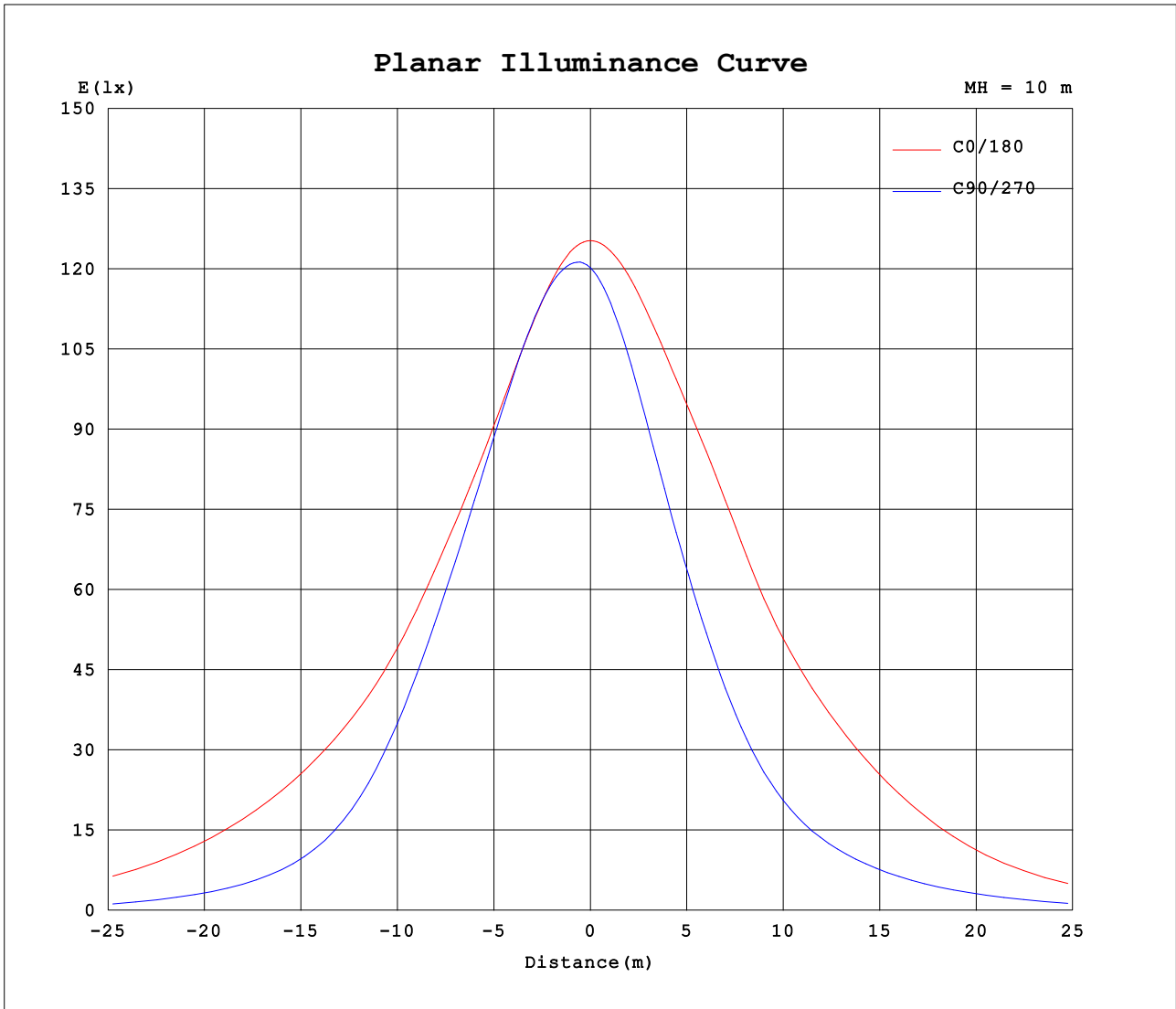
Test:U:244.22V I:1.2149A P:288.75W PF:0.9732 Freq:50.03Hz Lamp Flux:45721.9x1 lm		
NAME: ALDS2-SW3B300-xDS3	TYPE:	WEIGHT:
SPEC.:	DIM.:	SERIAL No.:
MFR.:	SUR.:	Shielding Angle:



C Range: 0 - 360DEG
C Interval: 5.0DEG
Test Speed: HIGH
Temperature:25.3DEG
Operators:DAMIN
Test Date:06 October 2023

γ Range: 0 - 180DEG
γ Interval: 1.0DEG
Test System: GO-2000B_V1 SYSTEM V2.00.446
Humidity:65.0%
Test Distance:7.850m [K=1.0000]
Remarks:

Planar Illuminance Curve



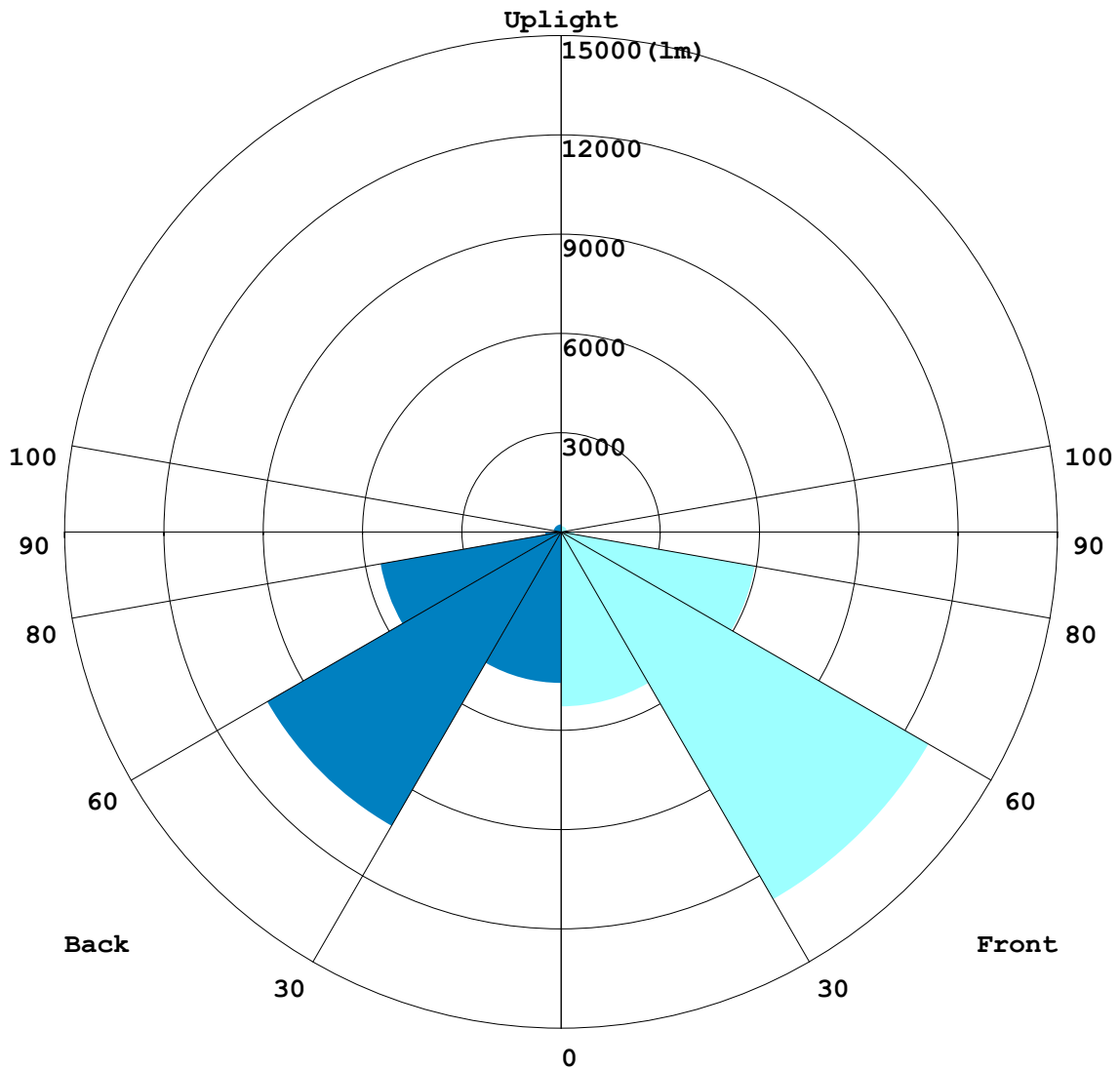
C Range: 0 - 360DEG
C Interval: 5.0DEG
Test Speed: HIGH
Temperature:25.3DEG
Operators:DAMIN
Test Date:06 October 2023

γ Range: 0 - 180DEG
γ Interval: 1.0DEG
Test System: GO-2000B_V1 SYSTEM V2.00.446
Humidity:65.0%
Test Distance:7.850m [K=1.0000]
Remarks:

LCS REPORT

Test:U:244.22V I:1.2149A P:288.75W PF:0.9732 Freq:50.03Hz		
Lamp Flux:45721.9x1 lm		
NAME: ALDS2-SW3B300-xDS3	TYPE:	WEIGHT:
SPEC.:	DIM.:	SERIAL No.:
MFR.:	SUR.:	Shielding Angle:

LUMINAIRE CLASSIFICATION SYSTEM(LCS) GRAPH



C Range: 0 - 360DEG
 C Interval: 5.0DEG
 Test Speed: HIGH
 Temperature:25.3DEG
 Operators:DAMIN
 Test Date:06 October 2023

γ Range: 0 - 180DEG
 γ Interval: 1.0DEG
 Test System: GO-2000B_V1 SYSTEM V2.00.446
 Humidity:65.0%
 Test Distance:7.850m [K=1.0000]
 Remarks:

BUG REPORT

Test:U:244.22V I:1.2149A P:288.75W PF:0.9732 Freq:50.03Hz Lamp Flux:45721.9x1 lm		
NAME: ALDS2-SW3B300-xDS3	TYPE:	WEIGHT:
SPEC.:	DIM.:	SERIAL No.:
MFR.:	SUR.:	Shielding Angle:

IESNA Luminaire Flux Distribution Table:

Zone	Lumens	Luminaire %
FL - Front-Low(0-30)	5275.1	11.5
FM - Front-Medium(30-60)	12816	28.0
FH - Front-High(60-80)	5939.9	13.0
FVH - Front-Very High(80-90)	402.54	0.9
Total Forward Light	24630	53.9

BL - Back-Low(0-30)	4565.7	10.0
BM - Back-Medium(30-60)	10250	22.4
BH - Back-High(60-80)	5541.8	12.1
BVH - Back-Very High(80-90)	480.9	1.1
Total Back Light	21091	46.1

UL - Uplight-Low(90-100)	42.716	0.1
UH - Uplight-High(100-180)	406.43	0.9
Total Up Light	449.14	1.0

BUG(Back,Up,Glare) Rating	B5-U3-G5
---------------------------	----------

Zone	Downward Lumens	Upward Lumens	Total Lumens
House Side	20839	252.74	21091
Street Side	24434	196.4	24630

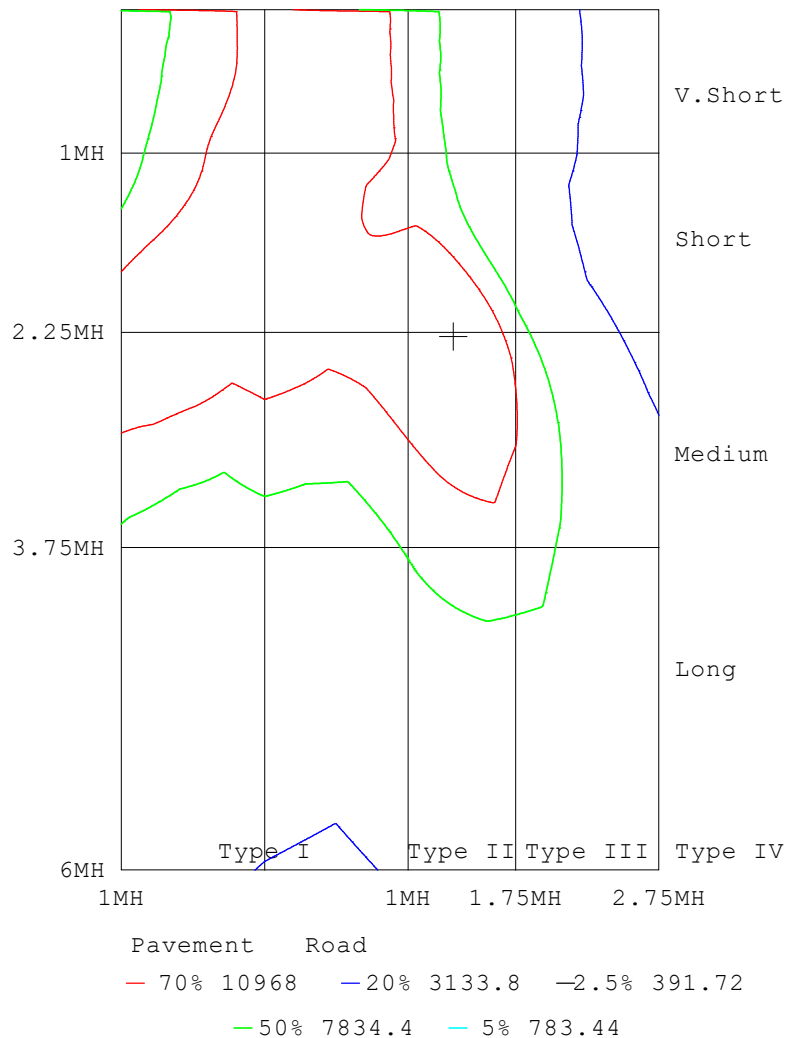
C Range: 0 - 360DEG
C Interval: 5.0DEG
Test Speed: HIGH
Temperature:25.3DEG
Operators:DAMIN
Test Date:06 October 2023

γ Range: 0 - 180DEG
 γ Interval: 1.0DEG
Test System: GO-2000B_V1 SYSTEM V2.00.446
Humidity:65.0%
Test Distance:7.850m [K=1.0000]
Remarks:

ROAD ISOCANDELA REPORT

Test:U:244.22V I:1.2149A P:288.75W PF:0.9732 Freq:50.03Hz		
Lamp Flux:45721.9x1 lm		
NAME: ALDS2-SW3B300-xDS3	TYPE:	WEIGHT:
SPEC.:	DIM.:	SERIAL No.:
MFR.:	SUR.:	Shielding Angle:

ROAD SURFACE ISOCANDELA DIAGRAM



C Range: 0 - 360DEG
 C Interval: 5.0DEG
 Test Speed: HIGH
 Temperature:25.3DEG
 Operators:DAMIN
 Test Date:06 October 2023

γ Range: 0 - 180DEG
 γ Interval: 1.0DEG
 Test System: GO-2000B_V1 SYSTEM V2.00.446
 Humidity:65.0%
 Test Distance:7.850m [K=1.0000]
 Remarks:

Photometric Data Table [cd]

G/C	0.0	5.0	10.0	15.0	20.0	25.0	30.0	35.0	40.0	45.0
0.0	12528	12455	12399	12345	12306	12267	12249	12213	12192	12163
3.0	12526	12470	12426	12391	12367	12341	12333	12313	12301	12283
6.0	12520	12478	12450	12430	12414	12398	12399	12386	12383	12372
9.0	12503	12479	12466	12458	12451	12449	12452	12449	12451	12445
12.0	12483	12479	12480	12486	12492	12493	12509	12509	12514	12511
15.0	12475	12494	12509	12525	12538	12554	12566	12571	12578	12578
18.0	12488	12524	12555	12579	12602	12613	12630	12631	12636	12630
21.0	12523	12579	12616	12649	12667	12676	12680	12677	12668	12653
24.0	12586	12660	12705	12730	12737	12734	12724	12701	12676	12648
27.0	12690	12774	12819	12828	12821	12791	12756	12709	12654	12609
30.0	12842	12923	12958	12941	12898	12830	12761	12682	12599	12536
33.0	13039	13117	13118	13057	12963	12842	12720	12607	12499	12416
36.0	13272	13327	13296	13175	13010	12827	12647	12496	12355	12262
39.0	13501	13561	13497	13312	13071	12800	12551	12358	12193	12087
42.0	13703	13774	13687	13452	13127	12775	12454	12215	12027	11911
45.0	13892	13957	13818	13524	13121	12718	12332	12061	11853	11721
48.0	14130	14111	13841	13426	12921	12501	11841	11431	11030	10748
51.0	14448	14277	13783	13176	12527	12047	11640	11463	11307	11153
54.0	14796	14387	13655	12877	12081	11507	11088	10989	10910	10679
57.0	15038	14372	13460	12560	11676	11063	10707	10655	10561	9993
60.0	15050	14188	13219	12308	11503	10967	10773	10716	10260	8934
63.0	14617	13758	12869	12228	11871	11673	11787	11431	9794	7583
66.0	13430	12807	12105	12050	12424	13031	13950	12715	9152	6300
69.0	11565	11146	10726	11309	12423	14155	15666	13002	8313	5308
72.0	9192	8852	8763	9982	11696	14109	13861	10576	6685	4348
75.0	6694	6440	6698	8368	9968	11295	9650	7188	4667	3210
78.0	4560	4312	4962	6910	7456	7510	5966	4503	3042	2157
81.0	2869	2630	3237	4702	4878	4562	3462	2716	1812	1310
84.0	1700	1497	1867	2836	2842	2525	1801	1376	955.3	657.6
87.0	772.7	638.5	890.1	1374	1425	1163	776.2	572.1	343.6	254.0
90.0	179.7	132.4	156.0	359.5	351.9	309.7	119.9	108.7	82.09	25.90
93.0	40.11	39.03	38.58	37.55	38.53	34.30	31.82	28.11	25.11	21.36
96.0	47.74	46.41	45.48	43.57	42.10	39.66	37.19	33.66	29.99	25.78
99.0	55.46	53.77	52.39	49.95	48.08	45.18	42.20	38.18	34.47	30.21
102.0	63.30	61.28	59.45	56.56	54.20	50.92	47.73	43.52	39.37	34.77
105.0	71.08	68.78	66.53	63.16	60.38	56.68	53.15	48.59	44.37	39.55
108.0	78.40	75.85	73.15	69.41	65.99	61.96	58.16	53.54	49.31	44.40
111.0	84.68	81.91	78.74	74.70	71.07	66.87	63.03	58.43	54.22	49.28
114.0	89.91	86.92	83.45	79.39	75.79	71.72	67.94	63.30	58.96	53.94
117.0	93.97	90.90	87.35	83.56	80.18	76.34	72.59	67.91	63.41	58.38
120.0	97.08	93.99	90.62	87.22	84.11	80.53	76.74	72.04	67.52	62.63
123.0	99.25	96.32	93.19	90.25	87.31	83.87	80.14	75.65	71.34	66.62
126.0	100.4	97.74	94.96	92.39	89.61	86.44	82.99	78.90	74.92	70.46
129.0	100.5	98.17	95.72	93.64	91.22	88.43	85.36	81.86	78.27	73.96
132.0	99.92	97.98	96.05	94.48	92.48	90.13	87.54	84.51	81.06	76.85
135.0	99.02	97.63	96.22	95.23	93.64	91.75	89.52	86.69	83.26	79.19
138.0	97.98	97.27	96.46	96.02	94.84	93.21	91.10	88.24	84.91	81.24
141.0	97.32	97.29	97.10	96.94	95.94	94.45	92.21	89.51	86.62	83.34
144.0	97.36	97.86	97.96	97.84	96.88	95.47	93.50	91.05	88.36	85.37
147.0	98.21	98.87	99.13	98.97	98.06	96.73	94.78	92.51	90.12	87.45
150.0	99.82	100.4	100.5	100.2	99.09	97.86	96.09	94.10	91.90	89.54
153.0	101.4	101.9	101.8	101.3	100.3	99.14	97.71	95.83	93.88	91.87
156.0	103.0	103.5	103.1	102.7	101.7	100.8	99.39	97.78	96.05	94.20
159.0	105.3	105.7	105.3	104.8	104.0	102.9	101.6	99.88	98.29	96.75
162.0	108.4	108.6	108.1	107.5	106.5	105.5	104.1	102.6	101.0	99.60
165.0	110.7	110.9	110.3	109.6	108.7	107.7	106.4	105.0	103.5	102.2
168.0	113.3	113.4	112.5	111.9	110.9	109.8	108.5	107.3	105.7	104.4
171.0	116.0	115.8	114.9	114.2	112.8	111.6	110.1	108.9	107.6	106.4
174.0	118.5	118.1	116.6	115.5	113.8	112.6	111.2	110.3	109.2	107.9
177.0	119.1	118.7	117.0	115.8	114.3	113.4	112.2	111.3	110.3	109.1
180.0	119.7	119.2	117.2	116.3	115.1	114.3	113.1	112.3	111.2	110.3
G/C	50.0	55.0	60.0	65.0	70.0	75.0	80.0	85.0	90.0	95.0
0.0	12151	12128	12118	12100	12089	12070	12059	12030	12022	11985
3.0	12275	12261	12255	12243	12239	12220	12209	12186	12178	12142
6.0	12370	12359	12356	12348	12345	12330	12321	12297	12288	12252
9.0	12447	12437	12438	12434	12431	12420	12408	12389	12379	12343
12.0	12515	12510	12509	12507	12504	12492	12484	12462	12449	12416
15.0	12577	12574	12570	12567	12558	12546	12533	12510	12495	12468
18.0	12622	12615	12605	12594	12580	12568	12545	12527	12508	12478
21.0	12636	12620	12598	12585	12565	12551	12530	12509	12487	12459
24.0	12611	12587	12555	12540	12515	12503	12477	12461	12439	12413
27.0	12554	12520	12479	12464	12434	12422	12394	12382	12355	12335
30.0	12465	12425	12372	12353	12311	12303	12265	12257	12232	12215

C Range: 0 - 360DEG
 C Interval: 5.0DEG
 Test Speed: HIGH
 Temperature:25.3DEG
 Operators:DAMIN
 Test Date:06 October 2023

γ Range: 0 - 180DEG
 γ Interval: 1.0DEG
 Test System: GO-2000B_V1 SYSTEM V2.00.446
 Humidity:65.0%
 Test Distance:7.850m [K=1.0000]
 Remarks:

Photometric Data Table [cd]

33.0	12334	12285	12226	12195	12143	12116	12076	12067	12041	12029
36.0	12168	12114	12037	11995	11909	11875	11807	11801	11768	11774
39.0	11984	11906	11800	11719	11595	11525	11421	11399	11359	11388
42.0	11788	11678	11507	11360	11160	11042	10876	10833	10764	10811
45.0	11553	11372	11071	10831	10506	10343	10083	10027	9900	9984
48.0	11225	10912	10409	10050	9599	9387	9064	8997	8833	8921
51.0	10709	10155	9437	8962	8428	8183	7862	7793	7639	7723
54.0	9904	9089	8174	7668	7127	6927	6631	6601	6455	6536
57.0	8747	7725	6810	6372	5936	5787	5567	5547	5444	5507
60.0	7303	6310	5572	5251	4959	4843	4680	4652	4573	4615
63.0	5885	5077	4515	4320	4090	4029	3869	3865	3781	3830
66.0	4704	4019	3611	3494	3326	3277	3127	3073	2994	3036
69.0	3727	3159	2821	2722	2539	2441	2210	2182	2080	2147
72.0	2920	2402	2077	1939	1729	1590	1401	1351	1301	1332
75.0	2140	1762	1467	1303	1126	1017	915.1	910.4	870.3	894.0
78.0	1486	1219	979.1	844.2	710.3	668.7	607.8	597.9	563.3	583.5
81.0	896.1	745.6	589.5	508.3	417.3	390.9	341.5	342.8	310.7	325.9
84.0	440.0	374.7	276.6	246.9	183.3	161.6	143.6	115.0	100.2	98.77
87.0	147.2	99.96	97.02	70.85	54.33	43.35	29.49	23.14	17.40	20.88
90.0	16.95	14.90	12.58	11.35	10.81	10.17	9.827	9.567	9.691	9.805
93.0	18.57	15.98	14.45	13.12	12.50	11.86	11.72	11.47	11.73	11.82
96.0	22.56	19.52	17.53	15.85	15.08	14.30	14.16	13.84	14.11	14.15
99.0	26.69	23.36	21.01	18.93	17.99	17.08	16.86	16.50	16.79	16.78
102.0	31.10	27.40	24.73	22.37	21.25	20.12	19.87	19.44	19.76	19.71
105.0	35.65	31.66	28.75	26.07	24.69	23.44	23.07	22.63	22.93	22.89
108.0	40.33	36.10	32.92	29.95	28.31	26.91	26.44	26.03	26.28	26.29
111.0	45.06	40.57	37.14	33.95	32.11	30.52	30.06	29.55	29.82	29.80
114.0	49.59	44.98	41.42	38.04	36.04	34.33	33.86	33.27	33.49	33.48
117.0	53.98	49.36	45.76	42.28	40.05	38.37	37.89	37.16	37.34	37.32
120.0	58.21	53.67	50.05	46.46	44.25	42.56	42.02	41.19	41.35	41.31
123.0	62.34	57.85	54.17	50.57	48.52	46.87	46.23	45.33	45.45	45.35
126.0	66.25	61.77	57.99	54.64	52.68	51.14	50.31	49.46	49.51	49.37
129.0	69.70	65.17	61.50	58.43	56.55	55.05	54.09	53.26	53.22	53.07
132.0	72.53	68.21	64.86	61.94	60.21	58.64	57.65	56.87	56.79	56.62
135.0	75.10	71.17	68.05	65.40	63.84	62.12	61.19	60.36	60.32	60.09
138.0	77.59	73.93	71.21	68.80	67.18	65.48	64.56	63.72	63.71	63.49
141.0	80.02	76.81	74.47	72.26	70.54	68.92	68.06	67.18	67.12	66.84
144.0	82.48	79.74	77.64	75.48	73.95	72.41	71.55	70.64	70.53	70.19
147.0	84.90	82.58	80.66	78.67	77.28	75.80	74.89	74.04	73.81	73.39
150.0	87.45	85.40	83.60	81.83	80.57	79.18	78.21	77.32	76.96	76.42
153.0	90.03	88.13	86.53	84.97	83.80	82.44	81.41	80.47	79.99	79.34
156.0	92.51	90.81	89.40	88.01	86.88	85.53	84.44	83.53	82.98	82.27
159.0	95.35	93.83	92.55	91.30	90.23	88.87	87.83	86.94	86.36	85.62
162.0	98.47	97.07	95.93	94.75	93.67	92.33	91.31	90.49	89.97	89.25
165.0	101.1	99.83	98.74	97.61	96.48	95.20	94.37	93.69	93.30	92.63
168.0	103.3	102.2	101.2	100.1	98.92	97.79	97.09	96.57	96.23	95.63
171.0	105.3	104.3	103.3	102.3	101.2	100.2	99.58	99.19	98.94	98.53
174.0	106.7	106.0	105.1	104.2	103.3	102.5	102.0	101.7	101.6	101.3
177.0	108.0	107.4	106.6	105.9	105.1	104.5	104.0	103.9	103.8	103.7
180.0	109.3	108.8	108.2	107.7	107.0	106.7	106.2	106.2	106.1	106.2
G/C	100.0	105.0	110.0	115.0	120.0	125.0	130.0	135.0	140.0	145.0
0.0	11996	11985	12001	11995	12009	12004	12015	12012	12023	12023
3.0	12146	12137	12147	12142	12144	12138	12136	12129	12127	12122
6.0	12256	12249	12254	12247	12247	12238	12234	12221	12218	12202
9.0	12345	12339	12343	12338	12334	12326	12321	12307	12301	12289
12.0	12419	12415	12418	12413	12414	12405	12403	12390	12390	12374
15.0	12466	12470	12472	12475	12476	12473	12473	12473	12473	12470
18.0	12478	12484	12489	12502	12510	12519	12533	12540	12558	12559
21.0	12459	12469	12478	12492	12510	12530	12557	12585	12619	12643
24.0	12409	12421	12427	12451	12467	12502	12542	12592	12641	12695
27.0	12330	12334	12341	12363	12381	12425	12473	12543	12614	12705
30.0	12208	12219	12222	12241	12253	12307	12353	12445	12535	12657
33.0	12032	12049	12058	12080	12100	12151	12210	12304	12416	12578
36.0	11775	11822	11837	11882	11913	11983	12044	12156	12292	12500
39.0	11403	11485	11537	11626	11691	11791	11877	12011	12185	12439
42.0	10849	10997	11100	11272	11400	11569	11696	11866	12074	12358
45.0	10023	10255	10414	10718	10943	11242	11438	11658	11845	12110
48.0	8941	9241	9442	9893	10237	10730	11033	11301	11416	11620
51.0	7726	8014	8249	8763	9230	9921	10438	10799	10902	11070
54.0	6516	6773	6951	7468	7954	8815	9590	10293	10564	10761
57.0	5490	5676	5799	6198	6624	7484	8462	9737	10588	10981
60.0	4618	4753	4842	5121	5449	6178	7227	9010	10961	11942
63.0	3817	3935	3976	4200	4444	5097	6131	8222	11090	13223
66.0	3047	3170	3194	3369	3566	4176	5230	7263	10143	13176

C Range: 0 - 360DEG

C Interval: 5.0DEG

Test Speed: HIGH

Temperature:25.3DEG

Operators:DAMIN

Test Date:06 October 2023

γ Range: 0 - 180DEG

γ Interval: 1.0DEG

Test System: GO-2000B_V1 SYSTEM V2.00.446

Humidity:65.0%

Test Distance:7.850m [K=1.0000]

Remarks:

Photometric Data Table [cd]

69.0	2162	2330	2400	2588	2789	3330	4221	5931	8073	10834
72.0	1362	1532	1638	1856	2066	2514	3141	4329	5694	7617
75.0	904.3	990.0	1092	1262	1447	1789	2189	2953	3720	4908
78.0	581.7	632.2	673.0	805.6	920.0	1138	1351	1814	2280	3017
81.0	314.0	353.0	375.5	448.9	492.4	610.9	714.7	957.3	1246	1633
84.0	105.8	121.5	131.2	167.3	175.9	243.6	268.3	412.3	514.0	736.9
87.0	24.00	31.30	30.11	34.66	30.85	34.93	32.73	65.93	144.2	208.5
90.0	10.11	10.55	11.42	12.30	13.85	16.07	19.00	22.10	25.90	29.04
93.0	12.11	12.56	13.48	14.63	16.61	19.21	22.44	25.83	29.96	33.57
96.0	14.51	14.90	16.00	17.27	19.62	22.61	26.02	29.72	34.28	38.19
99.0	17.18	17.61	18.90	20.43	23.10	26.42	30.20	34.23	39.16	43.38
102.0	20.18	20.64	22.13	23.90	26.89	30.48	34.62	38.88	44.03	48.34
105.0	23.40	23.97	25.54	27.55	30.83	34.64	39.13	43.54	48.74	53.06
108.0	26.76	27.41	29.19	31.36	34.86	38.99	43.68	48.29	53.43	57.62
111.0	30.36	31.06	32.98	35.28	38.95	43.18	48.25	52.98	57.97	62.22
114.0	34.10	34.79	36.81	39.05	42.94	47.32	52.40	56.96	62.04	66.48
117.0	38.03	38.69	40.65	43.07	46.90	51.36	56.37	60.96	65.80	70.23
120.0	42.03	42.68	44.54	47.00	50.64	54.72	59.90	64.42	68.97	73.36
123.0	46.04	46.70	48.36	50.51	54.06	57.81	62.46	67.13	71.23	75.40
126.0	49.92	50.62	52.09	53.94	56.97	60.48	64.54	68.65	72.88	76.72
129.0	53.54	54.22	55.63	57.19	59.73	62.80	66.16	69.72	73.48	77.18
132.0	57.05	57.62	59.10	60.33	62.41	64.82	67.70	70.54	73.76	77.02
135.0	60.47	60.97	62.42	63.45	65.11	67.00	69.26	71.49	74.16	77.12
138.0	63.80	64.18	65.47	66.47	67.73	69.21	70.99	72.88	74.97	77.40
141.0	67.05	67.28	68.36	69.28	70.29	71.49	72.94	74.51	76.48	78.35
144.0	70.24	70.31	71.11	71.82	72.89	73.79	75.04	76.33	78.08	79.99
147.0	73.28	73.19	73.70	74.17	75.03	75.99	77.12	78.25	79.71	81.43
150.0	76.16	75.91	76.17	76.48	77.25	78.06	79.23	80.11	81.46	82.83
153.0	79.03	78.69	78.89	79.04	79.77	80.37	81.47	82.35	83.56	84.59
156.0	81.96	81.56	81.72	81.76	82.40	82.88	83.78	84.47	85.73	86.71
159.0	85.34	84.94	85.13	85.10	85.62	85.91	86.66	87.20	88.30	89.19
162.0	89.04	88.66	88.83	88.73	89.12	89.38	89.98	90.44	91.44	92.24
165.0	92.38	91.98	92.12	91.98	92.32	92.48	93.05	93.42	94.38	95.13
168.0	95.39	95.01	95.18	95.10	95.43	95.65	96.23	96.68	97.54	98.21
171.0	98.33	98.03	98.26	98.18	98.49	98.76	99.45	99.95	100.7	101.5
174.0	101.1	100.9	101.1	101.1	101.4	101.8	102.4	102.9	103.7	104.4
177.0	103.5	103.5	103.8	103.9	104.2	104.5	105.1	105.6	106.3	107.0
180.0	106.1	106.3	106.5	106.7	106.8	107.3	107.7	108.3	108.8	109.5
G/C	150.0	155.0	160.0	165.0	170.0	175.0	180.0	185.0	190.0	195.0
0.0	12038	12036	12047	12050	12060	12062	12528	12455	12399	12345
3.0	12118	12106	12105	12094	12088	12076	12529	12441	12369	12298
6.0	12197	12178	12167	12143	12126	12095	12535	12433	12340	12249
9.0	12277	12255	12238	12203	12176	12131	12561	12436	12320	12206
12.0	12367	12340	12319	12276	12239	12175	12592	12442	12304	12161
15.0	12467	12442	12417	12371	12322	12245	12643	12471	12299	12123
18.0	12567	12551	12538	12488	12439	12344	12726	12532	12325	12112
21.0	12670	12672	12676	12641	12595	12495	12858	12634	12387	12128
24.0	12753	12786	12826	12817	12794	12691	13037	12785	12497	12190
27.0	12790	12880	12966	13009	13019	12942	13267	13003	12667	12307
30.0	12793	12936	13081	13182	13249	13199	13542	13272	12903	12476
33.0	12767	12979	13188	13352	13465	13458	13811	13547	13157	12679
36.0	12750	13026	13307	13519	13658	13653	14018	13731	13340	12840
39.0	12751	13086	13401	13641	13774	13773	14123	13810	13404	12898
42.0	12682	13038	13353	13622	13798	13840	14211	13879	13408	12839
45.0	12366	12731	13067	13450	13753	13941	14382	14070	13505	12799
48.0	11833	12247	12682	13222	13707	14071	14638	14407	13805	12966
51.0	11320	11795	12354	13005	13620	14153	14881	14793	14244	13389
54.0	11072	11552	12151	12815	13457	14097	14994	15105	14756	13983
57.0	11345	11674	12130	12631	13158	13792	14832	15163	15133	14582
60.0	12192	12187	12228	12329	12594	13126	14191	14630	15053	14747
63.0	13241	12524	11950	11638	11550	11982	12896	13201	13908	13863
66.0	13551	12278	11079	10379	9972	10283	11066	10949	11623	11965
69.0	12012	11357	9712	8652	7939	8127	8883	8688	8925	9364
72.0	8739	9037	8020	6830	5785	5915	6703	6931	6964	7134
75.0	5727	6412	6255	5435	4119	3970	4759	5458	5887	5769
78.0	3517	4303	4312	3781	2772	2565	3203	3988	5015	4947
81.0	1990	2599	2729	2376	1653	1558	1979	2738	4204	4156
84.0	961.9	1283	1385	1186	752.7	660.5	965.8	1533	2738	2445
87.0	194.8	356.5	350.9	292.8	155.4	142.5	255.7	323.6	996.9	1076
90.0	32.67	35.74	39.32	40.46	42.38	42.97	51.37	54.10	55.11	58.76
93.0	37.43	40.54	43.09	44.42	45.52	45.82	59.85	60.61	59.48	58.51
96.0	42.48	45.47	48.80	50.50	52.10	52.28	68.34	68.92	67.45	65.71
99.0	47.93	51.20	54.90	56.92	59.06	59.67	76.60	77.28	75.45	73.30
102.0	53.00	56.60	60.69	63.27	65.85	66.91	84.51	85.15	83.06	80.48

C Range: 0 - 360DEG

C Interval: 5.0DEG

Test Speed: HIGH

Temperature:25.3DEG

Operators:DAMIN

Test Date:06 October 2023

γ Range: 0 - 180DEG

γ Interval: 1.0DEG

Test System: GO-2000B_V1 SYSTEM V2.00.446

Humidity:65.0%

Test Distance:7.850m [K=1.0000]

Remarks:

Photometric Data Table [cd]

105.0	57.82	61.39	65.83	68.92	72.05	73.58	91.54	91.85	89.86	86.94
108.0	62.29	65.98	70.41	73.70	77.26	79.22	97.27	97.70	95.67	92.55
111.0	66.79	70.47	74.75	77.91	81.54	83.91	101.8	102.6	100.8	97.66
114.0	71.10	74.66	78.72	81.81	85.25	87.75	105.2	106.3	104.9	102.1
117.0	74.81	78.38	82.30	85.50	88.72	91.05	107.7	108.9	108.2	105.8
120.0	77.84	81.57	85.27	88.60	91.73	93.83	109.5	110.8	110.5	108.5
123.0	79.67	83.74	87.49	90.76	93.72	95.55	110.3	111.6	111.8	110.1
126.0	80.73	84.94	88.63	91.98	94.54	96.19	110.3	111.5	112.1	110.9
129.0	81.09	85.10	88.72	91.92	94.31	95.78	109.4	110.5	111.6	110.9
132.0	80.84	84.86	88.16	91.25	93.46	95.00	108.2	108.9	110.2	110.0
135.0	80.38	84.15	87.31	90.87	92.26	93.96	107.0	107.1	108.2	108.3
138.0	80.47	83.61	86.51	89.91	90.88	92.77	106.0	105.6	106.2	106.1
141.0	80.80	83.61	86.19	89.21	90.29	91.87	105.7	104.9	104.8	104.4
144.0	82.01	84.20	86.36	88.14	90.10	91.19	105.8	104.6	104.1	103.4
147.0	83.60	84.97	87.11	88.73	90.01	91.22	106.6	105.1	104.3	103.6
150.0	84.72	86.53	87.73	89.54	91.01	92.04	107.8	106.2	105.5	104.7
153.0	86.17	87.60	89.17	90.68	92.15	93.35	109.0	107.5	106.7	106.0
156.0	88.04	89.16	90.67	91.92	93.70	95.20	110.4	109.0	108.2	107.5
159.0	90.53	91.73	93.16	94.16	95.85	97.48	111.9	110.4	109.6	108.9
162.0	93.57	94.68	96.03	96.96	98.51	100.2	113.4	111.8	111.0	110.1
165.0	96.41	97.34	98.52	99.37	100.8	102.5	114.8	113.1	112.2	111.3
168.0	99.39	100.1	101.1	101.9	103.3	105.0	116.4	114.6	113.7	112.7
171.0	102.6	103.4	104.1	104.8	106.3	107.9	118.3	116.4	115.2	114.0
174.0	105.6	106.6	107.2	108.7	110.9	112.7	120.2	118.2	116.8	115.3
177.0	108.0	108.9	109.3	110.8	112.9	115.4	120.3	118.7	117.5	115.9
180.0	110.3	111.1	111.5	112.8	114.7	117.1	120.2	118.7	117.6	115.9
G/C	200.0	205.0	210.0	215.0	220.0	225.0	230.0	235.0	240.0	245.0
0.0	12306	12267	12249	12213	12192	12163	12151	12128	12118	12100
3.0	12243	12182	12149	12101	12065	12025	11993	11960	11939	11909
6.0	12179	12100	12045	11972	11922	11857	11817	11757	11726	11681
9.0	12108	12008	11926	11828	11750	11661	11601	11521	11472	11405
12.0	12031	11896	11787	11656	11554	11433	11347	11239	11177	11094
15.0	11958	11783	11642	11473	11337	11181	11068	10939	10857	10750
18.0	11905	11691	11497	11287	11111	10926	10779	10623	10510	10395
21.0	11870	11605	11360	11102	10885	10658	10482	10299	10182	10036
24.0	11869	11538	11229	10924	10660	10398	10194	9988	9839	9692
27.0	11908	11506	11130	10763	10450	10151	9917	9695	9536	9363
30.0	11992	11501	11040	10609	10248	9916	9662	9422	9240	9048
33.0	12107	11515	10958	10455	10044	9679	9407	9140	8927	8690
36.0	12225	11556	10911	10330	9864	9455	9134	8817	8559	8259
39.0	12300	11599	10895	10249	9709	9226	8822	8415	8087	7732
42.0	12221	11522	10822	10129	9529	8953	8445	7935	7536	7146
45.0	12048	11274	10574	9850	9232	8561	7964	7353	6947	6551
48.0	12002	11076	10254	9460	8760	8020	7357	6727	6320	5972
51.0	12233	11115	10101	9144	8269	7392	6712	6100	5743	5452
54.0	12760	11466	10182	8979	7831	6790	6073	5504	5214	4996
57.0	13452	12050	10516	8982	7454	6217	5477	4977	4732	4560
60.0	13894	12593	10948	9108	7177	5693	4938	4475	4279	4123
63.0	13318	12361	11138	9115	6916	5266	4443	4014	3841	3691
66.0	12003	11466	10623	8675	6465	4824	4009	3575	3412	3266
69.0	10111	10167	9463	7537	5675	4293	3576	3148	2969	2802
72.0	7901	8176	7578	5911	4651	3615	3057	2682	2474	2157
75.0	5908	5693	5245	4158	3460	2808	2447	2094	1827	1538
78.0	4293	3574	3194	2502	2177	1818	1689	1470	1314	1064
81.0	3045	2050	1638	1270	1098	979.9	939.9	870.9	815.4	716.7
84.0	1612	988.0	782.3	595.1	508.4	419.3	439.2	421.3	434.4	409.5
87.0	524.8	205.7	240.2	159.2	147.3	147.8	127.1	152.3	124.5	153.5
90.0	55.75	54.28	53.11	50.89	49.00	45.61	43.04	38.54	36.65	30.11
93.0	56.08	53.69	50.58	47.70	44.07	40.42	35.96	31.68	27.17	23.93
96.0	62.36	59.35	55.56	52.41	48.54	44.92	40.32	36.11	31.38	27.88
99.0	69.37	65.74	61.44	58.02	53.99	50.34	45.72	41.48	36.65	32.93
102.0	76.07	71.89	67.19	63.44	59.46	55.93	51.43	47.27	42.39	38.53
105.0	82.19	77.37	72.23	68.24	64.32	61.16	57.04	53.08	48.28	44.41
108.0	87.57	82.47	77.03	72.81	68.91	66.18	62.57	58.90	54.27	50.40
111.0	92.68	87.57	82.16	77.96	74.02	71.37	68.09	64.70	60.19	56.44
114.0	97.50	92.75	87.62	83.63	79.55	76.58	73.27	70.18	65.99	62.35
117.0	101.9	97.51	92.78	88.90	84.75	81.46	77.97	75.13	71.40	67.99
120.0	105.1	101.1	96.76	92.99	89.06	85.76	82.46	79.69	76.19	73.15
123.0	107.2	103.4	99.34	95.67	92.23	89.36	86.30	83.50	80.35	77.75
126.0	108.4	104.8	100.9	97.29	94.24	91.54	88.87	86.42	83.83	82.06
129.0	109.1	105.8	101.9	98.21	95.22	92.64	90.38	88.50	86.91	85.93
132.0	108.8	105.9	102.4	98.79	95.90	93.57	91.69	90.46	89.68	89.41
135.0	107.7	105.5	102.6	99.48	96.83	94.75	93.30	92.68	92.31	92.53
138.0	106.0	104.7	102.9	100.4	98.11	96.45	95.38	94.90	94.80	95.22

C Range: 0 - 360DEG

C Interval: 5.0DEG

Test Speed: HIGH

Temperature:25.3DEG

Operators:DAMIN

Test Date:06 October 2023

γ Range: 0 - 180DEG

γ Interval: 1.0DEG

Test System: GO-2000B_V1 SYSTEM V2.00.446

Humidity:65.0%

Test Distance:7.850m [K=1.0000]

Remarks:

Photometric Data Table [cd]

141.0	104.4	103.6	102.7	101.3	99.78	98.47	97.44	97.02	97.01	97.41
144.0	103.3	102.9	102.6	102.0	101.1	100.1	99.36	99.00	98.91	98.78
147.0	103.4	103.1	102.9	102.5	102.1	101.6	101.1	100.8	100.3	99.97
150.0	104.4	104.0	103.8	103.5	103.3	103.0	102.8	102.3	101.6	101.3
153.0	105.7	105.2	105.0	104.7	104.5	104.4	104.0	103.4	102.9	102.6
156.0	107.1	106.6	106.4	106.0	105.7	105.3	105.0	104.6	104.2	104.0
159.0	108.6	107.9	107.5	106.8	106.5	106.0	105.8	105.5	105.3	105.2
162.0	109.6	108.9	108.3	107.6	107.2	106.8	106.6	106.1	105.9	106.1
165.0	110.8	110.0	109.3	108.6	108.2	107.7	107.5	106.9	107.0	107.0
168.0	112.0	111.1	110.4	109.7	109.3	108.8	108.3	107.8	107.9	107.7
171.0	113.3	112.3	111.6	110.7	110.2	109.6	109.1	108.5	108.5	108.1
174.0	114.5	113.3	112.5	111.5	110.8	110.1	109.3	108.7	108.5	108.1
177.0	115.1	113.9	113.1	112.0	111.2	110.3	109.5	108.9	108.6	108.0
180.0	115.3	114.1	113.3	112.1	111.4	110.1	109.4	108.7	108.3	107.6
G/C	250.0	255.0	260.0	265.0	270.0	275.0	280.0	285.0	290.0	295.0
0.0	12089	12070	12059	12030	12022	11985	11996	11985	12001	11995
3.0	11895	11867	11850	11818	11809	11777	11787	11781	11802	11809
6.0	11657	11615	11600	11556	11551	11513	11534	11527	11555	11564
9.0	11377	11319	11294	11245	11241	11198	11222	11224	11265	11285
12.0	11051	10973	10949	10890	10890	10842	10872	10871	10929	10957
15.0	10695	10609	10578	10507	10506	10452	10498	10500	10561	10603
18.0	10322	10225	10180	10111	10097	10057	10094	10107	10176	10233
21.0	9953	9837	9794	9708	9701	9649	9695	9712	9799	9861
24.0	9585	9464	9391	9305	9280	9235	9286	9322	9421	9503
27.0	9245	9092	9004	8890	8862	8810	8877	8925	9054	9164
30.0	8897	8712	8591	8453	8407	8363	8437	8524	8688	8834
33.0	8499	8272	8130	7960	7913	7865	7972	8084	8292	8478
36.0	8031	7768	7610	7430	7383	7344	7472	7602	7851	8069
39.0	7483	7207	7053	6875	6839	6802	6934	7069	7335	7572
42.0	6896	6639	6498	6343	6306	6276	6401	6541	6783	7022
45.0	6330	6097	5994	5854	5831	5792	5903	6010	6242	6449
48.0	5788	5615	5530	5426	5395	5368	5450	5538	5718	5900
51.0	5333	5219	5176	5073	5038	5006	5090	5154	5276	5396
54.0	4949	4904	4889	4785	4726	4702	4798	4852	4921	4972
57.0	4558	4537	4543	4447	4398	4375	4484	4537	4588	4581
60.0	4114	4064	4090	4012	4011	3980	4079	4101	4173	4163
63.0	3661	3598	3608	3558	3578	3553	3621	3633	3705	3715
66.0	3218	3121	3113	3040	3026	3053	3138	3150	3244	3275
69.0	2687	2460	2379	2237	2270	2261	2441	2545	2755	2834
72.0	1966	1743	1663	1552	1579	1573	1706	1805	2070	2273
75.0	1370	1199	1127	1072	1085	1075	1135	1247	1429	1601
78.0	954.4	864.6	839.0	804.0	817.9	807.7	840.8	865.5	958.1	1120
81.0	668.4	611.0	597.4	568.8	587.0	578.1	607.5	621.6	681.2	747.5
84.0	414.1	379.9	375.8	352.5	369.9	364.8	397.1	407.4	451.8	475.6
87.0	119.6	149.7	112.7	142.5	113.1	158.4	155.0	163.5	193.2	212.5
90.0	26.17	22.39	20.87	18.21	19.36	20.65	27.63	29.14	33.49	36.04
93.0	21.45	20.18	19.13	18.99	18.61	18.84	19.56	21.90	23.90	23.81
96.0	24.96	23.64	22.52	22.25	21.88	22.08	23.19	23.19	24.94	27.87
99.0	29.58	27.92	26.49	26.16	25.68	25.97	26.04	27.31	28.47	31.42
102.0	34.81	32.82	31.15	30.74	30.12	30.52	30.63	32.11	33.53	36.54
105.0	40.48	38.28	36.37	35.81	35.21	35.58	35.80	37.33	39.07	42.39
108.0	46.43	44.07	41.97	41.38	40.70	41.11	41.32	43.28	44.98	48.47
111.0	52.45	50.10	47.89	47.32	46.56	47.05	47.27	49.23	51.07	54.61
114.0	58.45	56.19	54.06	53.52	52.73	53.24	53.42	55.27	57.21	60.75
117.0	64.34	62.27	60.33	59.84	59.07	59.58	59.78	61.60	63.28	66.58
120.0	69.97	68.21	66.51	66.05	65.35	65.82	66.02	67.71	69.14	72.12
123.0	75.23	73.91	72.40	71.99	71.38	71.81	72.01	73.47	74.67	77.22
126.0	80.13	79.28	77.87	77.57	77.04	77.40	77.60	79.12	79.92	82.14
129.0	84.76	84.18	82.89	82.69	82.19	82.56	82.68	84.20	84.83	86.59
132.0	88.91	88.41	87.39	87.26	86.83	87.11	87.26	88.53	89.39	90.64
135.0	92.51	92.07	91.36	91.30	91.01	91.20	91.37	92.59	93.43	94.47
138.0	95.19	94.95	94.56	94.64	94.42	94.58	94.74	95.84	96.70	97.96
141.0	97.17	97.09	97.01	97.19	97.18	97.27	97.51	98.41	99.31	100.7
144.0	98.59	98.63	98.74	99.05	99.16	99.33	99.60	100.5	101.3	102.5
147.0	99.76	99.76	99.97	100.3	100.6	100.8	101.1	102.0	102.7	103.8
150.0	101.0	101.0	101.1	101.3	101.6	101.9	102.2	103.1	103.8	104.7
153.0	102.4	102.4	102.5	102.7	102.9	103.1	103.4	104.1	104.7	105.6
156.0	104.0	104.1	104.1	104.3	104.4	104.6	104.8	105.5	105.9	106.5
159.0	105.3	105.4	105.4	105.5	105.8	105.9	106.1	106.6	107.0	107.5
162.0	106.3	106.4	106.5	106.5	106.7	106.8	106.9	107.3	107.7	108.2
165.0	107.0	107.1	107.2	107.3	107.5	107.6	107.7	108.1	108.3	108.6
168.0	107.7	107.7	107.8	107.9	108.2	108.2	108.3	108.6	108.8	109.0
171.0	108.1	107.9	107.9	108.0	108.2	108.3	108.4	108.7	108.7	109.0
174.0	107.8	107.5	107.5	107.5	107.8	107.9	108.0	108.2	108.3	108.5

C Range: 0 - 360DEG

C Interval: 5.0DEG

Test Speed: HIGH

Temperature:25.3DEG

Operators:DAMIN

Test Date:06 October 2023

γ Range: 0 - 180DEG

γ Interval: 1.0DEG

Test System: GO-2000B_V1 SYSTEM V2.00.446

Humidity:65.0%

Test Distance:7.850m [K=1.0000]

Remarks:

Photometric Data Table [cd]

177.0	107.6	107.1	107.1	107.0	107.2	107.2	107.1	107.3	107.4	107.7
180.0	107.1	106.5	106.3	106.1	106.2	106.2	106.1	106.3	106.4	106.7
G/C	300.0	305.0	310.0	315.0	320.0	325.0	330.0	335.0	340.0	345.0
0.0	12009	12004	12015	12012	12023	12023	12038	12036	12047	12050
3.0	11827	11833	11859	11869	11893	11909	11935	11955	11980	12002
6.0	11604	11618	11660	11683	11734	11770	11817	11854	11904	11945
9.0	11335	11368	11432	11475	11546	11605	11677	11739	11811	11872
12.0	11029	11078	11167	11234	11334	11416	11516	11604	11702	11788
15.0	10698	10764	10877	10970	11099	11210	11339	11454	11586	11701
18.0	10337	10428	10567	10689	10846	10987	11157	11306	11468	11624
21.0	9991	10094	10260	10401	10593	10759	10965	11160	11366	11565
24.0	9643	9770	9950	10120	10331	10541	10782	11024	11283	11529
27.0	9325	9466	9662	9847	10083	10326	10614	10911	11221	11528
30.0	9022	9186	9392	9593	9848	10128	10460	10814	11189	11564
33.0	8713	8909	9135	9350	9628	9933	10319	10734	11186	11645
36.0	8360	8601	8876	9116	9419	9755	10185	10672	11212	11769
39.0	7912	8213	8563	8866	9213	9590	10074	10639	11272	11917
42.0	7374	7730	8178	8582	9015	9462	10001	10645	11352	12032
45.0	6805	7179	7720	8237	8805	9331	9932	10625	11366	12057
48.0	6213	6593	7170	7801	8504	9116	9768	10486	11257	12024
51.0	5668	5996	6581	7264	8090	8790	9532	10308	11172	12118
54.0	5165	5429	5965	6656	7601	8460	9369	10278	11271	12445
57.0	4706	4899	5365	6042	7088	8205	9367	10472	11644	13087
60.0	4264	4404	4796	5413	6555	8033	9583	11004	12448	14065
63.0	3819	3933	4253	4807	6035	8038	10132	11951	13596	14944
66.0	3389	3486	3750	4263	5630	8197	10796	12648	13805	14628
69.0	2963	3054	3307	3815	5288	8044	10956	12220	12828	13182
72.0	2509	2622	2884	3380	4740	7152	10060	11269	11343	10501
75.0	1911	2146	2431	2840	3880	5541	8014	9474	9226	7623
78.0	1364	1590	1862	2133	2781	3733	5317	6450	6617	5647
81.0	925.0	1068	1233	1324	1613	1971	2936	3474	4158	4320
84.0	548.2	604.1	656.6	669.2	803.8	996.1	1271	1621	2505	3422
87.0	249.5	264.4	295.4	281.0	373.9	396.3	510.6	621.9	1160	1868
90.0	39.17	40.19	52.20	85.92	72.91	101.5	98.21	161.4	302.7	291.5
93.0	26.15	33.54	38.05	42.13	44.02	47.83	50.38	50.54	49.36	49.53
96.0	31.38	35.73	39.84	43.33	44.93	49.07	51.26	53.00	53.94	55.77
99.0	34.69	39.15	43.01	47.21	49.04	53.45	55.47	58.15	59.88	62.70
102.0	39.76	44.18	47.95	52.13	55.17	58.52	60.86	64.13	66.47	70.00
105.0	45.53	49.87	53.43	57.43	60.32	63.69	66.47	70.26	73.15	77.19
108.0	51.59	55.76	58.97	62.56	65.15	68.65	71.71	75.98	79.46	83.95
111.0	57.68	61.64	64.45	67.55	69.88	73.39	76.80	81.40	85.14	89.83
114.0	63.65	67.34	69.80	72.72	75.01	78.57	82.08	86.74	90.41	95.10
117.0	69.30	72.65	75.03	78.05	80.57	84.33	87.61	91.98	95.38	99.69
120.0	74.62	77.65	80.04	83.32	86.06	89.77	92.81	96.82	99.72	103.5
123.0	79.55	82.65	84.97	88.30	91.00	94.46	97.28	100.7	103.1	106.1
126.0	84.08	87.27	89.72	92.87	95.31	98.36	100.7	103.4	105.3	107.6
129.0	88.23	91.18	93.85	96.83	98.93	101.4	103.2	105.2	106.5	108.1
132.0	91.98	94.58	97.06	99.91	101.7	103.5	104.9	106.3	107.1	108.3
135.0	95.42	97.69	99.72	102.1	103.8	105.2	106.1	107.2	107.7	108.6
138.0	98.58	100.4	102.1	103.9	105.2	106.3	107.1	108.0	108.3	108.9
141.0	101.3	102.5	103.8	105.4	106.2	107.2	107.9	108.6	108.9	109.2
144.0	103.3	104.2	105.1	106.4	107.2	108.1	108.6	109.0	109.0	109.3
147.0	104.6	105.5	106.1	107.1	107.9	108.8	109.2	109.5	109.3	109.4
150.0	105.4	106.4	107.2	108.0	108.7	109.5	109.8	110.1	109.7	109.9
153.0	106.2	107.0	108.0	109.0	109.6	110.5	110.9	111.0	110.5	110.6
156.0	107.0	107.8	108.6	109.6	110.6	111.6	112.1	112.3	111.7	111.8
159.0	107.8	108.5	109.2	110.1	111.0	112.0	112.9	113.4	113.0	113.1
162.0	108.6	109.2	109.7	110.5	111.3	112.2	113.1	113.8	113.7	113.9
165.0	109.0	109.5	110.0	110.7	111.4	112.3	113.2	114.1	114.3	114.5
168.0	109.2	109.7	110.2	110.8	111.5	112.3	113.2	114.2	114.6	115.1
171.0	109.1	109.6	110.1	110.7	111.3	112.2	113.1	114.1	114.6	115.6
174.0	108.6	109.0	109.4	109.9	110.5	111.5	112.4	113.4	114.1	115.5
177.0	107.9	108.3	108.7	109.2	109.6	110.4	111.2	112.2	112.7	114.1
180.0	106.8	107.3	107.6	108.3	108.7	109.5	110.3	111.1	111.5	112.7
G/C	350.0	355.0								
0.0	12060	12062								
3.0	12029	12047								
6.0	11991	12026								
9.0	11938	11995								
12.0	11880	11959								
15.0	11820	11929								
18.0	11777	11919								
21.0	11756	11934								

C Range: 0 - 360DEG
 C Interval: 5.0DEG
 Test Speed: HIGH
 Temperature:25.3DEG
 Operators:DAMIN
 Test Date:06 October 2023

γ Range: 0 - 180DEG
 γ Interval: 1.0DEG
 Test System: GO-2000B_V1 SYSTEM V2.00.446
 Humidity:65.0%
 Test Distance:7.850m [K=1.0000]
 Remarks:

Photometric Data Table [cd]

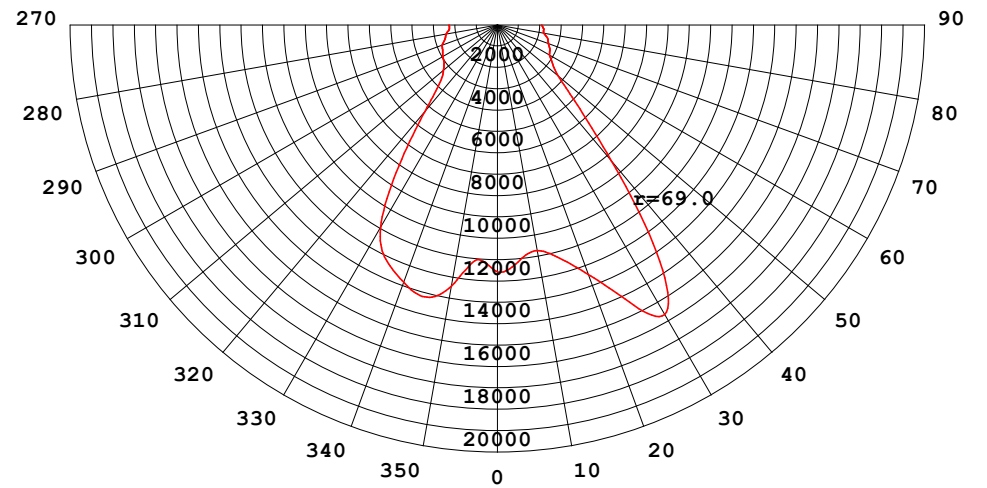
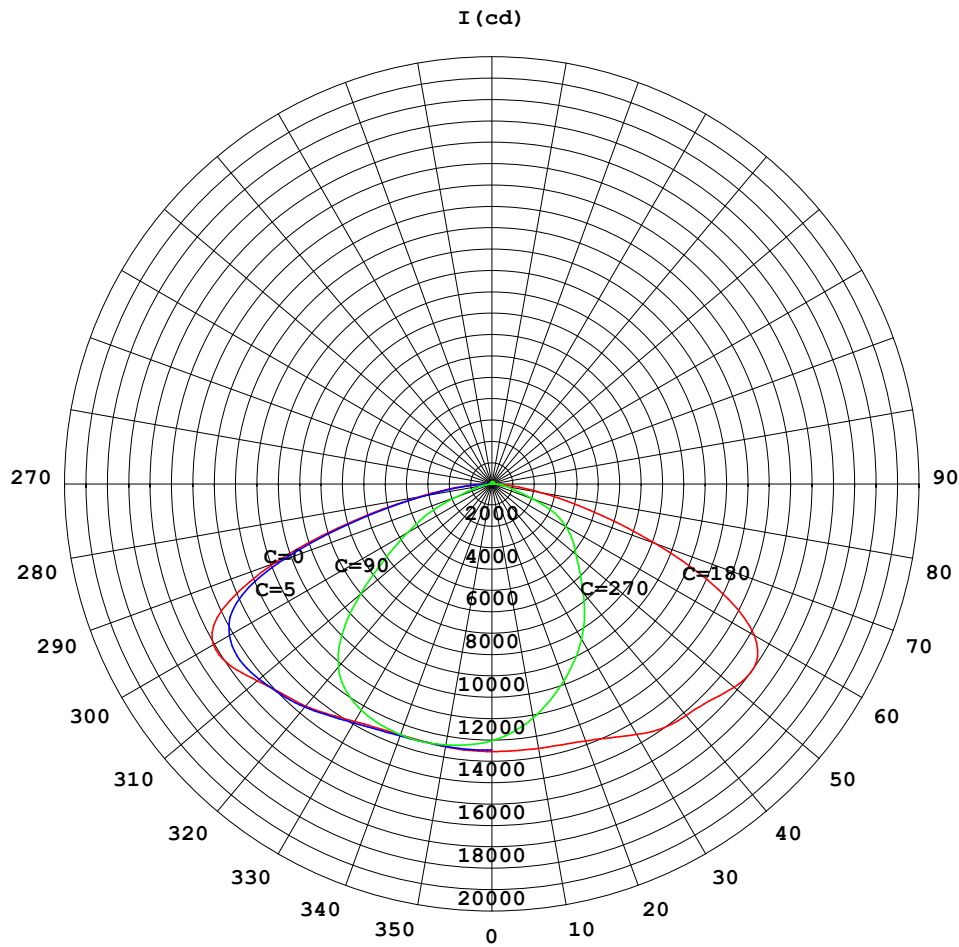
24.0	11767	11984
27.0	11812	12071
30.0	11906	12214
33.0	12056	12422
36.0	12249	12660
39.0	12452	12882
42.0	12592	13037
45.0	12657	13172
48.0	12758	13388
51.0	13024	13720
54.0	13501	14153
57.0	14185	14616
60.0	14918	14910
63.0	15287	14696
66.0	14576	13342
69.0	12411	11025
72.0	9290	8436
75.0	6791	6460
78.0	5321	4814
81.0	4213	3235
84.0	3355	2014
87.0	1945	998.7
90.0	688.8	175.9
93.0	49.38	49.94
96.0	56.69	57.75
99.0	64.48	66.21
102.0	72.34	74.42
105.0	79.95	82.09
108.0	87.08	89.56
111.0	93.22	95.89
114.0	98.45	100.9
117.0	102.9	105.0
120.0	106.3	108.2
123.0	108.6	110.2
126.0	109.7	110.9
129.0	109.7	110.7
132.0	109.4	110.0
135.0	109.2	109.2
138.0	109.0	108.6
141.0	109.0	108.3
144.0	109.0	108.1
147.0	109.2	108.1
150.0	109.8	108.9
153.0	110.7	109.8
156.0	111.9	111.2
159.0	113.1	112.7
162.0	114.1	114.0
165.0	114.8	115.0
168.0	115.6	116.0
171.0	116.3	116.9
174.0	116.8	117.6
177.0	116.1	117.5
180.0	114.8	117.0

C Range: 0 - 360DEG
 C Interval: 5.0DEG
 Test Speed: HIGH
 Temperature:25.3DEG
 Operators:DAMIN
 Test Date:06 October 2023

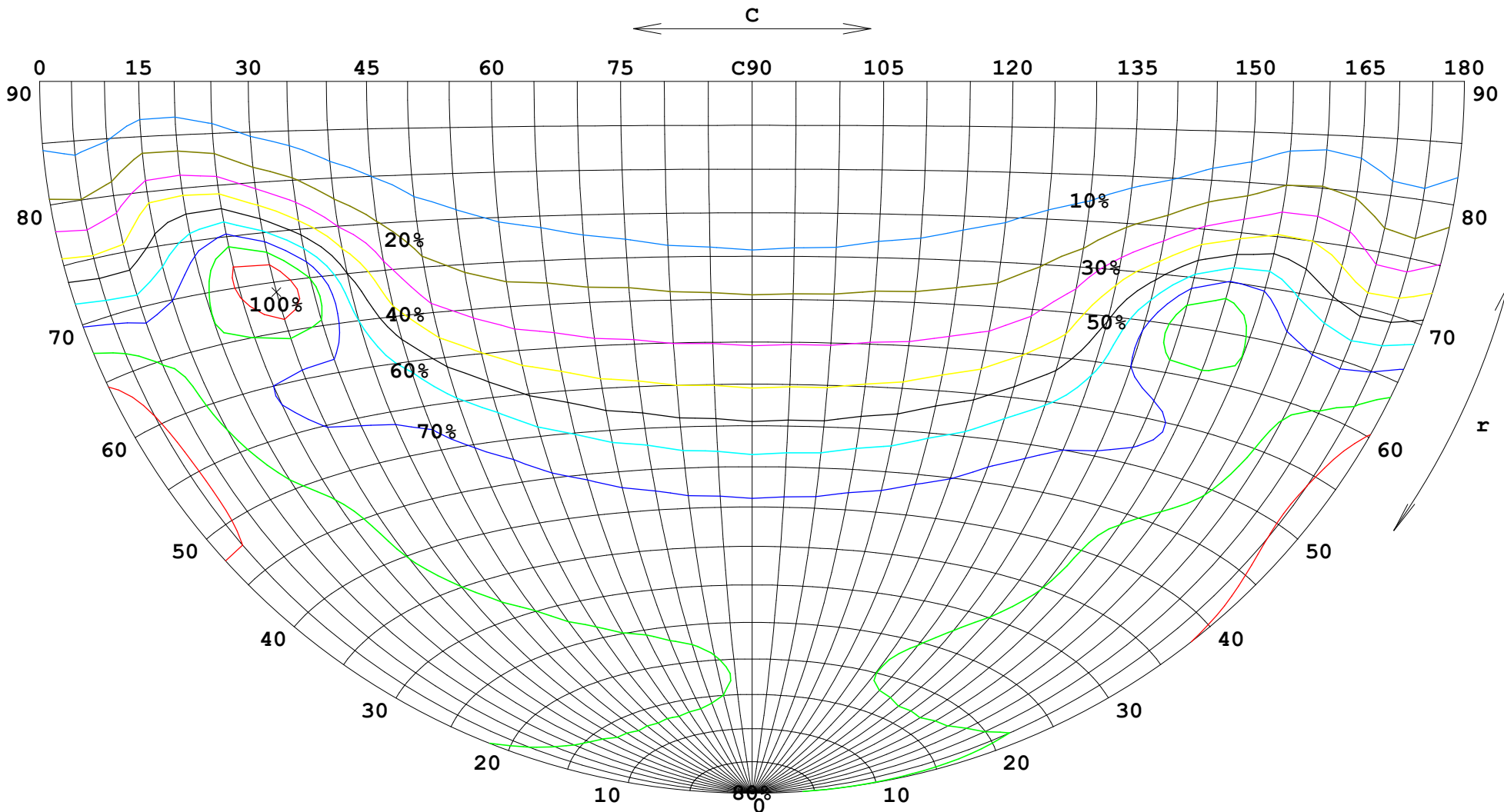
γ Range: 0 - 180DEG
 γ Interval: 1.0DEG
 Test System: GO-2000B_V1 SYSTEM V2.00.446
 Humidity:65.0%
 Test Distance:7.850m [K=1.0000]
 Remarks:

FLUX DATA:

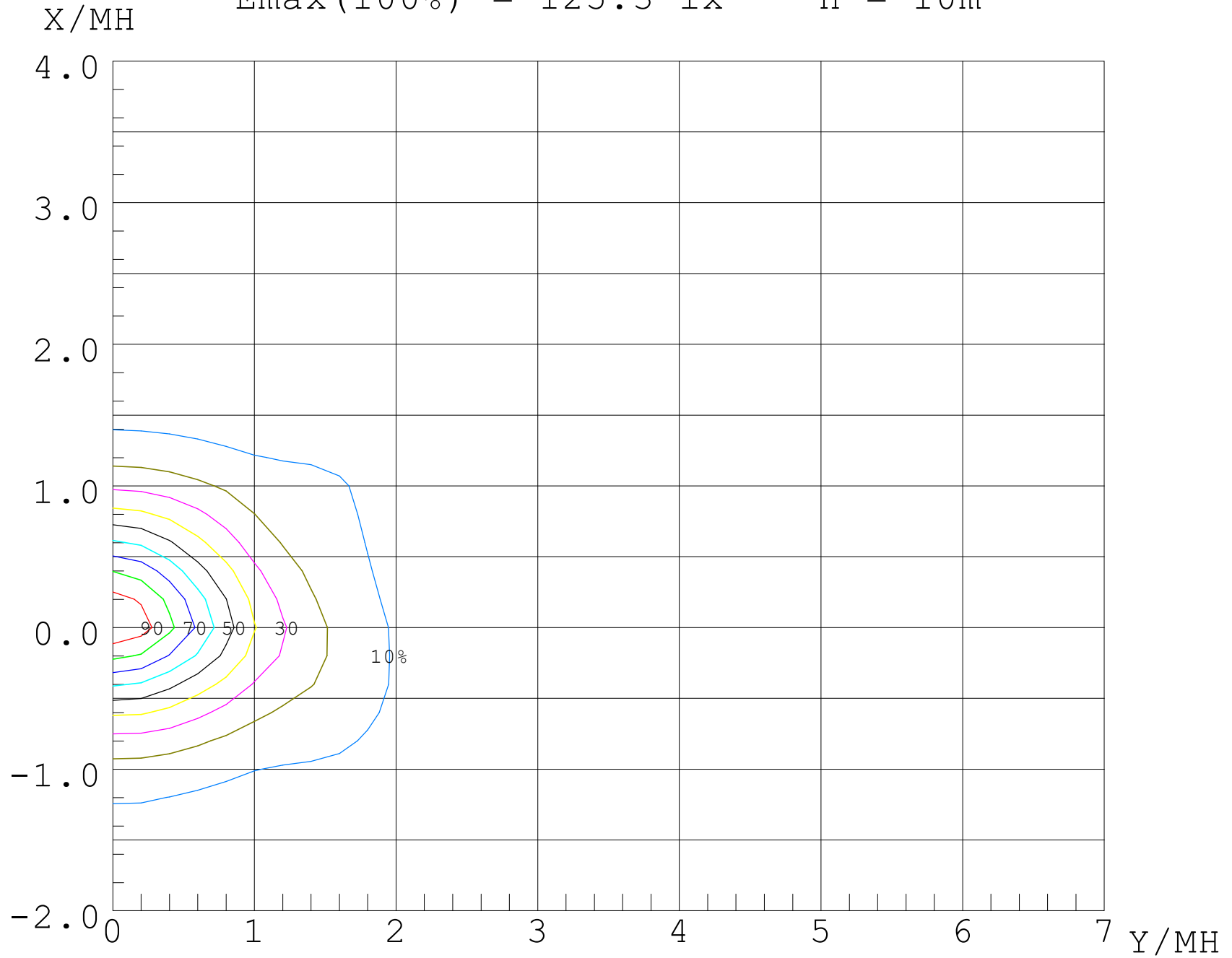
LOR: 100.0 %
 STREET DOWN: 24434 lm
 STREET UP: 196.4 lm
 HOUSE DOWN: 20839 lm
 HOUSE UP: 252.7 lm



$I_{\max}(100\%) = 15666 \text{ cd}$



$E_{\max}(100\%) = 125.3 \text{ lx}$ $H = 10\text{m}$



UF (%)

80

70

60

50

40

30

20

10

0

-2

-1

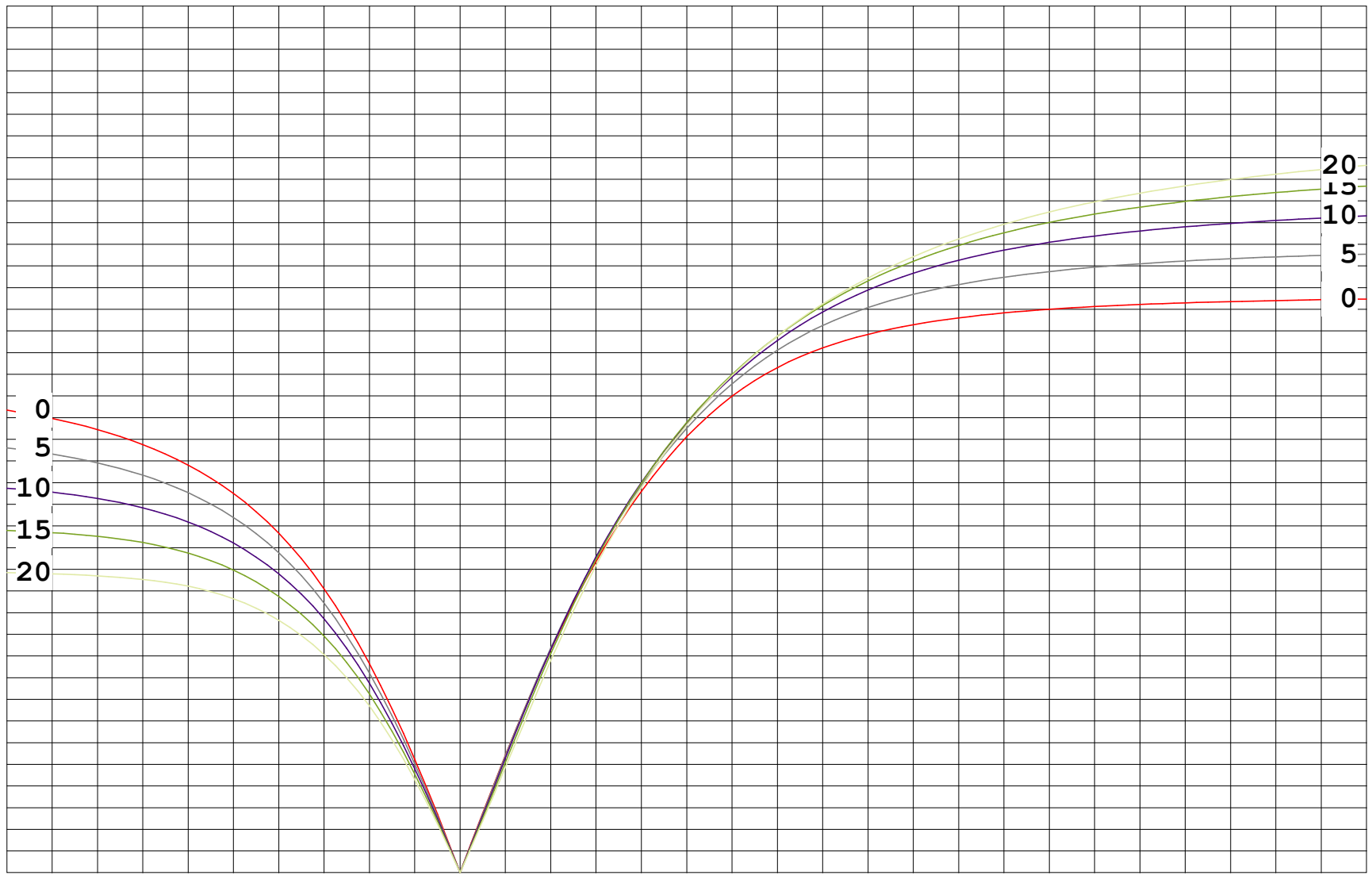
0

1

2

3

4 X/MH



0
5
10
15
20

20
15
10
5
0