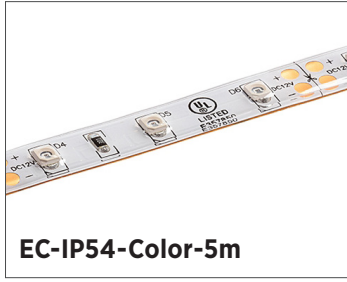


Eco LED Strip Lights

3528 Strip Specifications

Project _____

Date _____ Type _____



FEATURES

- 24 VDC input available
- Multiple density options
- LED lifetime of 50,000 hours (L70)
- 8 mm strip width
- 3M adhesive backing
- Operating temperature of -4°-113° F (-20°-45° C)
- IP64 environmental rating

APPLICATIONS

Some common applications include sign lighting, bias lighting, cove lighting, task lighting, backlighting, accent lighting, and under cabinet lighting.

ACCESSORIES

Power Supplies



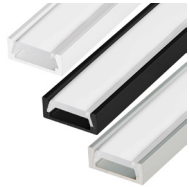
Strip Connectors



Controllers and Switches



Mounting Hardware and Housings



AVAILABLE VERSIONS

12 V

- STW-BAMB-B3C-08B5M-12V
- STW-BBLU-B3C-08B5M-12V
- STW-BGRE-B3C-08B5M-12V
- STW-BPIN-B3C-08B5M-12V
- STW-BRED-B3C-08B5M-12V
- STW-BULV-B3C-08B5M-12V
- STW-BYEL-B3C-08B5M-12V

24 V

- STW-BAMB-B6C-08B5M-24V
- STW-BBLU-B6C-08B5M-24V
- STW-BGRE-B6C-08B5M-24V
- STW-BPIN-B6C-08B5M-24V
- STW-BRED-B6C-08B5M-24V
- STW-BULV-B6C-08B5M-24V
- STW-BYEL-B6C-08B5M-24V

SAMPLE PART NUMBER BREAKDOWN

STW-BRED-B6C-08B5M-24V

FAMILY / CATEGORY / COLOR			LED TYPE / SEGMENT		IP RATING	SIZE / DENSITY / VOLTAGE			
STW	B	RED	B	6	C	08	B	5M	24V
Strip Type	Strip Type	Color	LED Type	LED/Segment	IP Rating	Strip Width	Density	Length	Voltage
STW: Weatherproof	B: Single Color	AMB: Amber BLU: Blue GRN: Green PIN: Pink RED: Red ULV: Ultraviolet YEL: Yellow	B: 3528	3: 3 LED/seg 6: 6 LED/seg	C: IP64	08: 8 mm	B: 60 LEDs/m	5M: 16.4 ft (5 m)	12V: 12 V 24V: 24 V

SPECIFICATIONS

Model	STW-x-B3C-08B5M-12V	STW-x-B6C-08B5M-24V
Power Consumption	23 W	
Current Draw	116 mA/ft	58 mA/ft
Brightness	115 lm/ft	
Efficacy	82 lm/W	
Beam Angle	120°	
Max Run	16.4 ft (5 m)	41 ft (12.5 m)



T 866.811.5550
 F 314.972.6202
 email: commercial-sales@superbrightleds.com
<https://www.superbrightleds.com/cat/led-strips-and-bars/>



Specifications are subject to change without notice.

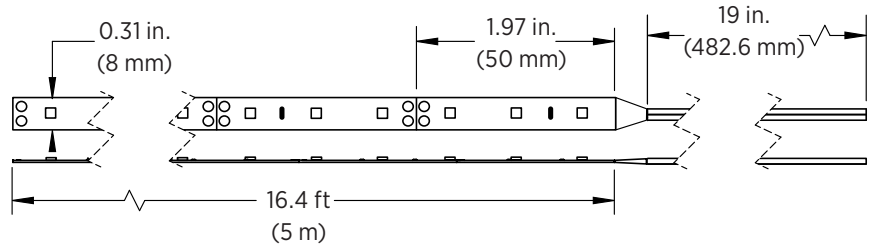
Eco LED Strip Lights

3528 Strip Specifications

DIMENSIONAL DRAWINGS

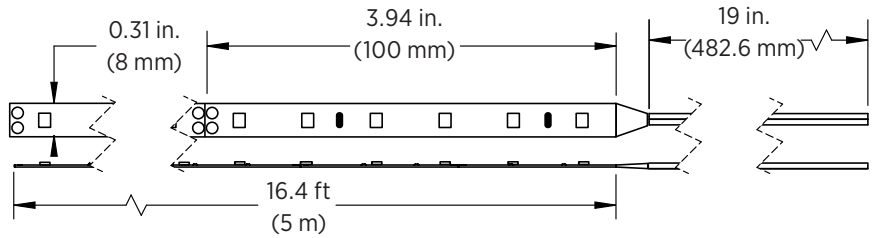
STW-x-B3C-08B5M-12V

- 16.4 ft (5 m) max run



STW-x-B6C-08B5M-24V

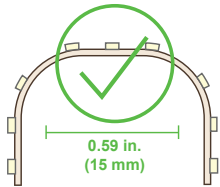
- 41 ft (12.5 m) max run



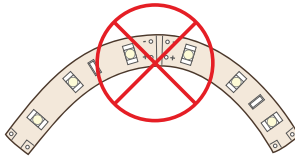
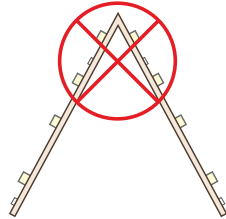
Note: The strip height for all strips shown is 0.08 in. (2 mm).

STRIP FLEXIBILITY

Bending strips at sharp angles will damage circuit traces and void warranty.



Bends less than 15mm will damage circuit traces and void warranty.



Bending strips on horizontal plane will damage circuit traces and void warranty.

NOTES



Specifications are subject to change without notice.

T 866.811.5550

F 314.972.6202

email: commercial-sales@superbrightleds.com

<https://www.superbrightleds.com/cat/led-strips-and-bars/>

