

# LED Area Light - Natural White

## High Powered Area Light Series

Project Name \_\_\_\_\_

Date \_\_\_\_\_

Type \_\_\_\_\_

The HPAL series LED area light fixture is designed to replace high-intensity discharge (HID) fixtures. This fixture is designed for commercial applications where reliability and performance are critical. A weatherproof aluminum alloy housing and polycarbonate lens are dust tight as well as water and impact resistant. Mounting options are available with a universal hanging bracket, slip fitter, or a surface mount.

### Specifications

HPAL-NW100-BP9	
Intensity	12500 lm
Replacement For	320 Watt HID
Rated Power Consumption	100 Watts
Operating Voltage Range	100-277 VAC
Beam Angle	90 / 90 degree
Color Temperature	5000 K
CRI	> 75
Operating Temperature	-30~+45 °C
Warranty	5 Years

HPAL-NW150-BP9	
Intensity	20000 lm
Replacement For	500 Watt HID
Rated Power Consumption	150 Watts
Operating Voltage Range	100-277 VAC
Beam Angle	90 / 90 degree
Color Temperature	5000 K
CRI	> 75
Operating Temperature	-30~+45 °C
Warranty	5 Years

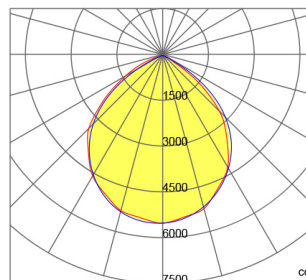
HPAL-NW100-BP9



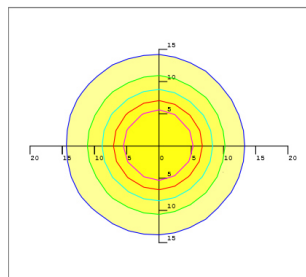
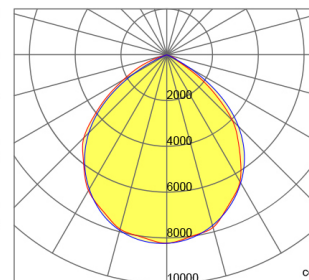
HPAL-NW150-BP9



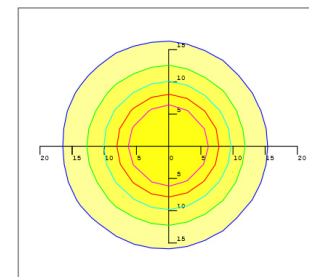
HPAL-NW100-BP9



HPAL-NW150-BP9



Mounting Height 12m, 0 Tilt, 50LUX-5LUX



Mounting Height 16m, 0 Tilt, 50LUX-5LUX

#### Illumination-90/90 Degree Beam Angle

Height	Beam Diameter	LUX
5m	φ 14m	132LUX
6m	φ 16m	99LUX
7m	φ 19m	76LUX
8m	φ 23m	58LUX
9m	φ 24m	46LUX

#### Illumination-90/90 Degree Beam Angle

Height	Beam Diameter	LUX
6m	φ 16m	133LUX
7m	φ 19m	101LUX
8m	φ 23m	78LUX
9m	φ 24m	62LUX
10m	φ 28m	50LUX

### Ordering Information

LED Product	Color Temperature / Wattage	Beam Pattern
HPAL - High Powered Area Light	NW100 - 5000K Natural White, 100 Watts	BP9 - Beam Pattern 90°
	NW150 - 5000K Natural White, 150 Watts	



Rev Date: V2 05/04/2021

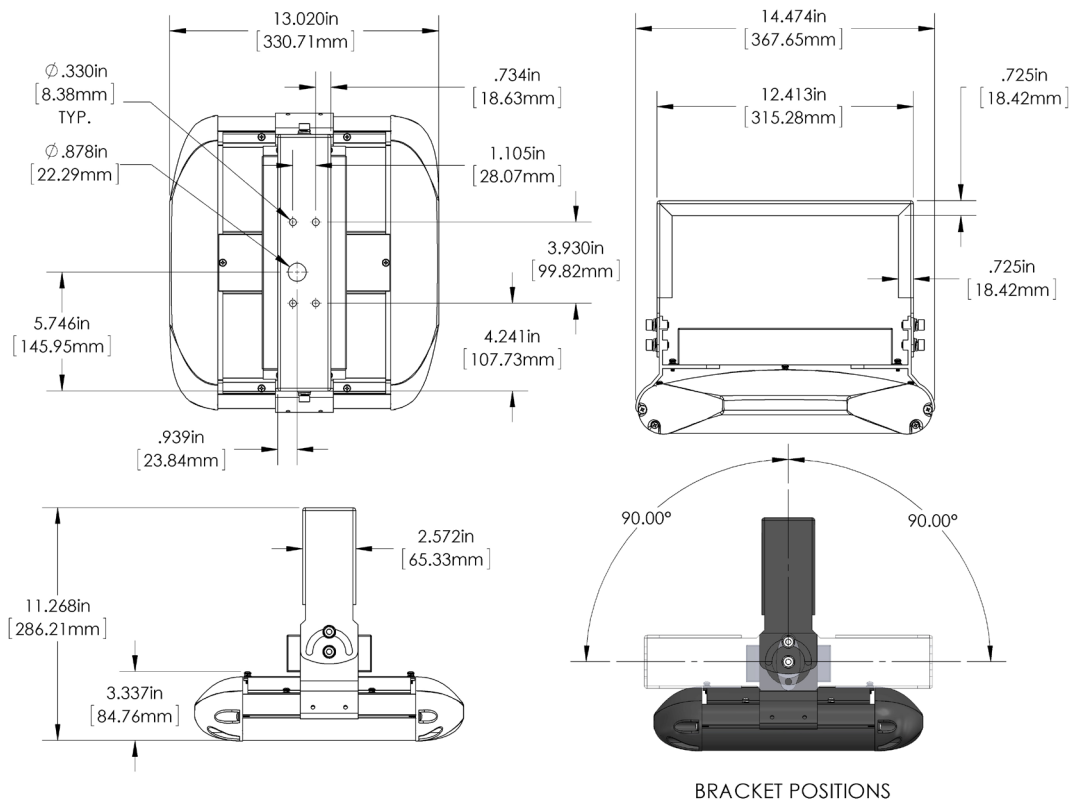
US: <https://www.superbrightleds.com/cat/led-high-bay-lighting/>

commercial-sales@superbrightleds.com

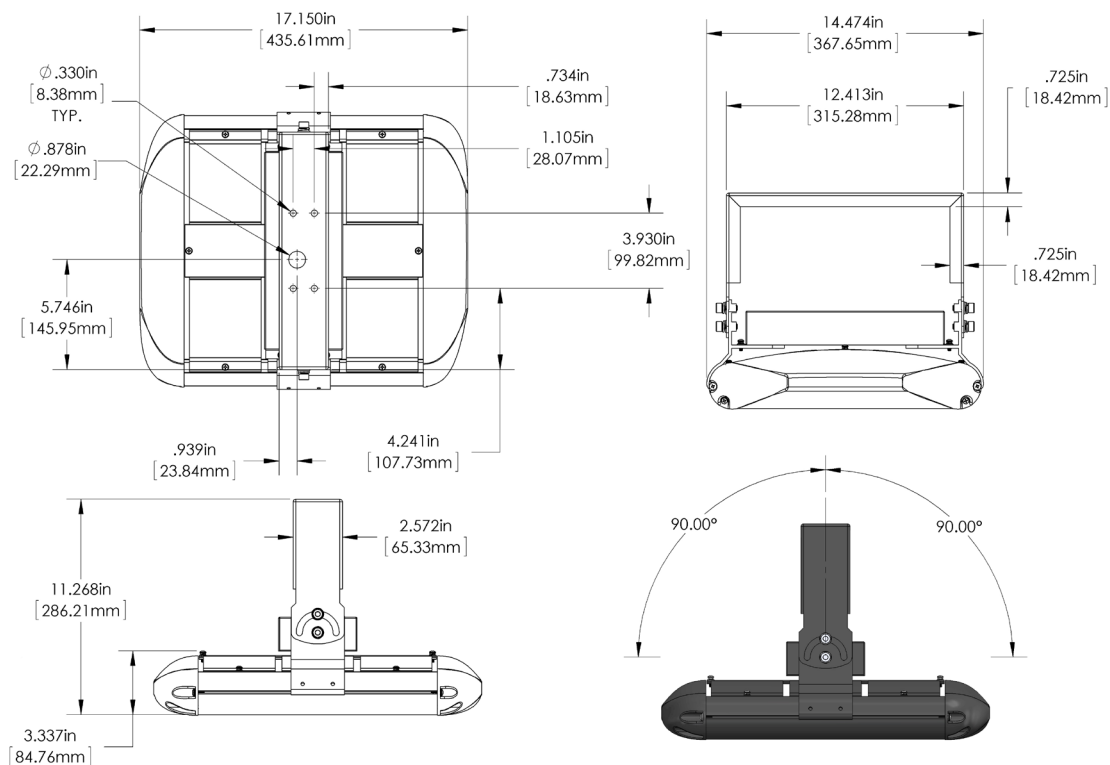
T 314.743.3067  
F 314.972.6202



HPAL-NW100-BP9



HPAL-NW150-BP9



Rev Date: V2 05/04/2021

US: <https://www.superbrightleds.com/cat/led-high-bay-lighting/>

[commercial-sales@superbrightleds.com](mailto:commercial-sales@superbrightleds.com)

T 314.743.3067  
F 314.972.6202

