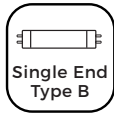




MX456FLT12034BKKDXW



Description

MX45 Series 4 ft. LED-ready strip light fixtures have non-shunted sockets to operate single-end Type B T8 tubes. Replace traditional 32-watt fluorescent tubes with 18-watt LED tubes lowering energy and maintenance costs. Surface mount using the included hardware or suspension mount using one of the optional mounting kits (sold separately). Available as fixture only or bundled with 18-watt LED tubes.

Mechanical/Construction

- Steel housing
- -4°—113 F (-20°—45° C)
- Suitable for dry locations
- 1/2" trade size knockouts¹
- Steel reflector or PMMA diffuser lens²

Electrical

- 120-277 VAC input
- Type B (ballast bypass)

Warranty

Five (5) Year Warranty

Available Models²

Fixture Only

- MX4521LT12024ZKKDXW (2-Tube Fixture Only)
- MX452ALT12024BKKDXW (2-Tube Fixture + Reflector)
- MX456FLT12034BKKDXW (3-Tube Fixture + Difuser Lens)

Fixture + Tubes

4000K

- MX4521LT12024ZKKDXW-40K18-AFN
- MX452ALT12024BKKDXW-40K18-AFN
- MX456FLT12034BKKDXW-40K18-AFN

5000K

- MX4521LT12024ZKKDXW-50K18-AFN
- MX452ALT12024BKKDXW-50K18-AFN
- MX456FLT12034BKKDXW-50K18-AFN

Application

Easily replaces traditional T5 and T8 fluorescent strip fixtures. Simple installation and the ability to wire end to end make these ideal fixtures for many applications, including garages, workshops, workbenches, warehouses, and other work or storage areas.

Certifications and Compliances

These fixtures are Certified by UL to UL 1598 (IFFX) standards. Bundled LED T8 tubes are UL Listed, UL Classified, and listed as DLC 5.1 Standard.



Product Page QR Code



¹ 1/2" trade size knockouts have an opening diameter of approximately 7/8"

² Select models only.

³ Contact customer service if interested in options other than those listed.



Optional Accessories

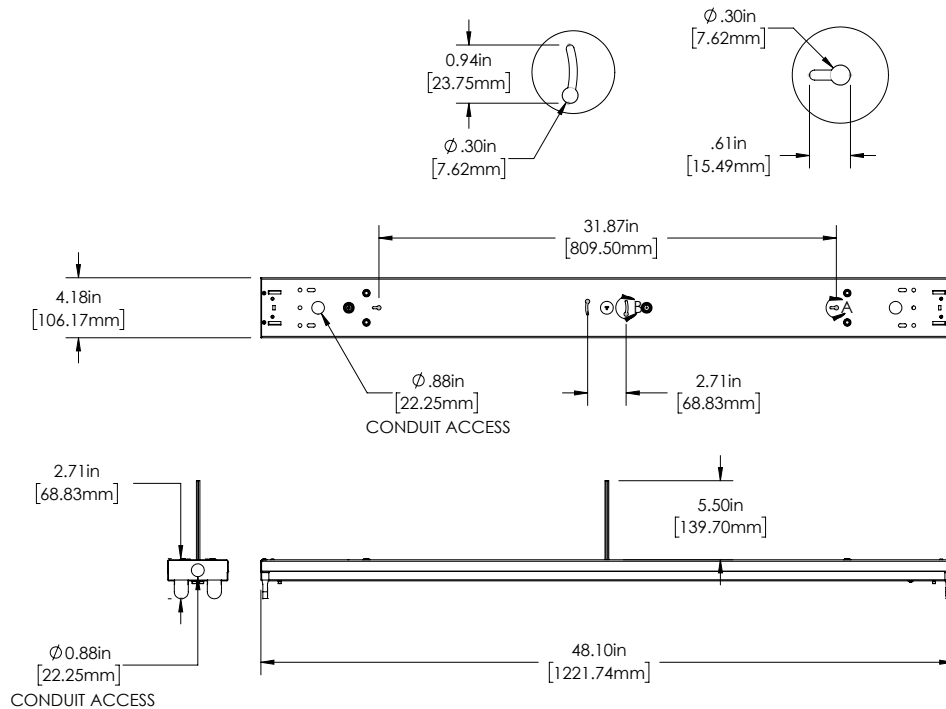
Hanging Suspension Kit (MX4-HK1)

Hanging Suspension Kit with Canopy(MX4-HK2)



Dimensional Drawings

MX4521LT12024ZKKDXW

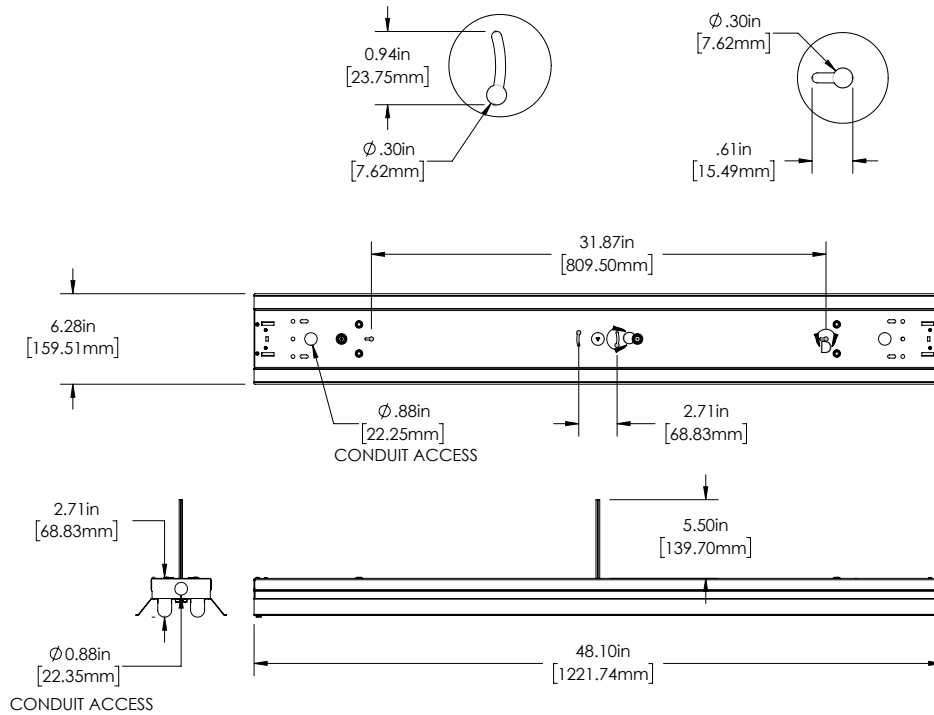


LSFD-M1 Series

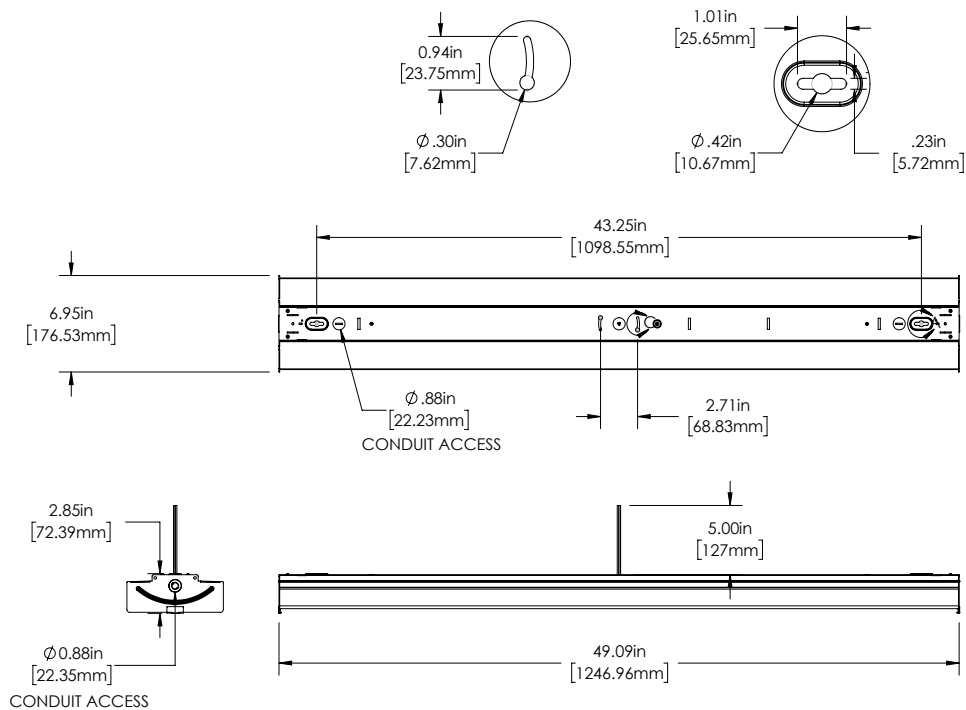
LED Linear Strip Fixture Specifications

Dimensional Drawings (cont.)

MX452ALT12024BKDXW



MX456FLT12034BKDXW



LSFD-M1 SeriesLED Linear Strip Fixture Specifications

Specifications

Model	MX4521LT12024ZKKDXW	MX452ALT12024BKKDXW	MX456FLT12034BKKDXW
Type	Fixture Only	Fixture with Reflector	Fixture with PMMA diffuser Lens
Max. Wattage	50 W (25 W x 2)		75 W (25 W x 3)
Tube Quantity	2		3
Tube Compatibility	4 ft T8 G13 bi-pin (single end)		
Ballast Compatibility	Type B (Ballast Bypass)		
IP Rating	IP20		
Operating Voltage	120-277 VAC		
Weight	3.7 lb (1.7 kg)	4.4 lb (2.0 kg)	6.3 lb (2.9 kg)

