

LVT Series

Low-Voltage Transformer Specifications

Project _____

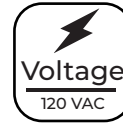
Date _____ Type _____



LVT-150W-SS4

Available Models¹

- LVT-75W-SS2T
- LVT-150W-SS4
- LVT-300W-SS4
- LVT-600W-SS8
- LVT-900W-SS8



Part Number Breakdown

Example: LVT-150W-SS4

Series	Output Power	Material	Output Terminals
LVT [Low-Voltage Transformer]	75W [75 W]	SS [Stainless Steel]	2T [2 Voltage Terminals]
	150W [150 W]		4 [4 Voltage Terminals]
	300W [300 W]		8 [8 Voltage Terminals]
	600W [600 W]		
	900W [900 W]		

Overview

The low-voltage landscape transformer is rated for up to 900 watts of power. Install longer landscape lighting runs with minimal voltage drop using the multiple screw-terminal voltage taps. The stainless steel landscape lighting transformer has a toroidal core for quiet, efficient operation and is equipped with 1/2" knockouts for wiring and photocell installation. The transformer has a 5-15P plug for 3-prong outlets. Use a compatible mechanical or digital timer for automatic functioning or the optional photocell for dusk-to-dawn operation. Mounting hardware is not included. Optional photocell easily plugs into the photocell port and runs through a knockout. Swivel the photocell up or down for precise placement. 75 W version has a built-in manual timer for simple powering control.

Features

- Built-in manual timer for simple powering control
- Multi-tap for longer landscape runs
- Optional photocell for dusk-to-dawn operation
- Stainless steel housing protects against outdoor conditions
- Fully encapsulated toroid core
- ETL Listed for indoor and outdoor applications

Product Details

- Stainless Steel Transformer Construction
- Overload and short circuit protection
- 120 VAC input, 12-22 VAC output*

Certifications and Compliances

- ETL Listed - UL 1838



Warranty

- 5-year warranty

Optional Accessories

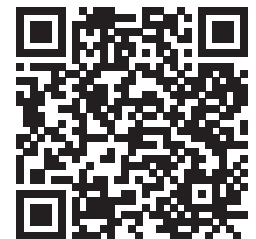
Dusk-to-dawn photocell sensor

- JL-104A

Timers for 150-900W transformers

- LVT-TD (digital timer)
- LVT-TM (mechanical timer)

* 75 W version has 12 and 15 VAC output options.
150-300 W versions have 12, 13, 14, and 15 VAC output options.
600-900 W versions have 12, 13, 14, 15, 16, 17, 18, and 22 VAC output options.



¹Contact customer service if interested in other options.

LVT Series

Low-Voltage Transformer Specifications

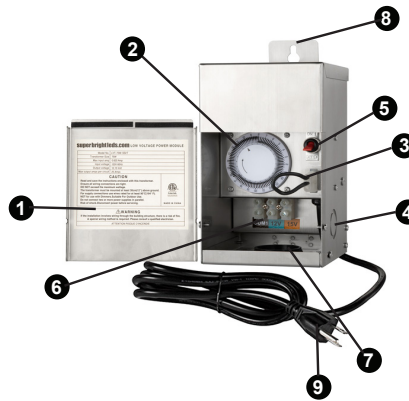
Specifications

Model	LVT-75W-SS2T	LVT-150W-SS4	LVT-300-SS4	LVT-600-SS8	LVT-900-SS8
Max. Output Wattage	75 W	150 W	300 W	600 W	900 W
Output Voltage	12 or 15 VAC	12, 13, 14, or 15 VAC		12, 13, 14, 15, 16, 17, 18, or 22 VAC	
Max. Input Amperage	625 mA	1.25 A	2.5 A	8 A	12 A
Max. Output Amperage	6.25 A	12.5 A	25 A	50 A	75 A
Input Voltage	120 VAC				
Input Connection	5-15P				
Dimming	None				
IP Rating	IP65				
Ambient Operating Temperature	-49°-113° F (-45°-45° C)				
Weight	8.75 lb (3.96 kg)	14.1 lb (6.39 kg)	16.5 lb (7.48 kg)	26.25 lb (11.90 kg)	38.2 lb (17.33 kg)

Features

75 W model

1. Operating Record, Warnings, and Specifications
2. Mechanical Timer
3. Photocell Jumper Wire
4. Photocell Knockout
5. On/Off Switch and Circuit Breaker Reset
6. Terminal Block
7. Conduit Cover
8. Mounting Tab
9. Power Cord



150-900 W models

1. Operating Record, Warnings, and Specifications
2. Timer Plug
3. Photocell Jumper Wire
4. Photocell Knockout
5. On/Off Switch and Circuit Breaker Reset³
6. Terminal Block
7. Conduit Cover
8. Mounting Tab
9. Power Cord



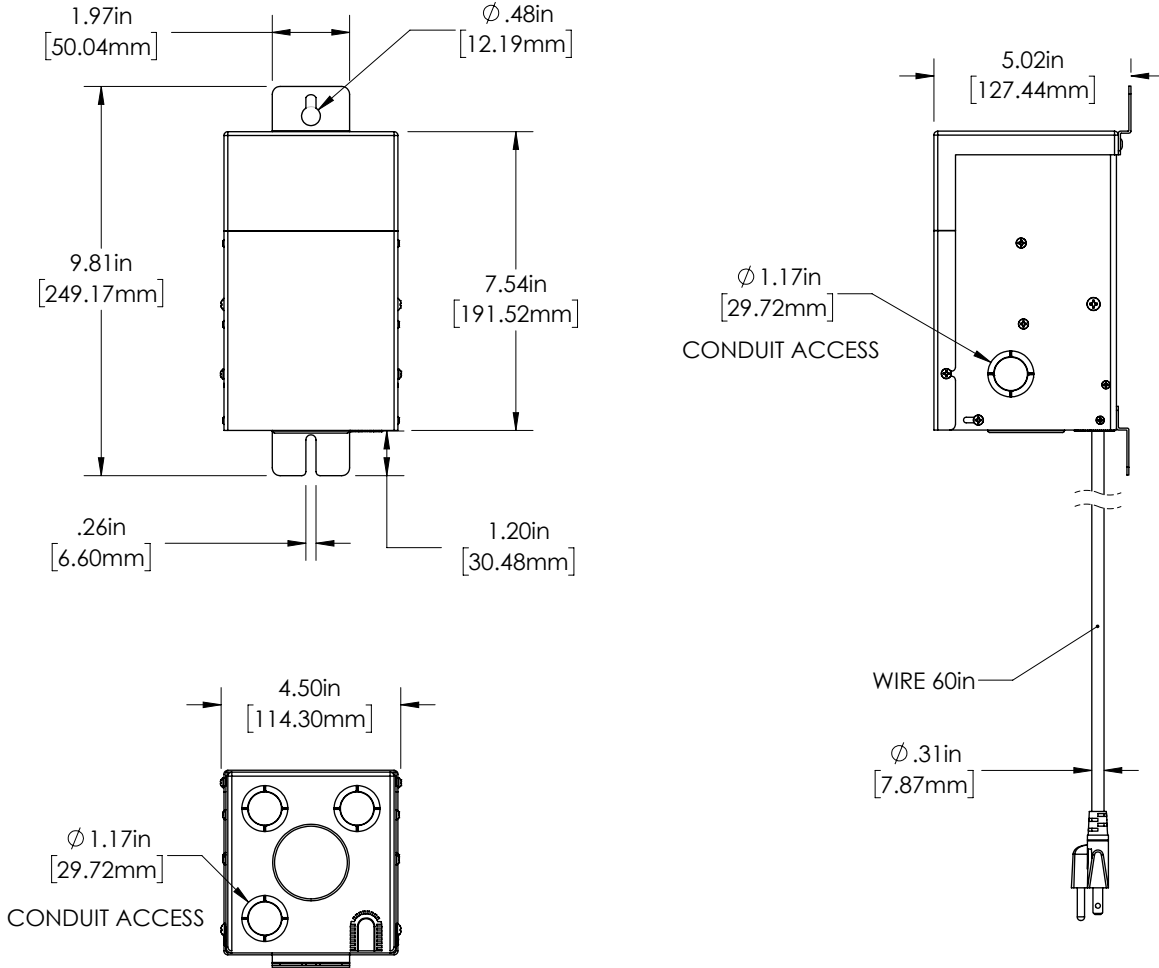
³ The 600 W model has two circuits and the 900 W model has three circuits.

LVT Series

Low-Voltage Transformer Specifications

Dimensional Drawings

LVT-75W-SS2T

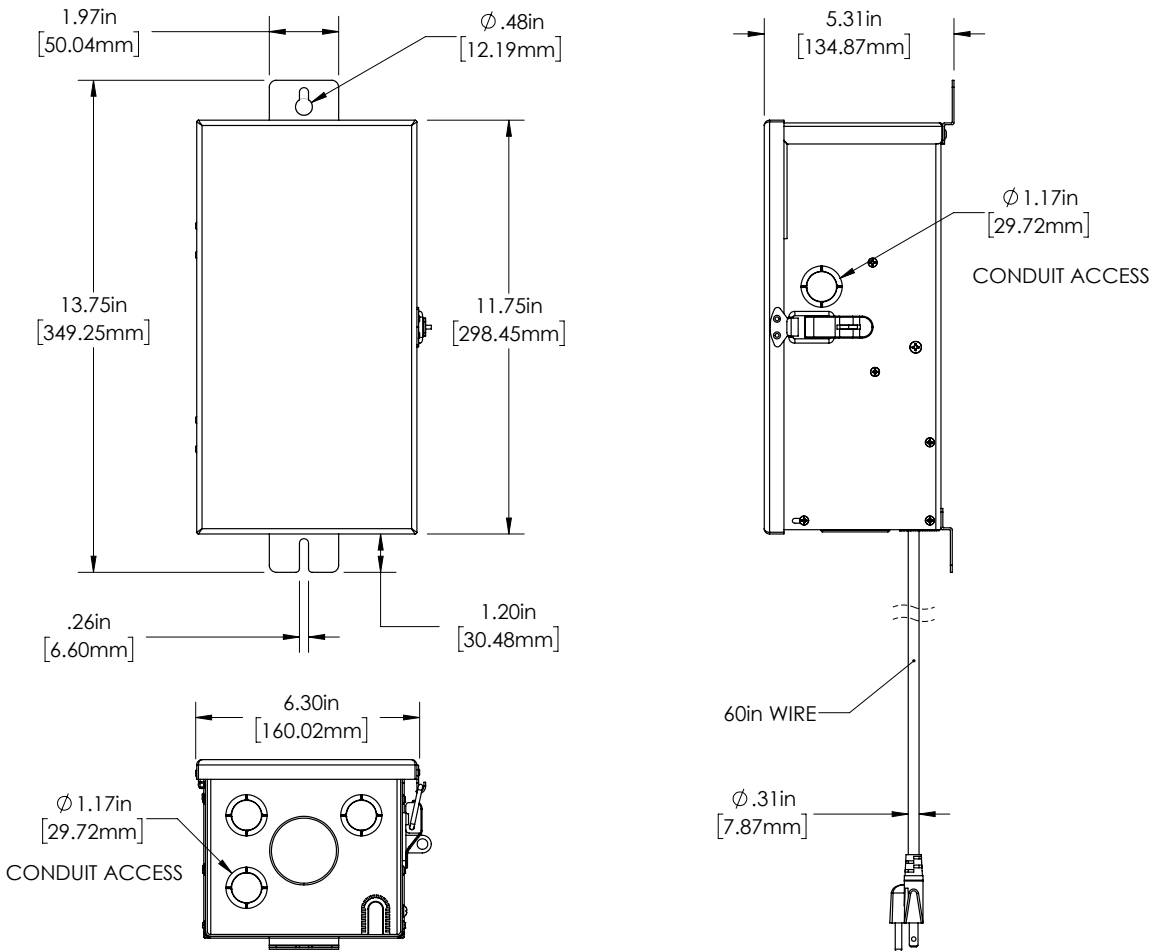


LVT Series

Low-Voltage Transformer Specifications

Dimensional Drawings (cont.)

LVT-150W-SS4, LVT-300-SS4

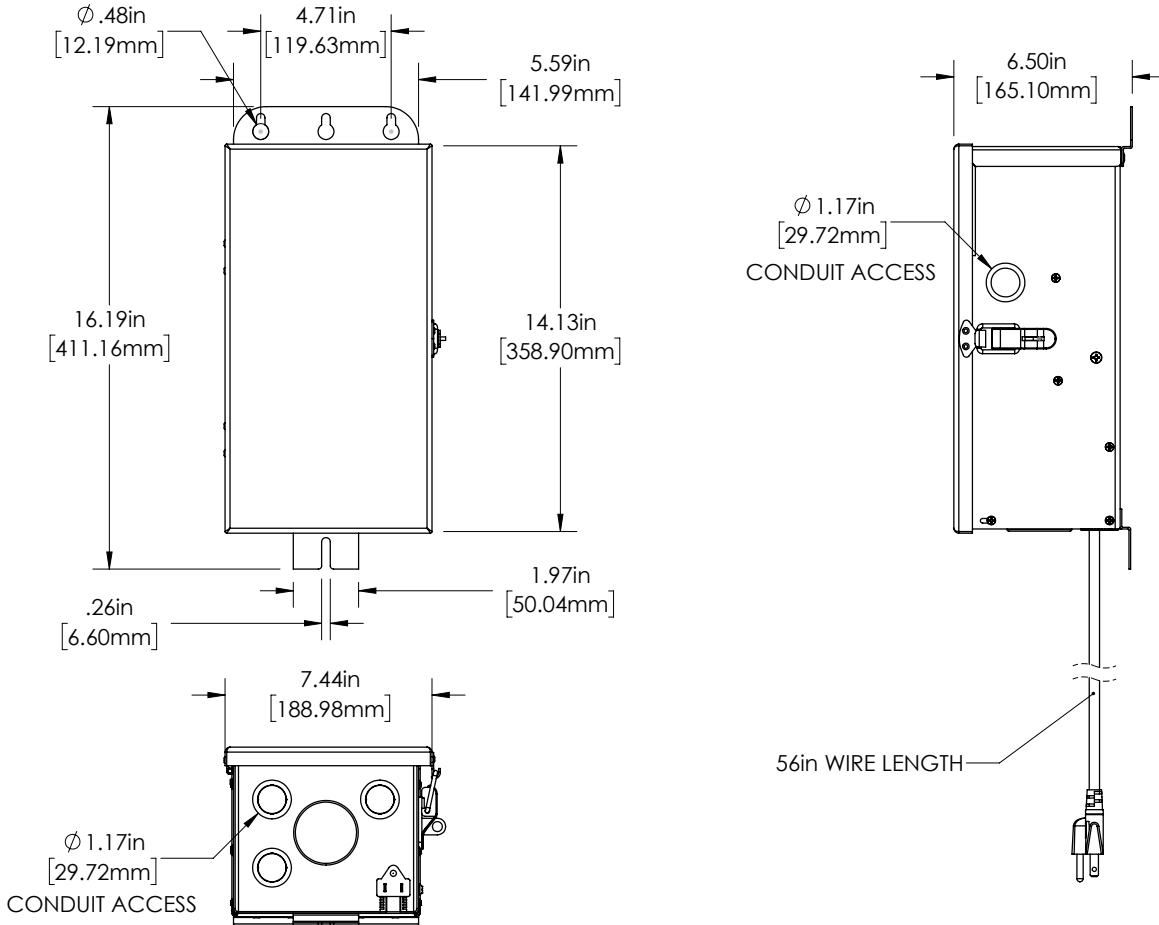


LVT Series

Low-Voltage Transformer Specifications

Dimensional Drawings (cont.)

LVT-600W-SS8



LVT Series

Low-Voltage Transformer Specifications

Dimensional Drawings (cont.)

LVT-900W-SS8

