

Important: Read all instructions prior to installation.

Magnetic Strip Light LED Retrofit Kit

Safety and Notes

- This product should be installed by a certified electrician in accordance with applicable national, state, and local building and electrical codes.
- To reduce the risk of electric shock, ensure that the main power source and circuit breakers are switched off before performing any installation or wiring procedures. Inspect wiring and components for damage before restoring power to the fixture.
- Avoid looking directly into the lamp when illuminated.
- Not intended for use with emergency lighting.
- For retrofit only, not intended for standalone use.

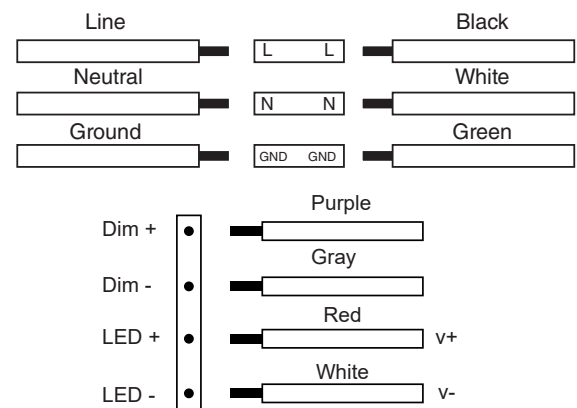
Specifications

Model	MRKD-xK14-30W	MRKD-xK22-40W	MRKD-xK24-50W
Power	30W	40W	50W
Input Voltage	100–277 VAC	100–277 VAC	100–277 VAC
Current	330 mA	440 mA	550 mA
LED Strip	2	3	3
Length	41.75" [1060mm]	20.88" [530.4mm]	41.75" [1060mm]
Dimming	0–10V	0–10V	0–10V

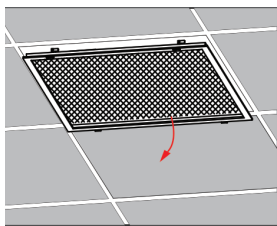


MRKD-xK22-40W

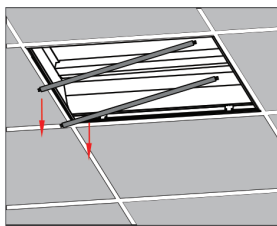
Wiring Diagram



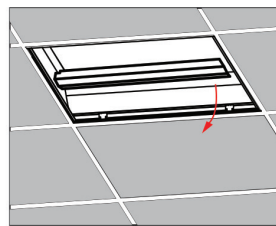
Installation Method



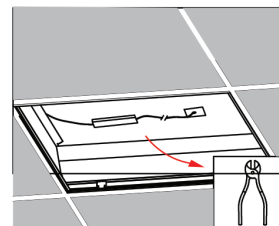
1 Remove Fixture Cover



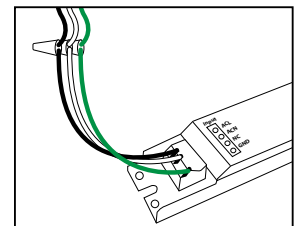
2 Remove Old Tubes



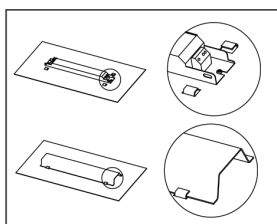
3 Remove reflector / ballast cover



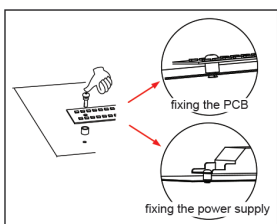
4 Remove ballast and wires going to the connectors



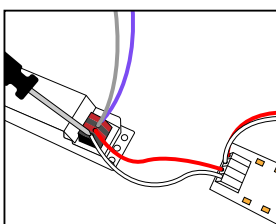
5 Connect power wires to driver



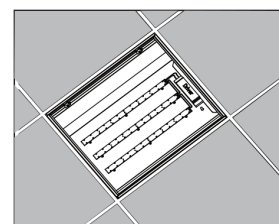
6 Ballast cover can be reinstalled over driver



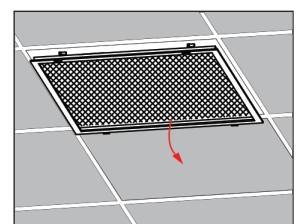
7 Light strips can be attached with magnets or screws



8 Connect light strips to output of driver



9 Installation complete



10 Optional: Reinstall fixture cover